

PASSAP E6000 FAIR ISLE (DBJ) TECHNIQUES

TWO COLOUR



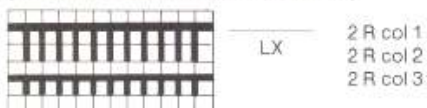
Fairisle, single-bed, in two colours



176

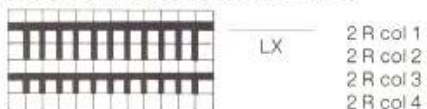
(Pattern Book p44)

Fairisle, single-bed, in three colours
(for superimposed stitch patterns)



177

Fairisle, single-bed, in four colours
(for superimposed stitch patterns)



178



Single-bed Fairisle, with single stitches



1 row of squares = 1 row of knitting

Note:

Only stitch pattern drawings with an even number of rows of squares may be used.

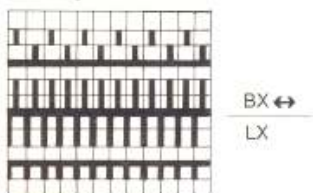
For this technique you always have to reverse the background and motif colours, i.e. ALTER: YES = ENT, COL. REV.: YES = ENT

179

(PB p47)



Birdseye double-bed Fairisle

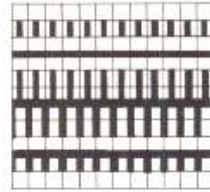


180

(PB p51)



Double-bed Fairisle with background colour only on reverse side

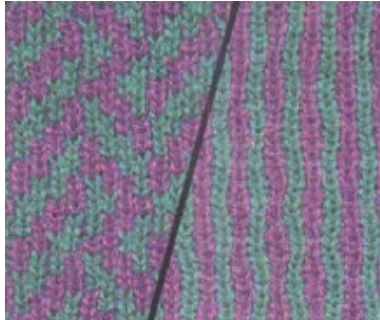


BX ←
LX

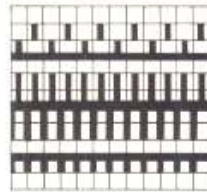
Cannot be knitted without a stitch pattern. To seal the edges of the knitting bring the first and last pushers on the back bed into Working Position.

181

(PB p107)



Double-bed Fairisle with vertical stripes on reverse side



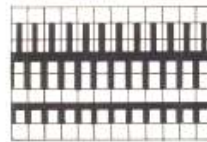
BX ←
LX

182

(PB p44)



Double-bed Fairisle



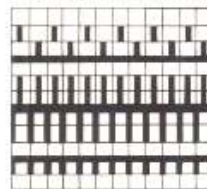
N
LX

183

(PB p48)



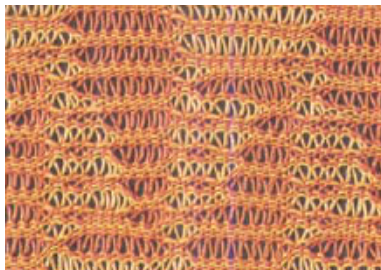
Double-bed birdseye Fairisle with long stitch



BX ↔
LX

184

(PB p48)



Summer Fair Isle

(PB p41)

Double-bed Fairisle with long stitch

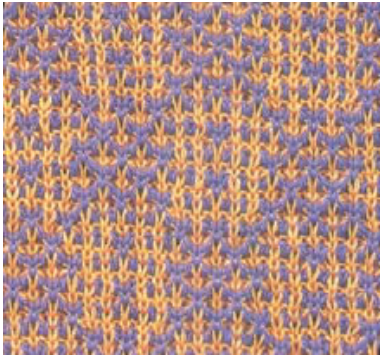


N
LX

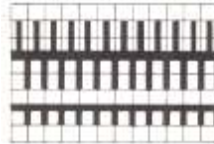
185

(PB p60)





Double-bed Fantasy Fairisle with tuck stitch

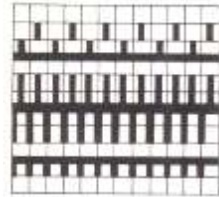


186

(PB p51)

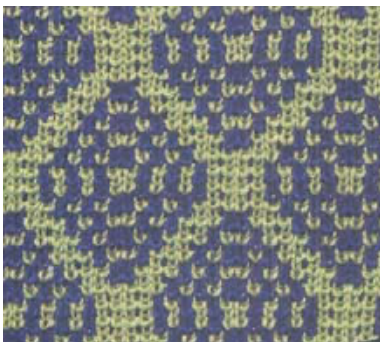


Double-bed Fairisle with tuck stitch on every row on the reverse side

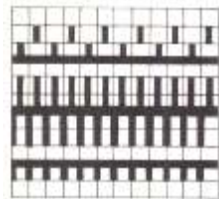


187

(PB p52)

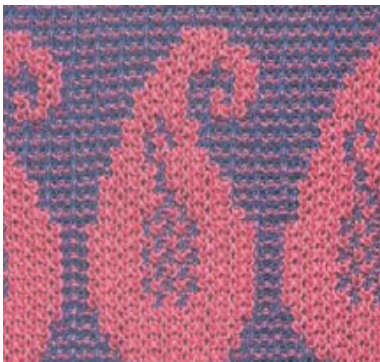


Double-bed Fairisle with half Fisherman's Rib on the reverse side

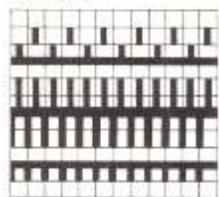


188

(PB p63)



Double-bed Fairisle with contrasting stitch formations for background and motif colours



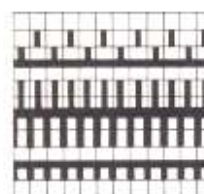
Semi-automatic

189

(PB p104)



Double-bed Fairisle with contrasting stitch formations for background and motif colours



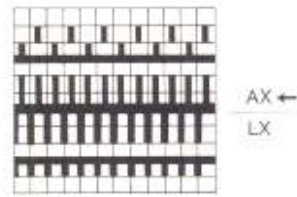
Semi-automatic

190

(PB p49)



Double-bed Fairisle with two tucks on the reverse side

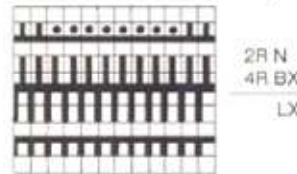


191

(PB p107)



Double-bed Fairisle with pintucks



2 R background colour
4 R motif colour

Semi-automatic

On back bed, bring pushers into Working Position for the two edge needles.

Cannot be combined with a stitch pattern.

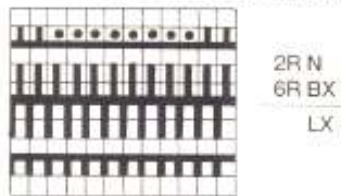
Note: For this pattern change of colour will not be displayed. When the display for the back lock setting changes you must change the colour too.

192

(PB p64)



Double-bed Fairisle with pintucks



2 R background colour
6 R motif colour

Semi-automatic

On back bed, bring pushers to Working Position for the two edge needles.

Cannot be combined with a stitch pattern.

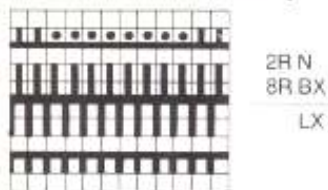
Note: For this pattern change of colour will not be displayed. When the display for the back lock setting changes you must change the colour too.

193

(PB p64)



Double-bed Fairisle with pintucks



2 R background colour
8 R motif colour

Semi-automatic

On back bed, bring pushers to Working Position for the two edge needles.

Cannot be knitted without stitch pattern.

Note: For this pattern change of colour will not be displayed. When the display for the back lock setting changes you must change the colour too.

194

(PB p64)

THREE COLOUR

The techniques 195–206 are used for 3-colour Fairisle if this Fairisle is the result of superimposing two stitch patterns.

(These may be stitch patterns from the Electronic memory or your own stitch pattern drawings entered via the reader.)

See page 131.

The rule for techniques 195–206 is: 1 row of squares = 2 rows background colour
2 rows motif colour
2 rows second motif colour

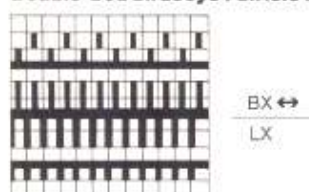
The techniques 219–230 (that appear in brackets), are used for 3-colour Fairisle where all 3 colours are marked over 3 rows of squares on the pattern sheet.

See page 132.

The rule for techniques 219–230 is: 1st row of squares = 2 rows background colour
2nd row of squares = 2 rows first motif colour
3rd row of squares = 2 rows second motif colour



Double-bed birdseye Fairisle in 3 colours

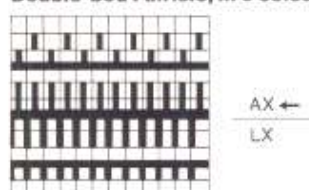


195
[219]

(PB p96)



Double-bed Fairisle, in 3 colours, with tucks on the reverse side

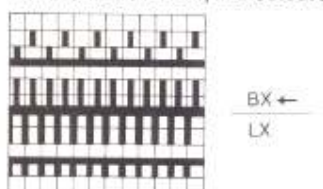


196
[220]

(PB p90)



Double-bed Fairisle, in 3 colours, with spotted effect

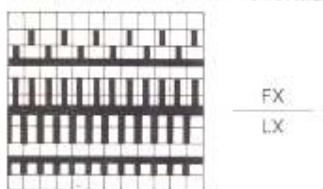


197
[221]

(PB p89)



Double-bed Fairisle in Fisherman's Rib and 3 colours

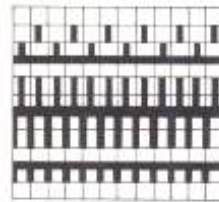


198
[222]

(PB p86)



Double-bed Fairisle, in 3 colours, with tucks on every row on the reverse side



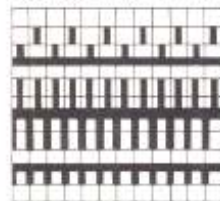
AX ↔
LX

199
[223]

(PB p76)



Double-bed Fairisle in 3 colours with contrasting stitch formations on back bed



2R AX ↔
2R N ↔
LX

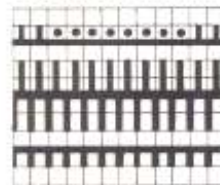
Note: For this pattern change of colour will not be displayed. When the display for the back lock setting changes you must change the colour too.

200
[224]

(PB p88)



Double-bed Fairisle in 3 colours, with pintuck effect



4R N
4R BX
LX

2 R background colour
2 R first motif colour
2 R second motif colour

Semi-automatic
On the back bed, bring pushers into Working Position for the two edge needles. Cannot be knitted without a stitch pattern.

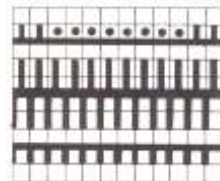
Note: For this pattern change of colour will not be displayed. When the display for the back lock setting changes you must change the colour too.

204
[228]

(PB p89)



Double-bed Fairisle in 3 colours, with pintuck effect



4R N
6R BX
LX

2 R background colour
2 R first motif colour
6 R second motif colour

Semi-automatic
On back bed, bring pushers into Working Position for the two edge needles. Cannot be knitted without a stitch pattern.

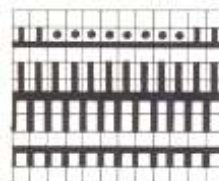
Note: For this pattern change of colour will not be displayed. When the display for the back lock setting changes you must change the colour too.

205
[229]

(PB p88)



Double-bed Fairisle in 3 colours, with pintuck effect



4R N
8R BX
LX

2 R background colour
2 R first motif colour
8 R second motif colour

Semi-automatic
On back bed, bring pushers into Working Position for the two edge needles. Cannot be knitted without a stitch pattern.

Note: For this pattern change of colour will not be displayed. When the display for the back lock setting changes you must change the colour too.

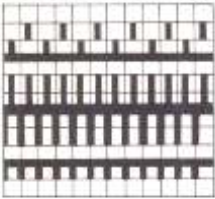
206
[230]

(PB p89)

FOUR COLOUR



Double-bed birdseye Fairisle in 4 colours



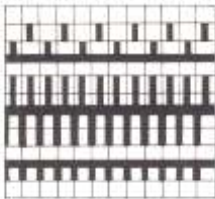
BX ↔
LX

207
[231]

(PB p87)



Double-bed Fairisle in 4 colours, with tucks on the reverse side



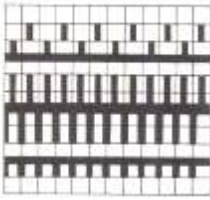
AX ←
LX

208
[232]

(PB p88)



Double-bed Fairisle in 4 colours, with spotted effect on the reverse side



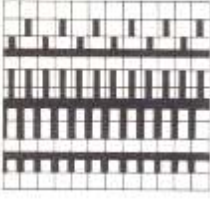
BX ↔
LX

209
[233]

(PB p96)



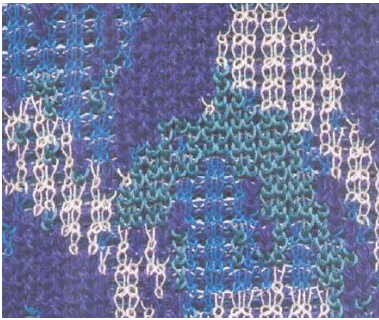
Double-bed Fairisle in Fisherman's Rib and 4 colours



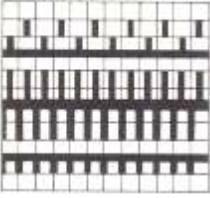
FX
LX

210
[234]

(PB p84)



Double-bed Fairisle in 4 colours, with tucks on every row on the reverse side

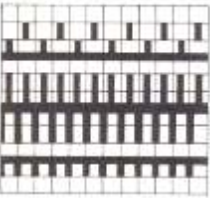


AX ↔
LX

211
[235]

(PB p99)

Double-bed Fairisle in 4 colours with contrasting stitch formations on the back bed



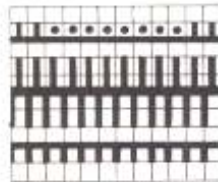
2R N ↔
2R AX ↔
LX

Semi-automatic
Note: For this pattern change of colour will not be displayed. When the display for the back lock setting changes you must change the colour too.

212
[236]



Double-bed Fairisle in 4 colours, with pintuck effect



6R N
4R BX
LX

2 R background colour
2 R first motif colour
2 R second motif colour
4 R third motif colour

Semi-automatic

On the back bed, bring pushers into Working Position for the two edge needles. Cannot be knitted without a stitch pattern.

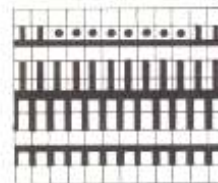
Note: For this pattern the third motif colour change which produces the pintuck effect is not indicated, so change it when the display for the back lock changes.

216
[240]

(PB p109)



Double-bed Fairisle in 4 colours, with pintuck effect



6R N
6R BX
LX

2 R background colour
2 R first motif colour
2 R second motif colour
6 R third motif colour

Semi-automatic

On the back bed, bring pushers into Working Position for the two edge needles. Cannot be knitted without a stitch pattern.

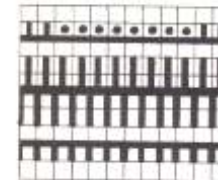
Note: For this pattern the third motif colour change which produces the pintuck effect is not indicated, so change it when the display for the back lock changes.

217
[241]

(PB p108)



Double-bed Fairisle in 4 colours, with pintuck effect



6R N
8R BX
LX

2 R background colour
2 R first motif colour
2 R second motif colour
8 R third motif colour

Semi-automatic

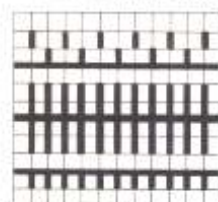
On the back bed, bring pushers into Working Position for the two edge needles. Cannot be knitted without a stitch pattern.

Note: For this pattern the third motif colour change which produces the pintuck effect is not indicated, so change it when the display for the back lock changes.

218
[242]

(PB p97)

Tubular Fairisle in 2 colours



HX ←
LX

Arrange pushers yourself on back bed, as desired.

Cannot be knitted without a stitch pattern.

243