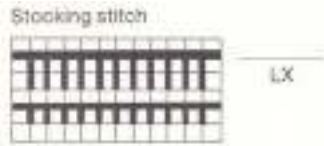


PASSAP E6000

BASIC KNITTING TECHNIQUES

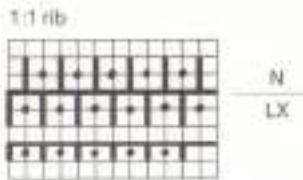
100



(Pattern Book p 2)



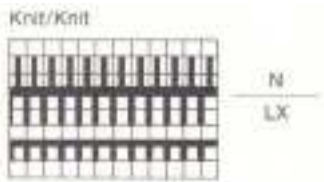
101



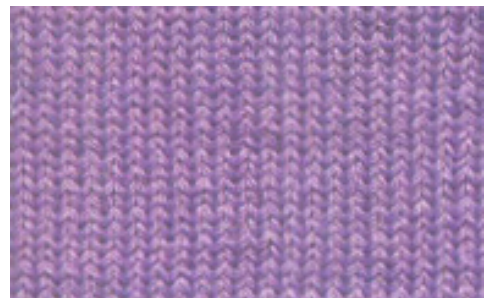
(PB p 2)



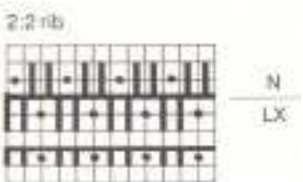
102



(PB p 2)



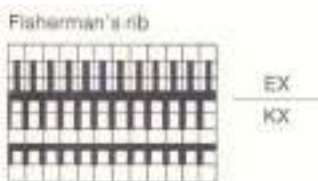
103



(PB p 2)



104

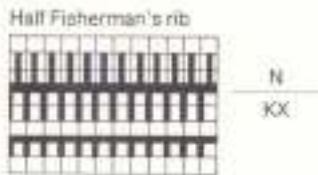


(PB p 2)



105

(PB p 2)

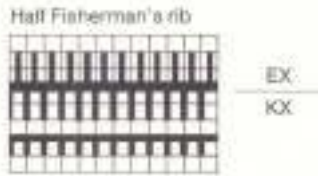


The purl stitch appears on the back bed.

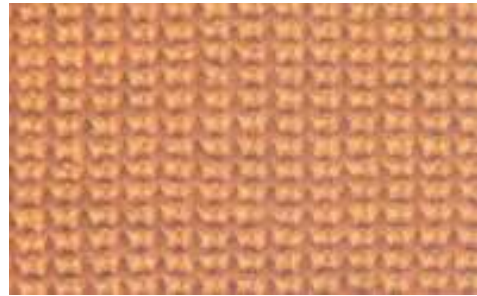


106

(PB p 2)

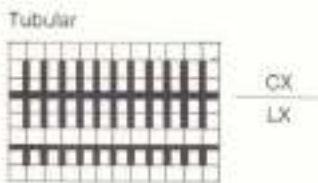


The purl stitch appears on the front bed.



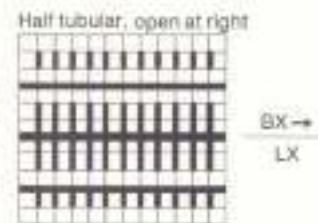
107

(PB p 3)



108

(PB p 3)



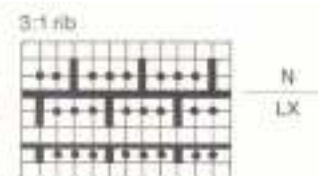
109

(PB p 3)



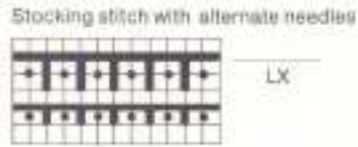
110

(PB p 3)



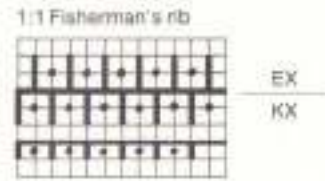
111

(PB p 3)



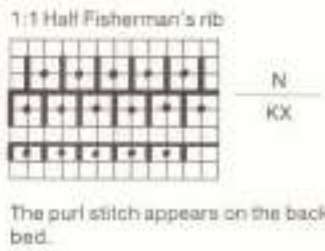
112

(PB p 3)



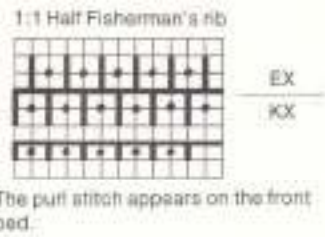
113

(PB p 3)



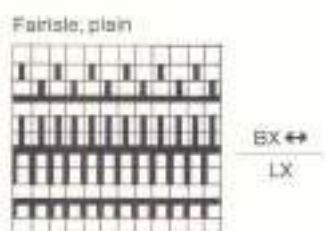
114

(PB p 4)



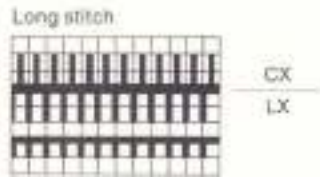
115

(PB p 4)

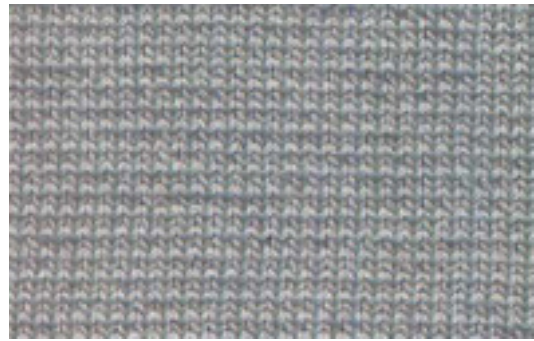


116

(PB p 4)

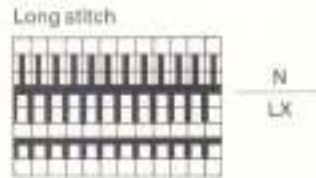


The long stitch appears on the back bed.



117

(PB p 4)

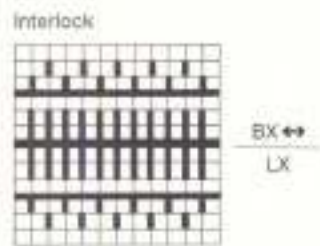


The long stitch appears on the front bed.



118

(PB p 4)

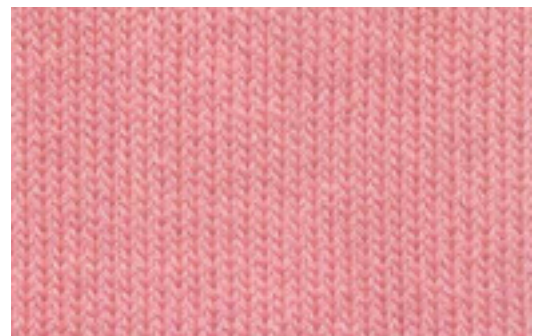
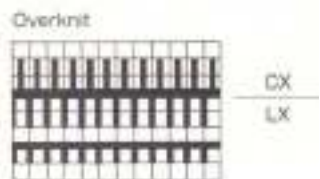


Both sides of the knitting look the same.



119

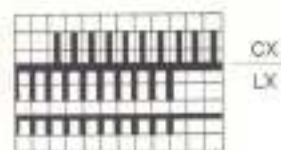
(PB p 4)



121 U100E

(PB p 4)

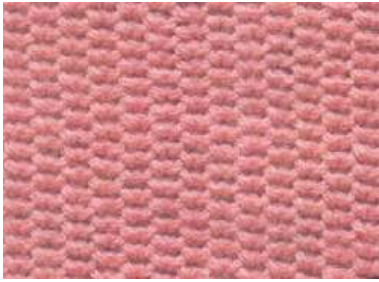
Garter stitch with U 100E (optional extra)



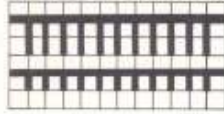
Note: On right edge bring an additional three needles to Working Position on back bed. On left edge bring an additional three needles and pushers to Working Position on front bed.



KNITTING TECHNIQUES FOR TUCK STITCHES



Single-bed tuck stitch pattern



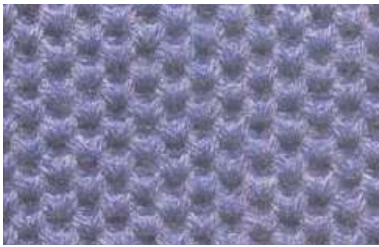
KX

Note:

1 row of squares = 1 row of knitting
1 white square = 1 stitch
1 black square = 1 tuck

129

(PB p 6)



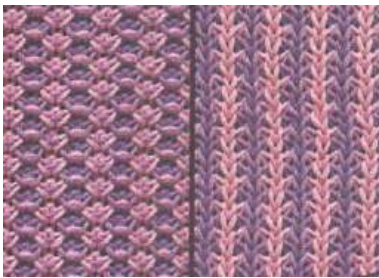
Single-bed tuck stitch pattern



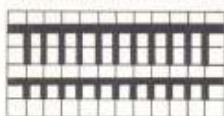
KX

130

(PB p 6)



Single-bed tuck stitch pattern



KX

2 R col 1
2 R col 2

131

(PB p 18)



Single-bed tuck stitch pattern in 2 colours



KX

2 R col 1
4 R col 2

132

(PB p 17)



Single-bed tuck stitch pattern in 2 colours

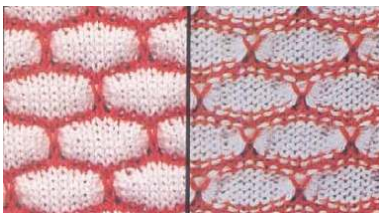


KX

4 R col 1
4 R col 2

133

(PB p 17)



Single-bed tuck stitch pattern in 2 colours

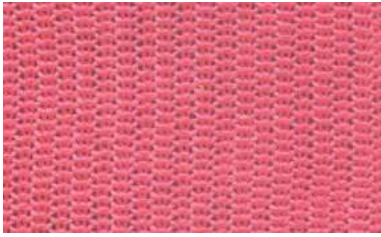


KX

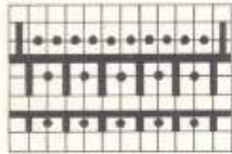
2 R col 1
6 R col 2

134

(PB p 17)



Single-bed tuck stitch pattern with alternate needles



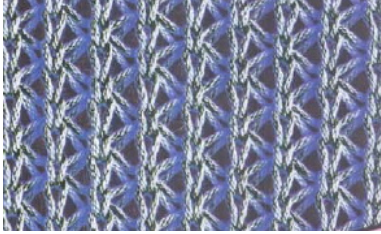
N
KX

On the back bed bring the last needle at right and left of the knitting to Working Position.

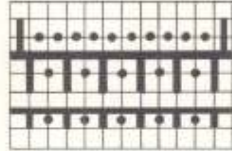
Note:
1 row of squares = 1 row of knitting
1 white square = 1 stitch
1 black square = 1 tuck

135

(PB p 7)



Single-bed tuck stitch pattern with alternate needles



N
KX

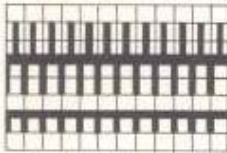
On the back bed bring the last needle at right and left of the knitting to Working Position.

136

(PB p 7)



Double-bed tuck stitch pattern



N
KX

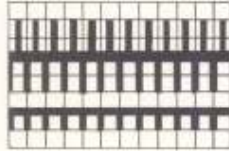
1 white square = 2 tucks

137

(PB p 30)



Double-bed tuck stitch pattern



N
KX

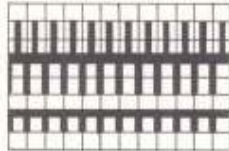
Note:
1 row of squares = 4 rows of knitting
1 white square = 4 tucks

139

(PB p 30)



Double-bed tuck stitch pattern in 2 colours



N
KX

2 R col 1
4 R col 2

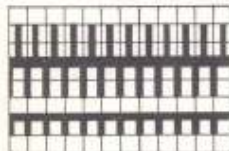
1 black square = 2 tucks

141

(PB p 21)



Double-bed tuck stitch pattern in 2 colours



N
KX

4 R col 1
4 R col 2

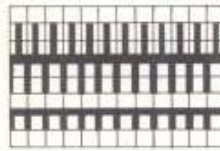
1 black square = 2 tucks

142

(PB p 20)



Double-bed tuck stitch pattern in 2 colours



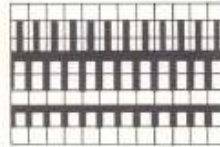
N
KX
2 R col 1
8 R col 2

143

(PB p 20)



Double-bed tuck stitch pattern with honeycomb effect in 2 colours



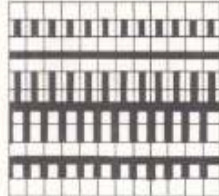
N
KX
10 R col 1
10 R col 2

144

(PB p 20)



Double Fisherman's rib



AX ←
KX

2 R col 1
2 R col 2

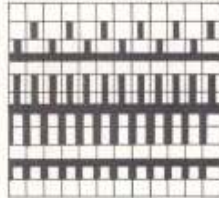
Cannot be combined with a stitch pattern.

145

(PB p 38)



Double-bed tuck stitch pattern



2R N
2R AX
KX

Semi-automatic

Cannot be combined with a stitch pattern.

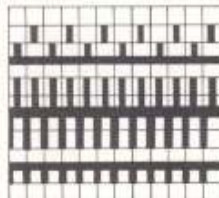
(The pusher setting on the back bed may be the same as on the front bed or reversed, which will give the knitting a slightly different look.)

146

(PB p 27)



Double-bed tuck stitch pattern



4R N
4R AX
KX

Semi-automatic

Cannot be combined with a stitch pattern.

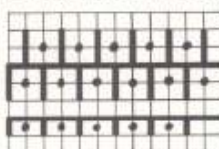
(The pusher setting on the back bed may be the same as on the front bed or reversed which will give the knitting a slightly different look.)

147

(PB p 24, 28)



Double-bed tuck stitch pattern in 1:1 rib

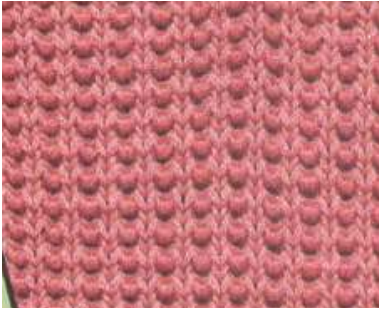


N
KX

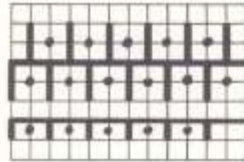
1 row of squares = 2 rows of knitting
1 white square = 2 tucks

148

(PB p 32)



Double-bed tuck stitch pattern in 1:1 rib



N
KX

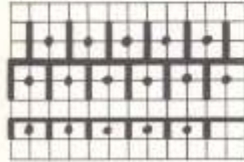
1 row of squares = 2 rows of knitting
1 black square = 2 tucks

149

(PB p 30)



Double-bed tuck stitch pattern in 1:1 rib



N
KX

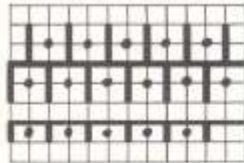
1 row of squares = 4 rows of knitting
1 white square = 4 tucks

150

(PB p 22)



Double-bed tuck stitch in 1:1 rib

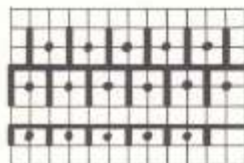


N
KX

1 row of squares = 4 rows of knitting
1 black square = 4 tucks

151

Double-bed tuck stitch pattern, in 2 colours, reversible



N
KX

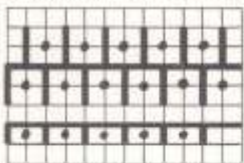
4 R col 1
4 R col 2

152

(PB p 21)



Double-bed tuck stitch pattern, in 2 colours, reversible fabric



2R N
4R GX
KX

Semi-automatic

2 R col 1
4 R col 2

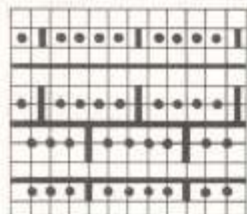
153

Cannot be combined with stitch pattern.

(PB p 20)

Note: For this pattern the colour change will not be indicated. Always when the display for the setting of the back lock appears, also change the colour.

Double-bed tuck stitch pattern over a wider needle distance



AX ←
KX

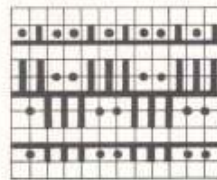
Particularly suitable for thicker yarns.

154

Cannot be combined with stitch pattern.



Double-bed lace effect with tuck stitch



4R N
4R AX
KX

Semi-automatic

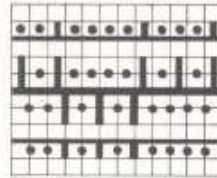
Cannot be combined with stitch pattern.

155

(PB p 25)



Lace effect pattern using alternate needles



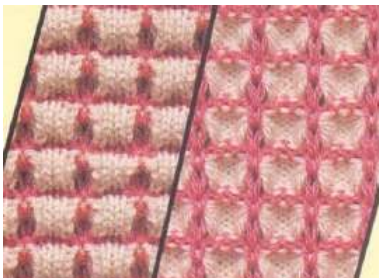
4R N
4R AX
KX

Semi-automatic

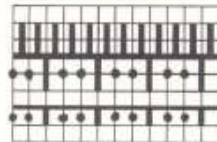
Cannot be combined with stitch pattern.

156

(PB p 30)



Double-bed tuck stitch pattern in 2 colours



N
KX

2 R col 1
4 R col 2

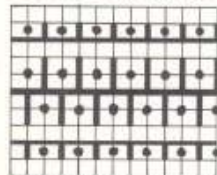
Cannot be combined with stitch pattern.

157

(PB p 21)



Double Fisherman's rib using alternate needles in 2 colours



AX ←
KX

2 R col 1
2 R col 2

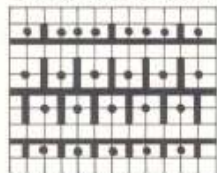
Cannot be combined with stitch pattern.

158

(PB p 21)



Double-bed tuck stitch pattern using alternate needles



2R N
2R AX
KX

Semi-automatic

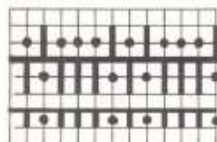
Cannot be combined with stitch pattern.

159

(PB p 25)



Double-bed lace effect tuck stitch



4R N
4R AX
KX

Semi-automatic

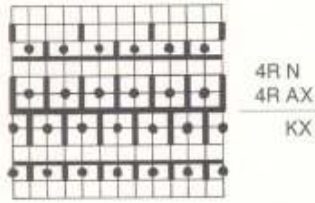
Cannot be combined with stitch pattern.

160

(PB p 30)



Double-bed tuck stitch pattern in 1 : 1 needle formation



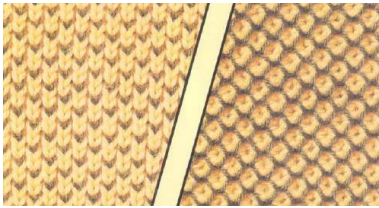
Note:
1 row of squares = 4 rows of knitting

Semi-automatic

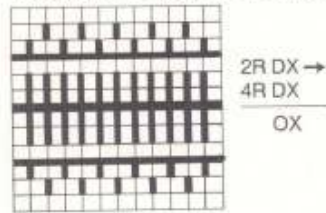
Cannot be combined with stitch pattern.

161

(PB p 26)



Tuck stitch pattern in tubular knitting and 2 colours



Semi-automatic

2 R col 1
4 R col 2

Cannot be combined with stitch pattern.

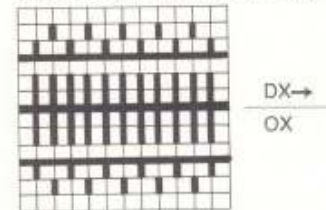
Note: For this pattern change of colour will not be displayed. When the display for the back lock setting changes you must change the colour too.

162

(PB p 40)



Tuck stitch pattern in tubular knitting and 2 colours

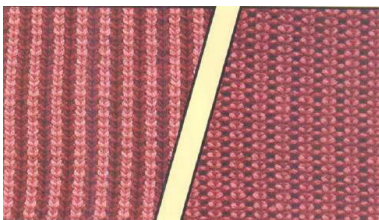


2 R col 1
2 R col 2

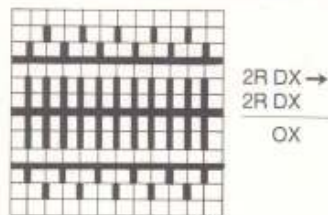
Cannot be combined with stitch pattern.

163

(PB p 40)



Tuck stitch pattern in tubular knitting and 2 colours



4 R col 1
4 R col 2

Semi-automatic

Cannot be combined with a stitch pattern.

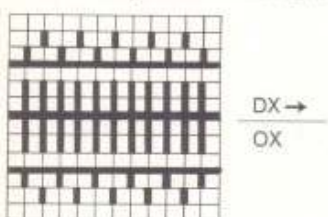
Note: For this pattern change of colour will not be displayed. When the display for the back lock setting changes you must change the colour too.

164

(PB p 40)



Tuck stitch pattern in tubular knitting and 2 colours



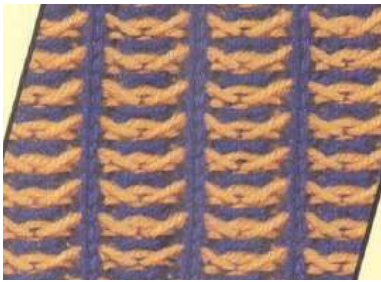
2 R col 1
6 R col 2

Cannot be combined with a stitch pattern.

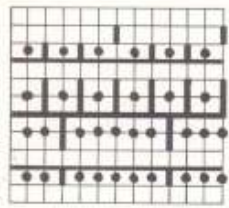
Note: For this pattern change of colour will not be displayed. When the display for the back lock setting changes you must change the colour too.

165

(PB p 39)



Lace effect tuck stitch pattern, suitable for thicker yarns



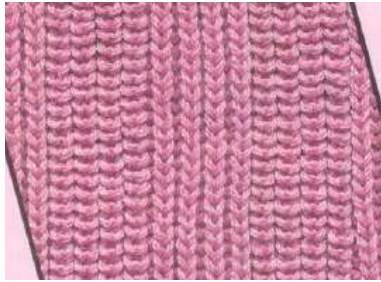
BX ↔
KX

Cannot be combined with a stitch pattern.

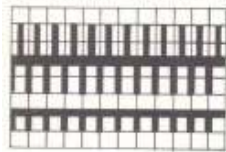
This pattern may be knitted in two colours in which case change the colour every alternate row.

166

(PB p 20)



Patterned Fisherman's rib



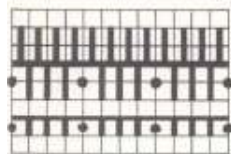
EX
KX

167

(PB p 30)



Patterned Fisherman's rib



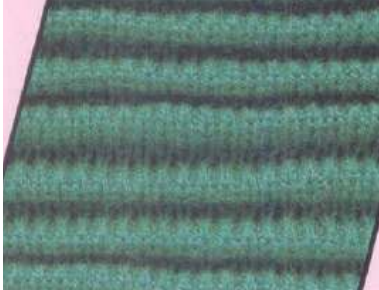
N
KX

Cannot be combined with a stitch pattern.

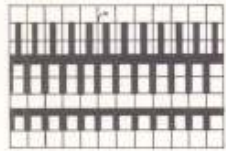
168

(PB p 32)

KNITTING TECHNIQUES FOR PINTUCK PATTERNS



A pintuck formed where there are white squares in the stitch pattern



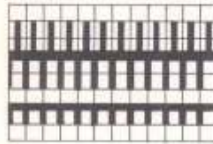
For each row of squares, two rows are knitted on the front bed.

251

(PB p 110)



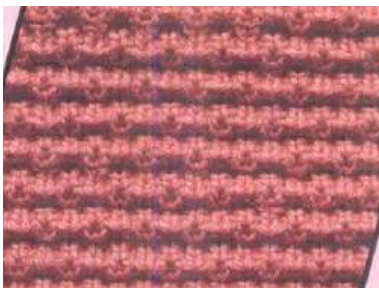
A pintuck formed where there are black squares in the stitch pattern.



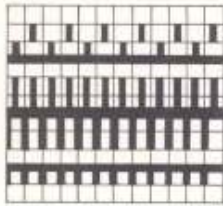
For each row of squares, one row is knitted on the front bed.

253

(PB p 110)



A pintuck formed where there are white squares in the stitch pattern.
Pintuck with spotted effect



For each row of squares, one row is knitted on the front bed.

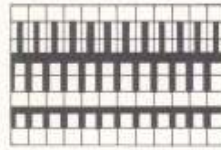
255

(PB p 110)

KNITTING TECHNIQUES FOR RACKING PATTERNS



Racking pattern with one tuck every 2 rows



N
KX

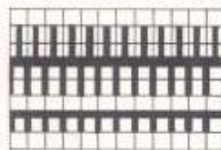
Maximum lengthening × 6

259

(PB p 118)



Racking pattern with Fisherman's Rib



EX
KX

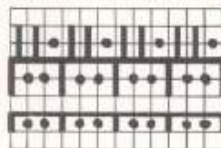
Note:
May not be lengthened.
Cannot be combined with a stitch pattern.

260

(PB p 118)



Racking pattern for double-side fabric



N
KX

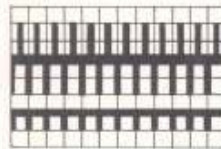
Note:
May not be lengthened.
Cannot be combined with a stitch pattern.

262

(PB p 119)



Racking pattern with two tucks on the front bed every 2 rows



N
KX

Maximum lengthening × 6

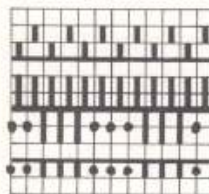
Note:
Cannot be combined with a stitch pattern.

263

(PB p 113)



Racking pattern in 2 colours



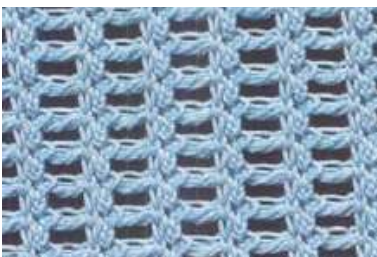
BX ↔
LX

Maximum lengthening × 6

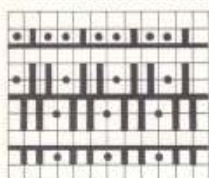
Note:
Cannot be combined with a stitch pattern.

264

(PB p 119)



Racking pattern with lace effect in tuck

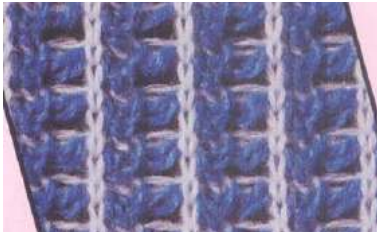


4R AX
2R N
KX

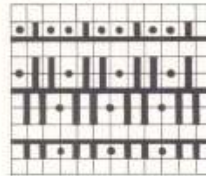
Note:
Cannot be altered.
Cannot be combined with a stitch pattern.
Semi-automatic

265

(PB p 128)



Racking pattern in 2 colours, with lace effect in tuck



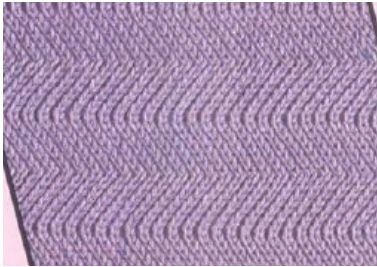
4R AX
2R N
KX

Note:
Cannot be altered.
Cannot be combined with a stitch pattern.

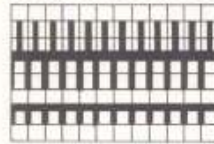
Semi-automatic
Note: For this pattern change of colour will not be displayed. When the display for the back lock setting changes you must change the colour

266

(PB p 113)



Fisherman's Rib racking pattern with large zig-zag effect



EX
KX

Note:
Cannot be altered.

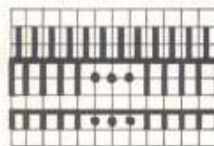
Cannot be combined with a stitch pattern.

267

(PB p 118)



Racking pattern with pintuck effect



N
LX

Note:
Cannot be altered.

Cannot be combined with a stitch pattern.

268

(PB p 121)



Racking pattern with contrasting stitch patterns in the same row



EX
KX

Note:
Cannot be altered.

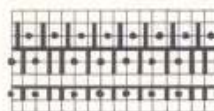
Cannot be combined with a stitch pattern.

269

(PB p 120)



Racking pattern with contrasting stitch patterns in the same row



EX
KX

Note:
Maximum lengthening × 6.

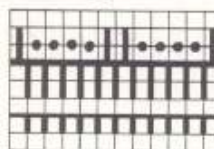
Cannot be combined with a stitch pattern.

270

(PB p 120)



Racking pattern with tuck stitch effect



EX
KX

Note:
Maximum lengthening × 6

Bring back bed needles into Working Position, as desired.

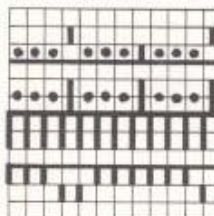
Cannot be combined with a stitch pattern.

271

(PB p 113)



Racking pattern with bobble effect using U 100E



1R BX ←
7R BX
KX

Semi-automatic
Note:
Cannot be altered.

Cannot be combined with a stitch pattern.

272

(PB p 120)