

Farm animals frolic their way around Susan Guagliumi's fetching wool sweaters.

This page: The cows come home on a blue pullover with checkerboard trim.

Opposite: Piggies play in the sun and a duck family waddles across the body and sleeves of these adorable little pullovers. All knit in "Anti-Tickle DK" by King Cole/Classic Elite Yarns.

cute cows
**dapper
ducks**
perky pigs

7

INTERMEDIATE

Sized for Girl's 2 (4, 6).
Shown in size 4
on page 28.



MATERIALS

- Anti-Tickle DK by King Cole/Classic Elite Yarns, 1 3/4oz/50g balls, each approx 123yd/112m (wool)
- 4 (5, 5) skeins in #26 blue (MC)
 - 2 skeins in #1 white (A)
 - 1 skein each in #55 yellow (B) and #109 rust (C)
 - Small amount in #24 green (D) and #48 black (E)
 - One pair each sizes 3 and 5 (3 and 3.75mm) needles OR SIZE TO OBTAIN GAUGE
 - Size 3 (3mm) circular needle, 16"/40 cm long
 - 6 small black buttons or beads for eyes.
 - Size E/4 (3.5mm) crochet hook
 - Bobbins

FINISHED MEASUREMENTS

- Chest 26 (28, 30)"/66 (71, 76)cm
- Length (with lower edge rolled) 13 1/2 (15, 16 1/2)"/34 (38, 42)cm
- Upper arm 13 (14, 15)"/33 (35, 38)cm

GAUGE

22 sts and 30 rows to 4"/10cm over St st using larger needles.

TAKE TIME TO CHECK YOUR GAUGE.

Notes 1) Use a separate bobbin of yarn for each block of color. When changing colors, twist yarns on WS to prevent holes in work. 2) If desired, small areas of color can be worked in duplicate st after pieces are knit. 3) All length measurements are given with the lower edge rolled.

K3, P3 RIB

(multiple of 6 sts plus 1)

Row 1 (RS) K2, *p3, k3; rep from *, end p3, k2.

Row 2 K the knit sts and p the purl sts.

Rep rows 1 and 2 for k3, p3 rib.

BACK

With smaller needles and A, cast on 67 (73, 79) sts. Work in St st for 6 rows. Work in k3, p3 rib for 10 rows. Change to larger needles. With MC, k next row on RS, inc 6 (4, 4) sts evenly spaced across—73 (77, 83) sts. Cont in St st for 1 (5, 11) rows more. Beg and end as indicated, work rows 1-75 of back chart, then cont with MC only until piece measures 13 1/2 (15, 16 1/2)"/34 (38, 42)cm from beg. Bind off all sts.

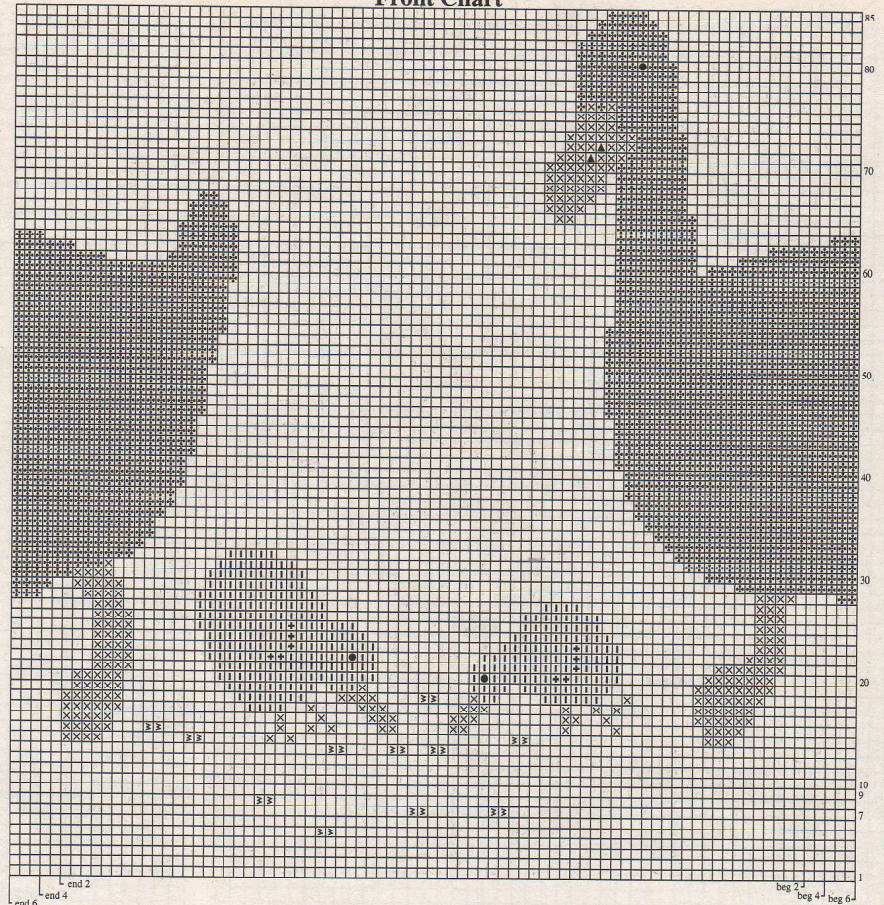
FRONT

Work as for back, working 1 row in St st with MC above rib before working chart. Work front chart beg with row 9 (7, 1) through row 85, then cont with MC only, AT SAME TIME, when piece measures 10 1/2 (11 1/2, 13)"/26.5 (29, 33)cm from beg, work neck as foll:

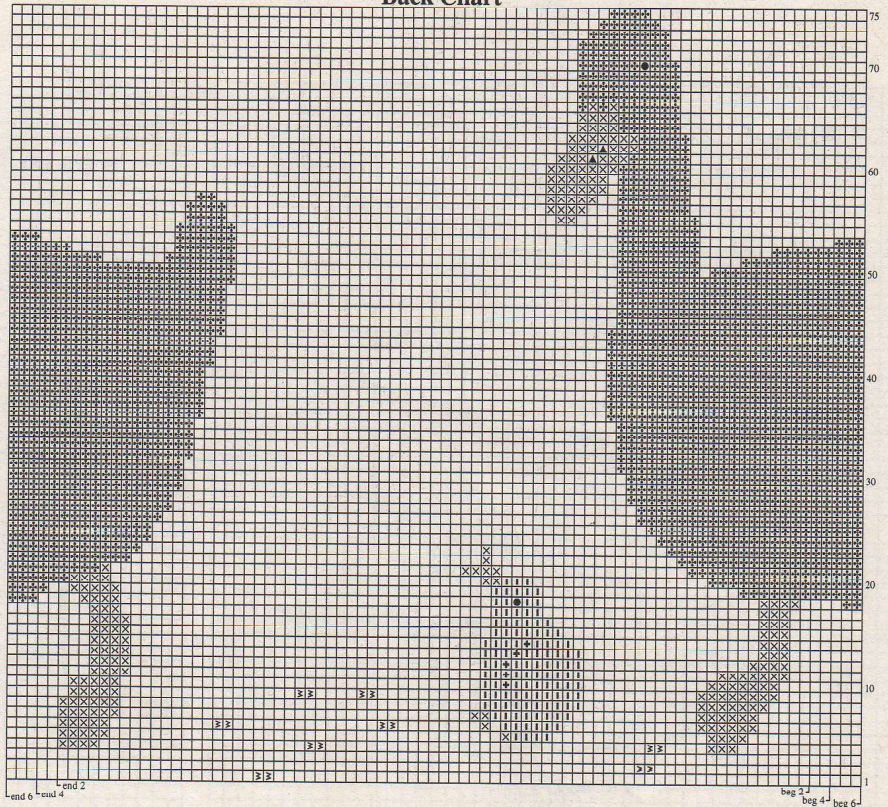
Neck shaping

Next row (RS) Work 34 (35, 38) sts, join 2nd ball of yarn and bind off center 5 (7, 7) sts, work to end. Working both sides at once with separate balls of yarn, bind off from each neck edge 3 sts 3 times, 2 sts once, dec 1 st every other row once, every 4th row twice. Work even until same length

Front Chart



Back Chart



Color Key

- | | |
|--------------|--|
| □ Blue (MC) | ⊗ French knot with green (D) |
| ⊕ White (A) | ▲ Duplicate st with black (E) |
| □ Yellow (B) | ⊕ Pick-up sts for wing with yellow (B) |
| ⊗ Rust (C) | ● Black bead |

as back. Bind off rem 20 (21, 24) sts each side for shoulders.

RIGHT SLEEVE

With smaller needles and A, cast on 37 (43, 49) sts and work St st and rib as for back. Change to larger needles and MC. K next row on RS, inc 4 (2, 0) sts evenly spaced across—41 (45, 49) sts. Cont in St st with MC, inc 1 st each side every 4th row 14 (13, 12) times, every 6th row 2 (3, 5) times—73 (77, 83) sts. Work even until piece measures 11½ (12, 13)"/29 (30.5, 33)cm from beg. Bind off all sts.

LEFT SLEEVE

Work same as right sleeve, working small duck from back chart in center of sleeve beg at 18 rows above rib.

FINISHING

Block pieces to measurements. Embroider French knots and duplicate st foll chart. Sew on beads for eyes. Sew shoulder seams.

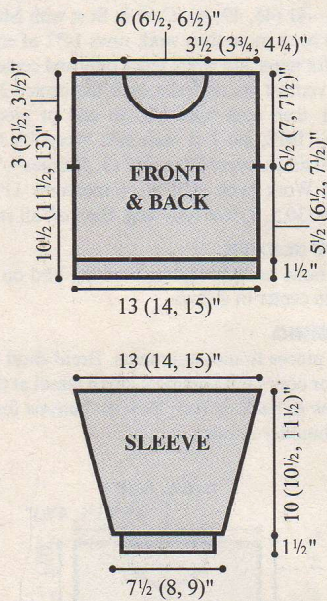
Neckband

With RS facing, circular needle and A, pick up and k 78 (84, 84) sts evenly around neck edge. Join and work in k3, p3 rib for 1"/2.5cm. Work in St st (k every rnd) for 6 rnds. Bind off loosely knitwise.

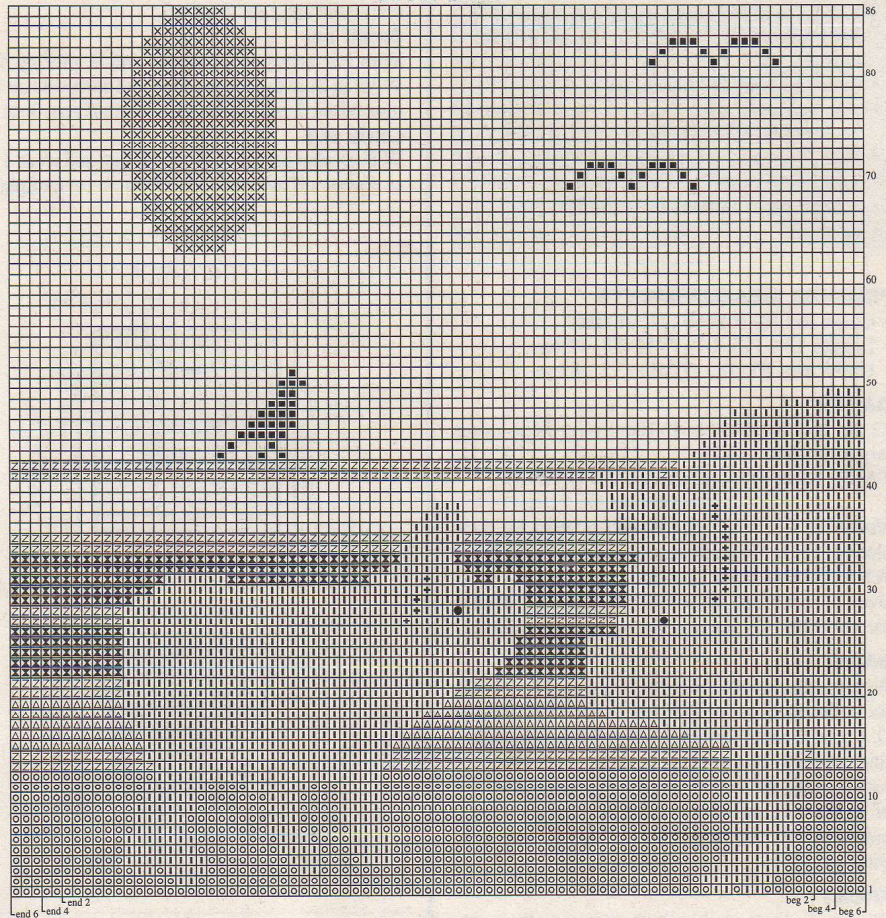
Place makers 6½ (7, 7½)"/16.5 (17.5, 19)cm down from shoulder seams on front and back for armholes. Sew top of sleeves between markers. Sew side and sleeve seams.

Chick's wing

Pick up 5 sts along the line indicated on chart, work 4 rows st st. Bind off 1 st at beg of next row. Work 1 row even. Bind off 1 st at beg of next row. Bind off rem 3 sts.



Front Chart



Back Chart



8

INTERMEDIATE

Sized for Girl's 2 (4, 6).
Shown in size 4
on page 28.



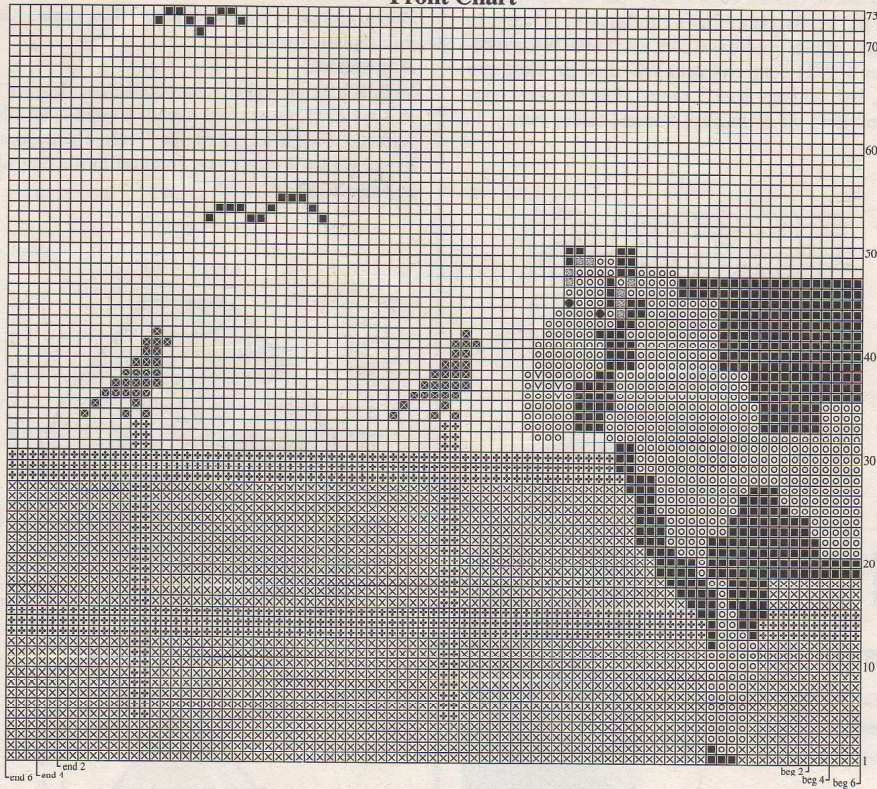
MATERIALS

Anti-Tickle DK by King Cole/Classic Elite Yarns,
1¼oz/50g balls, each approx 123yd/112m
(wool)
• 3 (4, 4) skeins #26 blue (MC)

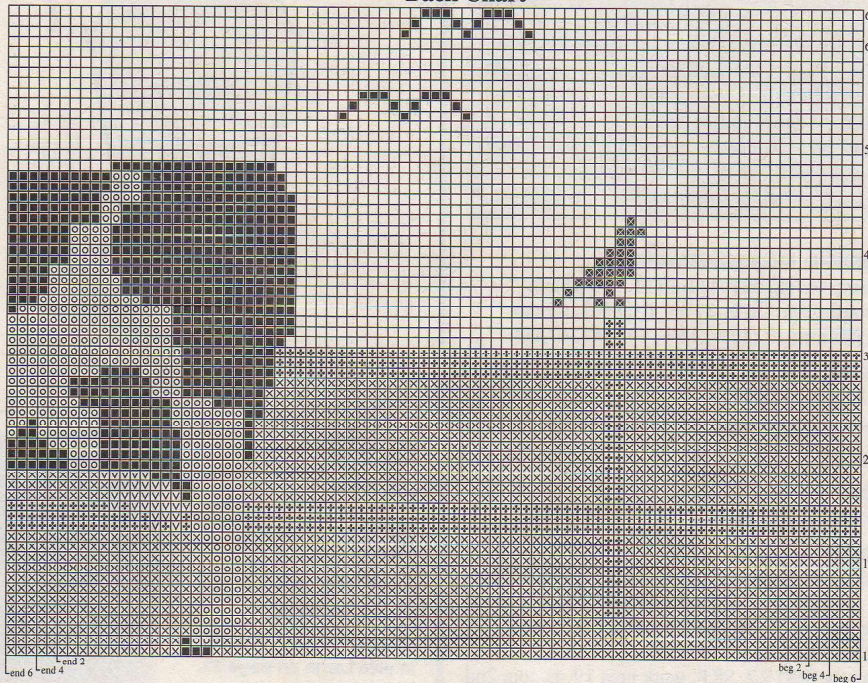
Color Key

- Blue (MC)
- Pale green (D)
- Brown (A)
- Tan (E)
- Pink (B)
- Yellow (F)
- Pick-up for ear in pink (B)
- Black (G)
- Dk. Brown (C)
- Black bead

Front Chart



Back Chart



Neckband

With RS facing, circular needle and MC, pick up and k 78 (84, 84) sts evenly around neck edge. Join and work in 12 rows of border chart. With A, k 1 rnd, p 1 rnd, then cont in St st (k every rnd) for 12 rnds. Bind off loosely knitwise. Fold band in half to WS and sew in place.

Place markers 6½ (7, 7½)"/16.5 (17.5, 19)cm down from shoulder seams on front and back for armholes. Sew top of sleeves between markers. Sew side and sleeve seams.

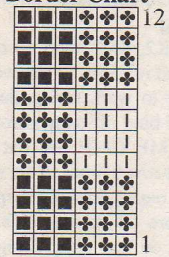
Cow's ears

Pick up 4 sts as indicated on chart. Work in St st for 3 rows. Dec 1 st each side on next row. K2tog on last row and fasten off.

Color Key

- Blue (MC)
- White (A)
- Green (B)
- Black (C)
- Off white (D)
- Royal blue (E)
- Pink (F)
- Duplicate st in black (C)

Border Chart



6-st rep

10

INTERMEDIATE

Sized for Small
(Medium, Large).
Shown in size Medium
on page 30.



MATERIALS

8 Ply by Wool Pak Yarns NZ/Babajoes Wool Co., 7¼oz/250g hanks, each approx 525yd/472m (wool)

- 4 (4, 5) hanks in natural
- One pair each sizes 3 and 5 (3 and 3.75mm) needles OR SIZE TO OBTAIN GAUGE
- Sizes 3 and 5 (3 and 3.75mm) circular needles, 16"/40cm long
- Stitch holders

FINISHED MEASUREMENTS

- Bust 44 (48, 53)"/111.5 (122, 134.5)cm
- Length 25½ (26½, 27¼)"/64.5 (67, 69)cm
- Upper arm 17 (17¾, 18½)"/43 (45, 47)cm

GAUGE

21 sts and 38 rows to 4"/10cm over pat st using larger needles.

TAKE TIME TO CHECK YOUR GAUGE.

PATTERN STITCH

(multiple of 4 sts plus 3 see chart)

Note Follow written instructions or chart for pat st.

Row 1 (RS) K3, *p1, k3; rep from * to end. **Row 2** K1, *p1, k3; rep from * to last 2 sts, p1, k1. **Row 3** Rep row 1. **Row 4** Rep row 2. **Rows 5 and 7** Rep row 2. **Rows 6 and 8** Rep row 1. Rep rows 1-8 for pat st.

BACK

With smaller needles, cast on 114 (126, 138) sts. Work in k1, p1 rib for 2 rows. **Next row (RS)** K2, *p2, k2; rep from * to end. Cont in k2, p2 rib as established until piece measures 2"/5cm from beg, inc 1 st at end of last WS row—115 (127, 139) sts. Change to larger needles. Work in pat st until piece measures 15"/38cm from beg, end with a WS row.

Raglan armhole shaping

Bind off 3 sts at beg of next 2 rows—109 (121, 133) sts. **Dec row (RS)** K2, SKP, work in pat to last 4 sts, k2tog, k2. Keeping first and last 3 sts in St st, work 3 rows even. Rep last 4 rows 7 (6, 5) times more—93 (107, 121) sts. Then, rep dec row every other row 29 (35, 41) times—35 (37, 39) sts. Bind off.

FRONT

Work as for back until there 91 (97, 103) sts and armhole measures approx 3¾ (4¼, 4½)"/8 (11, 11.5)cm.

Beg placket opening

Next row (RS) K2, SKP, work pat over 38 (41, 44) sts, join 2nd ball of yarn and bind off center 7 sts, work pat to last 4 sts, k2tog, k2. Cont to work both

- 1 (2, 2) skeins #142 brown (A)
- 1 skein each #94 pink (B), #23 dk brown (C), #165 pale green (D), #39 tan (E) and #55 yellow (F)
- Small amount #48 black (G)
- One pair each sizes 3 and 5 (3 and 3.75mm) needles OR SIZE TO OBTAIN GAUGE
- Size 3 (3mm) circular needle, 16"/40cm long
- Size E/4 (3.5mm) crochet hook
- 3 small black buttons or beads for eyes
- Bobbins

FINISHED MEASUREMENTS

- Chest 26 (28, 30)"/66 (71, 76)cm
- Length 13½ (15, 16½)"/34 (38, 42)cm
- Upper arm 13 (14, 15)"/33 (35, 38)cm

GAUGE

22 sts and 30 rows to 4"/10cm over St st using larger needles.

TAKE TIME TO CHECK YOUR GAUGE.

Notes 1) Use a separate bobbin of yarn for each block of color. When changing colors, twist yarns on WS to prevent holes in work. 2) If desired, small areas of color can be worked in duplicate st after pieces are knit. 3) Sun rays are worked in stem stitch.

BACK

With smaller needles and MC, cast on 73 (77, 83) sts and work in garter st as foll: 3 rows MC, 4 rows D, 4 rows E and 4 rows A. Change to larger needles. Beg with a p row, work in St st for 3 (5, 11) rows with A. Beg and end as indicated, work rows 1-74 of back chart, then cont with MC only until piece measures 13½ (15, 16½)"/34 (38, 42)cm from beg. Bind off all sts.

FRONT

Work as for back, working 1 (3, 9) rows in St st with A above garter st before working chart, and work front chart through row 66 (72, 76). Piece measures approx 10½ (11½, 13)"/26.5 (29, 33)cm from beg.

Neck shaping

Next row (RS) Work 34 (35, 38) sts, join 2nd ball of yarn and bind off center 5 (7, 7) sts, work to end. Working both sides at once with separate balls of yarn, bind off from each neck edge 3 sts 3 times, 2 sts once, dec 1 st every other row once, every 4th row twice. Work even until same length as back. Bind off rem 20 (21, 24) sts each side for shoulders.

SLEEVES

With smaller needles and MC, cast on 41 (45, 49) sts and work garter st as for back. Change to larger needles and beg with a p row, work in St st and stripes as foll: 13 rows A, 2 rows C, 5 rows E, [2 rows C, 5 rows D] twice, 2 rows C, 5 rows MC, 2 rows C, then cont with MC to end of sleeve, AT SAME TIME, inc 1 st each side every 4th row 14 (13, 12) times, every 6th row 2 (3, 5) times—73 (77, 83) sts Work even until piece measures 11½ (12, 13)"/29 (30.5, 33)cm from beg. Bind off all sts.

FINISHING

Block pieces to measurements. Sew shoulder seams.

Neckband

With RS facing, circular needle and MC, pick up and k 78 (84, 84) sts evenly around neck edge. Join and work in garter st (k 1 rnd, p 1 rnd) in foll stripes: 3 rnds MC, 4 rnds D, 4 rnds E, 3 rnds A. Bind off knitwise with A.

Place makers 6½ (7, 7½)"/16.5 (17.5, 19)cm down from shoulder seams on front and back for arm-holes. Sew top of sleeves between markers. Sew side and sleeve seams. Embroider sun rays with F using stem st.

Large ear

With RS facing, larger needle and B, pick up 10 sts (see chart for placement). Work in St st for 4 rows.

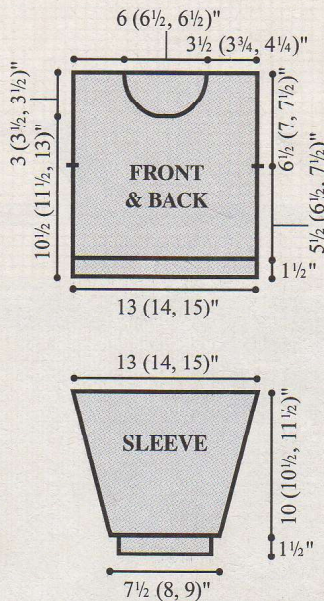
Dec 1 st each side on next row, then every other row until there are 2 sts. Bind off.

Small ear

With RS facing, larger needle and B, pick up 5 sts. Work in St st for 3 rows. Dec 1 st each side on next row. Work 2 rows even then bind off rem 3 sts.

Curly tail

With crochet hook and B, ch 10, turn and work 1 row sc. Fasten off and use ends to sew to back of pig.



9

INTERMEDIATE

Sized for Girl's 2 (4, 6).
Shown in size 4
on page 29.



MATERIALS

- Anti-Tickle DK* by King Cole/Classic Elite Yarns, 1¾oz/50g balls, each approx 123yd/112m (wool)
- 3 (4, 4) skeins in #26 blue (MC)
 - 2 skeins in #1 white (A)
 - 1 (1, 2) skeins in #24 green (B)
 - 1 skein each in #48 black (C), #46 off white (D), #21 royal blue (E), small amount #94 pink (F)
 - One pair each sizes 3 and 5 (3 and 3.75mm) needles OR SIZE TO OBTAIN GAUGE
 - Size 3 (3mm) circular needle, 16"/40 cm long
 - 2 small brown buttons for eyes
 - Bobbins

FINISHED MEASUREMENTS

- Chest 26 (28, 30)"/66 (71, 76)cm
- Length 13½ (15, 16½)"/34 (38, 42)cm
- Upper arm 13 (14, 15)"/33 (35, 38)cm

GAUGE

22 sts and 30 rows to 4"/10cm over St st using larger needles.

TAKE TIME TO CHECK YOUR GAUGE.

Notes 1) Use a separate bobbin of yarn for each block of color. When changing colors, twist yarns on WS to prevent holes in work. 2) If desired, small

areas of color can be worked in duplicate st after pieces are knit.

BACK

With smaller needles and A, cast on 68 (74, 80) sts and work in St st for 10 rows. Work in garter st for 2 rows. Change to larger needles. Work row 1 of border chart as foll: K1 (selvage st), work 6-st rep 11 (12, 13) times, k1 (selvage st). Cont as established through row 12. Change to B and k next row on RS, inc 5 (3, 3) sts evenly across—73 (77, 83) sts. Cont in St st for 1 (5, 11) rows more. Beg and end as indicated, work rows 1-63 of back chart, then cont with MC only until piece measures 13½ (15, 16½)"/34 (38, 42)cm from beg. Bind off all sts.

FRONT

Work as for back, working front chart through row 73, then cont with MC only, AT SAME TIME, when piece measures 10½ (11½, 13)"/26.5 (29, 33)cm from beg, work neck as foll:

Neck shaping

Next row (RS) Work 34 (35, 38) sts, join 2nd ball of yarn and bind off center 5 (7, 7) sts, work to end. Working both sides at once with separate balls of yarn, bind off from each neck edge 3 sts 3 times, 2 sts once, dec 1 st every other row once, every 4th row twice. Work even until same length as back. Bind off rem 20 (21, 24) sts each side for shoulders.

LEFT SLEEVE

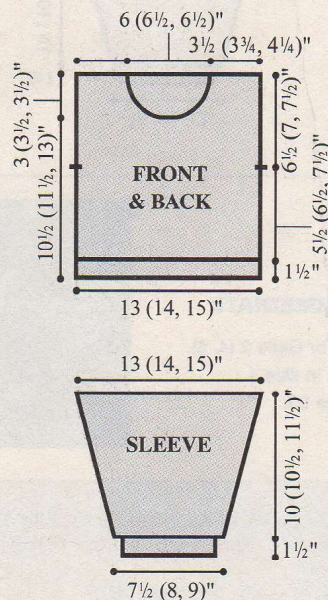
With smaller needles and A, cast on 36 (42, 48) sts and work in St st for 10 rows. Work in garter st for 2 rows. Change to larger needles. Work row 1 of border chart as foll: Work 6-st rep 6 (7, 8) times. Cont as established through row 12. Change to B and k next row on RS, inc 5 (3, 1) sts evenly spaced across—41 (45, 49) sts. Cont in St st with MC for 1 (5, 11) rows more then work rows 1-32 of chart for back (for grass and white fence only and center the 2 white vertical sts of fence over the center 2 sts of sleeve), then cont with MC to end of piece, AT SAME TIME, inc 1 st each side every 4th row 14 (13, 12) times, every 6th row 2 (3, 5) times—73 (77, 83) sts Work even until piece measures 11½ (12, 13)"/29 (30.5, 33)cm from beg. Bind off all sts.

RIGHT SLEEVE

Work same as right sleeve, working bird on top of fence in center of sleeve.

FINISHING

Block pieces to measurements. Braid short length of A for cow's tail leaving a small tassel at the end and sew to back of cow. Sew on buttons for eyes. Sew shoulder seams.



These Farmyard and Reptile Intarsia Sweaters for Children are reprinted here through the courtesy of Family Circle Easy Knitting Magazine. The Farmyard originally appeared in the Fall 1999 issue; the Reptiles in Spring/Summer 2004.

Please follow the charts and hand knit directions for actual placement of the intarsia motifs.

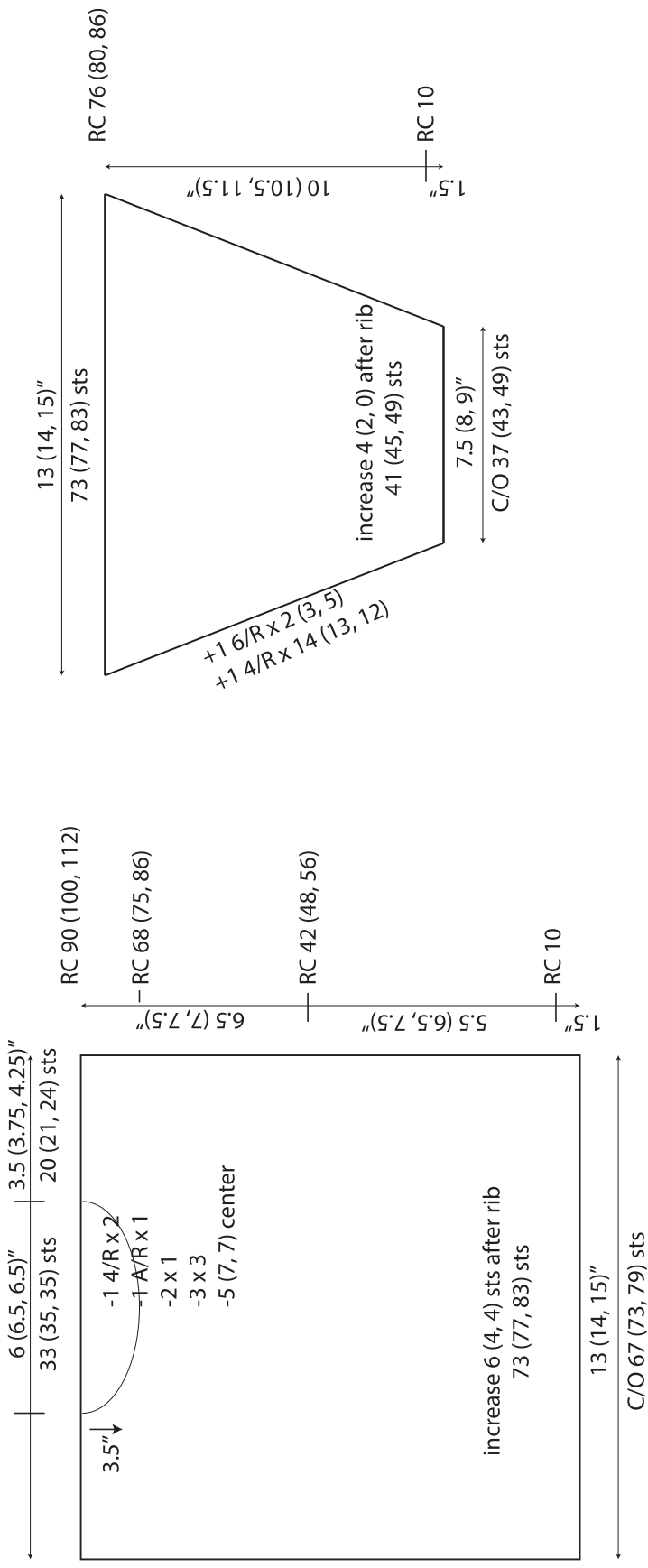
Patterns are suitable for mid-gauge and chunky gauge machines as written, but charts could be used with garments charted for standard gauge as well.

You must match gauge or be willing to make adjustments.

Ribs can be knitted by hand before/after OR you can latch up stitches.

I have inserted an additional schematic with row counts rather than inch measurements. Refer to this schematic for all sweaters when following general directions.

Machine Knit Schematic for Farmyard and Reptile Intarsia Sweaters



Reset RC after rib, but after that do not reset RC for each section; tag each edge at RC 42 (48, 56) to mark armholes for sleeve placement. For front, begin neckline shaping at RC 68 (75, 96). To shape neckline, with carriage on right and set to hold ndls in HP, hold center 5 (7, 7) ndls and all ndls to the left of them. Then, on alternate rows, hold 3 sts three times, 2 sts once, 1 st once. Every 4th row, decrease 1 st twice. Knit straight to RC 90 (100, 112) and scrap off or bind off rem 20 (21, 24) shoulder sts. Reset RC and repeat for second side of neckline.