

Susan
Guagliumi

Tulips, Twisters, & Popcorns

This sweater is a real challenge for those of you who enjoy hand-manipulated stitches! It features twisted stitches accented with popcorns, and tulip borders and insertions.



12

Size: Small/Medium (Medium/Large) to fit actual bust measurement up to 36 (42)".

Stitch Size: 5 or to get gauge in pattern. Model garment was knitted on the SK860.

Gauge: 5.75 STS/8 Rs = 1" in twisted STS pat.

Machine: SK860 or LK150 (6.5 mm mid-gauge).

Accessories: GB-6 garter bar.

Materials: Jenny Lynn "Pima Cotton" 100% cotton with 831 yd/lb, 26 (30) oz Blue.

Special Techniques

Latch Tool Edging: Bring NDLS to D pos. COR. Do latch tool C/O from L to RT, then thread the carr. *With SS 6, K 1 R. Remove yarn from carr and, without knitting, move COR. Bring all NDLS to D pos, keeping STS in the hooks of the NDLS. Do chain ST (latch tool C/O) on shafts of the NDLS, behind the fabric. At RT edge, remove last ST from NDL, hang ST from latch tool and pass free yarn under the NDL to rethread the carr. Replace last ST on NDL. ** Rep * to **.

Tulip Border/Insertion: The tulips at the lower edges of the garment and those at the armholes are identical except that both edges of the armhole insertions feature the latch tool edging. Each individual tulip begins with 7 STS and finally reduces down to 3 STS. Because of the initial number of STS required, you will need to K 2 sections for the lower front/back edges and 2 for

each armhole, seaming them at center front/back or shoulders, respectively. Knit 8 pieces as fol. Basic Tulip Borders: Chain C/O 128 (149) STS for 18 (21) reps plus 2 seam STS. K 3 Rs and reform the STS indicated with "X" in the chart (Fig 1). Do not reform the first or last STS on the bed. RC 3. Make decs shown on R4 of chart, then remove all STS on the GB, rehanging to fill in the empty NDLS. Put empty NDLS in NWP. K 3 R and reform the same STS as before. RC 6. Make decs shown on R7 of chart, remove on GB, rehang to fill in, and put empty NDLS in NWP. K 3 Rs and reform same STS as before. S/O borders for lower edges. For armhole insertions only, bring NDLS to D pos, keeping STS in hooks of NDLS to work 2 reps of latch tool edging then B/O. Leave 56 (65) empty NDLS in WP. Work latch tool C/O for 1 R, then with wrong side facing you rehang the C/O edge of finished tulip border. P/U only the reformed STS ("X" on chart), skipping every 3rd NDL. K 1 R, rep latch tool edging once. B/O loosely.

Bridged Popcorns: The NDLS between P/C are referred to as "bridges." P/C are K as part of every 14th R of the twisted ST pat rep and are K continuously from RT to L across that R. The first P/C should be made at RC 16. Turn off the RC and set Russel levers (I). COR. Place all NDLS in HP except the 2 for the first P/C at RT and all NDLS (the bridge) to the RT of them. K 1 R. Put bridge NDLS in HP. *K 3 Rs on the 2 P/C NDLS. Push back to UWP at the immediate L the NDLS for the next bridge and those for the next P/C (12 NDLS) and K 1 R. With a transfer tool, P/U the first R of the completed P/C and hang on the NDLS; the extra



Rs will pop to the front of the fabric. Bring to HP the NDLS of the P/C just completed as well as the bridge to the next P/C. Only the 2 NDLS for next P/C rem in WP. ** Rep * to ** all the way across the R. Advance the RC by 1 number and turn back on to cont. K next R with Russel levers (II). (See Fig. 2.)

Twisted Stitches Pattern: (See Fig. 3.) Pairs of STS are twisted every other R, with the pairs selected (not transferred) one ST further in either direction each time. That is, if STS 1 and 2 are twisted in R 2, STS 2 and 3 will be twisted in R 4. Remove 2 STS on a 2-prong tr tool and hold the tool slightly away from the bed. Insert a second 2-prong tool into the same STS from above so that the prongs point towards you. Remove the first tool. Twist the tool 180° to the RT or L as required in the pat. The rule for twist direction is this: If the diagonal line formed by the design slants towards the RT, twist to the RT; if it slants L, twist to the L. Be careful when lines cross and come tog that you cont to twist pairs correctly because if the direction of the twist is wrong the texture shows on the purl side of the fabric instead of the K side. Isolated mistakes can be fixed with duplicate ST later on. However, if you need to rip out entire Rs, you will have to untwist and replace STS on their original NDLS before you can rip out twisted Rs.

Knitting Directions

Tulip Borders/Insertions: Knit 4 tulip borders for front and back and 4 insertions for armholes.

Back: Knit 2 tulip border pieces. Bring 110 (128) NDLS to D pos with COR. Do latch tool C/O from L to RT, then thread the carr. With purl side facing you, rehang two of the tulip borders on same NDLS, doubling edge STS of each at center for seam allowance. Do 2 reps of latch tool edging. Change to SS 5, COR. RC 000. K twisted ST pat to RC 80 (96). RC 000. B/O 12 (15) STS at beg of next 2 Rs, then cont in pat to RC 72 (88) to shape back neck. Make a note of twisted ST pat R. COR, Russel levers (I). Hold center 22 (26) NDLS and all NDLS to L. Hold 1 NDL every R 8 times. At RC 80 (96) S/O rem 24(28) STS. COL. Ret all NDLS to L of and including #13L (22L) to WP to rep for second shoulder, cont pat. S/O all 38 (42) STS for center back neck.

Front: Knit same as for back to RC 60 (76) to beg front neck. COR. Hold center 12 (16) NDLS and all NDLS to the L. S/R 3, 2, KWK after each. Then S/R 1 ST EOR 8 times. At RC 80, S/O 24 (28) STS for shoulder. Repeat for second side. S/O 38 (42) STS for center front neck.

Continued on page 17.

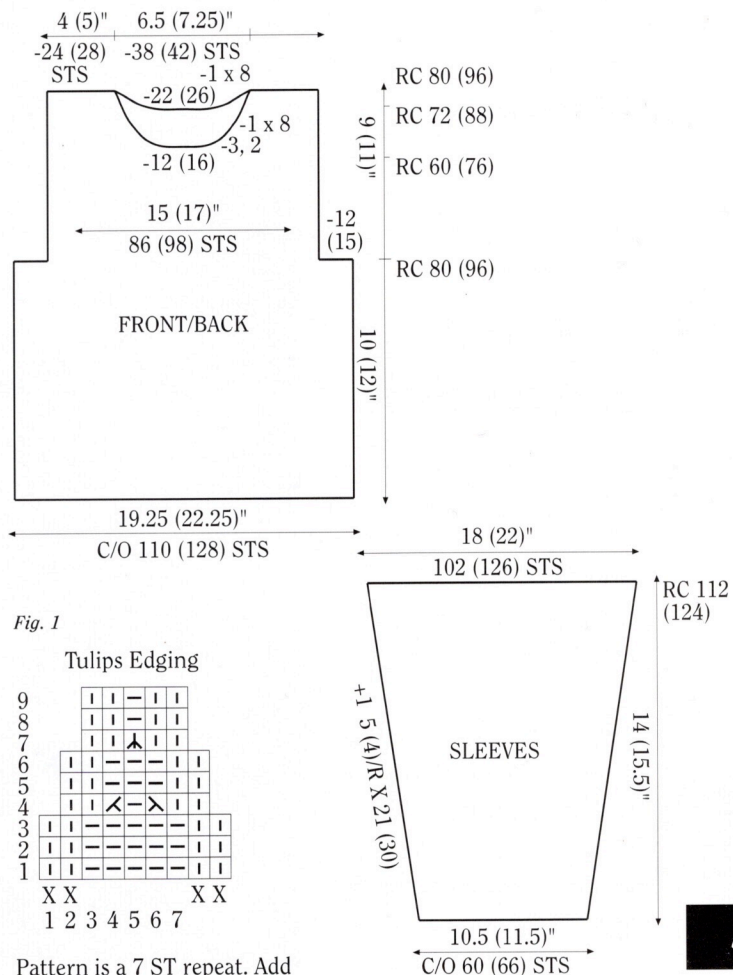
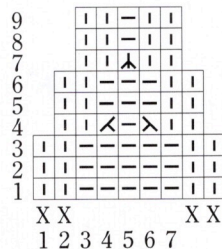


Fig. 1

Tulips Edging



Pattern is a 7 ST repeat. Add 2 STS to balance at end of last repeat. GB decs are made at RC 3 and RC 7.

X Latched up STS. (i)

- Plain purl STS

⋈ Tr ST 7 to NDL 6

⋈ Tr ST 3 to NDL 4

⋈ Tr STS 4 & 6 to NDL 5

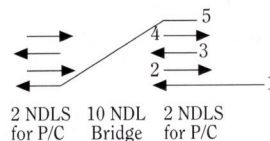
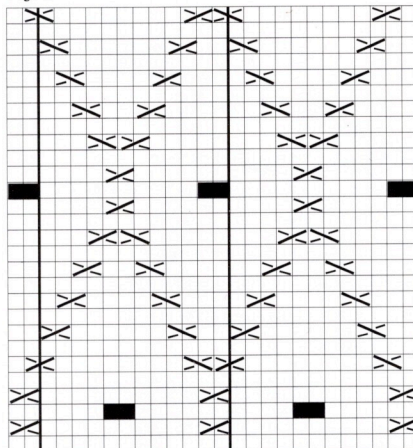


Fig. 2: Notice that the 5th R of each P/C also knits the bridge to the L and the 1st R of the next P/C.

Fig. 3



Complete 12 ST/28 R repeat of twisted STS pattern.

⋈ Right twist ⋈ Left twist

■ 2 ST Popcorn

Continued from page 13.

Sleeves: Make 2 alike. Do 3 reps of latch tool edging over 60 (66) NDLS. K 1 R. RC 000. K twisted ST pat, inc 1 ST every 5 (4) Rs, 21 (30) times. At RC 112 (124), S/O 102 (126) STS. (Note: This is a 3/4 length sleeve. Add 8 Rs for every additional inch to lengthen.)

Finishing Directions

Lightly press all pieces before assembling. Join tulip insertions to armholes of front and back with slip crochet. Join 1 shoulder

seam. Rehang entire neck edge on machine with wrong side facing you. K 5 Rs and reform 2nd and 3rd STS from edge by latching up. Cont to latch up every 2 out of 3 STS across fabric. Do 2 reps of latch tool edging. Remove on garter bar and turn the work over to B/O loosely with latch tool, catching the free yarn around a sinker post. Sew second shoulder seam. Join sleeves to edge of armhole tulip insertions with slip crochet. Sew side seams, underarm seams, and short seams in center front/back of tulip edging.

Susan Guagliumi is the Education Director for Studio by White Knitting Machines and the Editor of *Design* magazine.

D E S 7 9 N
f a l l w i n t e r 1 9 9 3