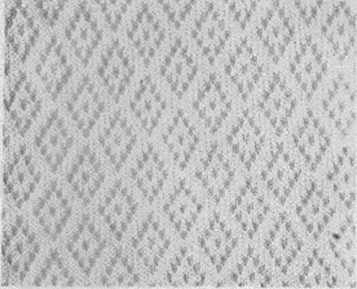


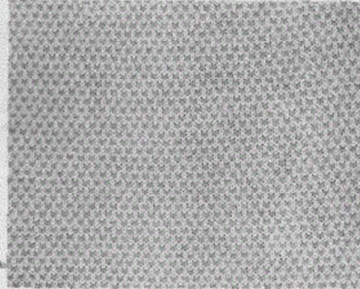
HANDY PUNCH[®]
PATTERN SET 51-52

THESE PATTERNS ARE SUITABLE
FOR USE WITH KNITMASTER MACHINES
MODELS 313, 321, 323, 325.

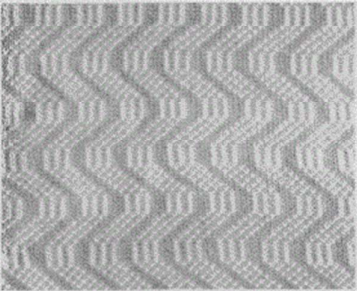
Empireal
Knitmaster



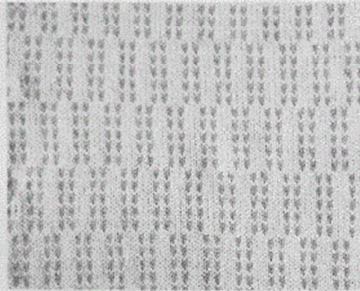
231



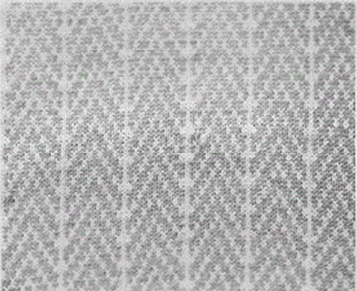
232



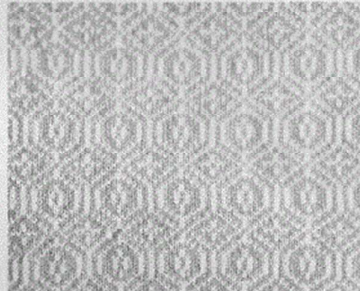
233



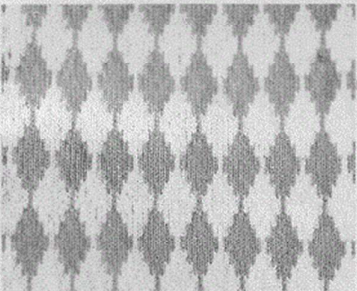
234



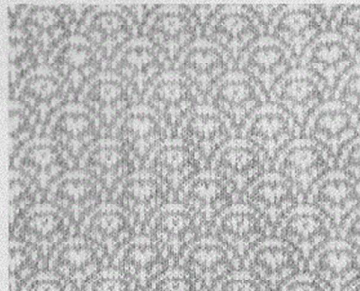
235



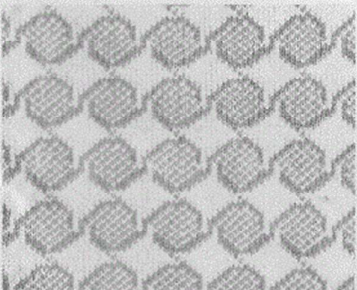
236



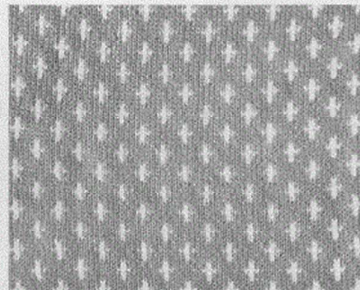
237



238



239

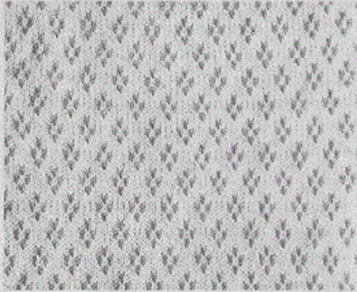


240

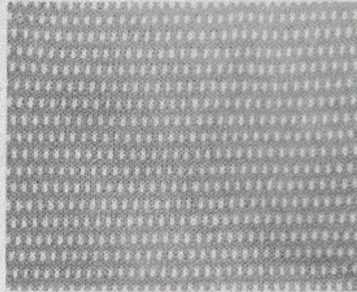
**HANDY PUNCH.
PATTERN SET 51-52**

THESE PATTERNS ARE SUITABLE
FOR USE WITH KNITMASTER MACHINES
MODELS 313, 321, 323, 325.

Empisal
Knitmaster



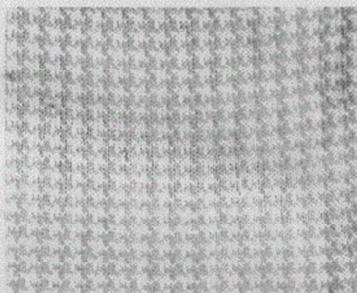
221



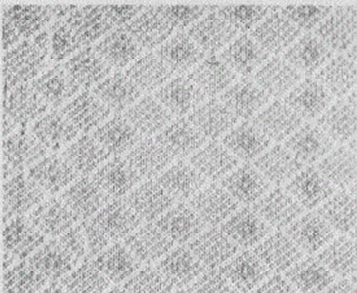
222



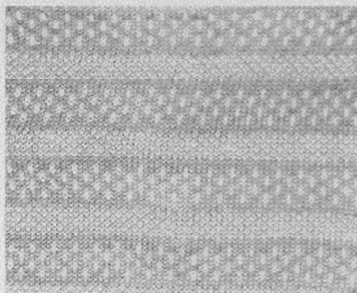
223



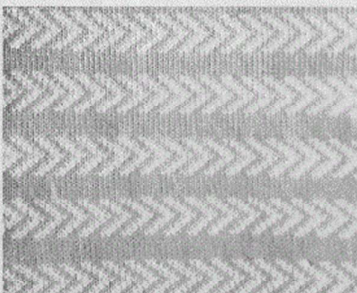
224



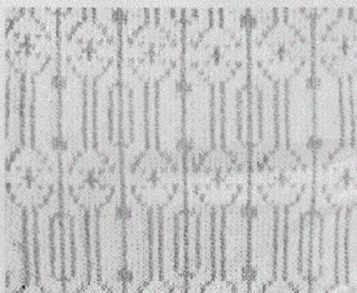
225



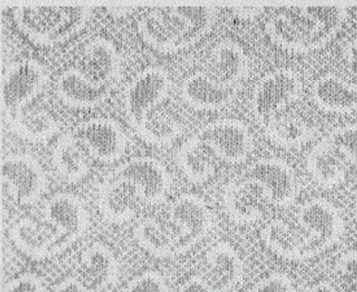
226



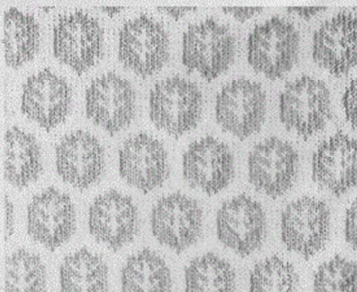
227



228



229



230

SET 51-52

INSTRUCTIONS FOR YOUR PUNCHCARDS – VARIATIONS

CARD 221 TUCK – SLIP – WEAVE – FAIRISLE
TUCK – VARIATION 1. Lace with Needles in A position. Needle position starting from centre to each LEFT and RIGHT
o l o l l l o l o l l l o l o l l l o l o l l l o l o l l l o l l l o l l l o l l l o l l l

Machine
Centre

o – needles in A position.
l – needles in B position.

When you start knitting this pattern, you will need to transfer the stitches of the needles which must go to A position onto the adjacent needles.

TUCK – VARIATION 2. Using 2 colours in Feeder 1
After pre-setting row 60 – 1 –
*Knit 2 rows col. 1 in Feeder 1. Knit 2 rows col. 2 in Feeder 2.

TUCK – VARIATION 3. Using 2 colours in Feeder 1.
*Knit 6 rows col. 1 in Feeder 1. Knit 6 rows col. 2 in Feeder 1.

CARD 222 TUCK – WEAVE – PUNCH-LACE – FAIRISLE

TUCK – VARIATION 1. Using 1 colour in Feeder 1 ONLY.
After pre-setting row 56 – 1 –
*Cam Lever T - knit 2 rows. Cam lever 0 - knit 2 rows.

TUCK – VARIATION 2. Using 2 colours in Feeder 1.
After pre-setting row 56 – 1 –
*Cam Lever T - col. 1 in Feeder 1 - Knit 2 rows.
Cam Lever 0 - col. 2 in Feeder 1 - Knit 2 rows.

WEAVING – After pre-setting row 56 – 1 –
*Knit 2 rows with weaving thread. Knit 2 rows without weaving thread.

FAIRISLE – After pre-setting row 56 – 1 –
*Knit 2 rows with BOTH colours.
Knit 2 rows colour 1 ONLY.

CARD 223 TUCK – SLIP

CARD 224 FAIRISLE

CARD 225 WEAVE – PUNCH-LACE – FAIRISLE

CARD 226 WEAVE – FAIRISLE

WEAVING – After pre-setting row 54 – 1 –
*Weave 6 rows, knit 2 rows without weaving thread.
Weave 8 rows, knit 2 rows without weaving thread.

FAIRISLE – After pre-setting row 54 – 1 –
*Knit 6 rows BOTH colours, knit 2 rows col. 1 ONLY.
Knit 8 rows BOTH colours, knit 2 rows col. 1 ONLY.

CARD 227 SLIP – WEAVE – FAIRISLE

SLIP – After pre-setting row 60 – 1 –
*Cam Lever S - knit 9 rows. Cam Lever 0 - knit 6 rows.

*WEAVE – After pre-setting row 60 – 1 –
 *Weave 9 rows, knit 6 rows without weaving thread.

FAIRISLE – After pre-setting row 60 – 1 –
 *Knit 9 rows BOTH colours, knit 6 rows colour 1 ONLY.

CARD 228 WEAVE – FAIRISLE

CARD 229 PUNCH-LACE – FAIRISLE

CARD 230 PUNCH-LACE – FAIRISLE

CARD 231 TUCK – WEAVE – FAIRISLE

TUCK - VARIATION 1. Using 2 colours in Feeder 1.
 After pre-setting row 48 – 1 –
 *Knit 2 rows col. 1 in Feeder 1. Knit 2 rows col. 2
 in Feeder 1.

CARD 232 TUCK – SLIP

TUCK - VARIATION 1. Using 2 colours in Feeder 1.
 After pre-setting row 60 – 1 –
 *Knit 2 rows col. 1 in Feeder 1. Knit 2 rows col. 2
 in Feeder 1.

CARD 233 WEAVE – PUNCH-LACE – FAIRISLE

CARD 234 TUCK

TUCK - VARIATION 1 – using 1 colour.
 After pre-setting row 60 – 1 – card release to
 *Cam Lever T – knit 2 rows. Cam Lever 0 – Knit 1 row

TUCK VARIATION 2 – Using 2 colours in Feeder 1.
 After pre-setting row 60 – 1
 *Knit 2 rows col. 1 in Feeder 1. Knit 2 rows colour 2
 in Feeder

CARD 235 WEAVE – PUNCH-LACE – FAIRISLE

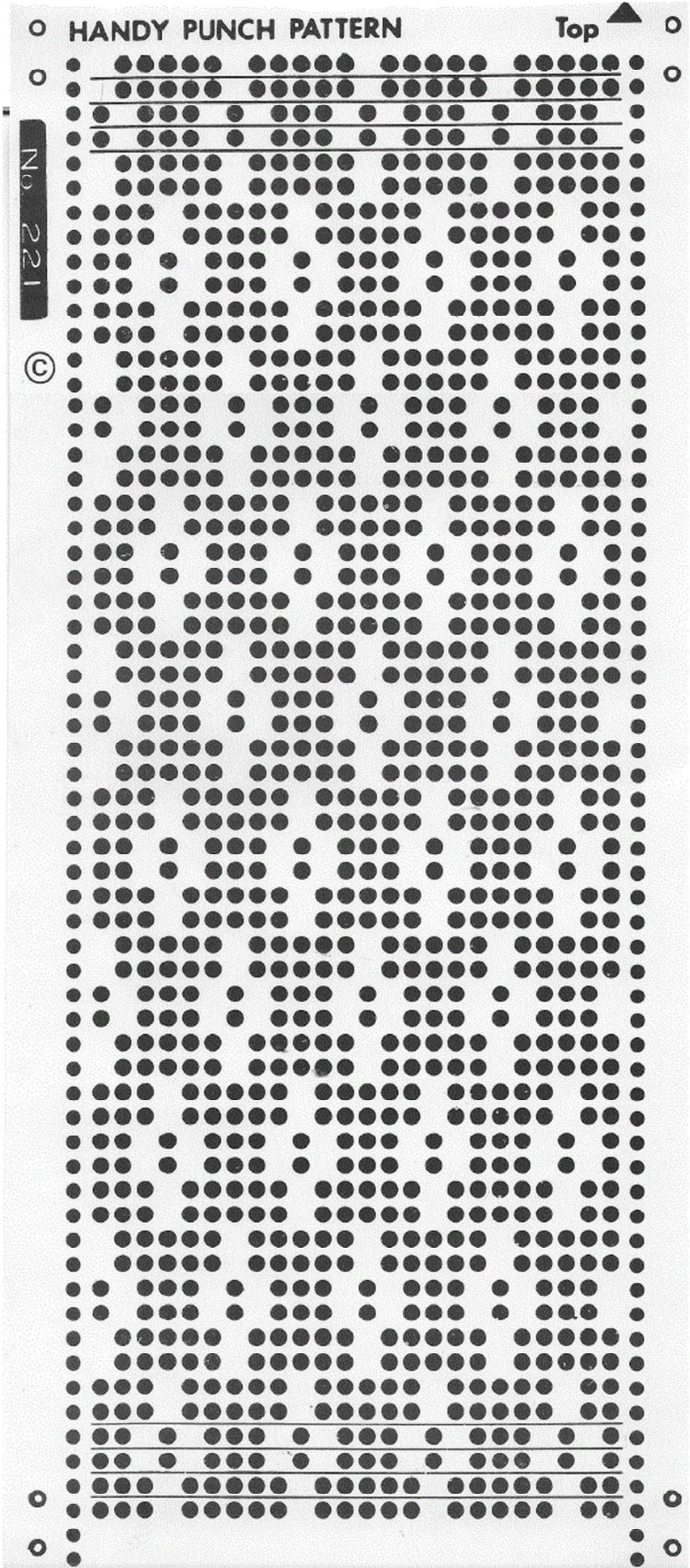
CARD 236 WEAVE – PUNCH-LACE – FAIRISLE

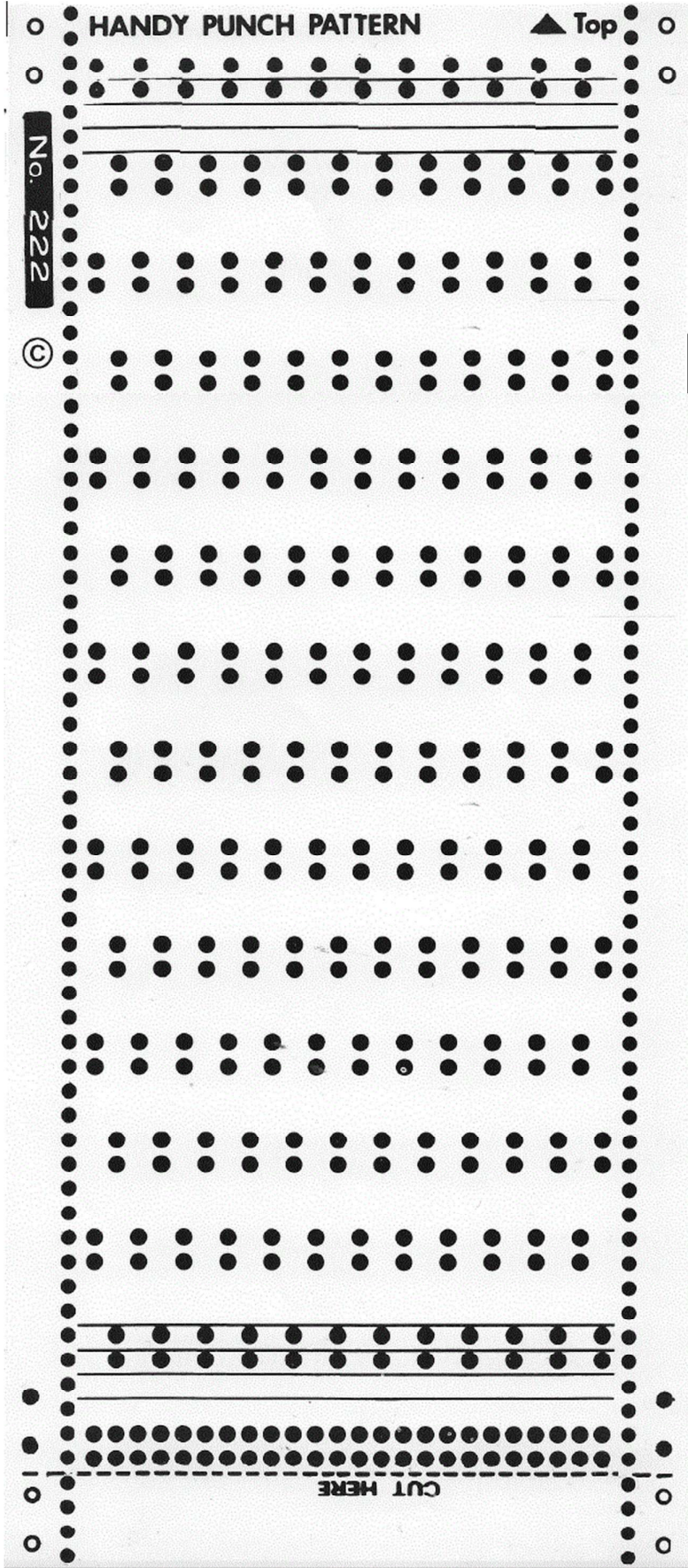
CARD 237 FAIRISLE

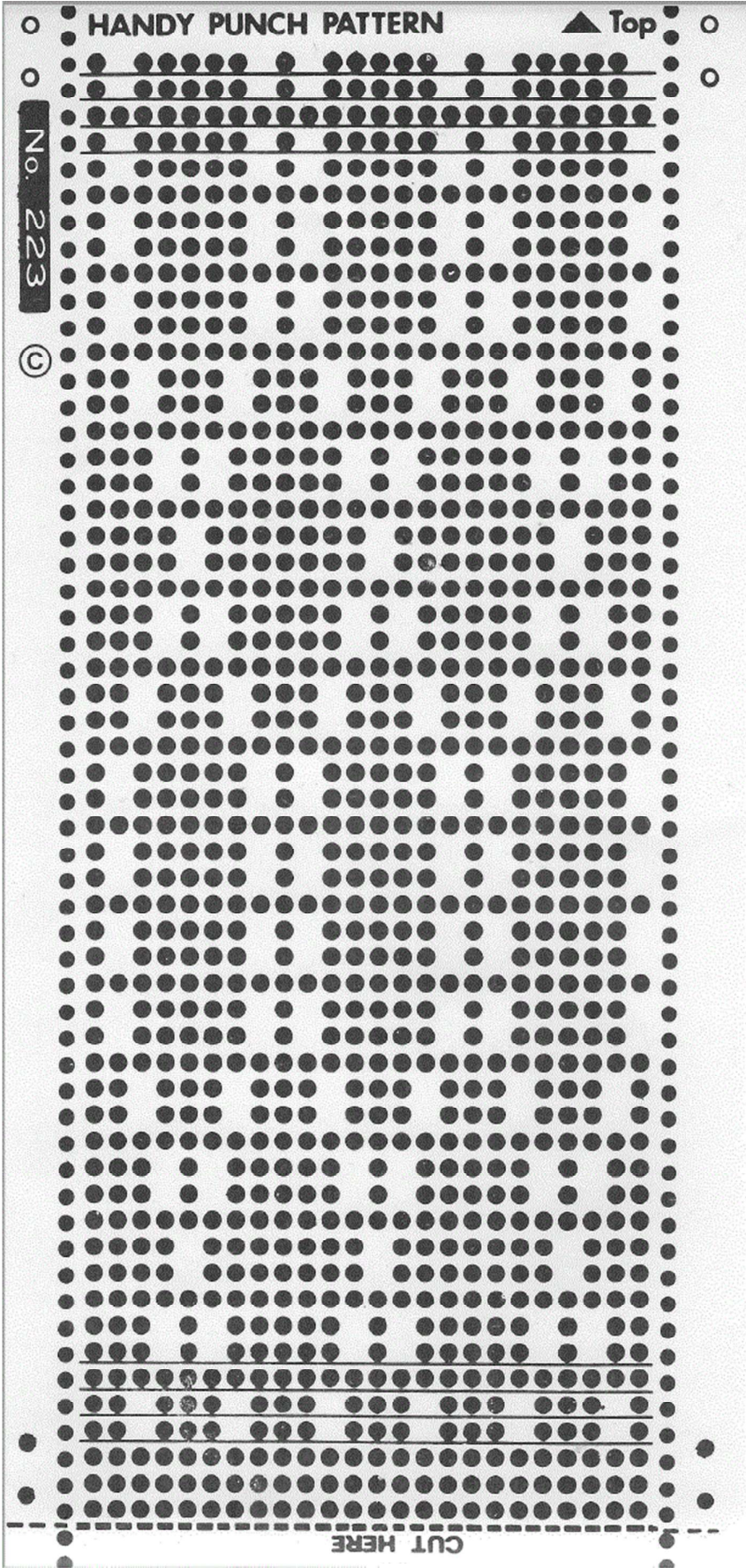
CARD 238 FAIRISLE

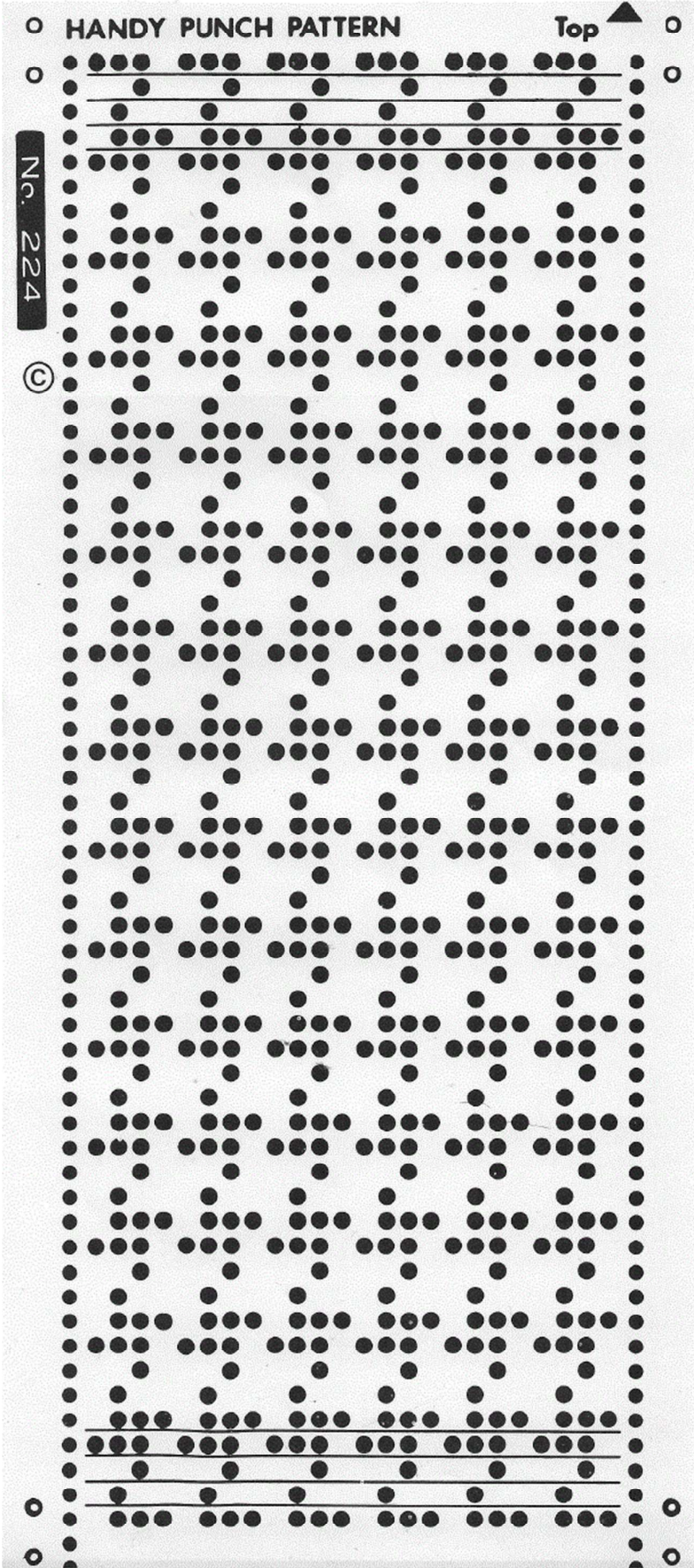
CARD 239 FAIRISLE

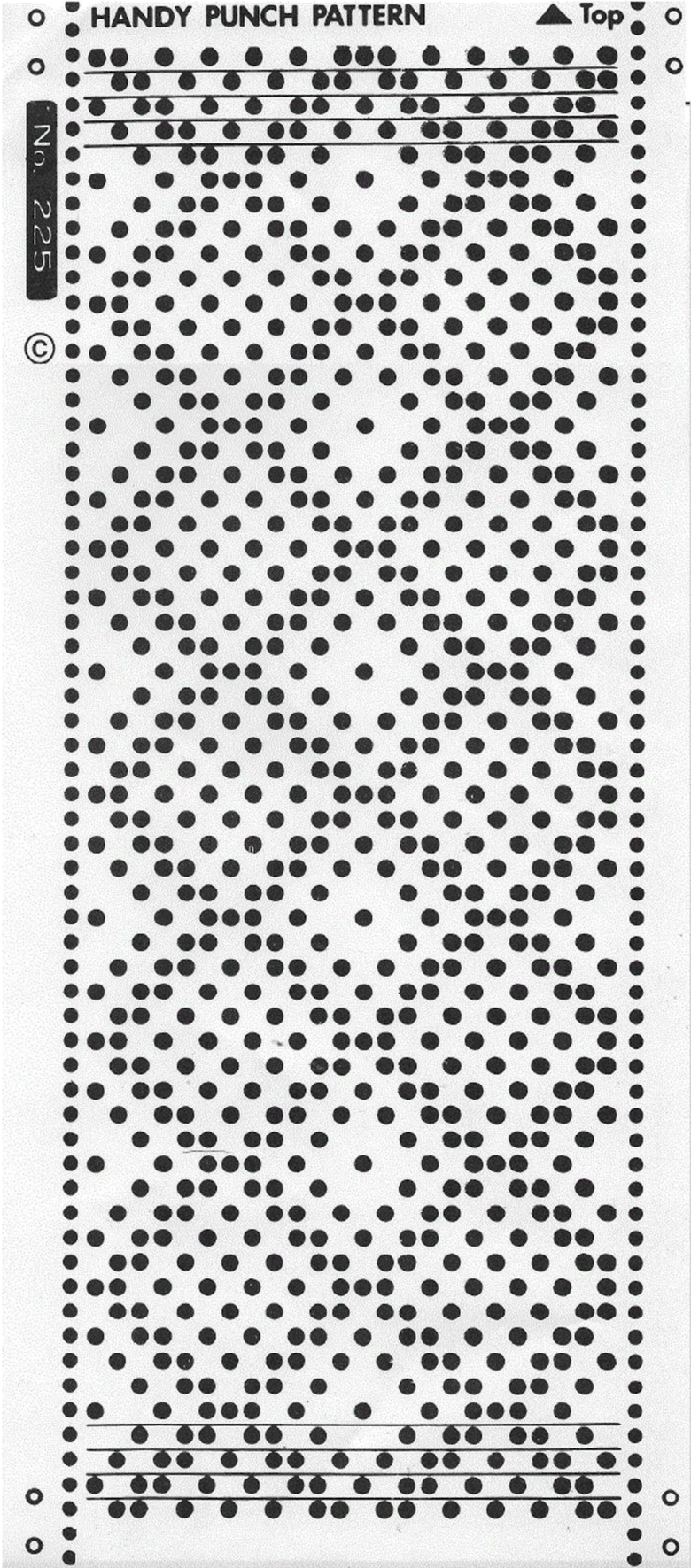
CARD 240 FAIRISLE – PUNCH-LACE

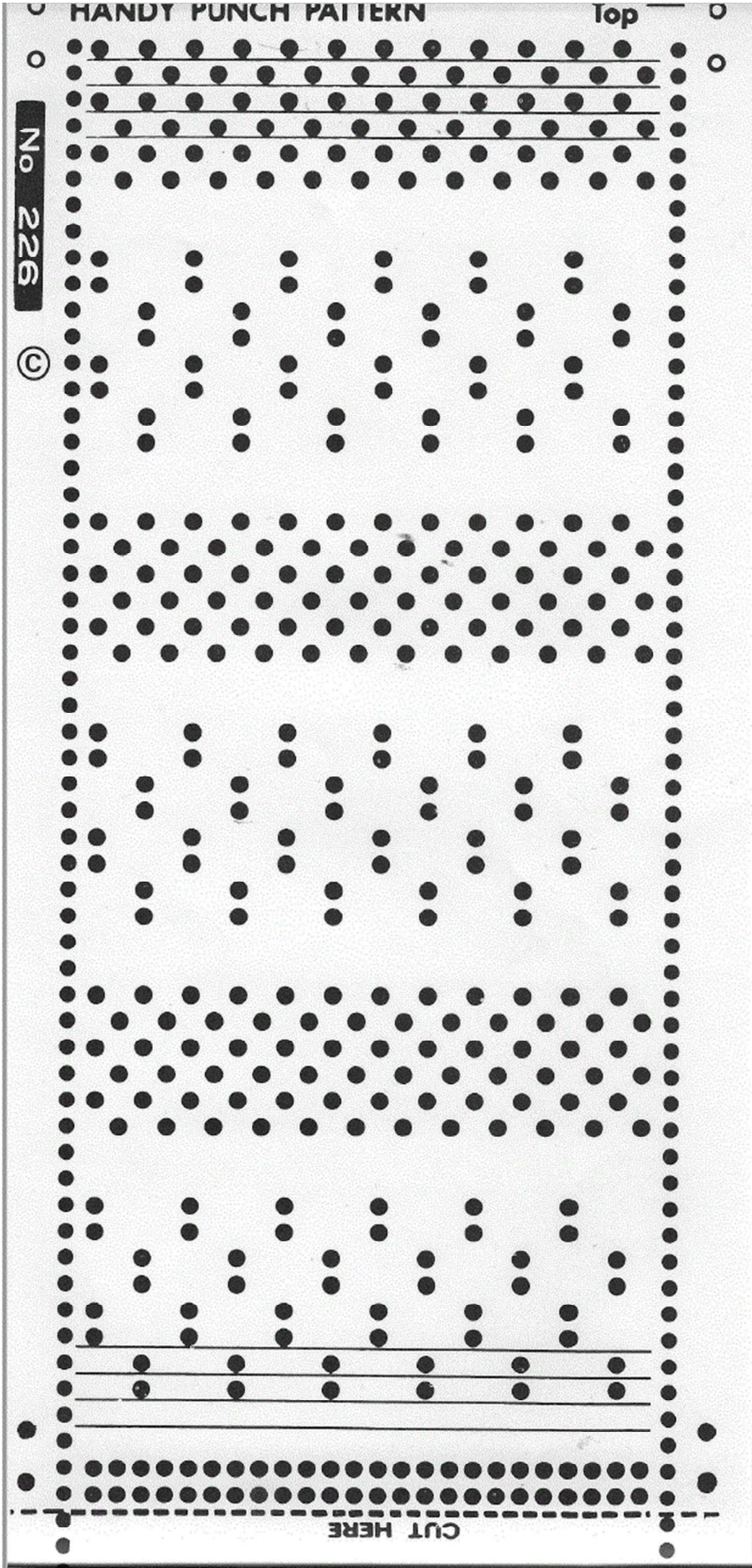


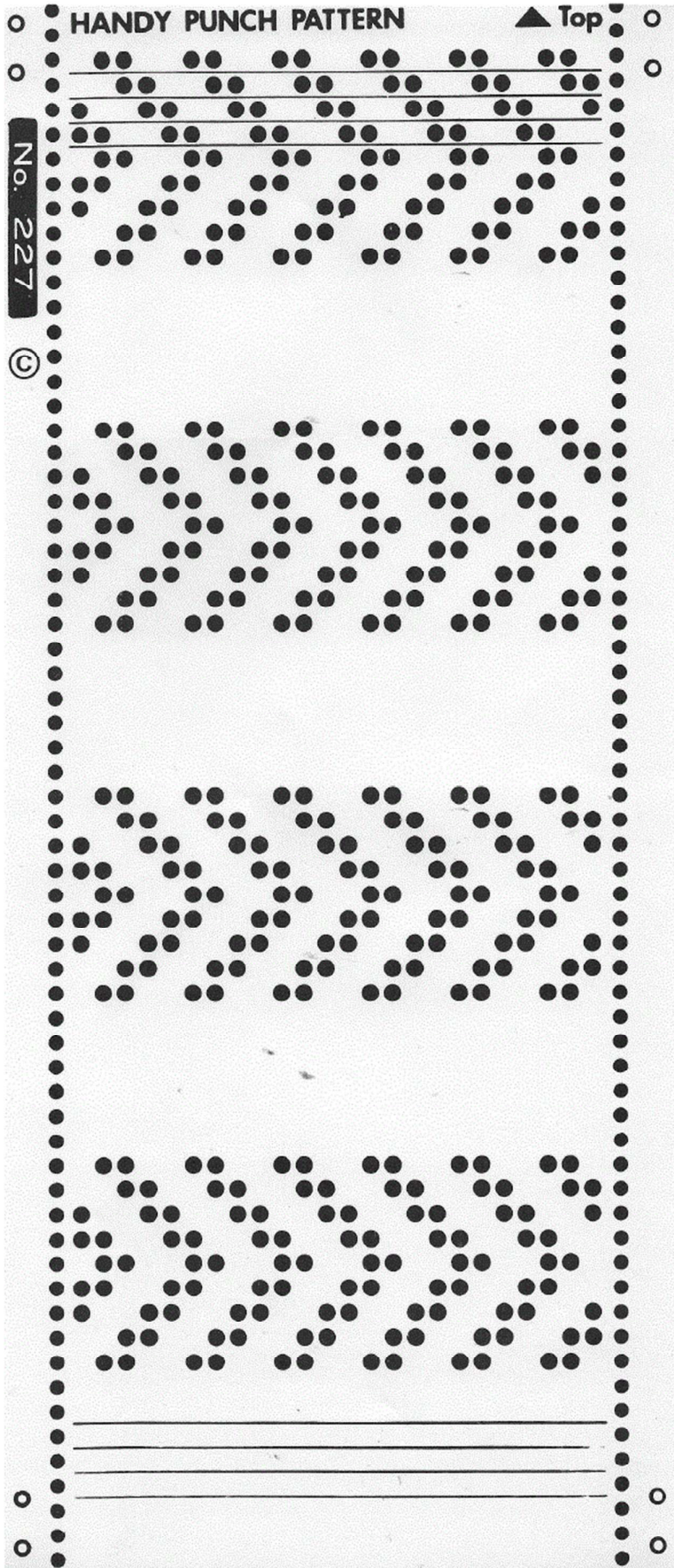


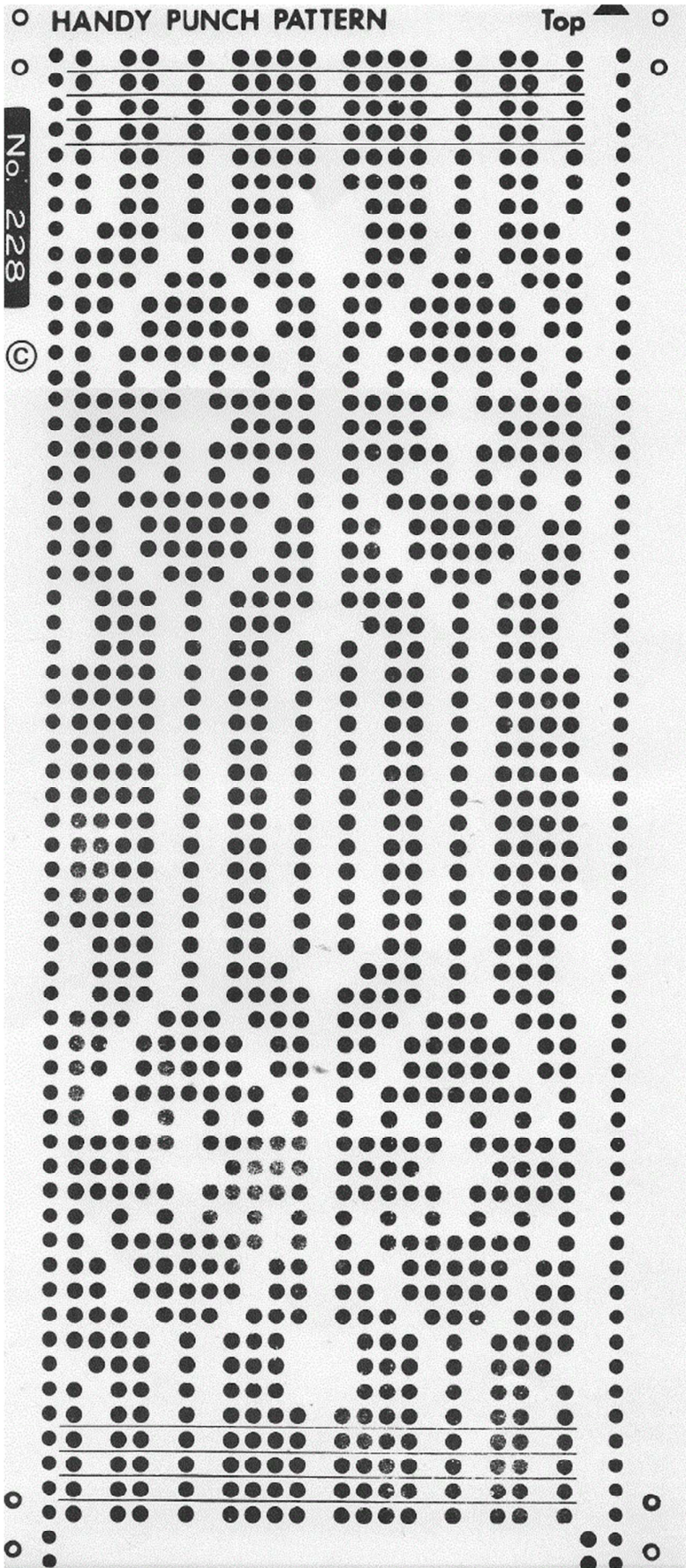


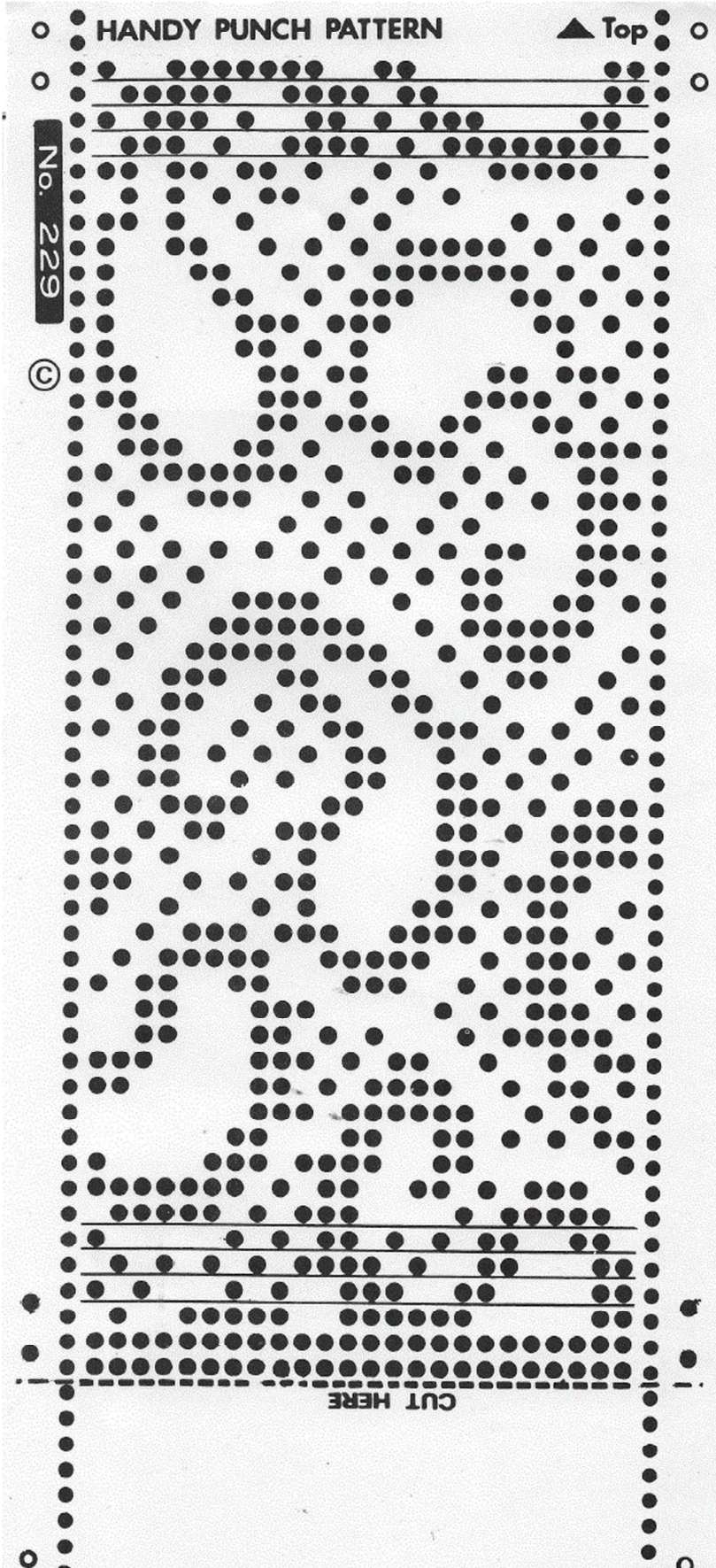


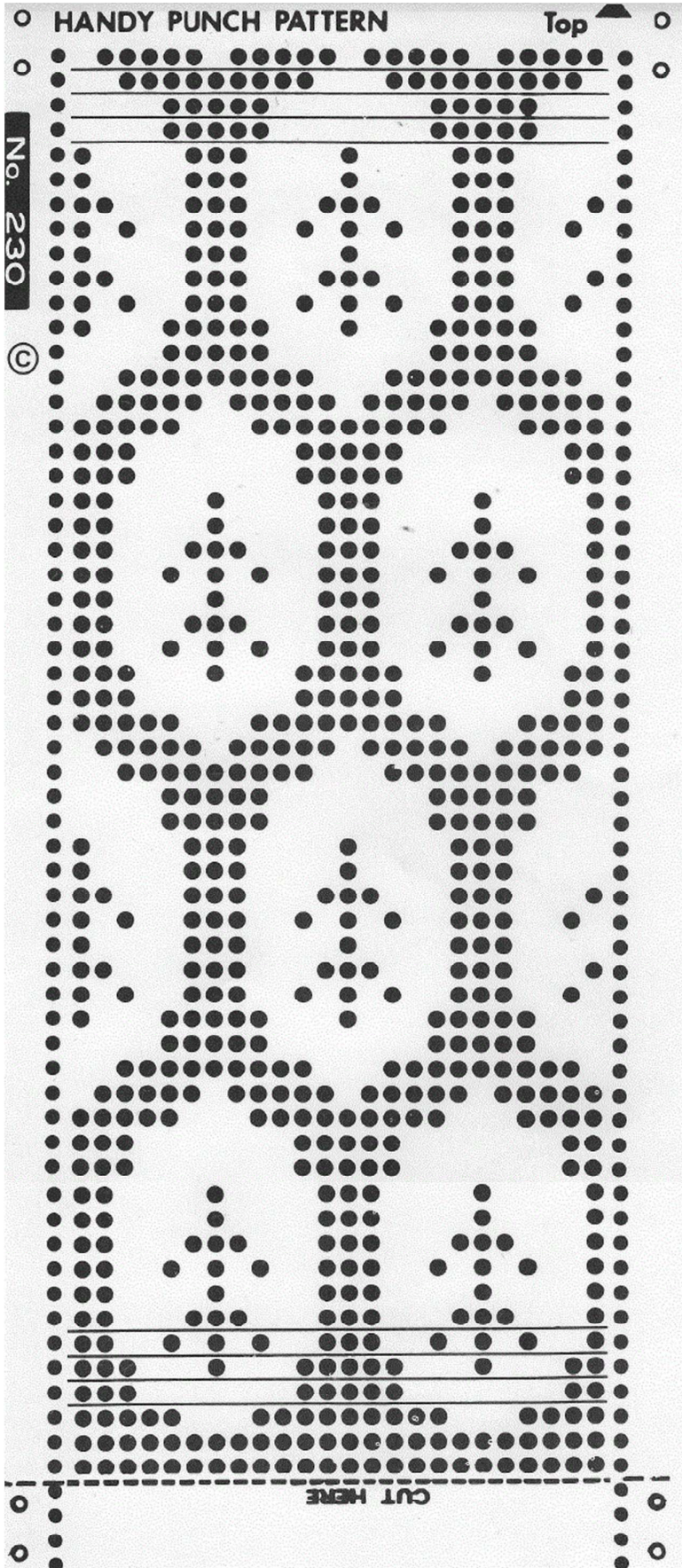


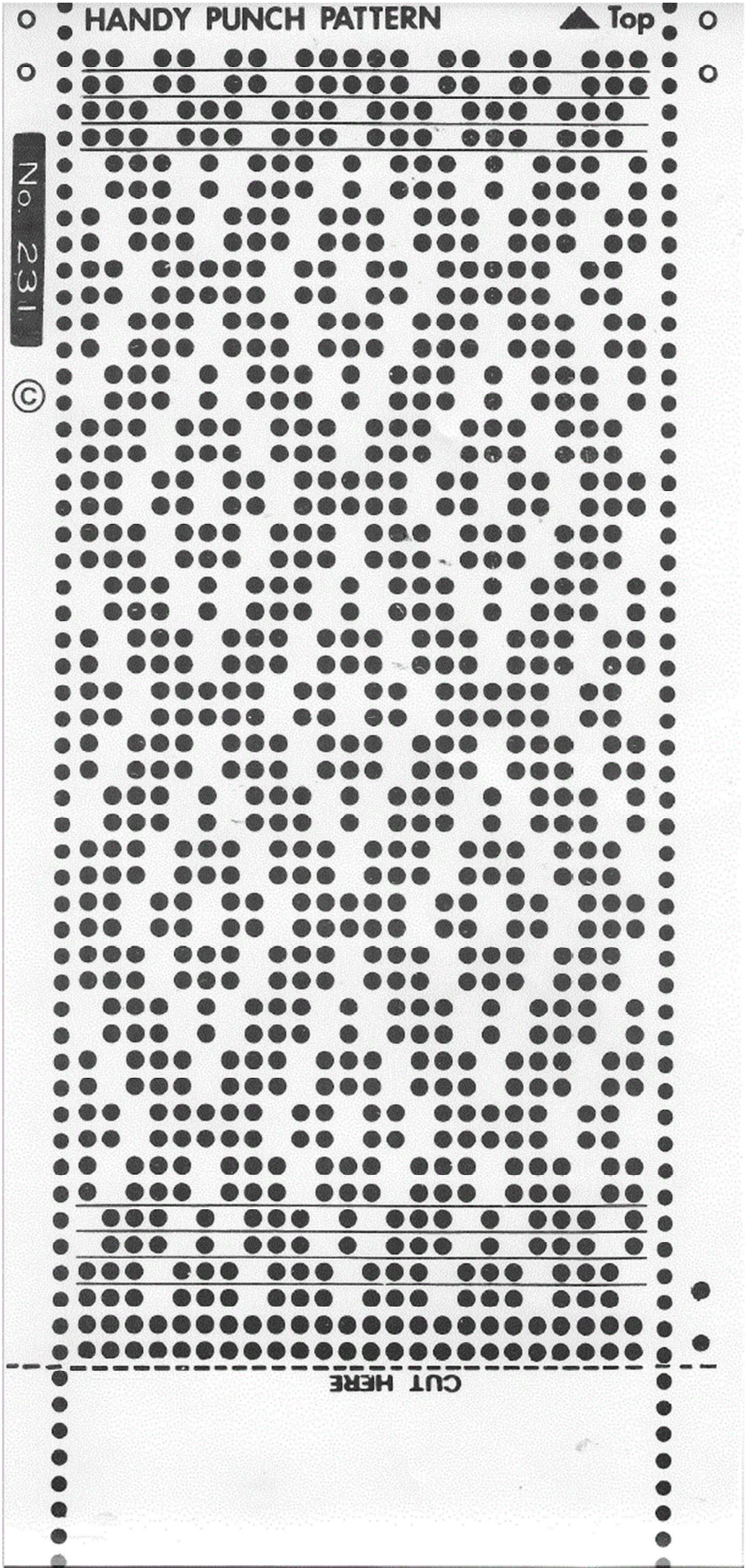


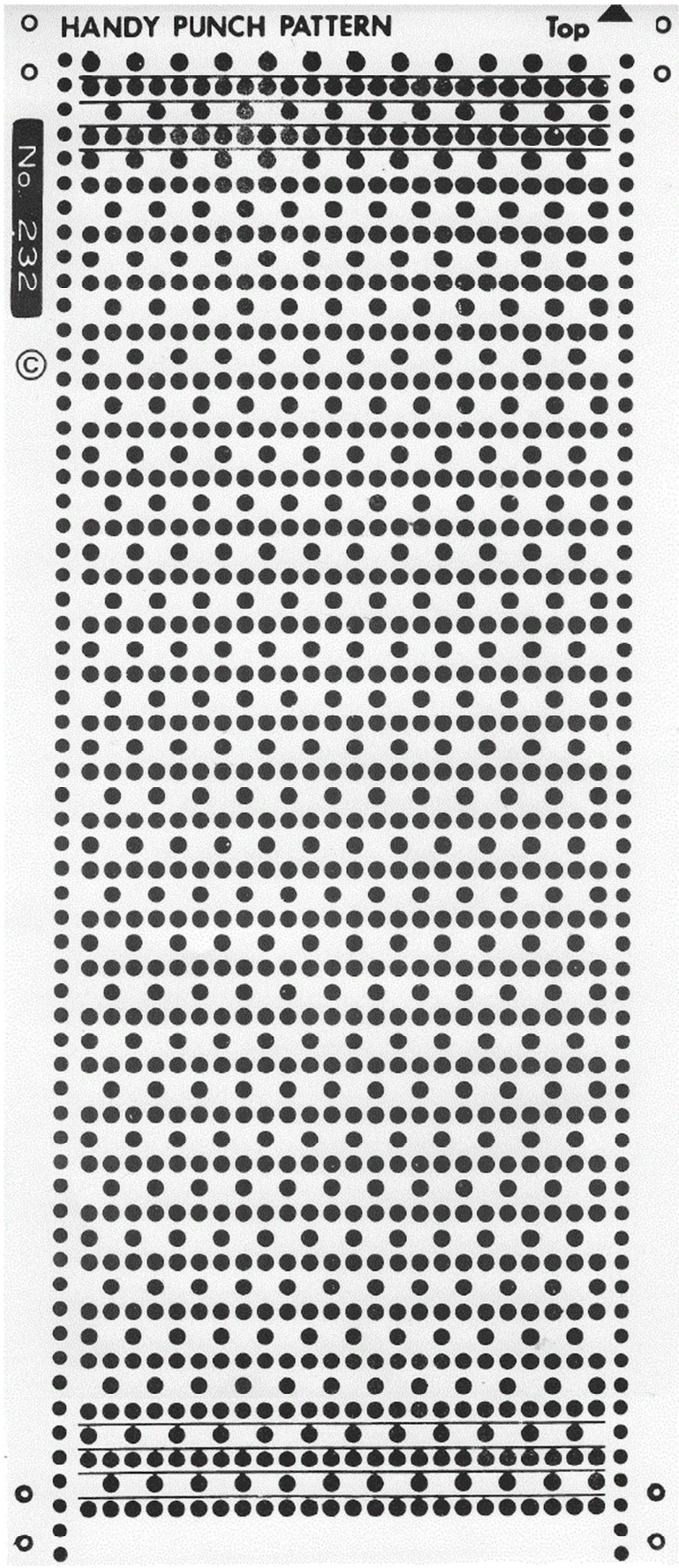


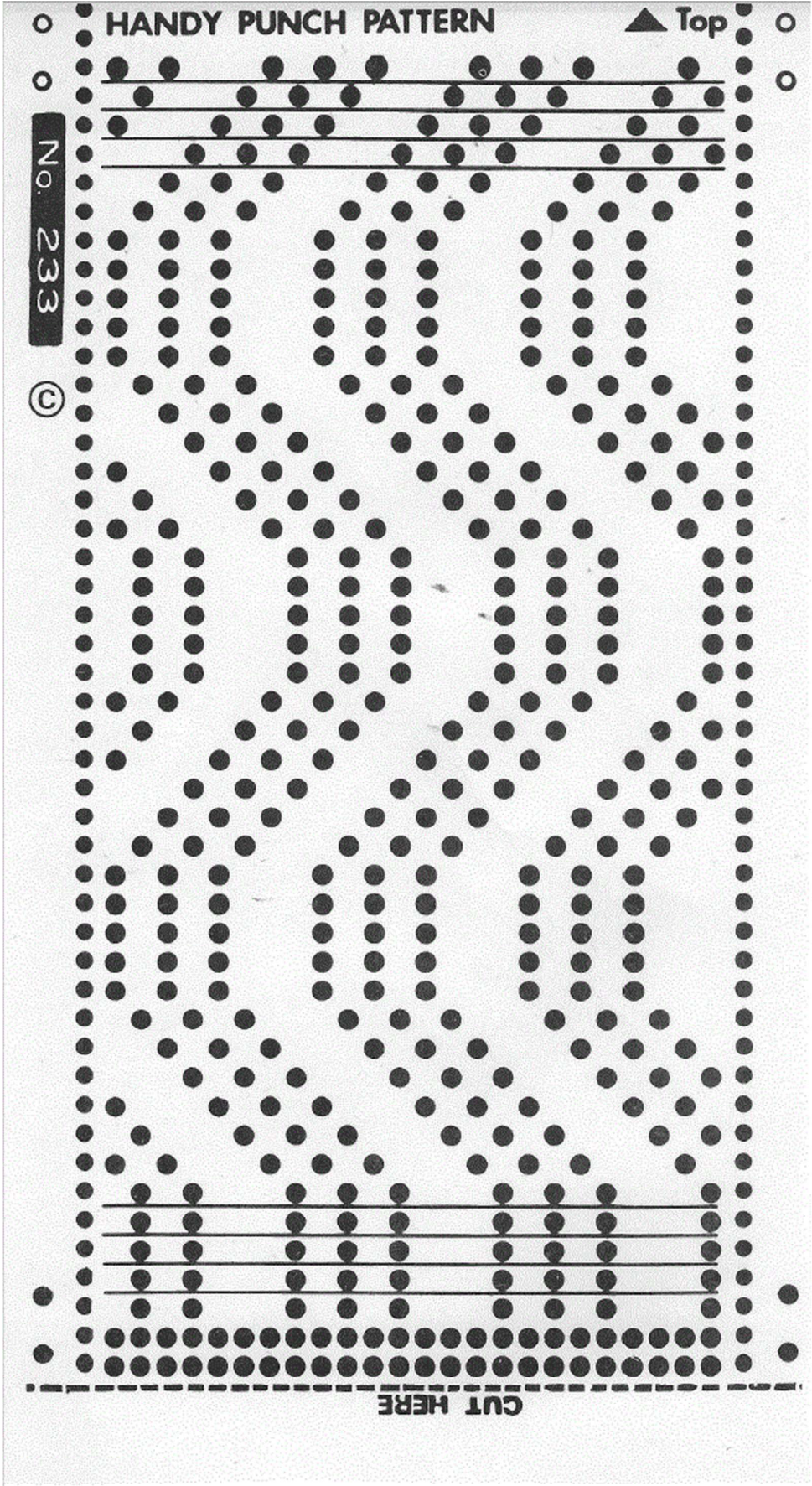












○ HANDY PUNCH PATTERN Top ▲ ○

