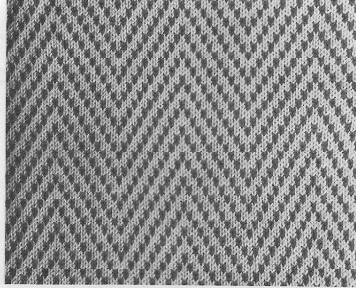


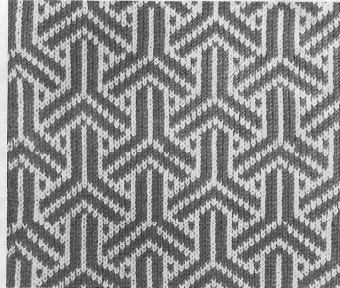
**HANDY PUNCH** ©COPYRIGHT  
**PATTERN SET 55-56**

THESE PATTERNS ARE SUITABLE  
FOR USE WITH KNITMASTER PUNCHCARD  
MACHINES MODELS 313 321 323 325.

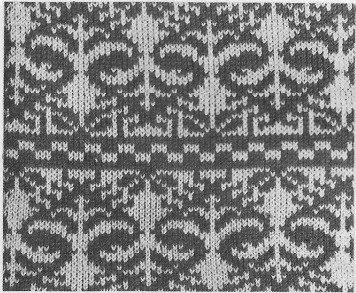
*Empire*  
**Knitmaster**



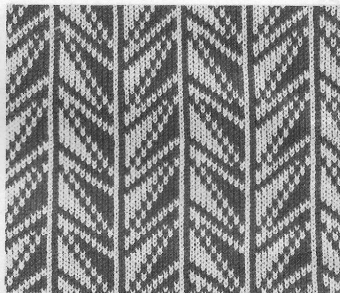
261



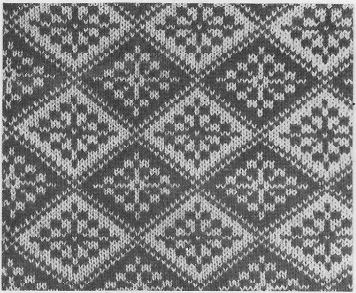
262



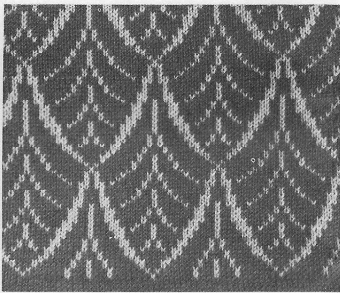
263



264



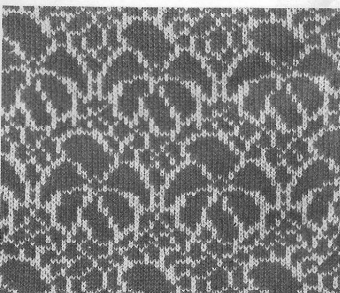
265



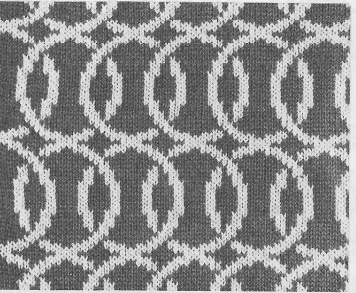
266



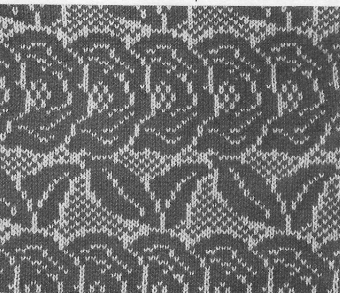
267



268



269

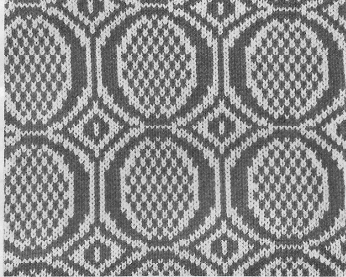


270

**HANDY PUNCH** ©COPYRIGHT  
**PATTERN SET 55-56**

THESE PATTERNS ARE SUITABLE  
FOR USE WITH KNITMASTER PUNCHCAHD  
MACHINES MODELS 313 321 323 325.

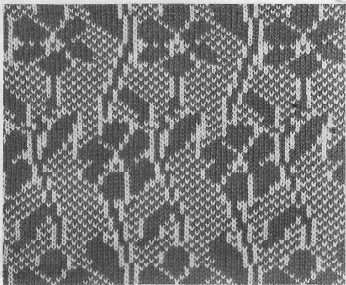
*Empisal*  
**Knitmaster**



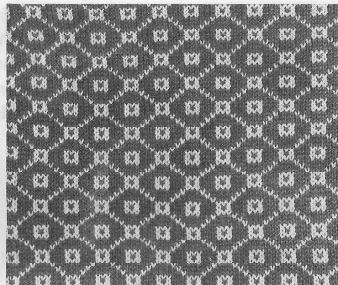
271



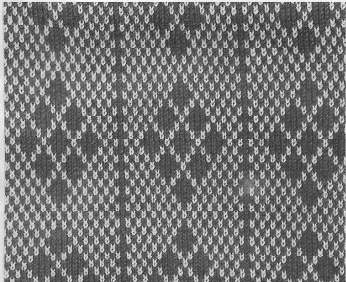
272



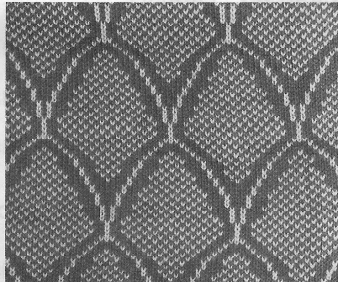
273



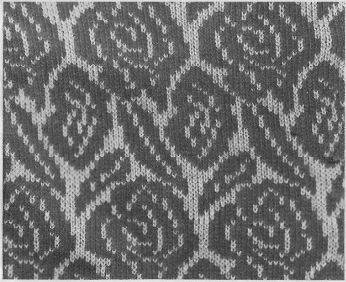
274



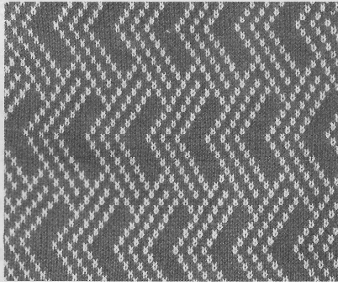
275



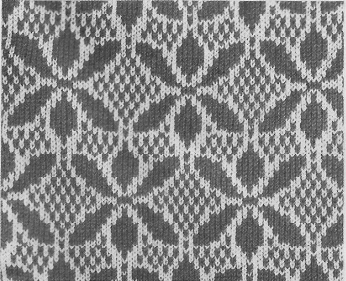
276



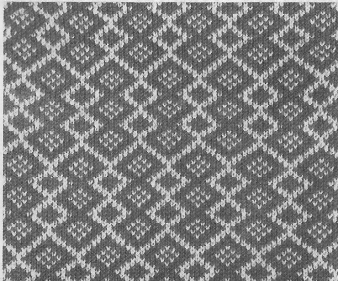
277



278



279



280

**INSTRUCTIONS FOR YOUR PUNCHCARDS – VARIATIONS**

**SERIES 55/56**

**CARD 261 TUCK – SLIP – WEAVE – FAIRISLE**

**TUCK VARIATION 1 - Using 2 colours in Feeder 1.**

After pre-setting row 48-1-

\* Knit 2 rows col. 1 in Feeder 1.

Knit 2 rows col. 2 in Feeder 1.

**CARD 262 WEAVE – PUNCH-LACE – FAIRISLE**

**CARD 263 FAIRISLE – Knit row 5 –6 –41– 42 col. 1 ONLY.**

**FAIRISLE VARIATION 1- After pre-setting row 1-2-**

Card release – Knit 5 rows.

\* Turn card to 3– card release – knit 6 rows.

Turn card to 2– card release – knit 6 rows.

**CARD 264 WEAVE – FAIRISLE**

**CARD 265 PUNCH – FAIRISLE**

**CARD 266 PUNCH-LACE – FAIRISLE**

**CARD 267 FAIRISLE**

**CARD 268 PUNCH-LACE – FAIRISLE**

**CARD 269 PUNCH-LACE – FAIRISLE**

**CARD 270 PUNCH-LACE – FAIRISLE**

**CARD 271 WEAVE – PUNCH-LACE – FAIRISLE**

**CARD 272 PUNCH LACE – FAIRISLE**

**CARD 273 WEAVE – PUNCH-LACE – FAIRISLE**

**CARD 274 PUNCH-LACE – FAIRISLE**

**CARD 275 WEAVE – PUNCH-LACE – FAIRISLE**

**CARD 276 WEAVE – PUNCH-LACE – FAIRISLE**

**CARD 277 PUNCH LACE – FAIRISLE**

**CARD 278 PUNCH LACE – FAIRISLE**

**CARD 279 PUNCH-LACE – FAIRISLE**

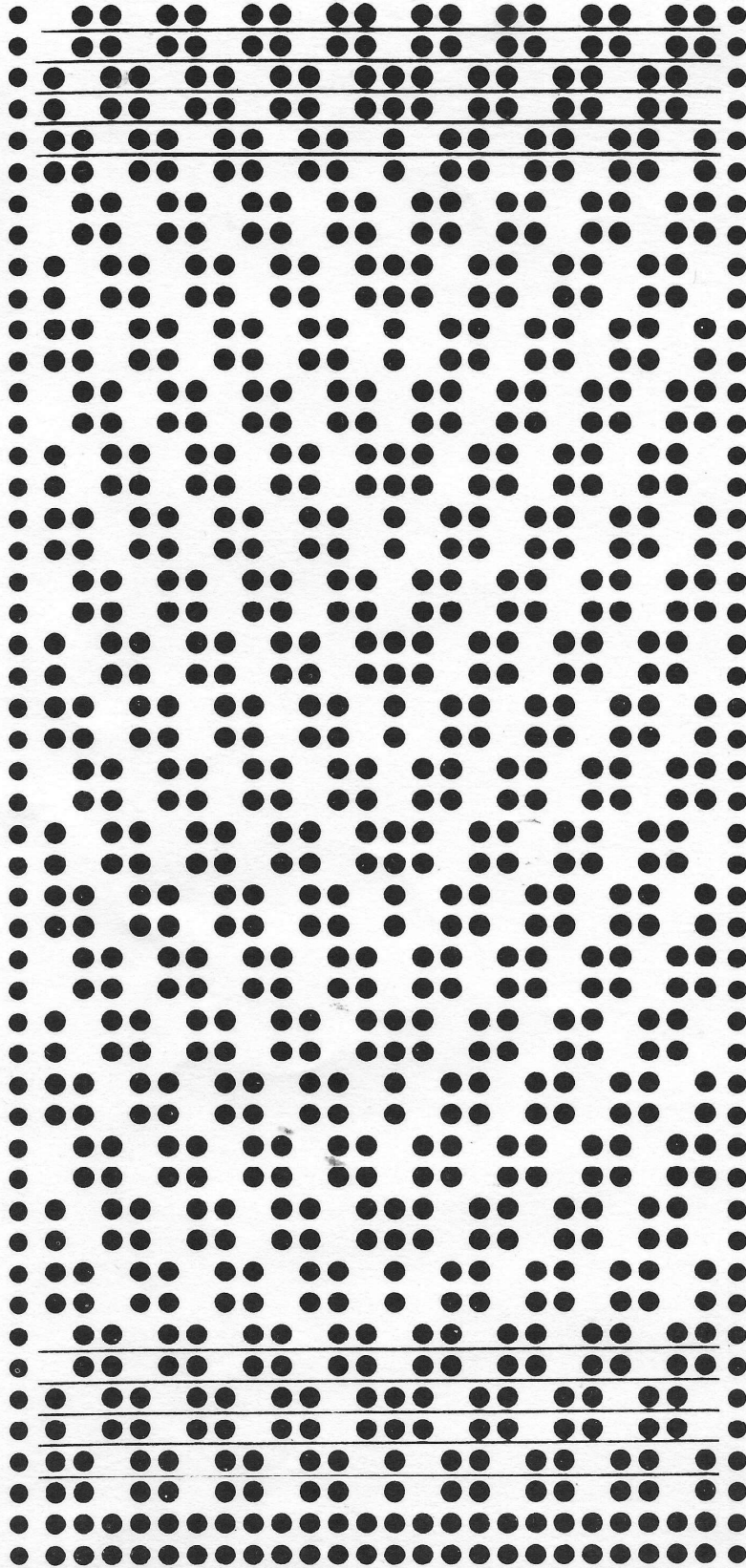
**CARD 280 WEAVE – PUNCH-LACE – FAIRISLE**

HANDY PUNCH PATTERN

Top ▲

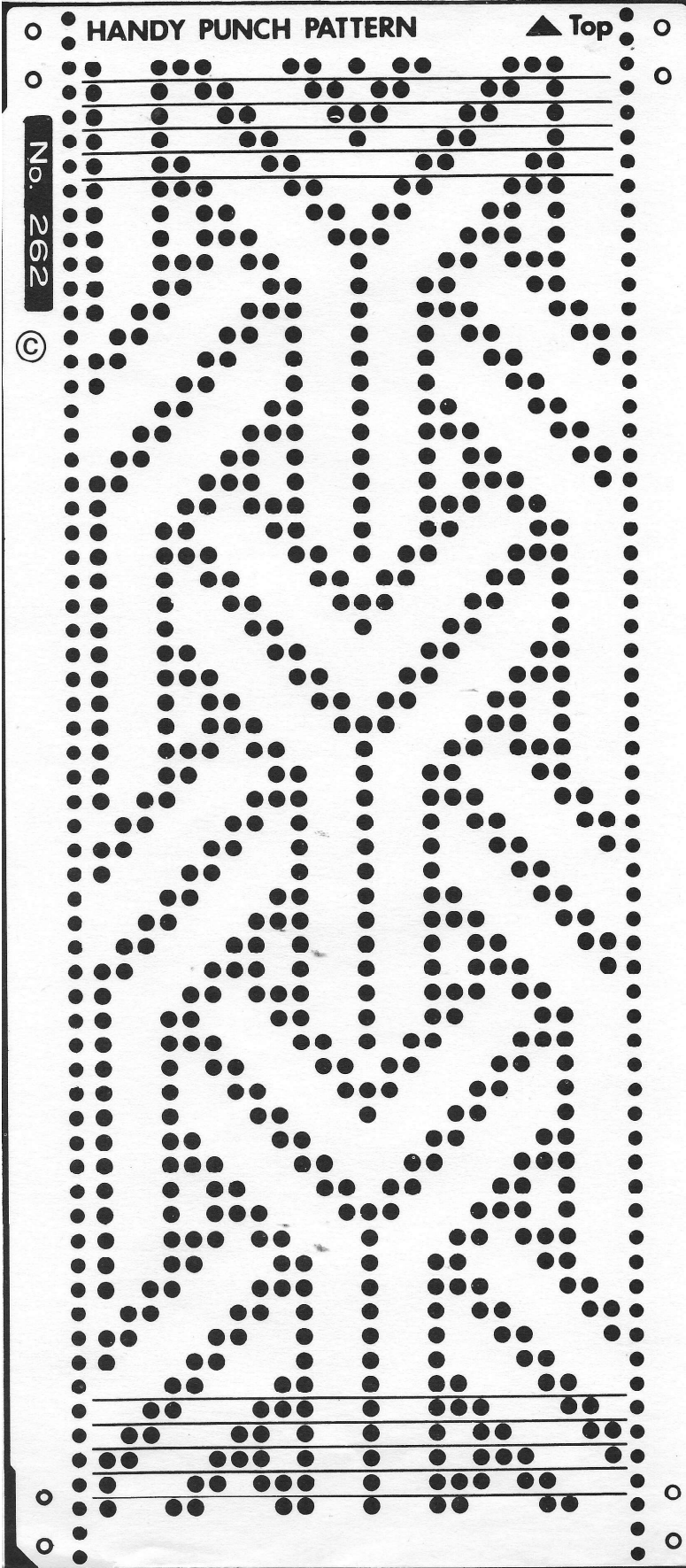
No. 261

©



CUT HERE

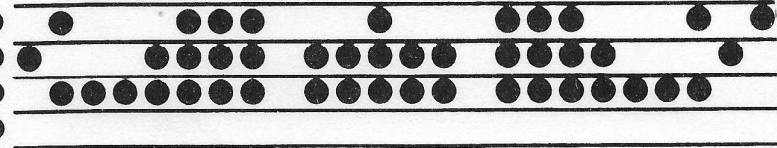
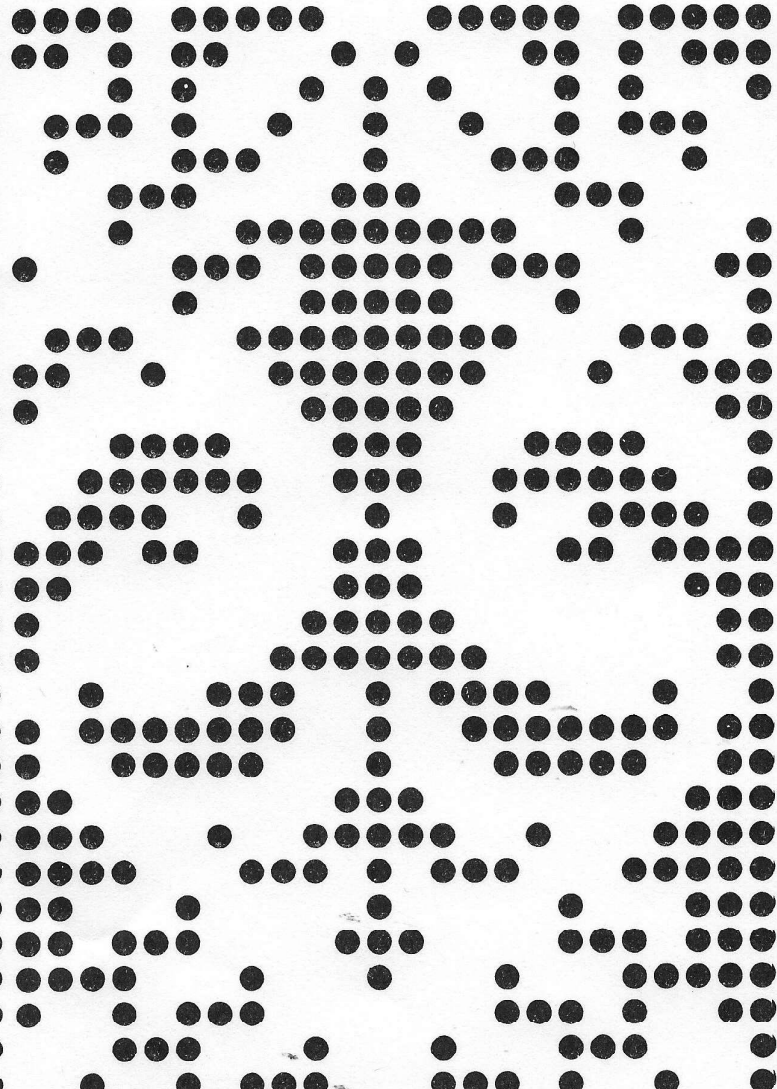
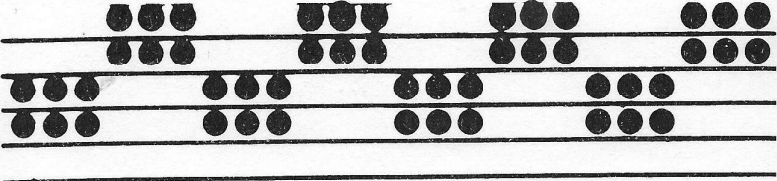




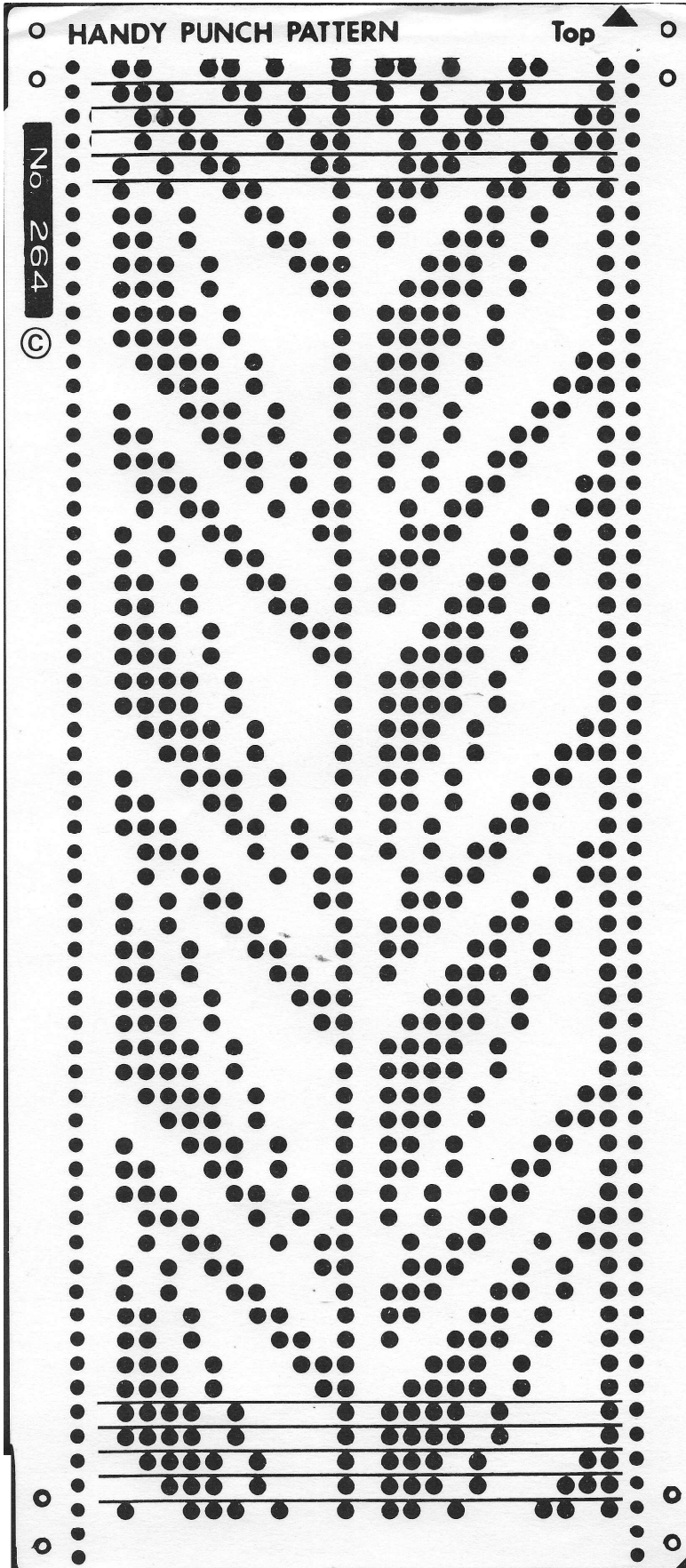
HANDY PUNCH PATTERN

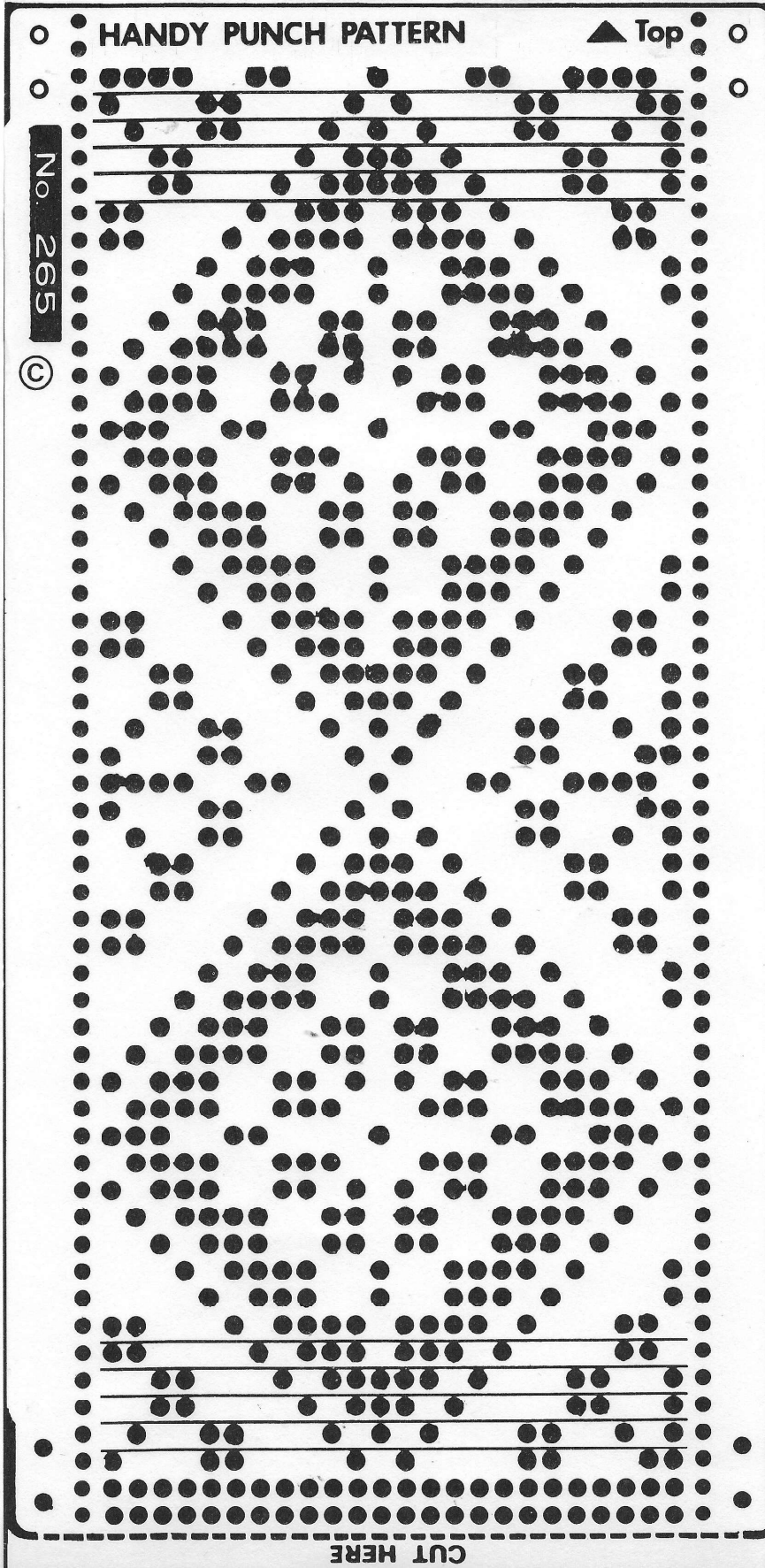
▲ Top

No. 263

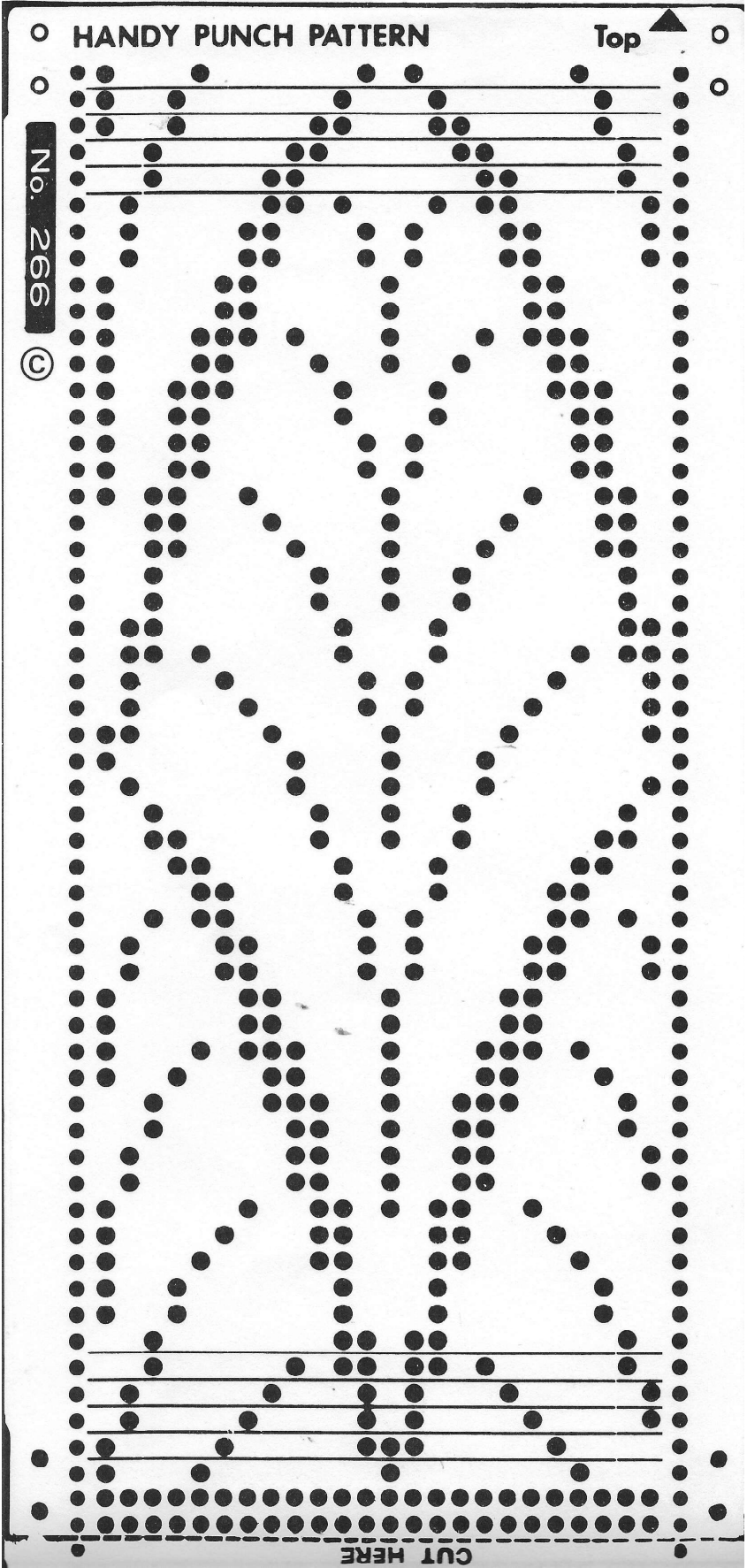


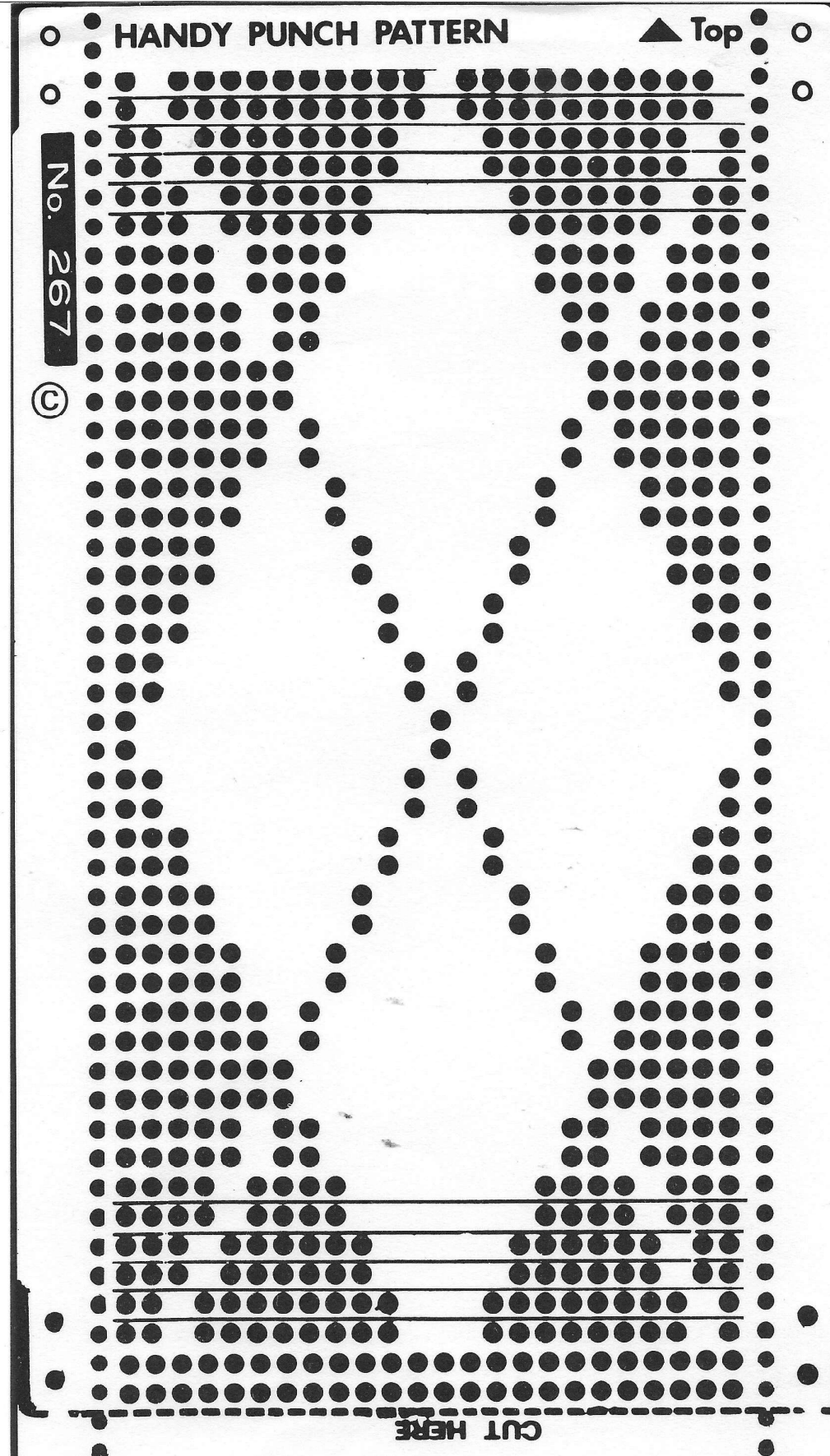
CUT HERE

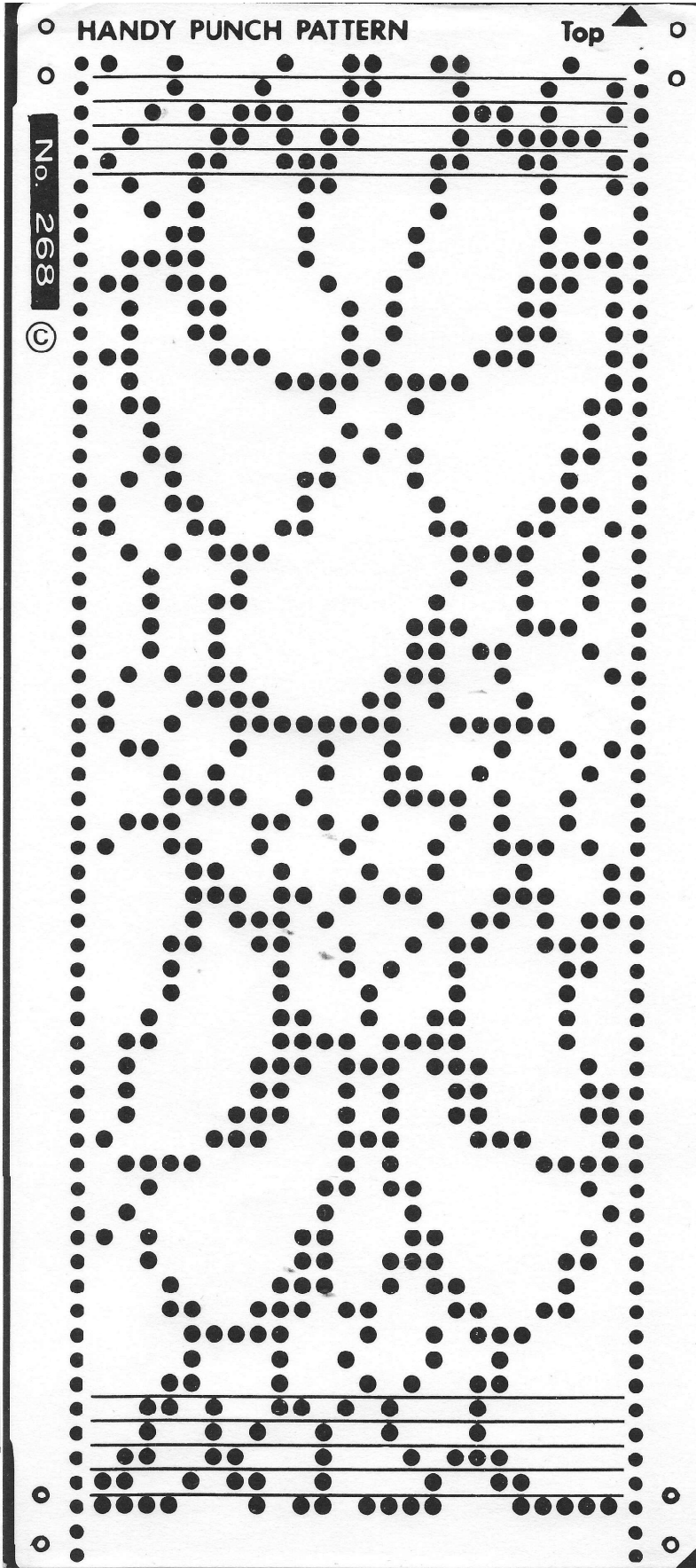


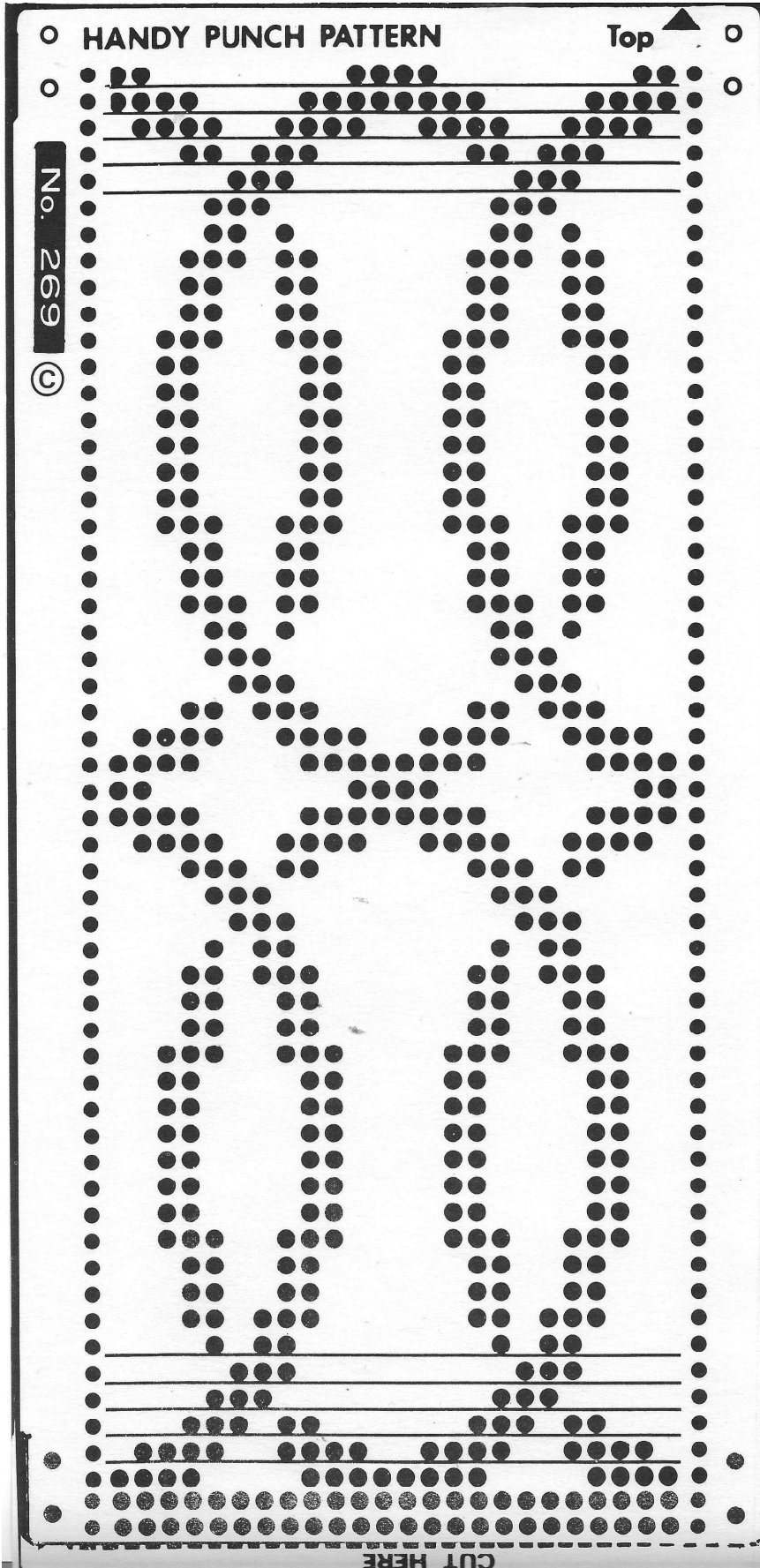




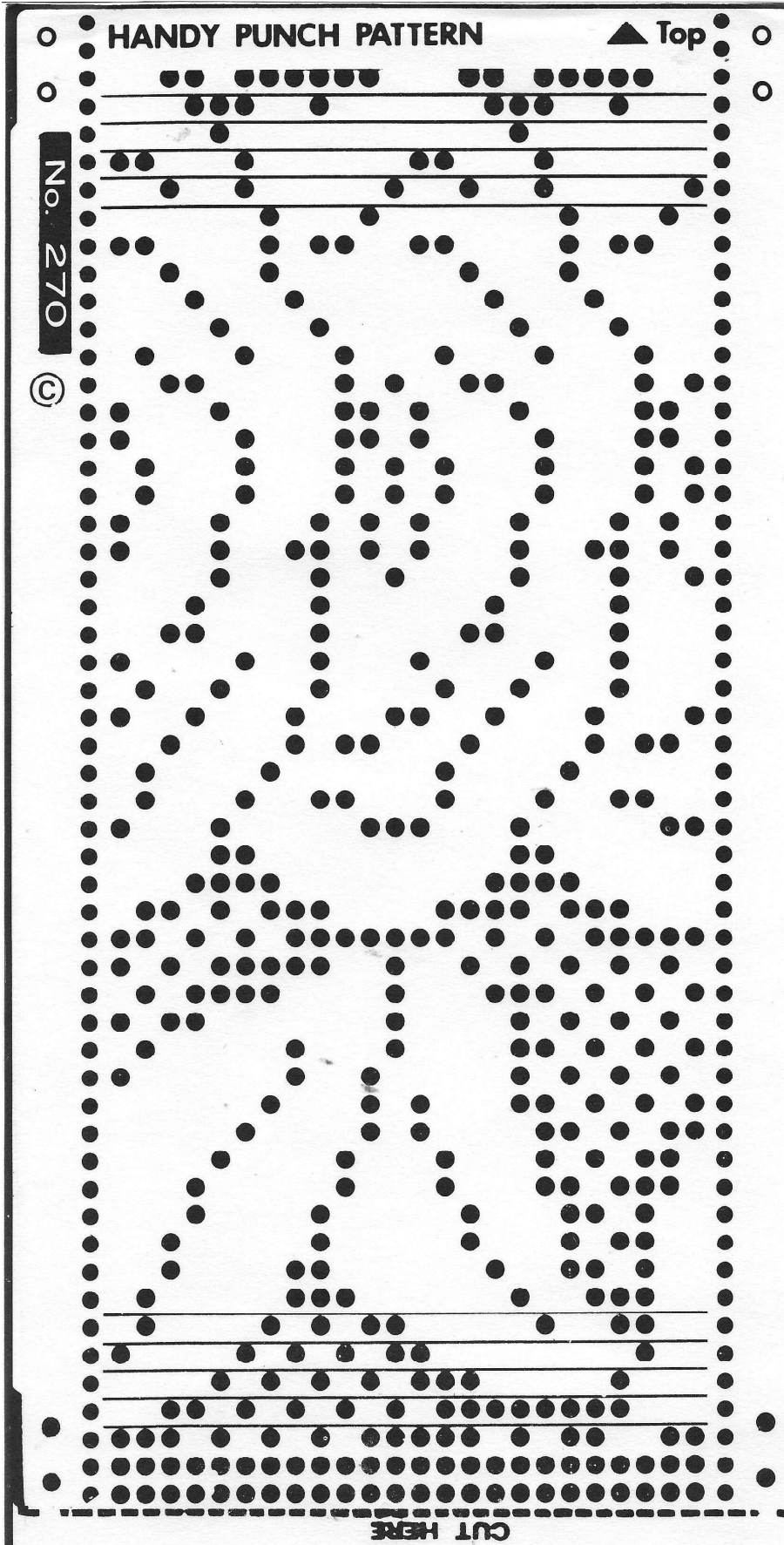


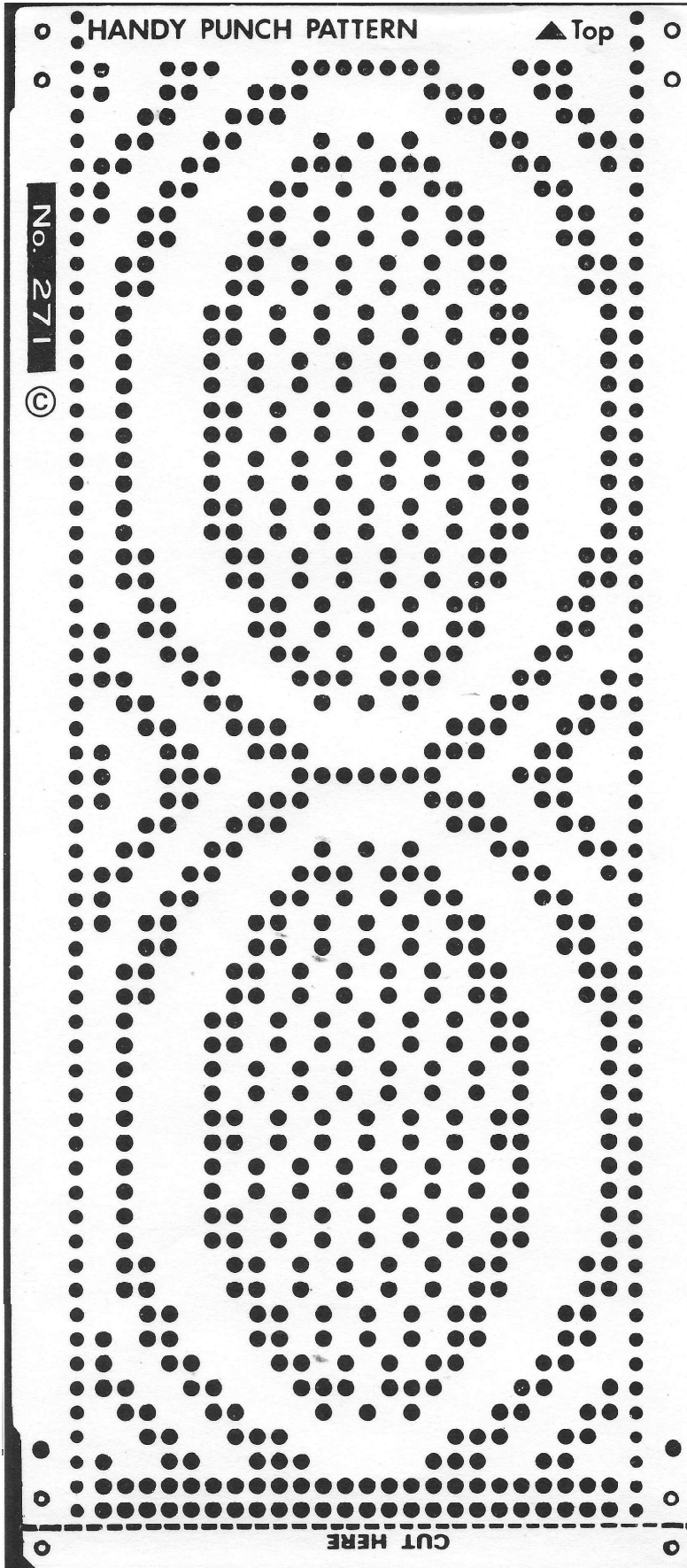










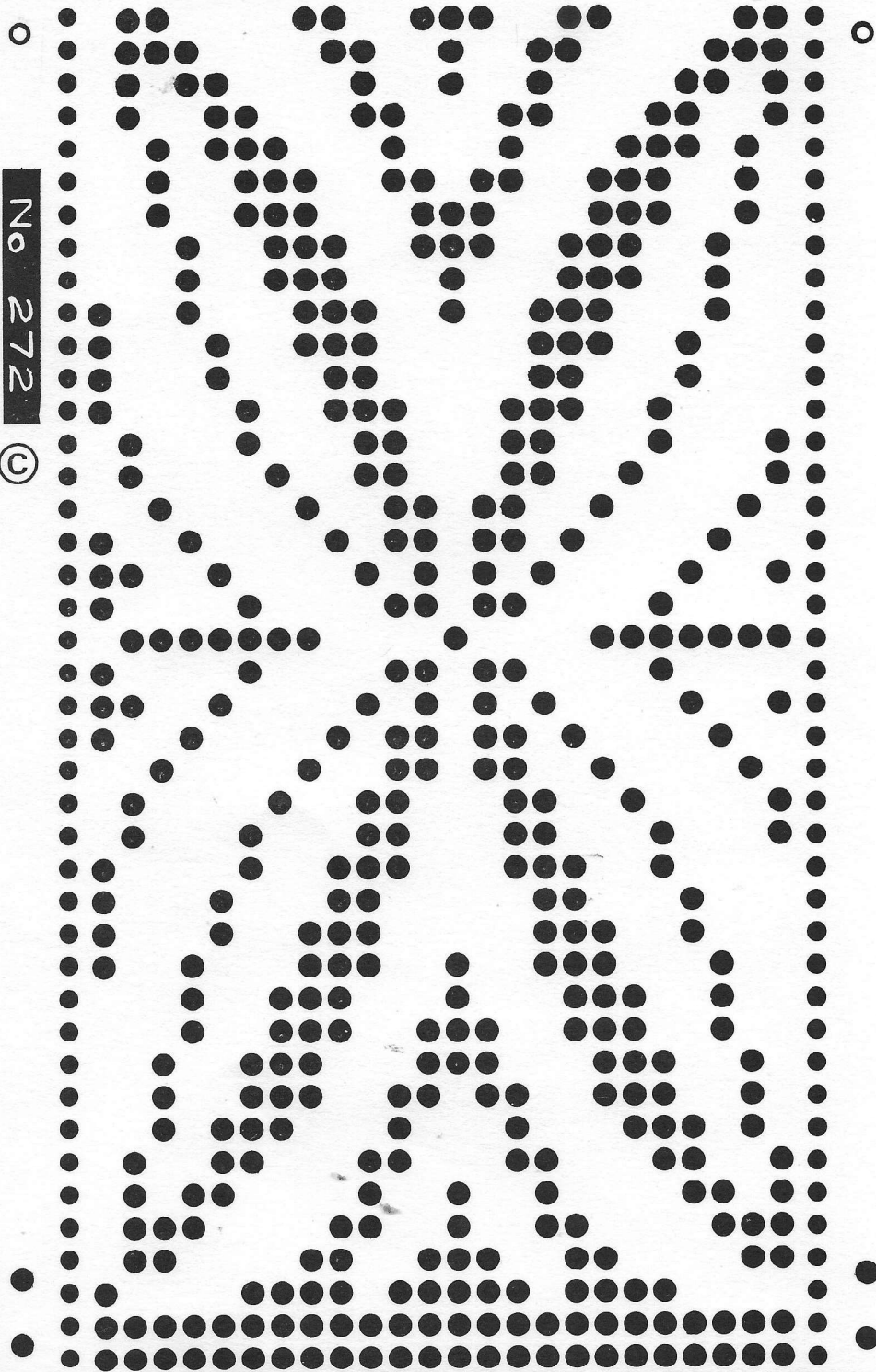


○ HANDY PUNCH PATTERN ○

Top ▲

No 272

©



CUT HERE

