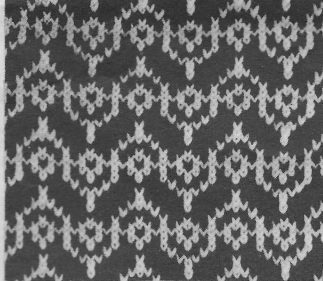


HANDY PUNCH ©COPYRIGHT
PATTERN SET M1010

THESE PATTERNS ARE SUITABLE
FOR USE WITH KNITMASTER PUNCHCARD
MACHINES MODELS 313 321 323 325.

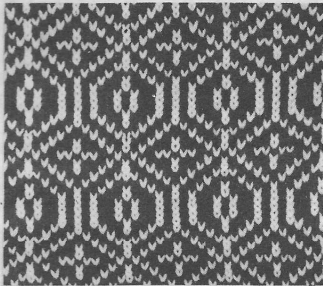
Empisal
Knitmaster



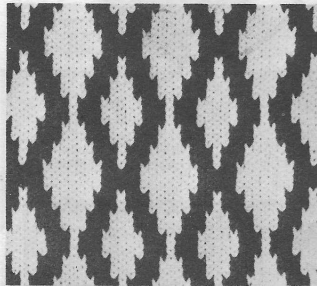
M 117 D



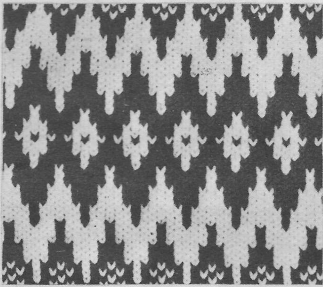
M 170 B



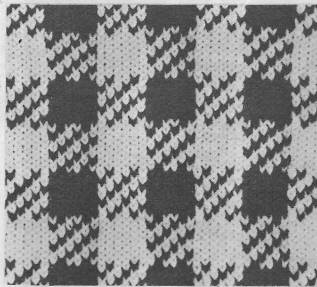
236 B



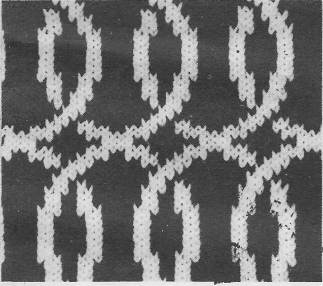
237 B



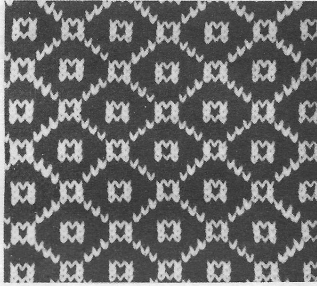
247 B



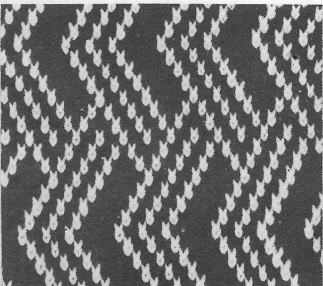
249 B



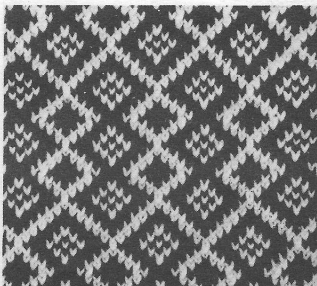
269 B



274 B



278 B



280 B

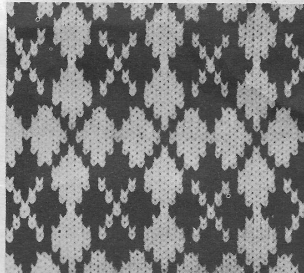
HANDY PUNCH ©COPYRIGHT
PATTERN SET M1010

THESE PATTERNS ARE SUITABLE
FOR USE WITH KNITMASTER PUNCHCARD
MACHINES MODELS 313 321 323 325.

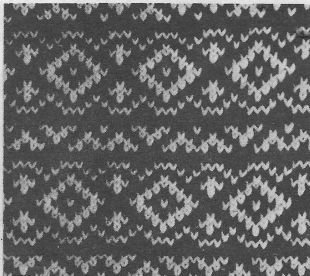
Empire
Knitmaster



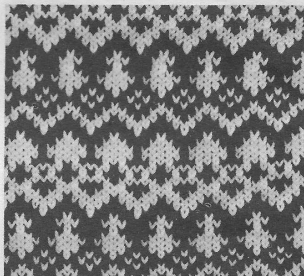
M 27 B



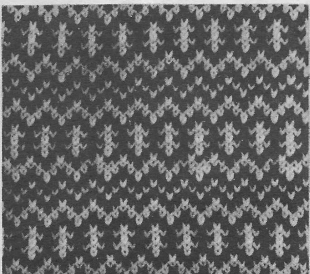
M 30 B



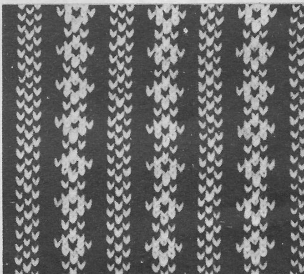
M 33 B



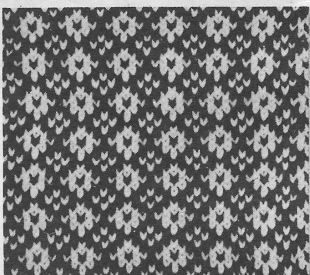
M 34 B



M 38 B



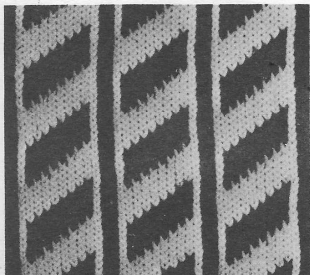
M 39 B



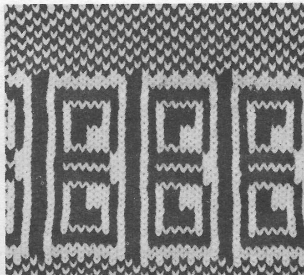
M 40 B



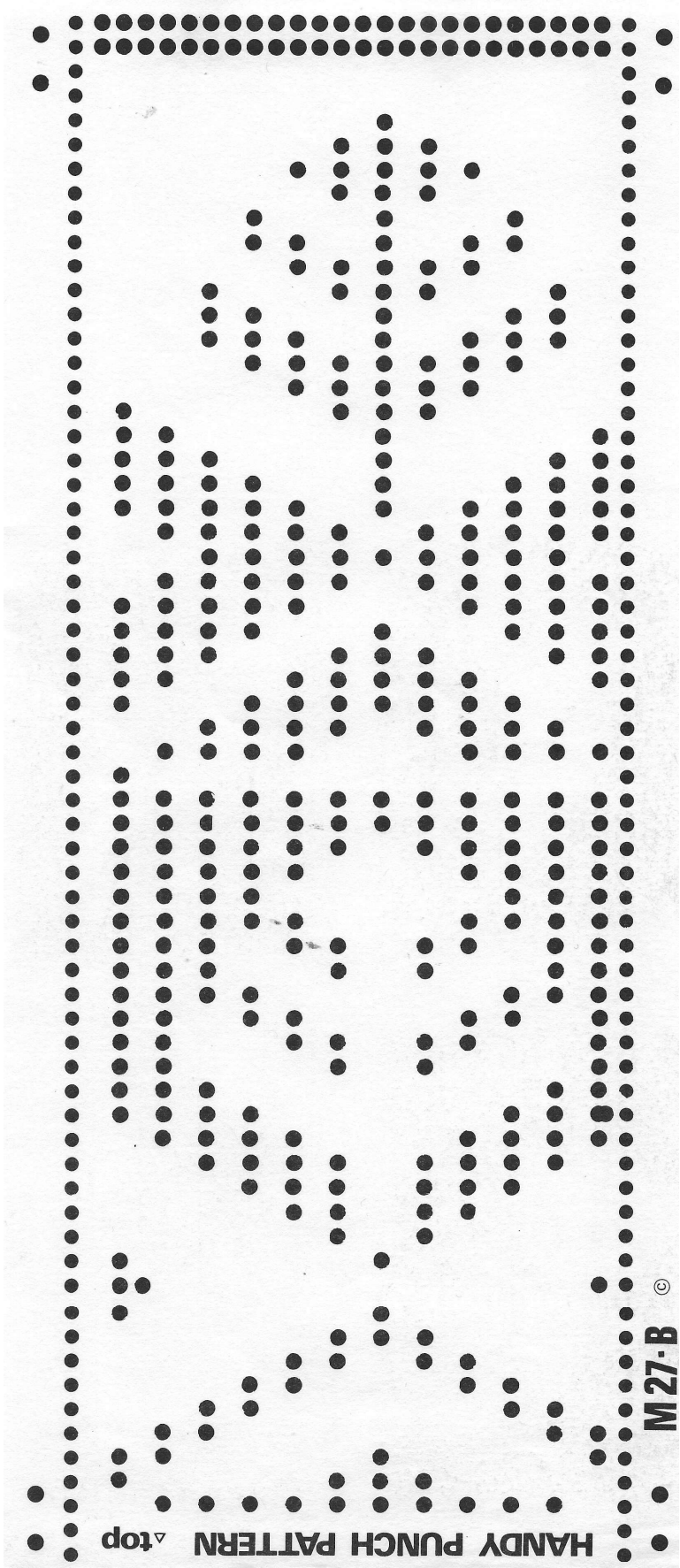
M 81 B



M 105 B



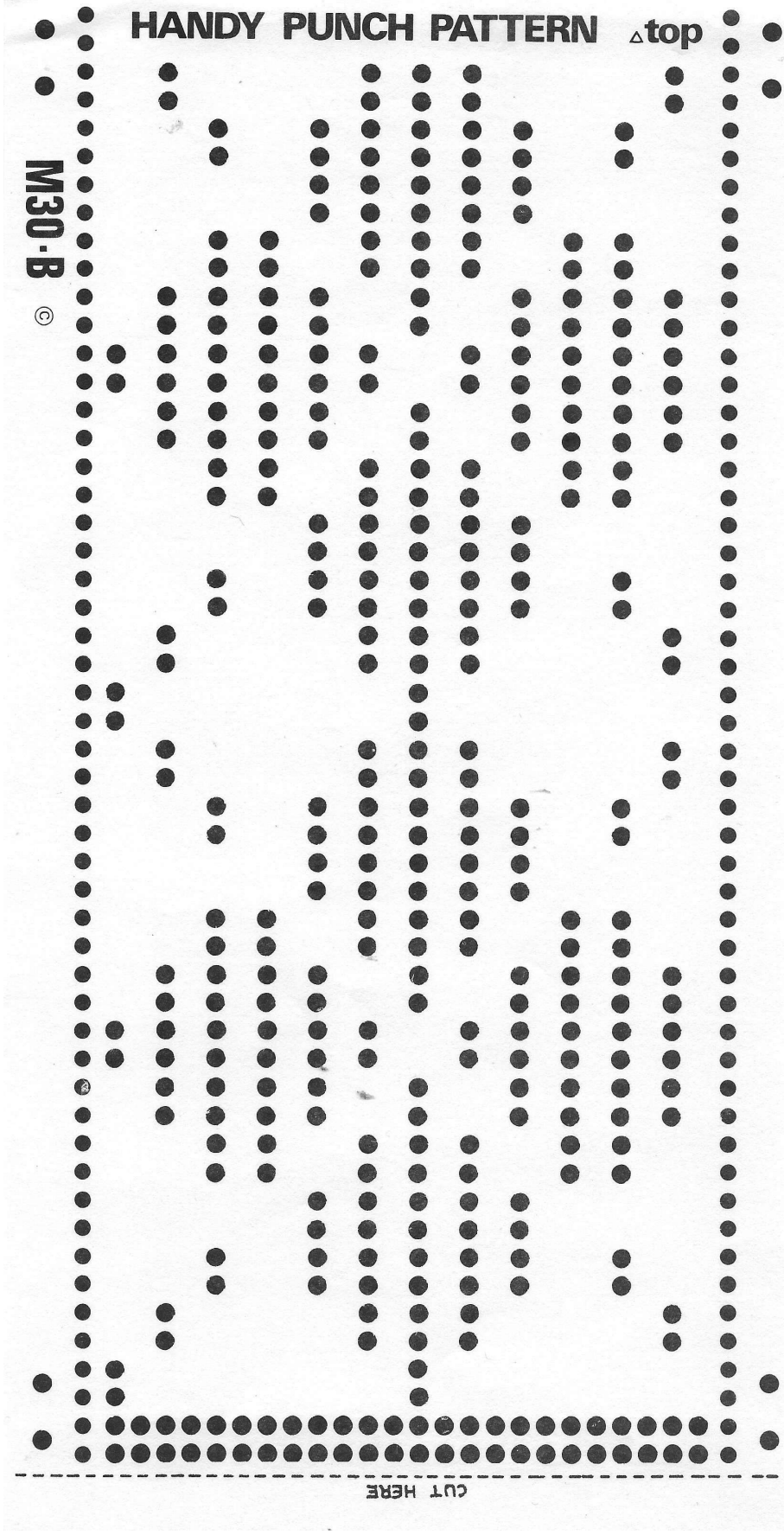
M 106 B

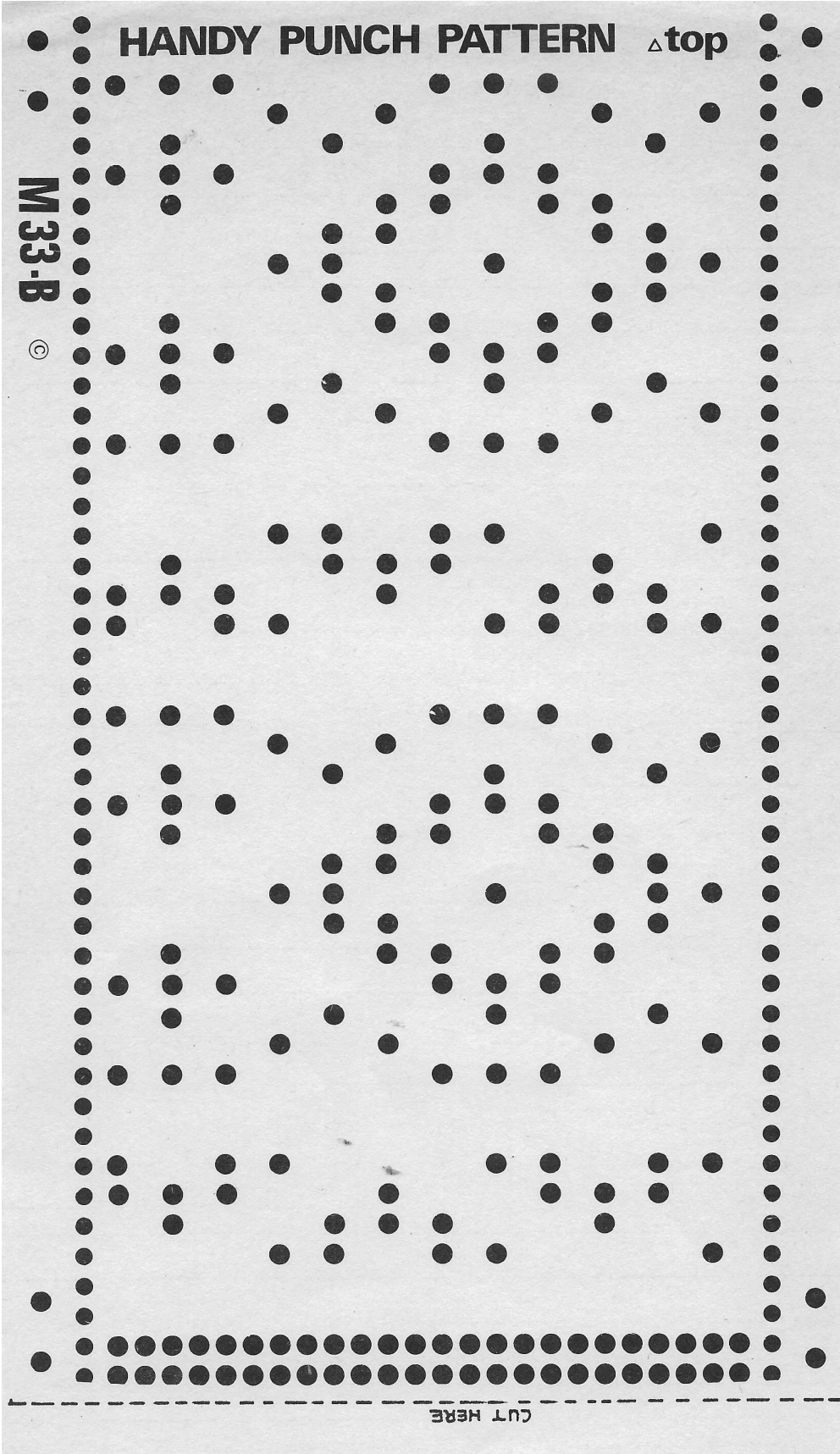


HANDY PUNCH PATTERN Δ top

M30-B

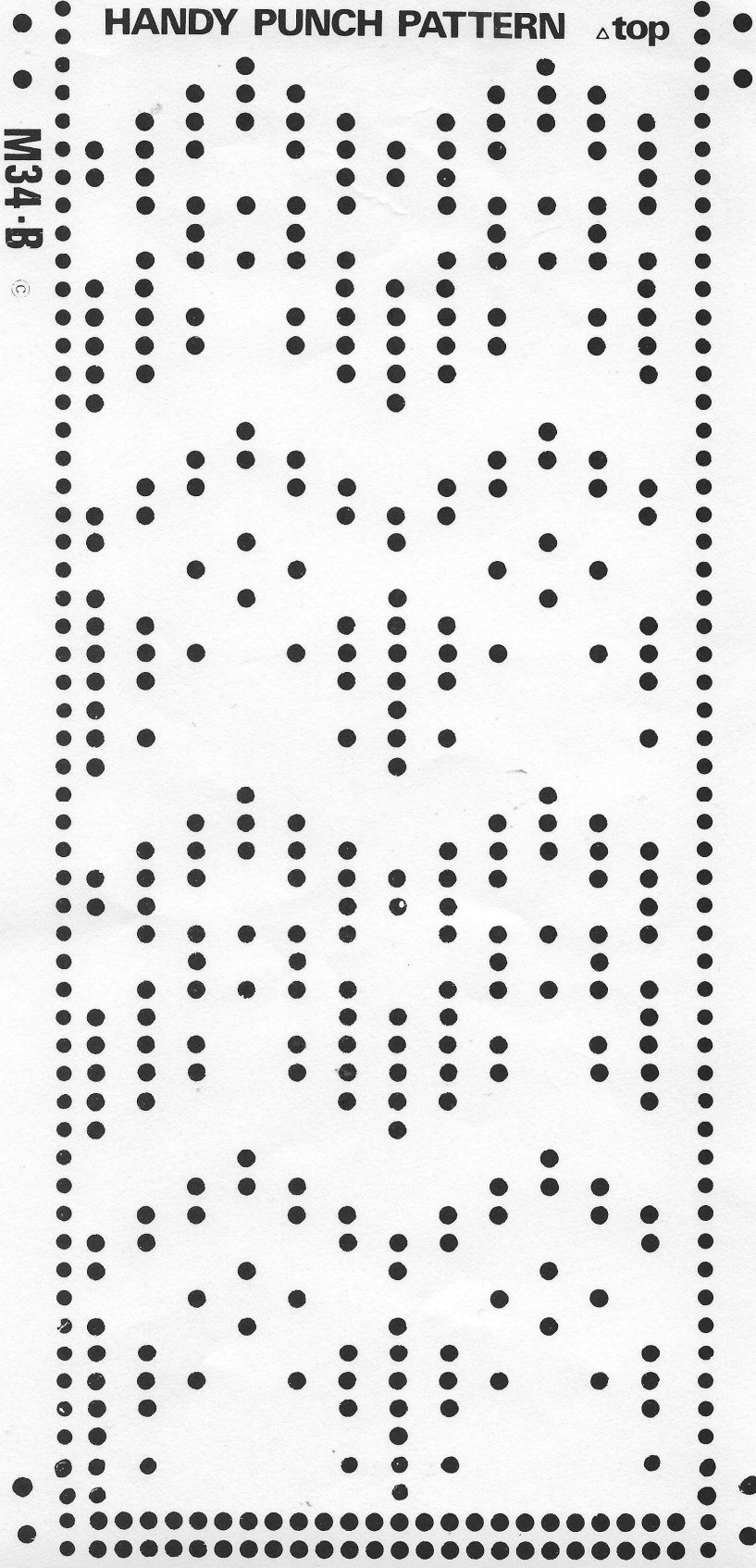
©





M34-B

HANDY PUNCH PATTERN Δ top

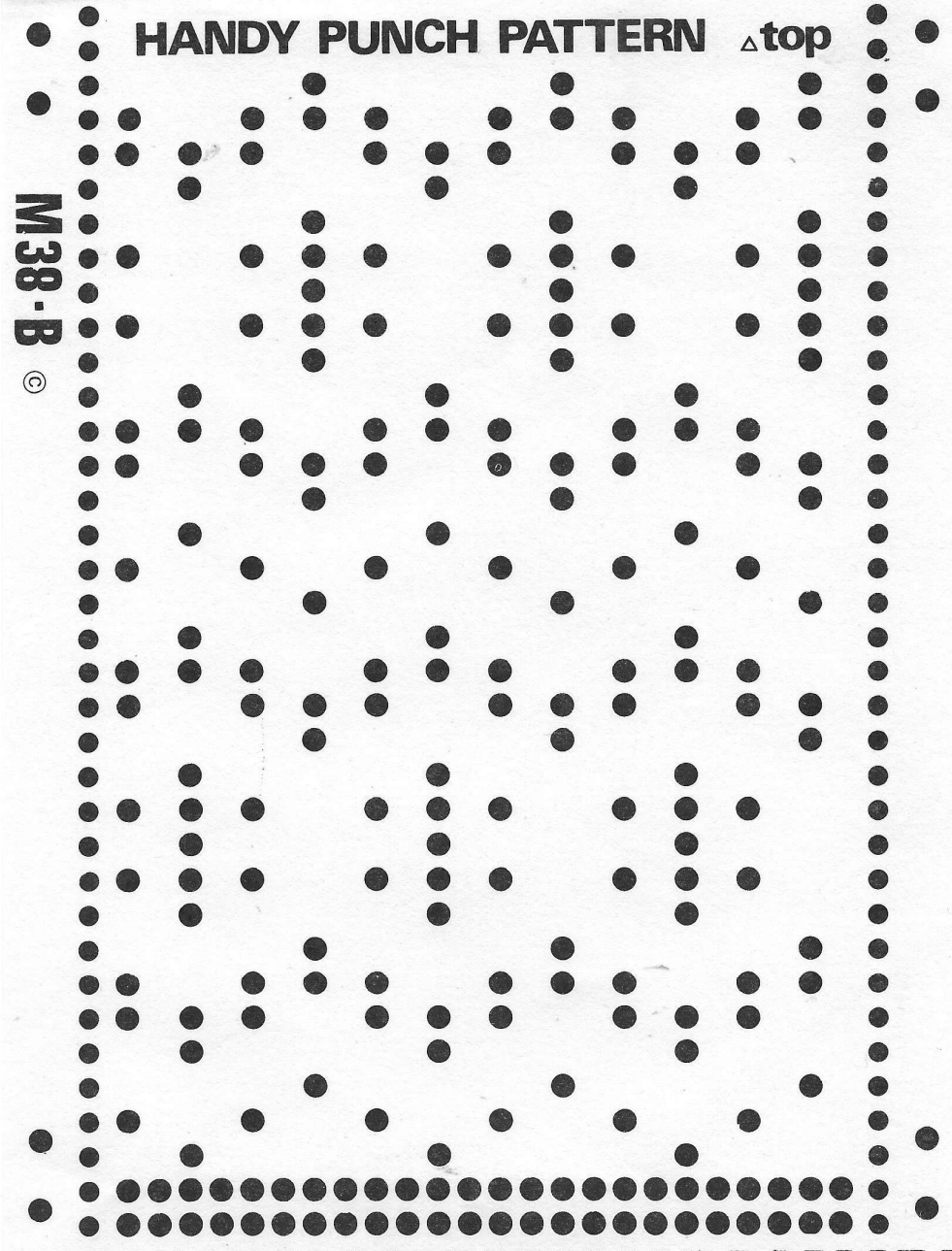


CUT HERE

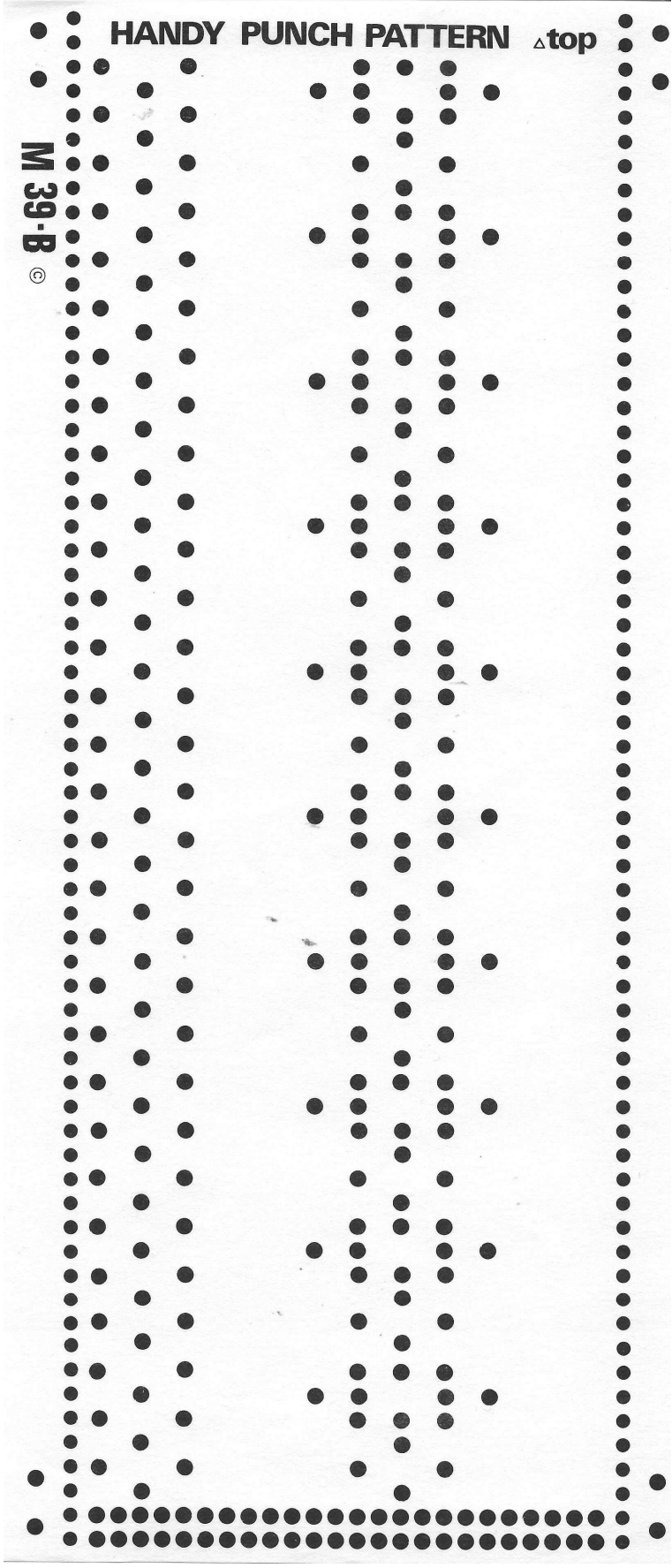
HANDY PUNCH PATTERN Δ top

M38-B

©

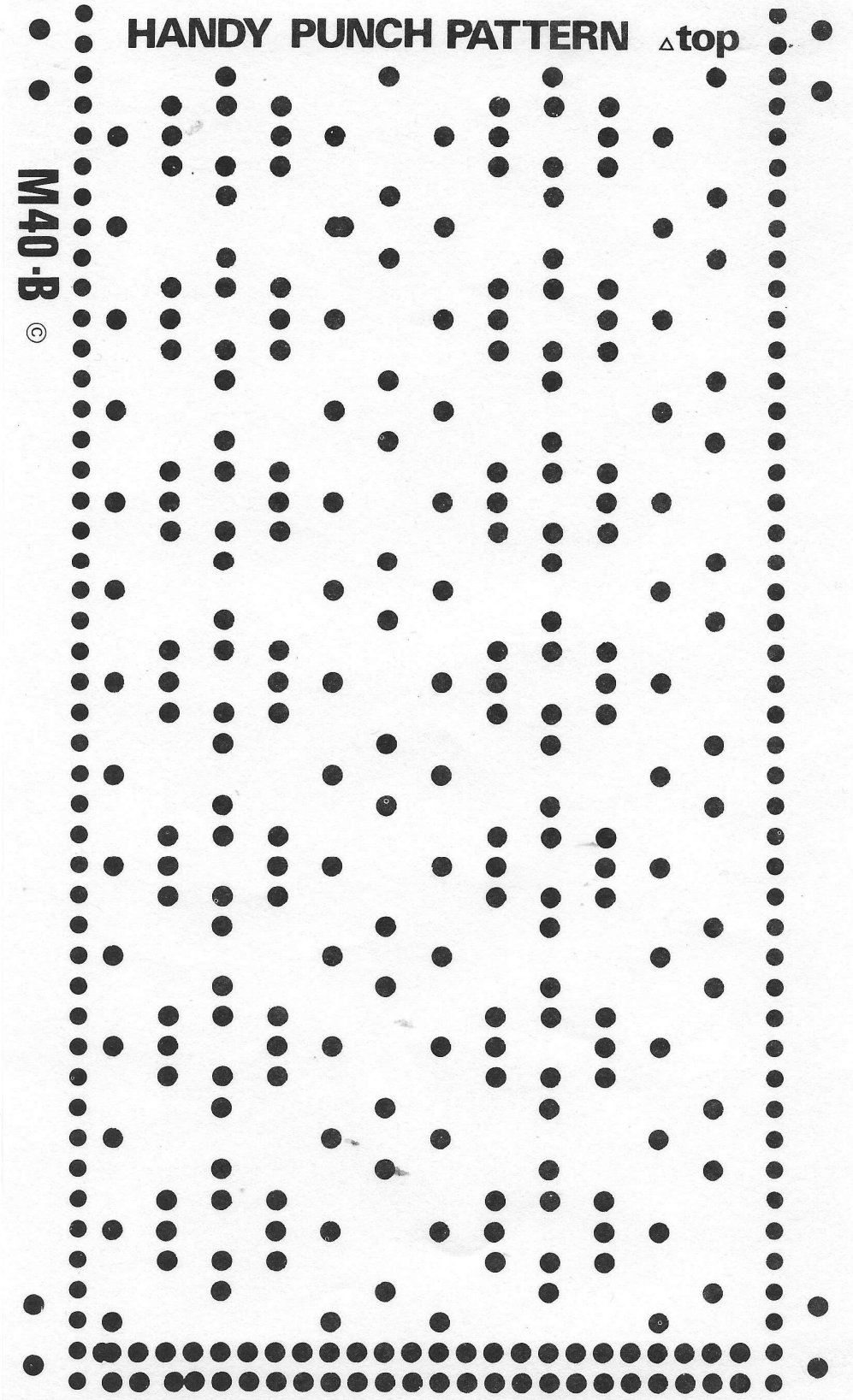


CUT HERE



M40-B ©

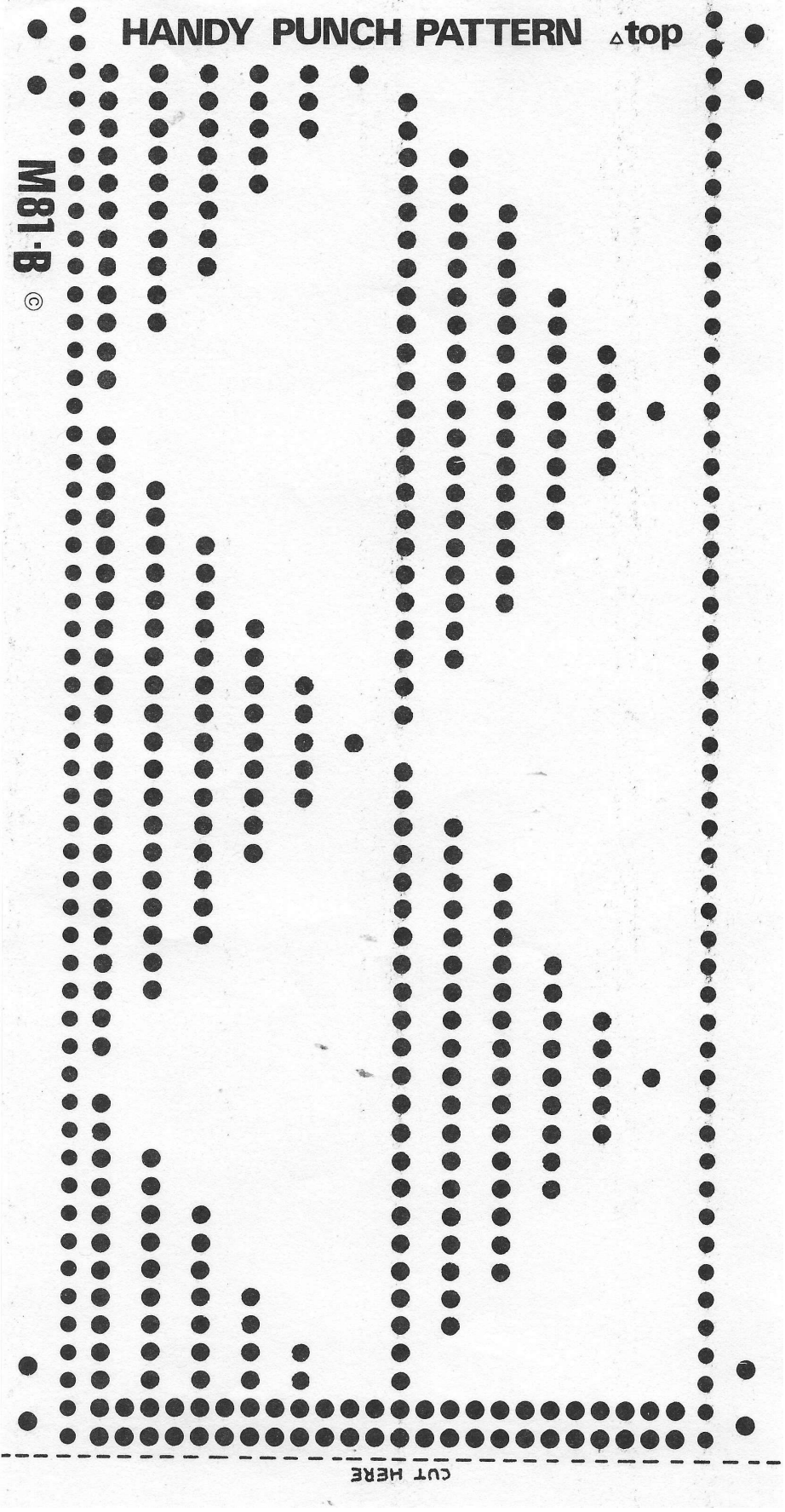
HANDY PUNCH PATTERN Δ top

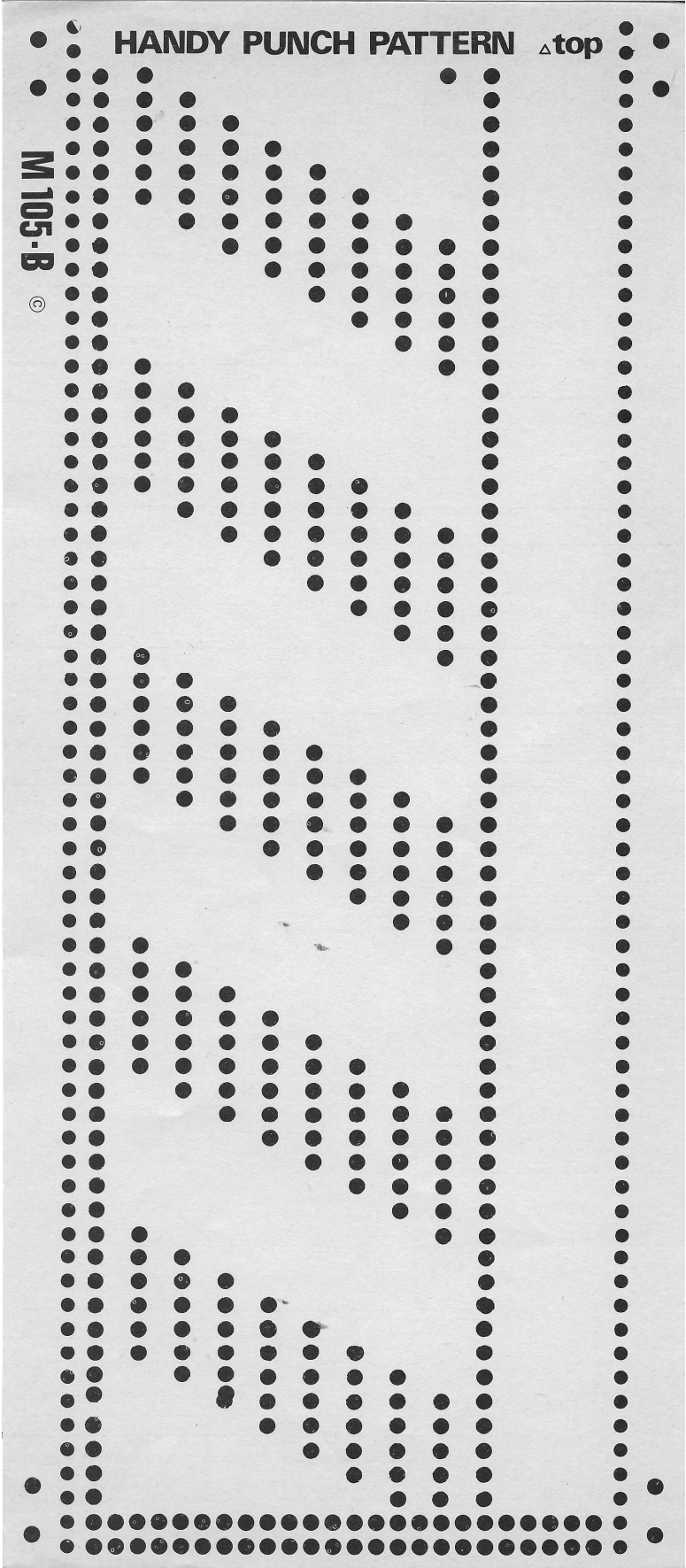


CUT HERE

HANDY PUNCH PATTERN Δ top

M81-B
©

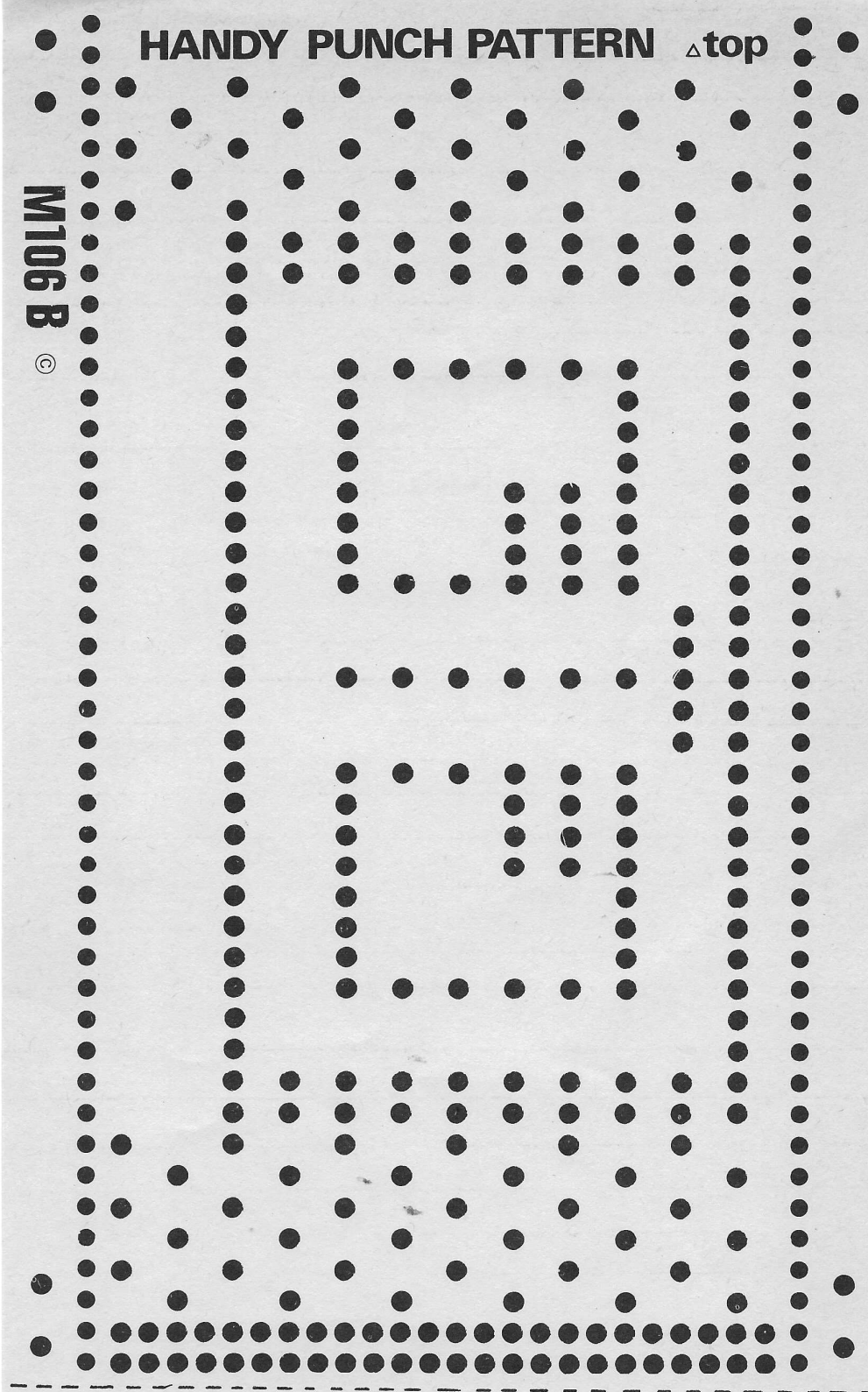




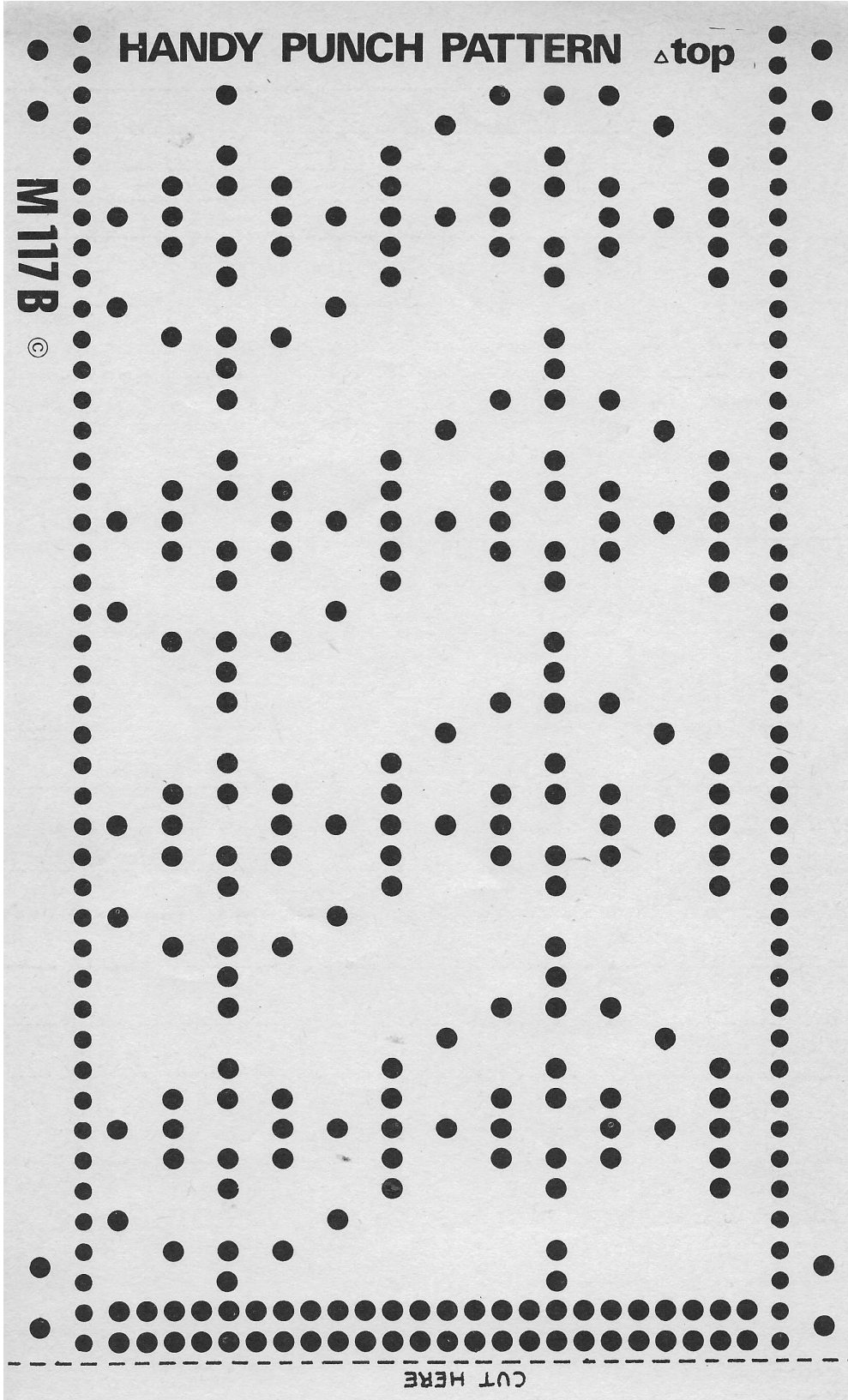
HANDY PUNCH PATTERN Δ top

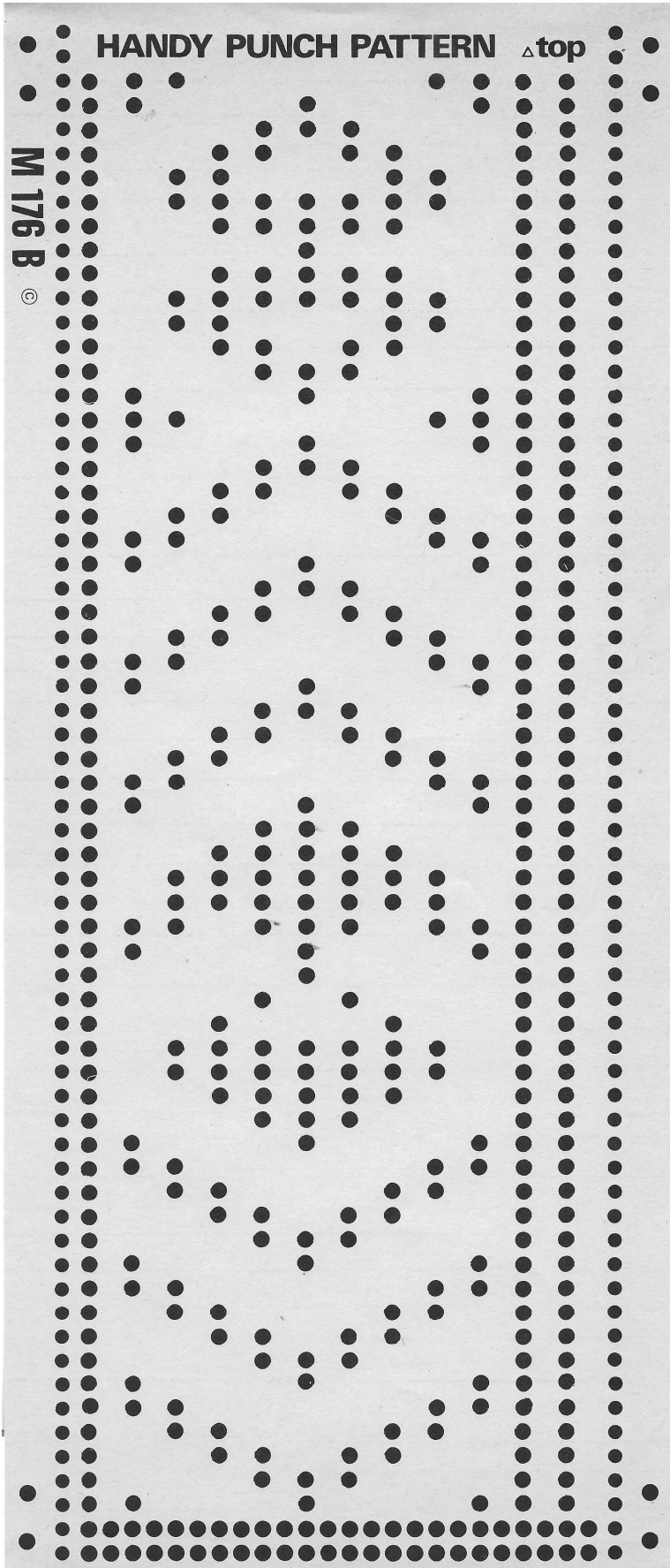
M106 B

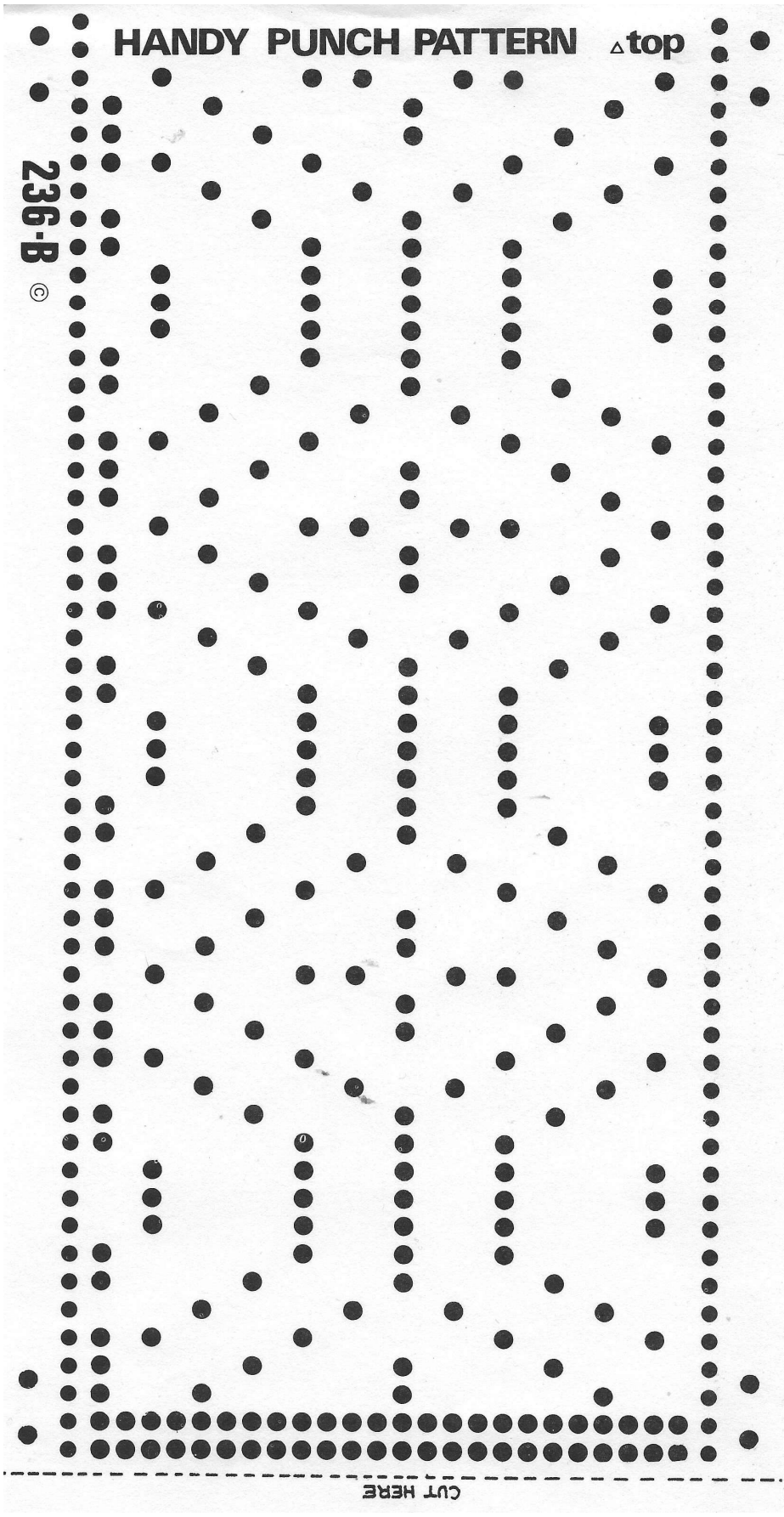
©

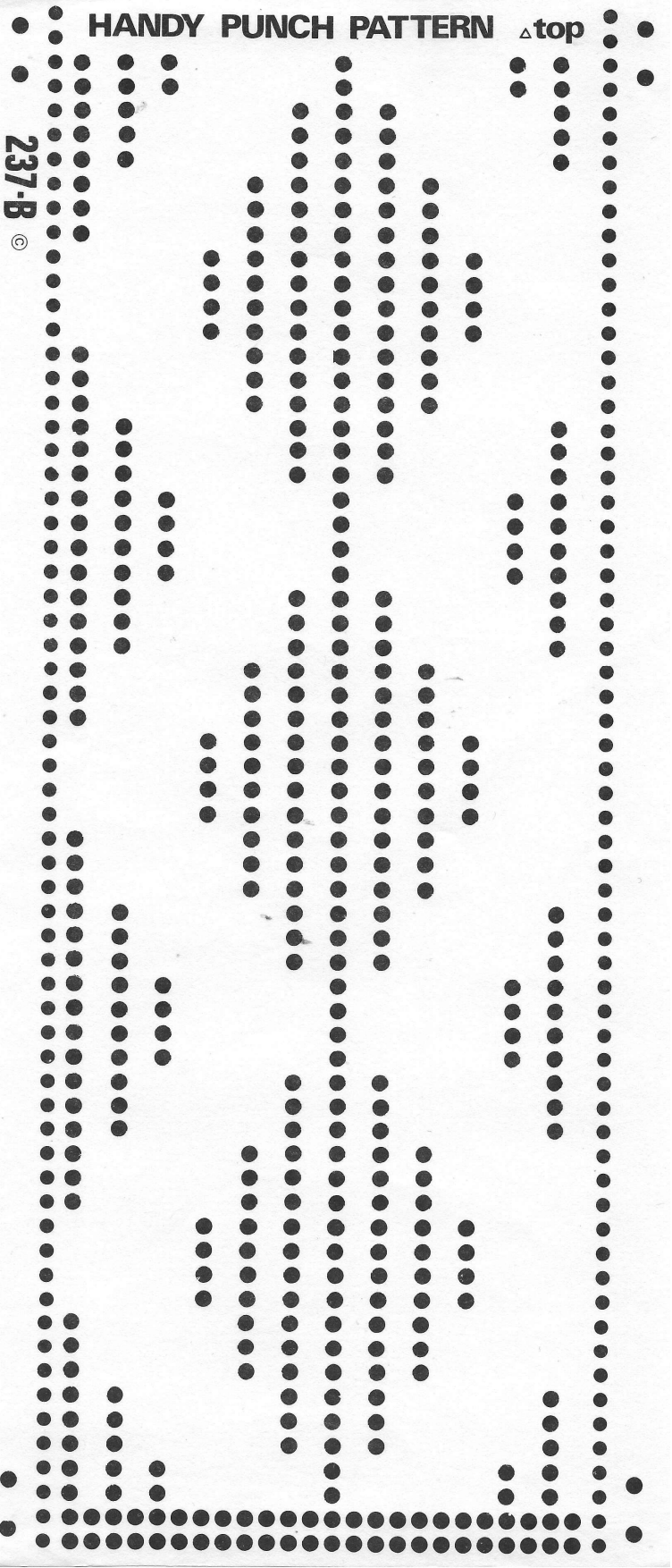


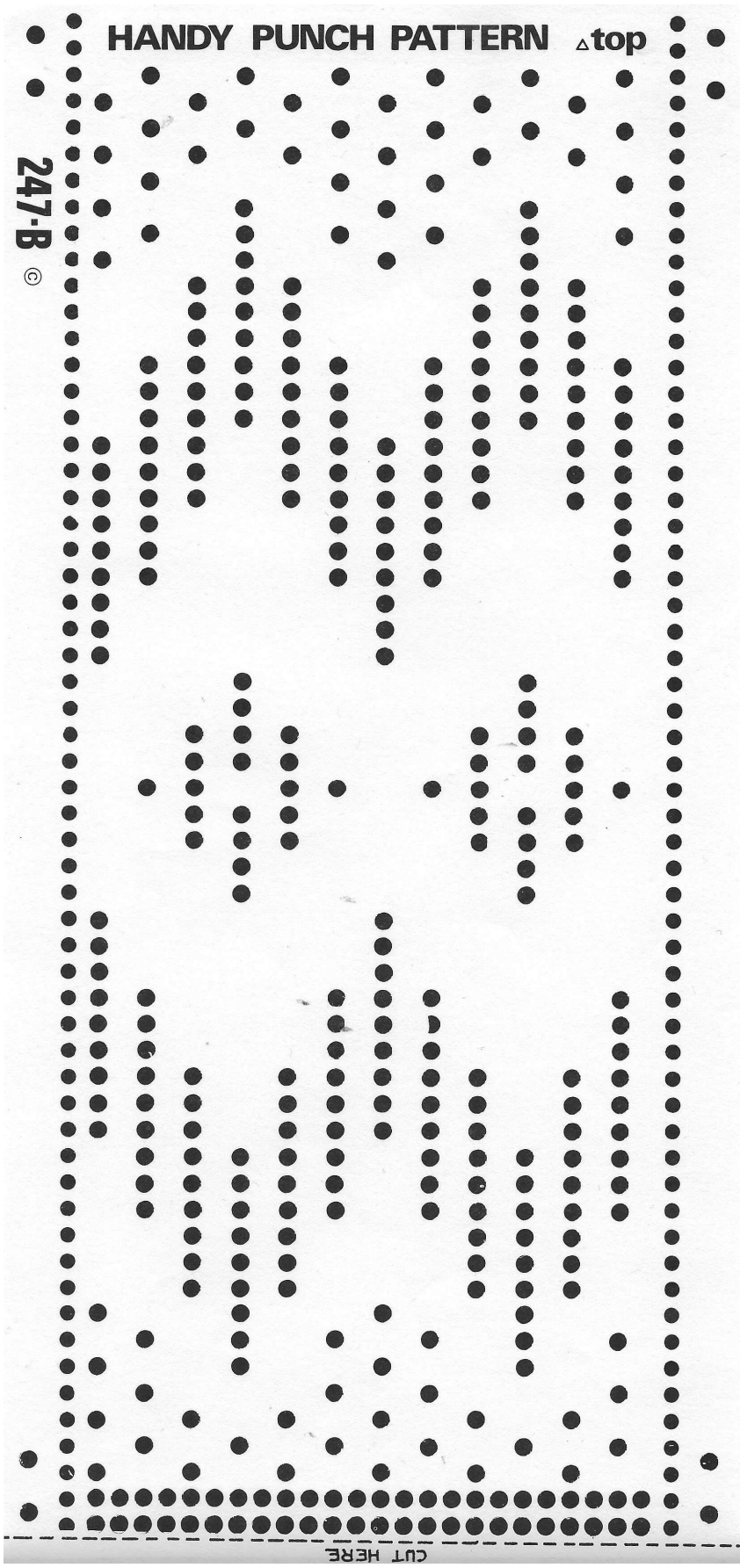
CUT HERE







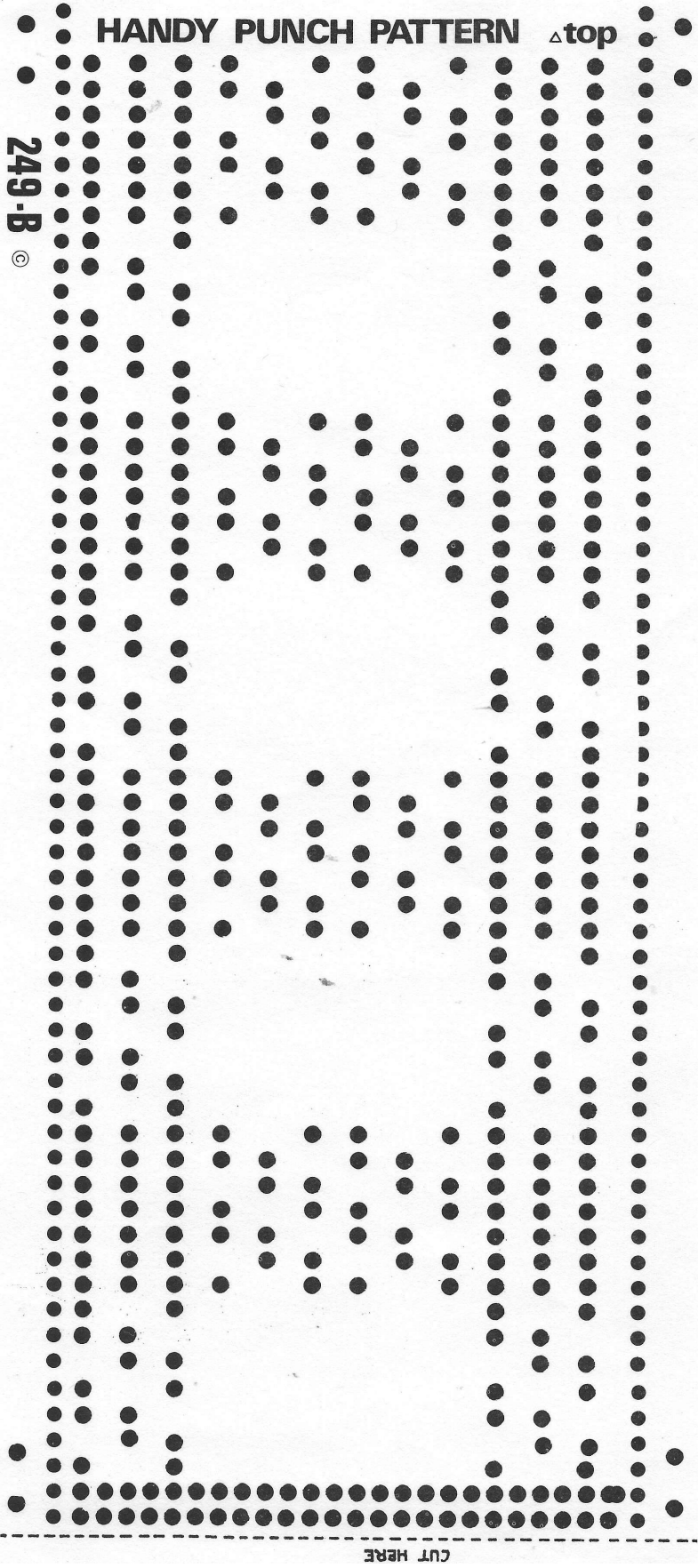




HANDY PUNCH PATTERN Δ top

247-B
©

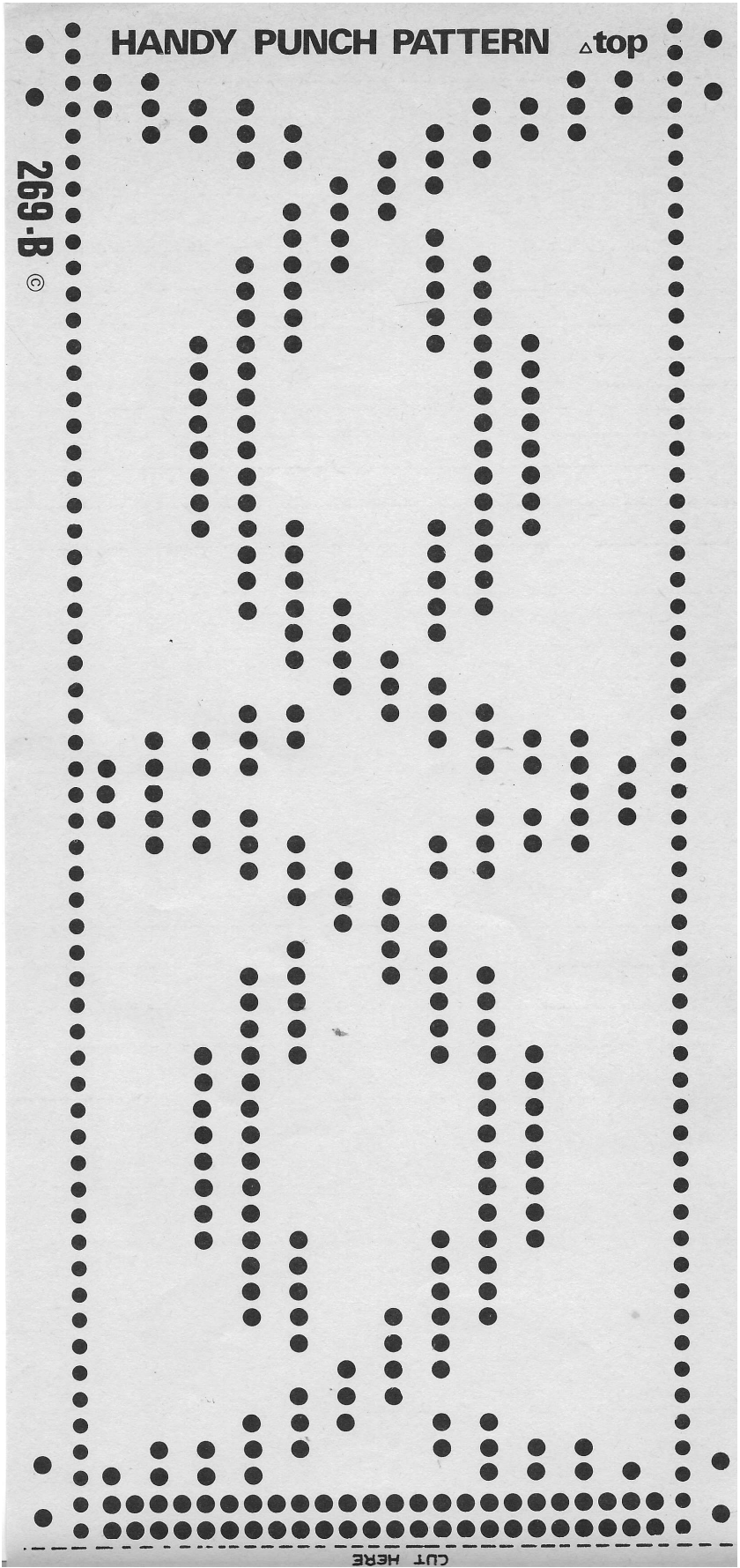
CUT HERE

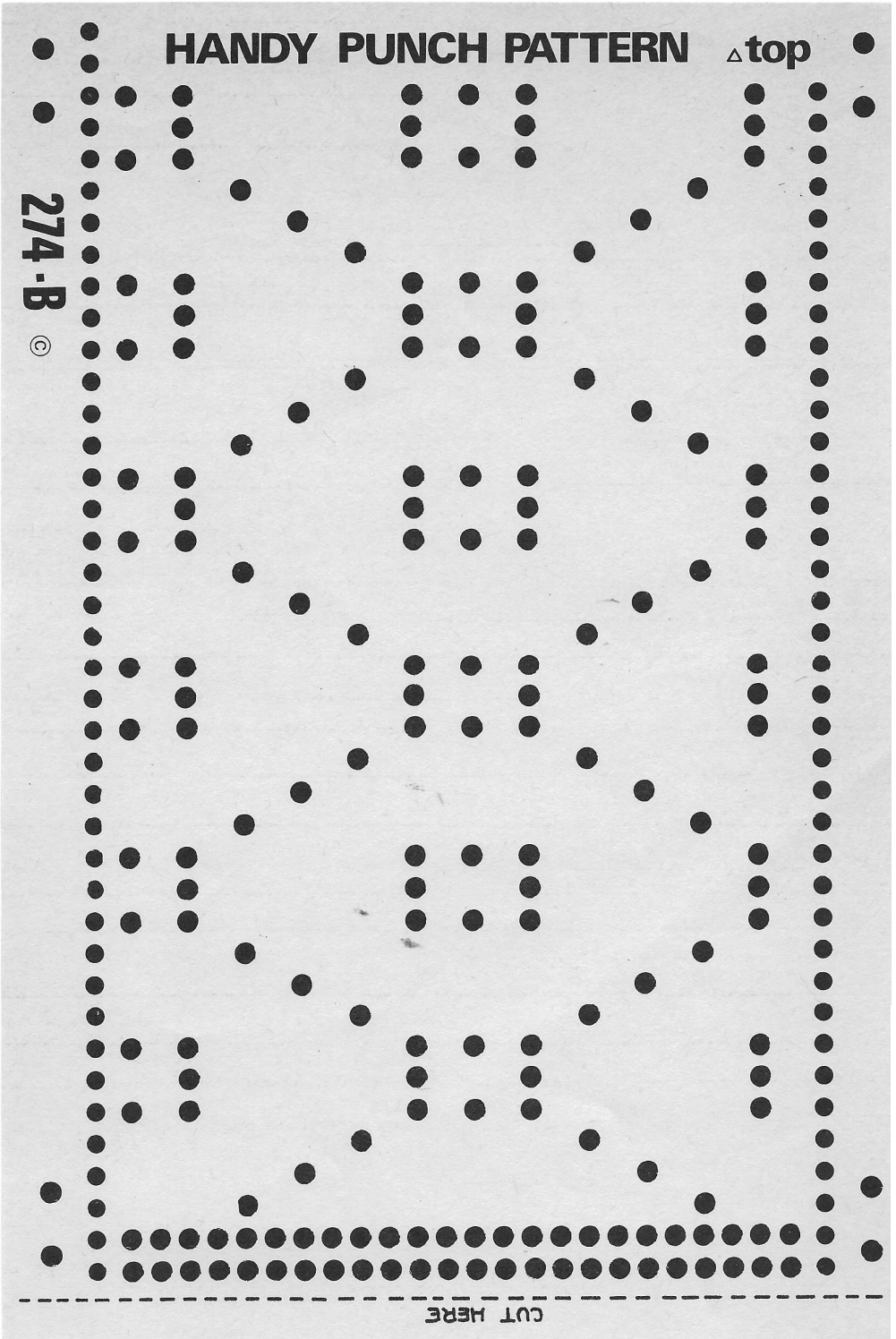


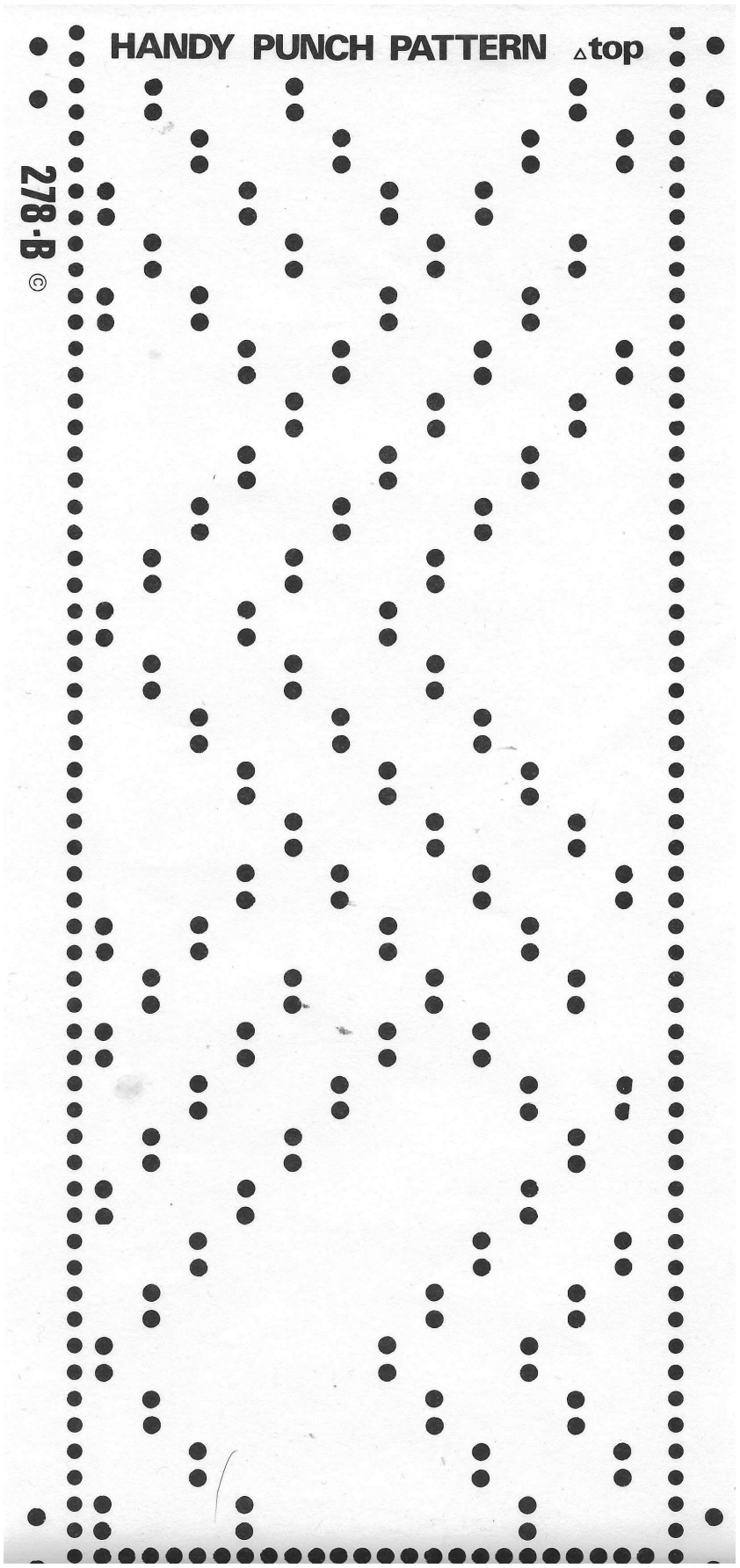
HANDY PUNCH PATTERN Δ top

249-B ©

CUT HERE

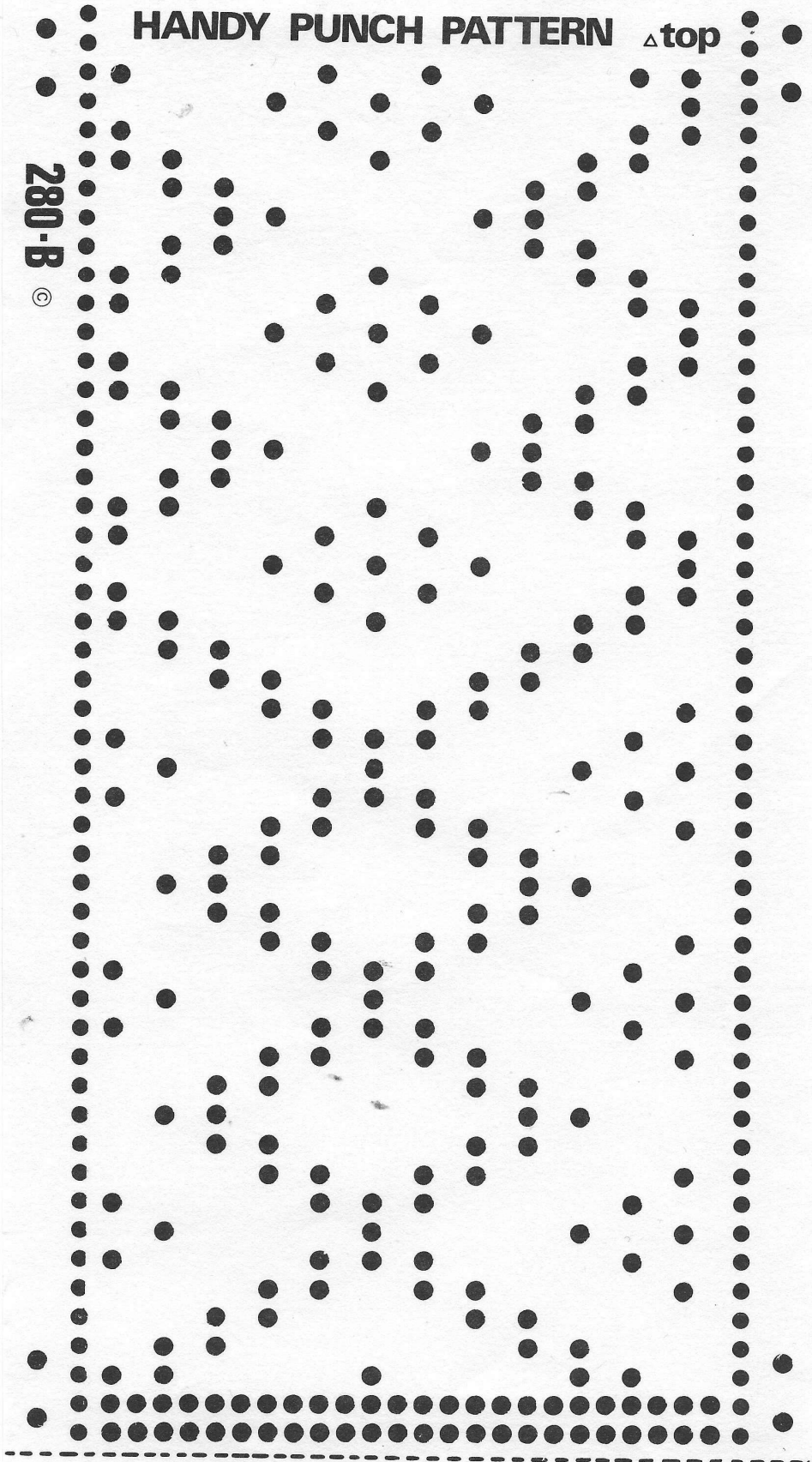






HANDY PUNCH PATTERN Δ top

280-B ©



CUT HERE