

TEAMS · DISC 2 TRACK 1

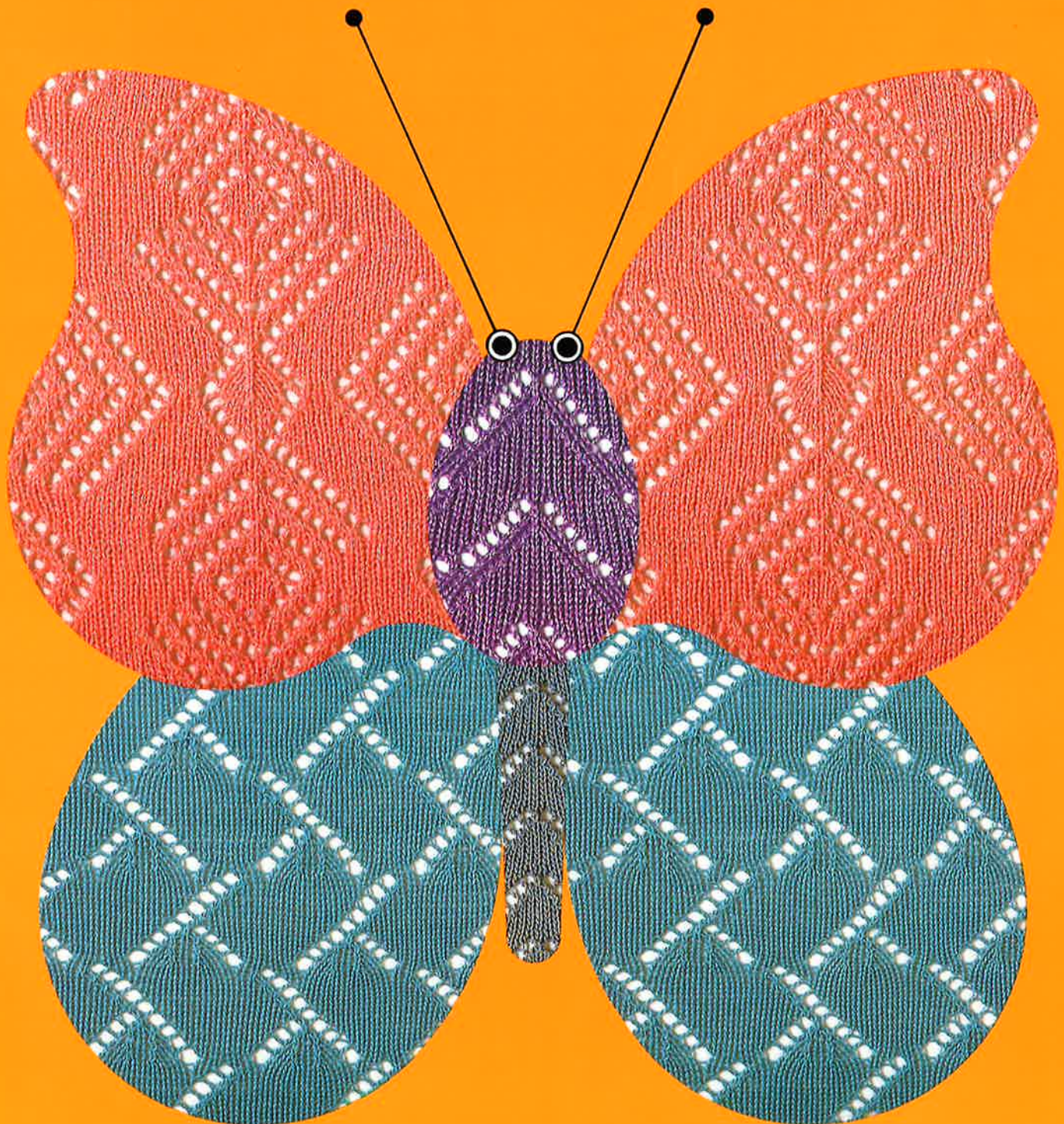
# Electroknit® Pattern Cards

## トピカル模様カード集

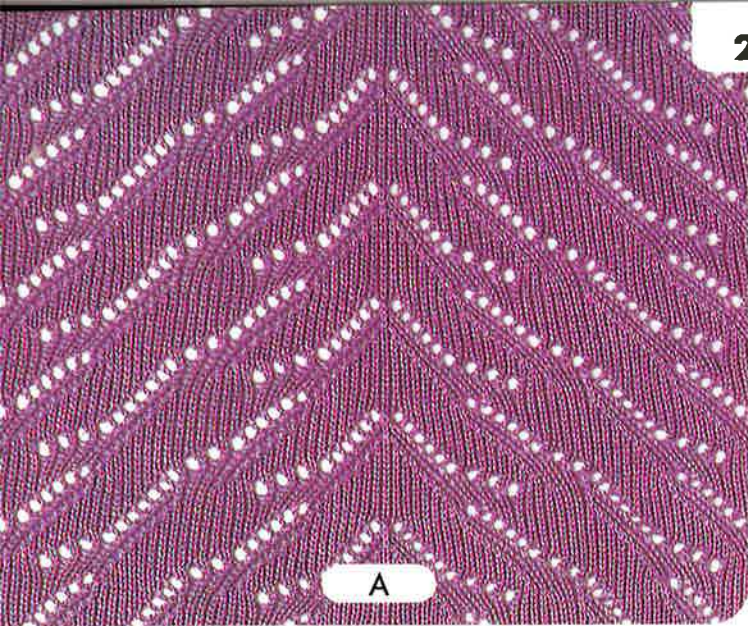
### Vol.2 LACE PATTERNS

#### 第2集 / レース模様

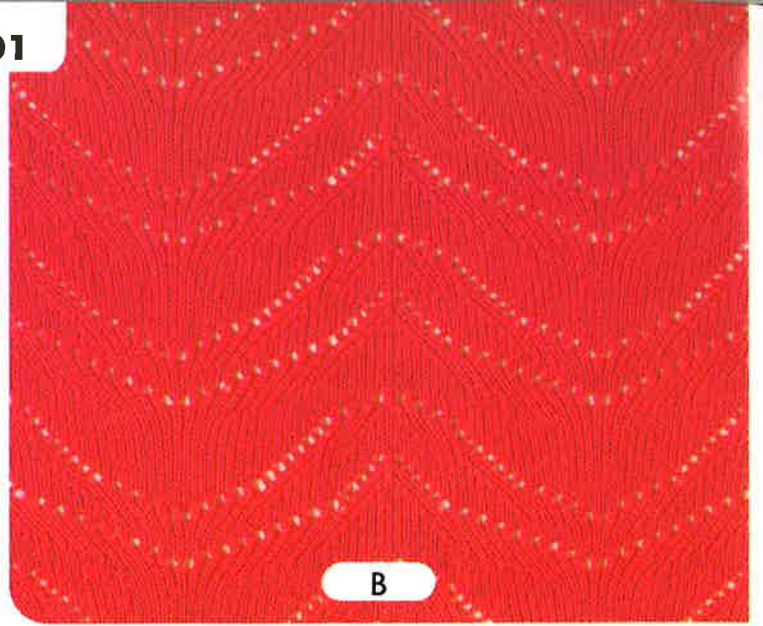
Card Nos. No.201-210





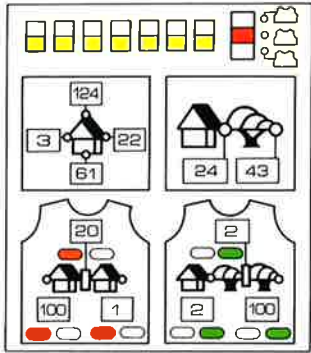


A

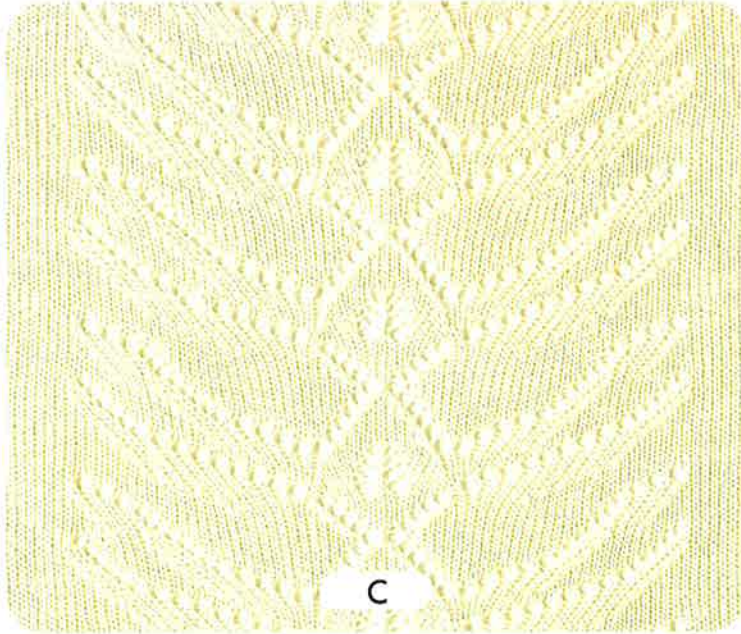
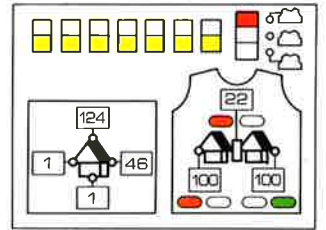


B

A ①

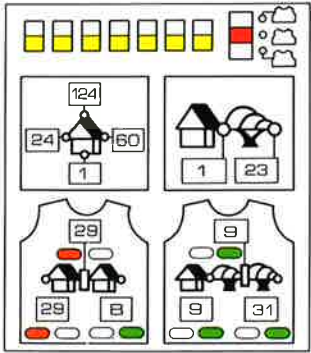


B ①

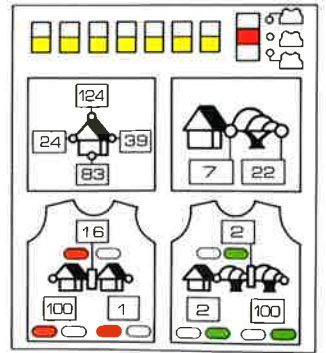


C

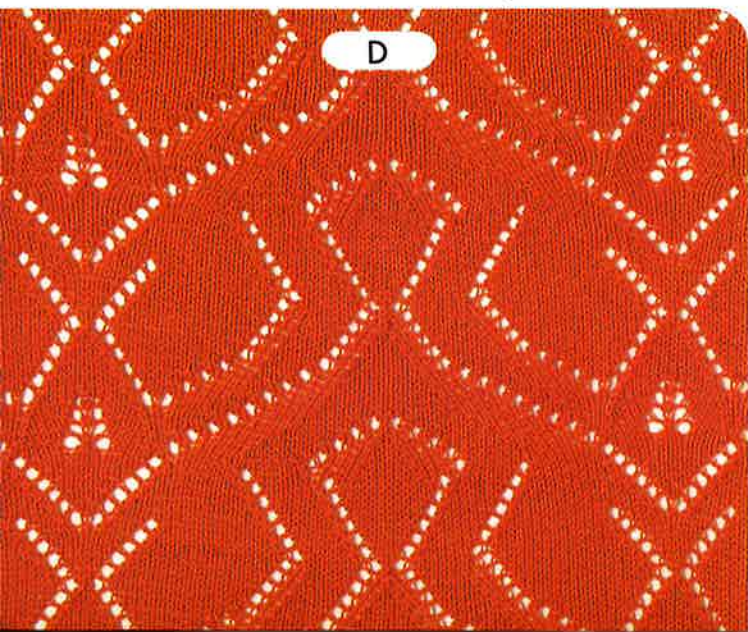
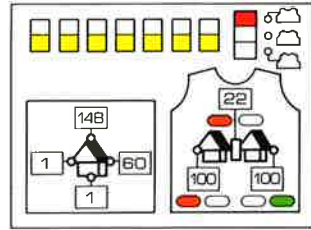
C ①



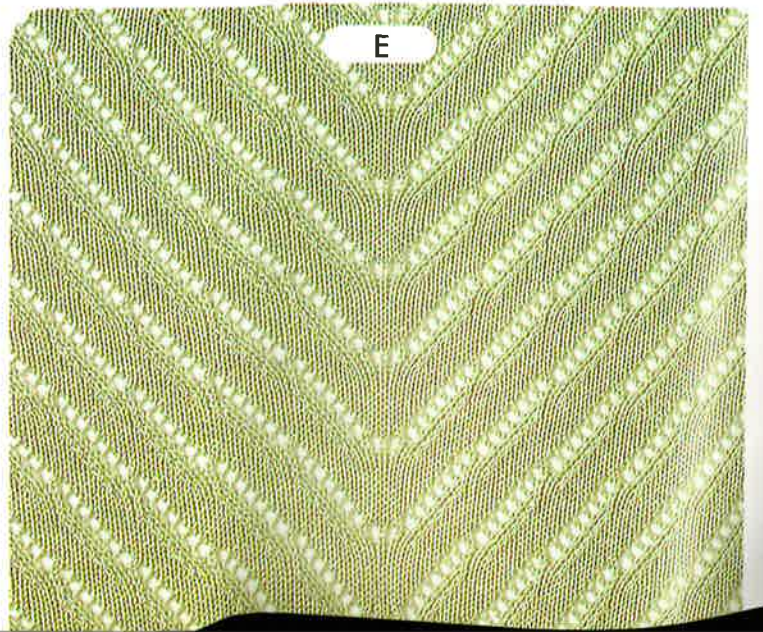
E ①



D ①

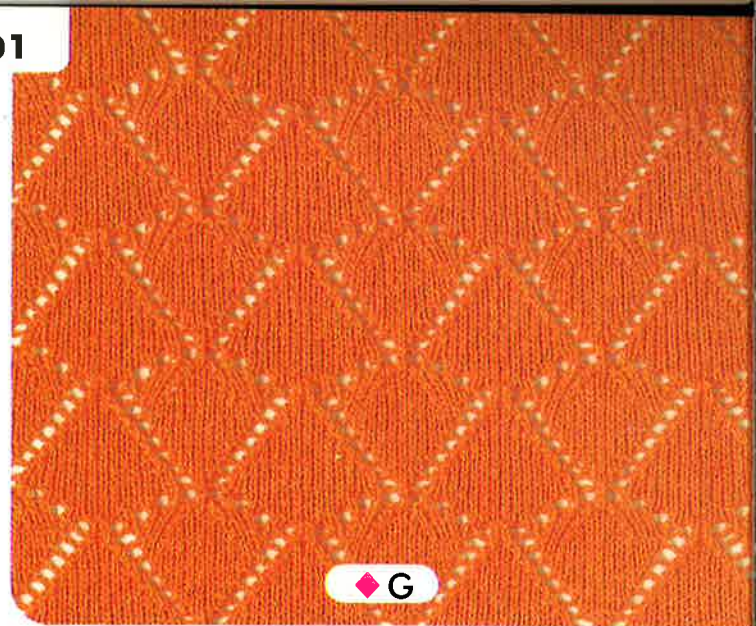
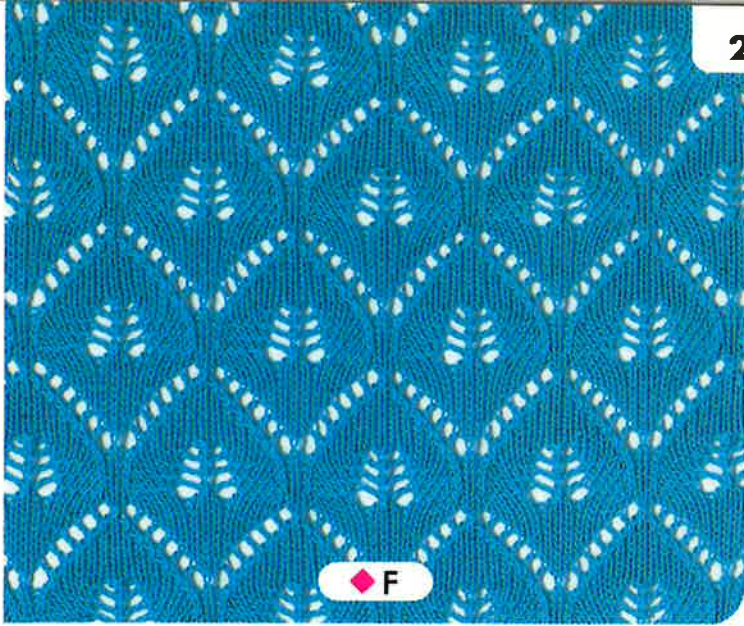


D



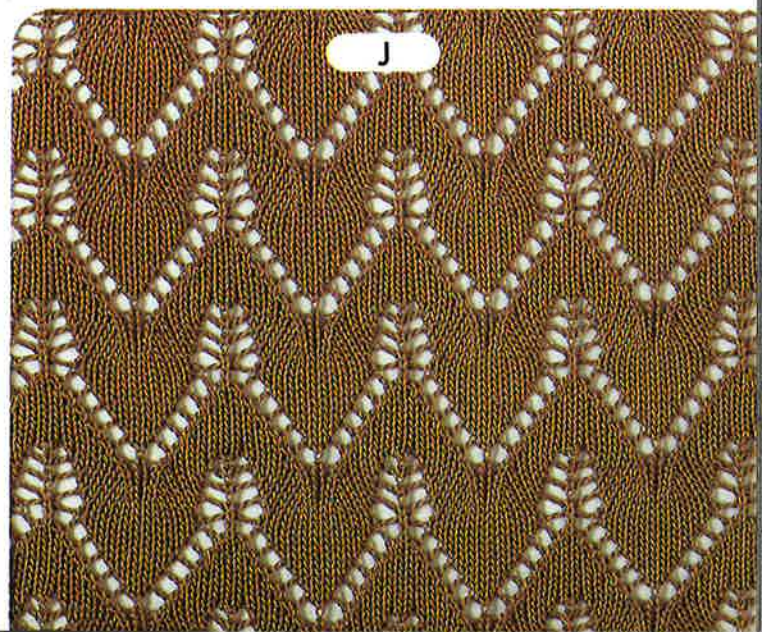
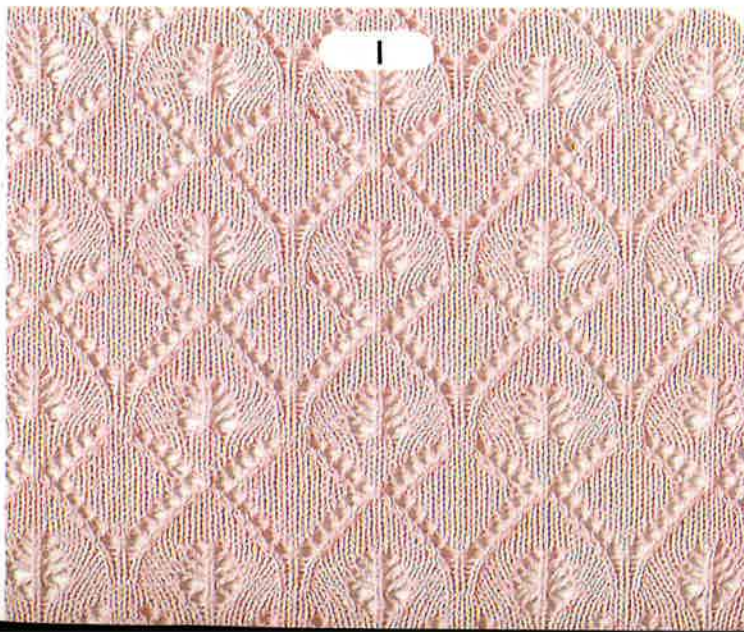
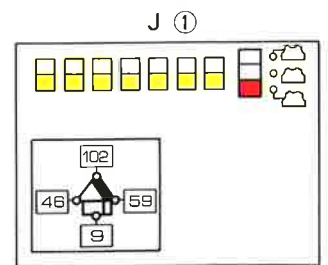
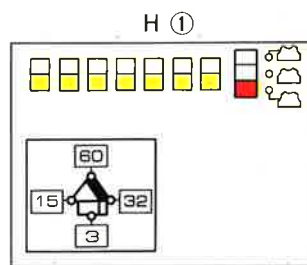
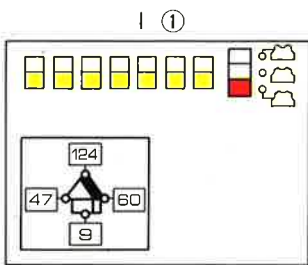
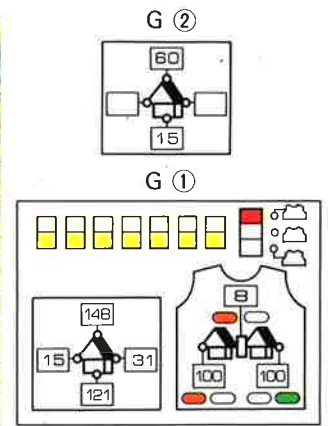
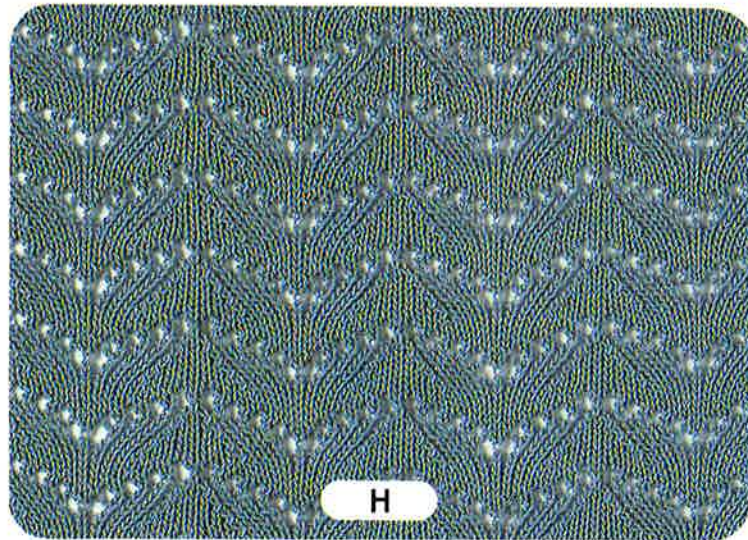
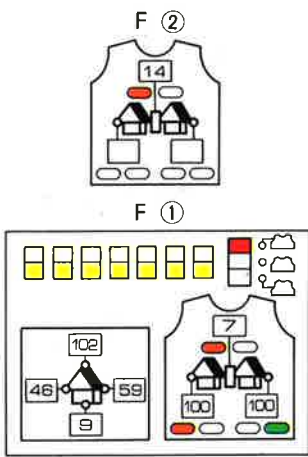
E





①のプログラムで編みおわたたら(もどし)キーを押し、模様カードをセットラインまでもどします。次に②のプログラムを入れ、(はじめ)キーを押し、つづけて編みます。以後◆印の模様は同様に操作します。

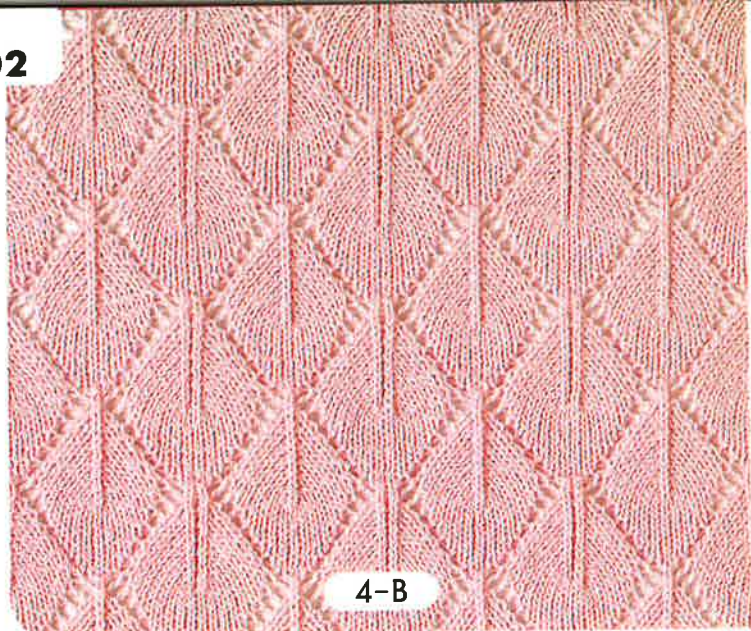
After knitting with Program ①, set the Pattern Card to the SET LINE by pushing (RR) key. Make the Program ②, push (CF) key and continue the knitting. Operate in the same way for the pattern with ◆ mark from this time forth.







◆ 4-A

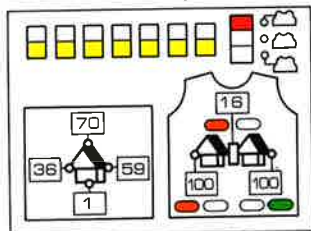


4-B

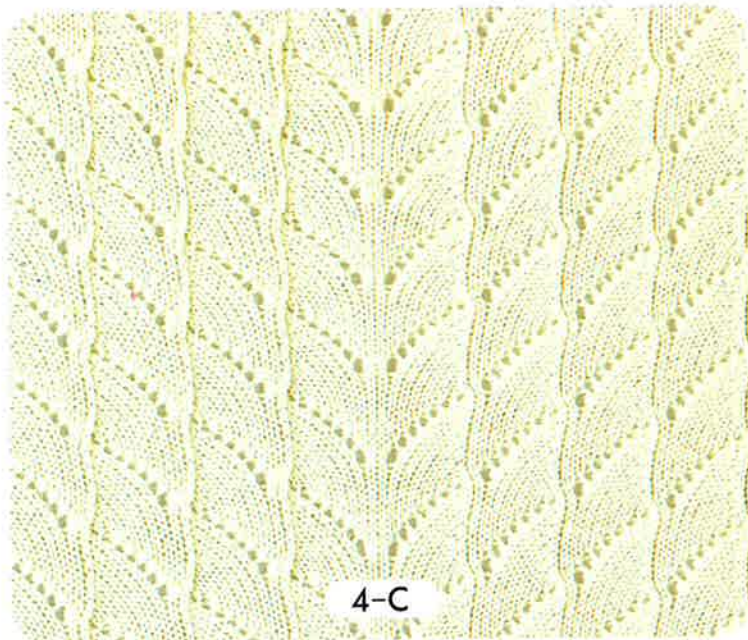
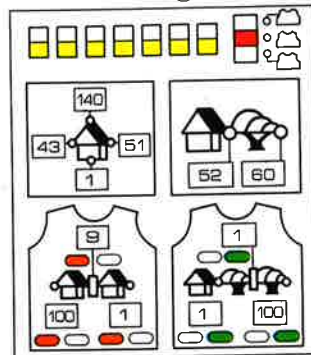
4-A ②



4-A ①

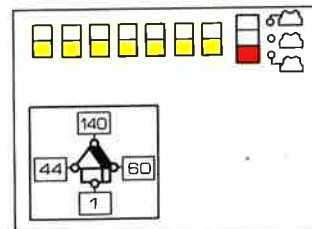


4-D ①

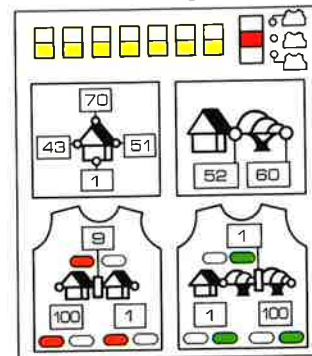


4-C

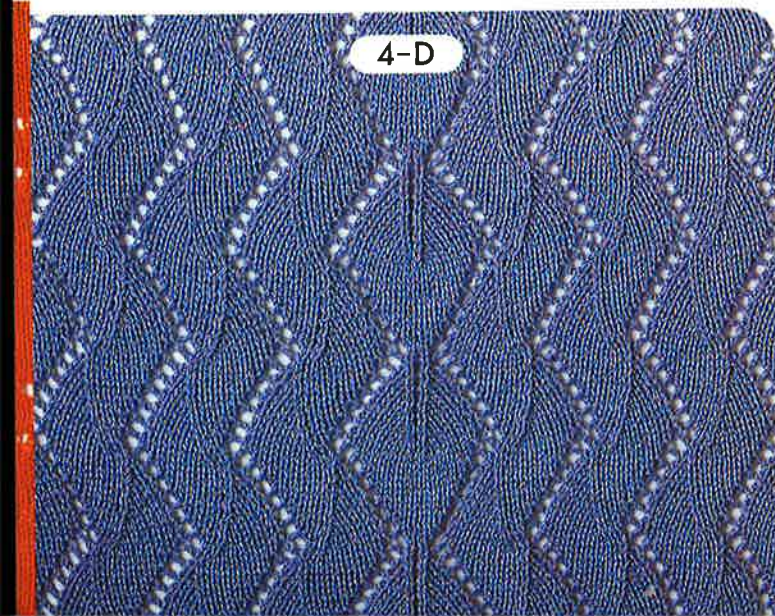
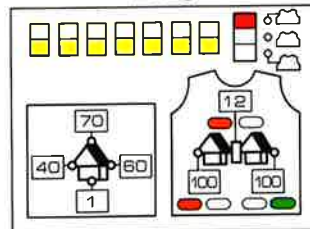
4-B ①



4-C ①



4-E ①

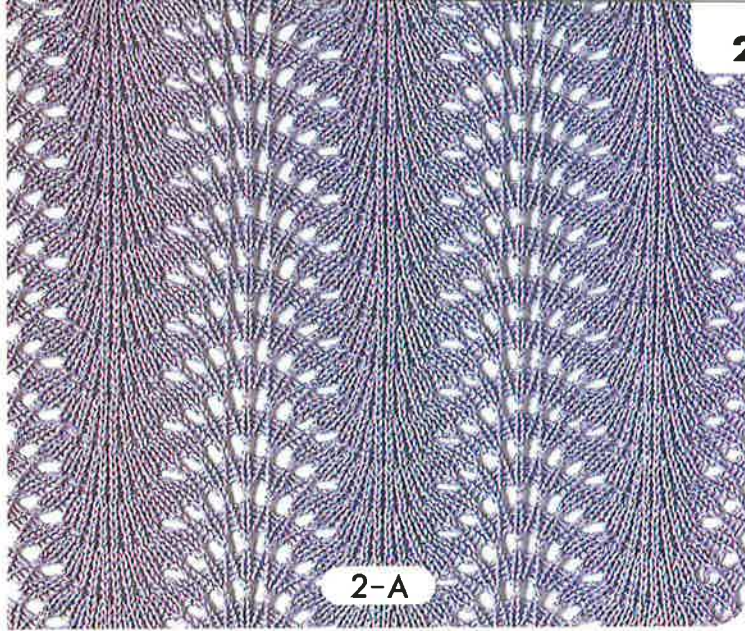


4-D

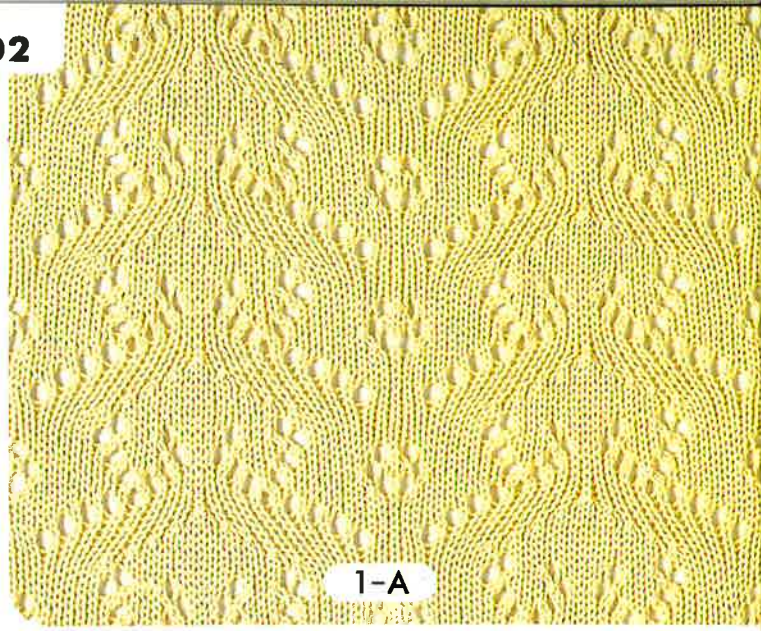


4-E



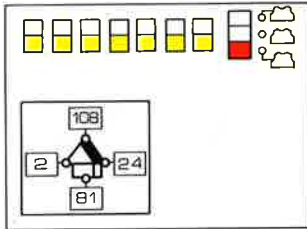


2-A



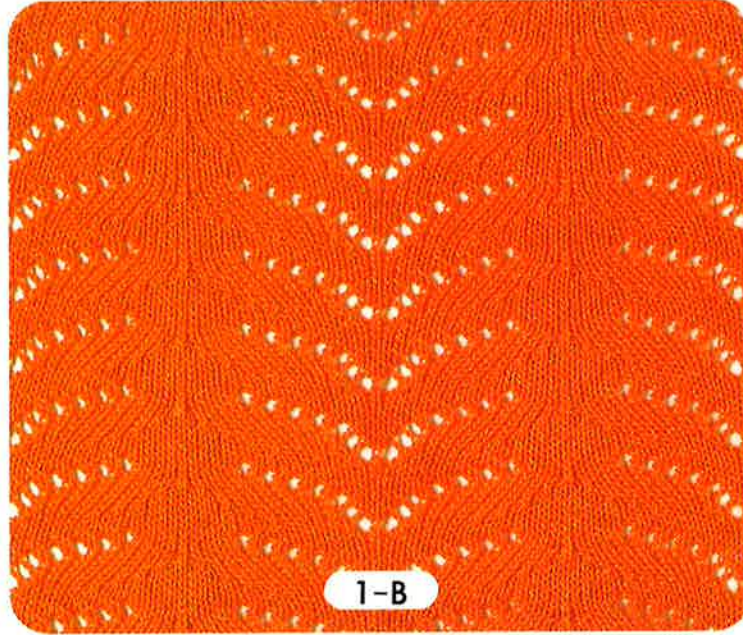
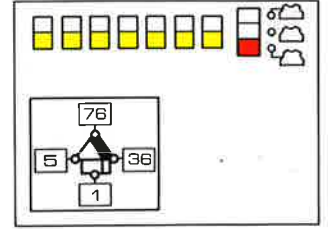
1-A

2-A ①



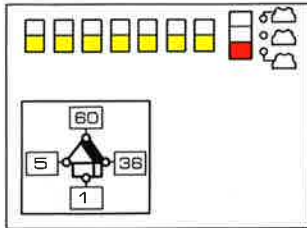
模様の上に平編6段編みます。  
Knit 6 rows with Plain stitch  
between patterns.

1-A ①

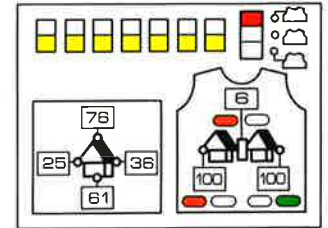


1-B

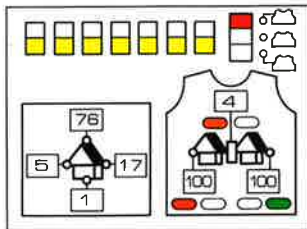
1-B ①



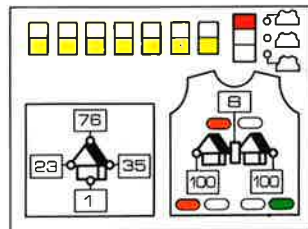
1-D ②



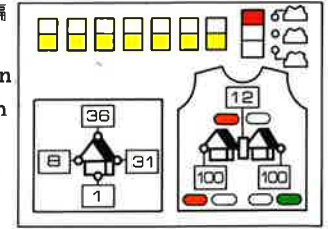
1-C ①



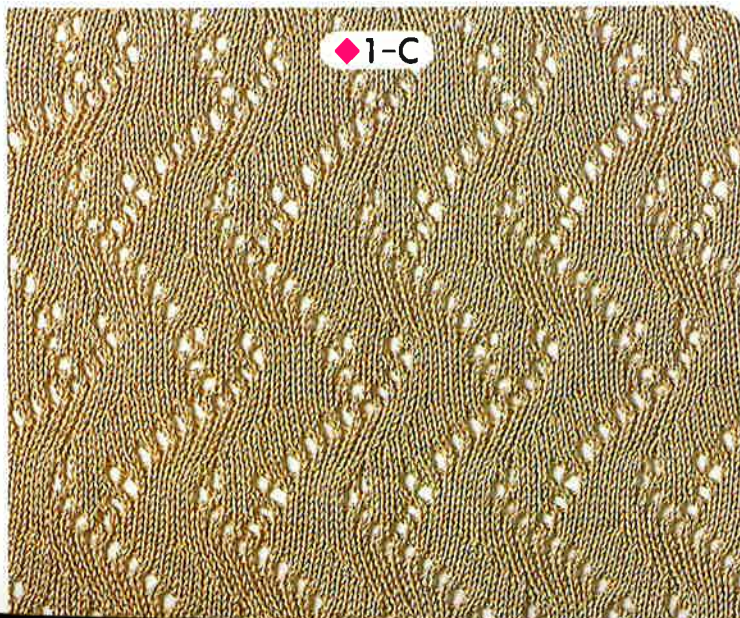
1-C ②



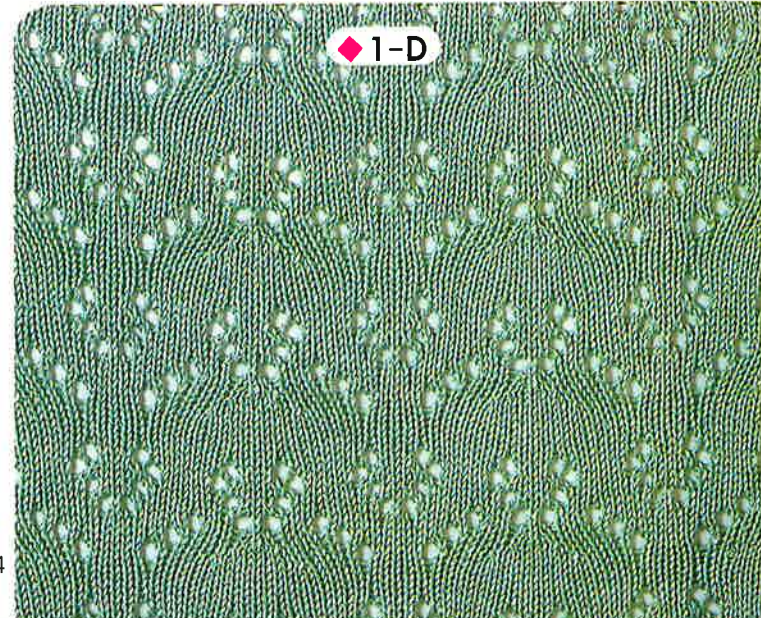
1-D ①



①・②で1模様。模様の上に平編  
8段編みます。  
①+②=One complete pattern  
Knit 8 rows with Plain stitch  
between patterns.

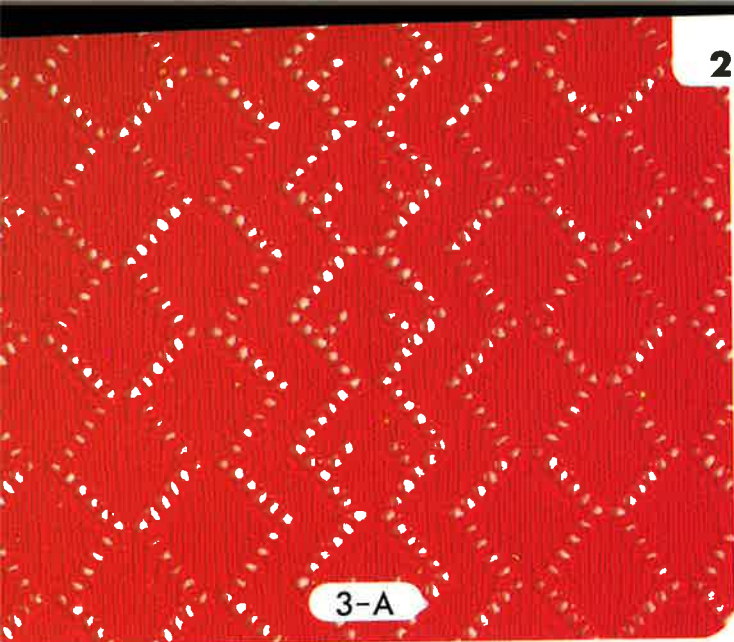


◆1-C

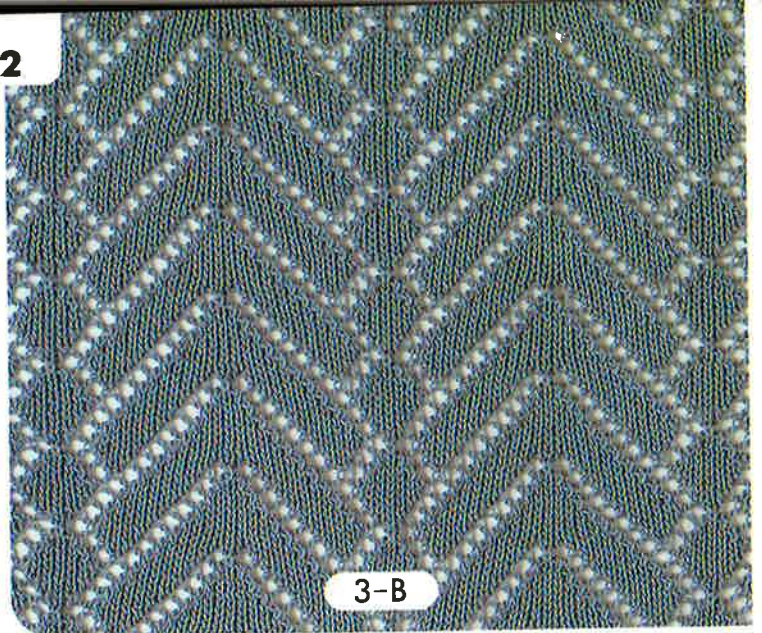


◆1-D



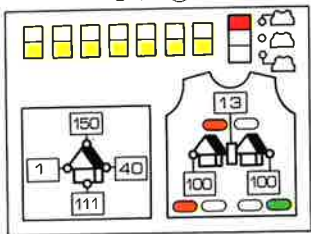


3-A

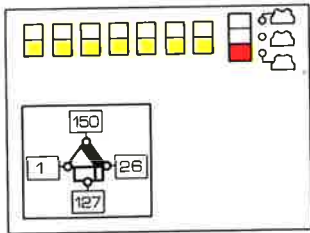


3-B

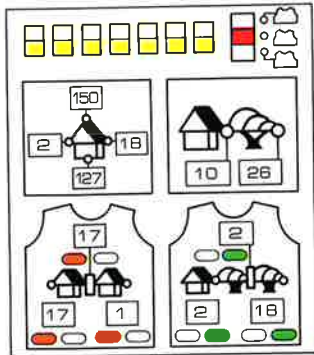
3-A ①



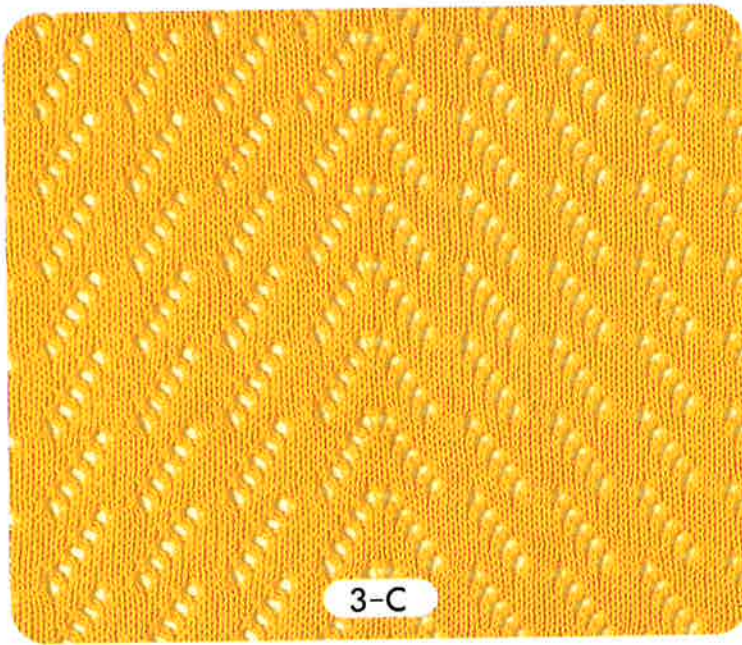
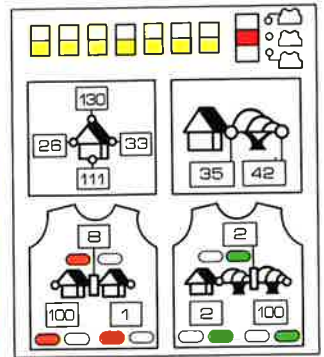
3-B ①



3-D ①

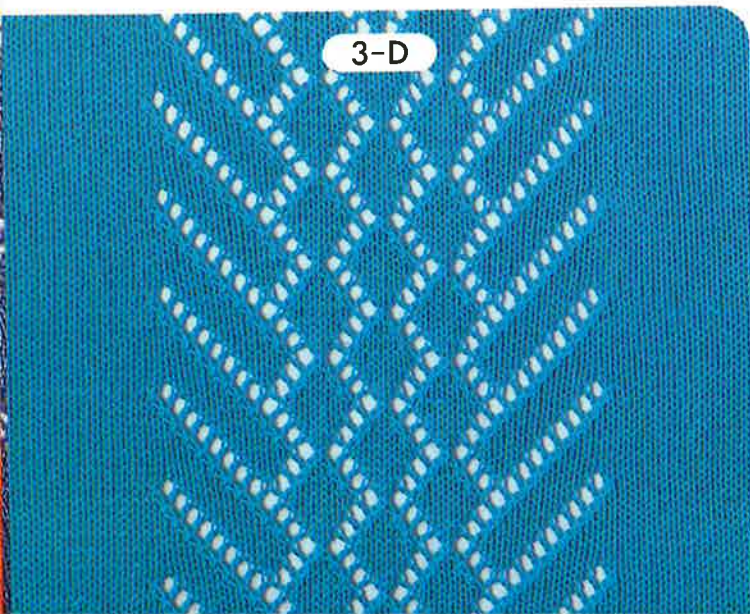
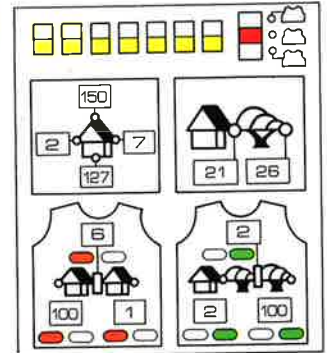


3-C ①

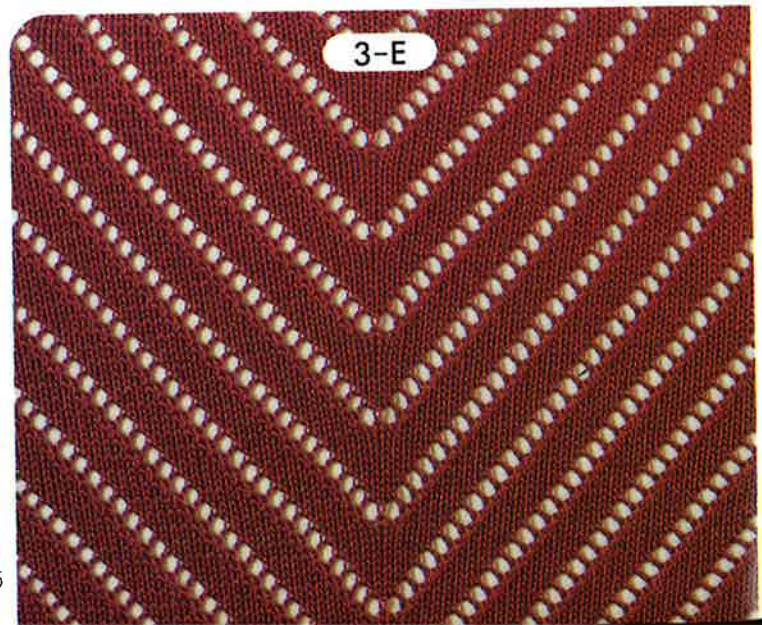


3-C

3-E ①

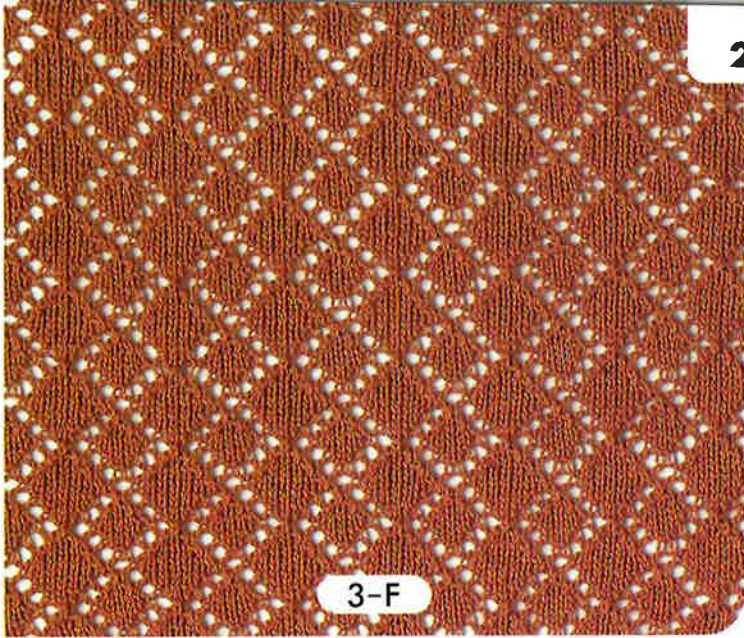


3-D



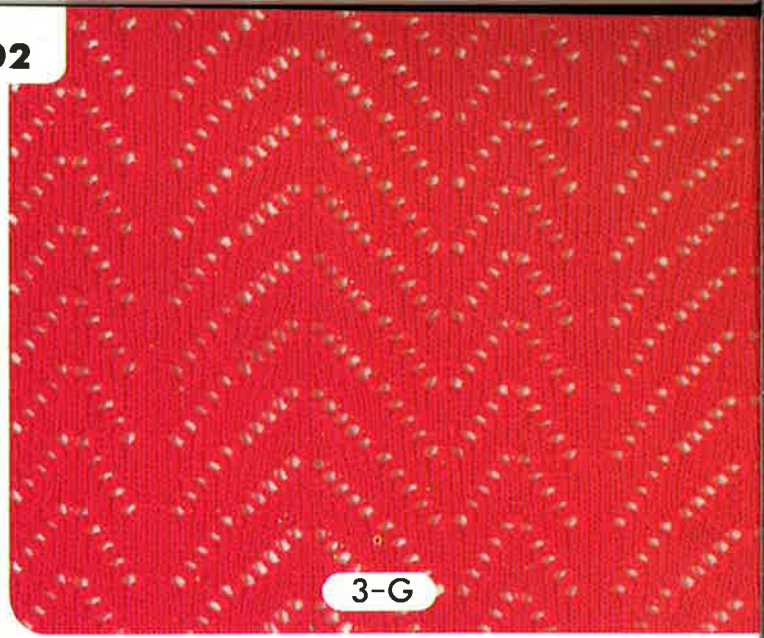
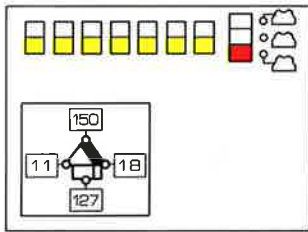
3-E





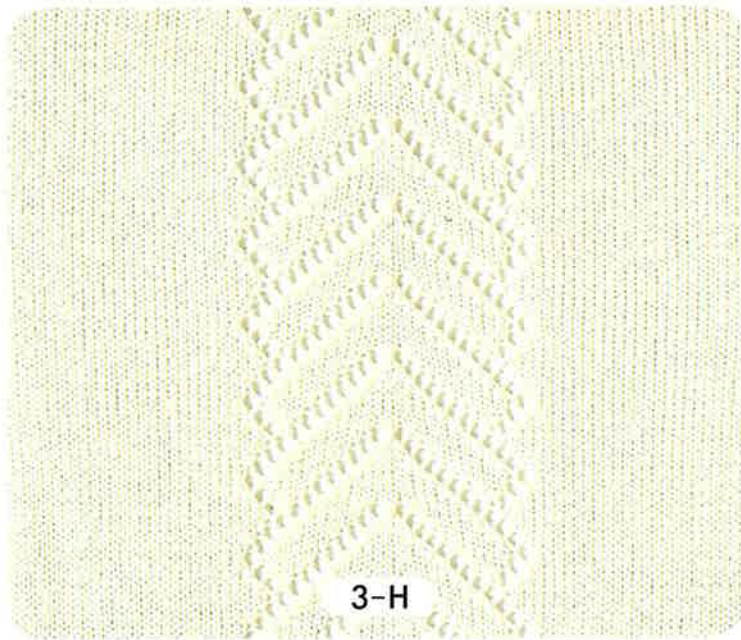
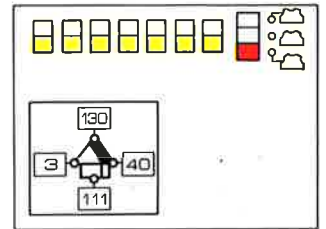
3-F

3-F ①



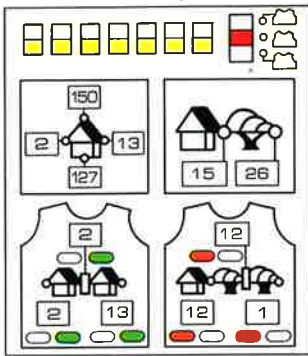
3-G

3-G ①

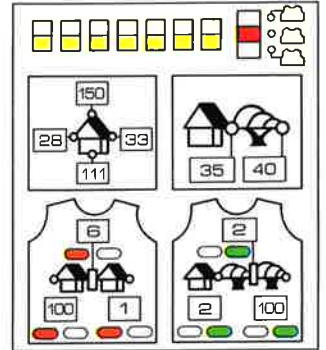


3-H

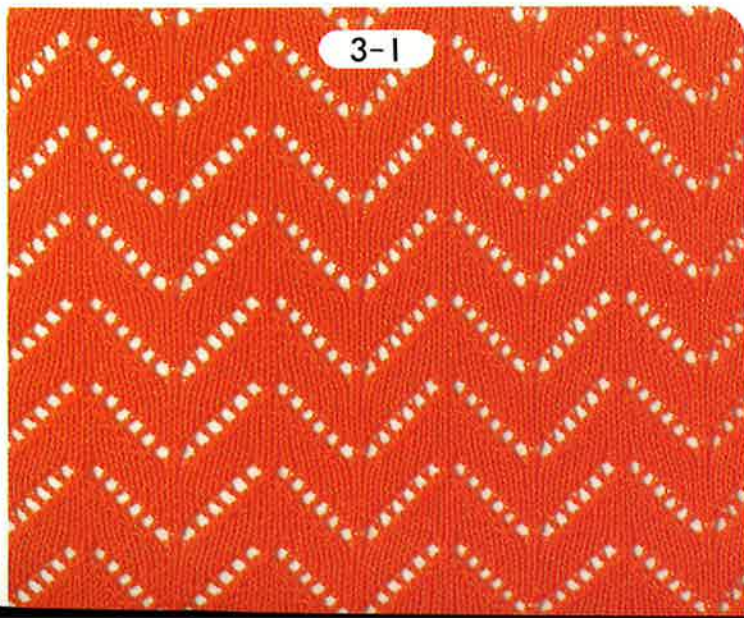
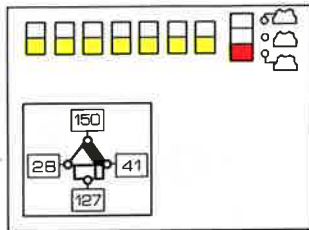
3-H ①



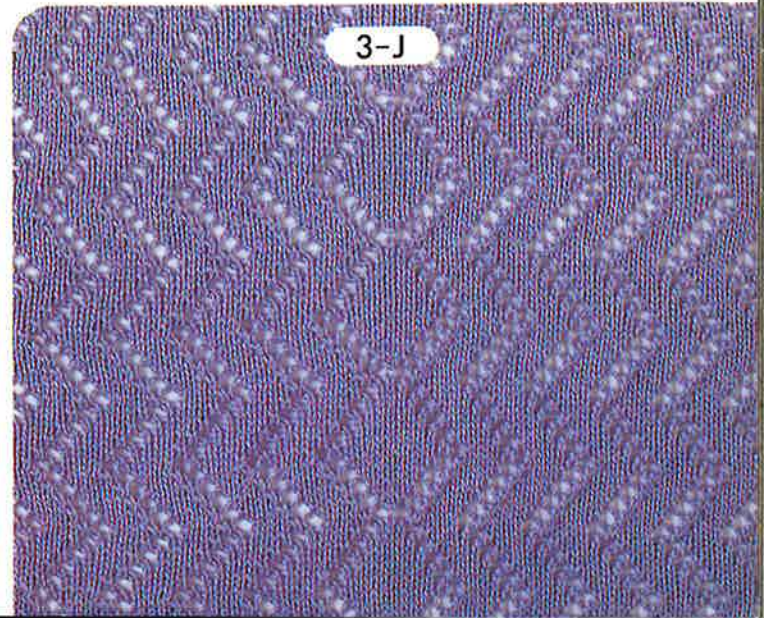
3-J ①



3-I ①

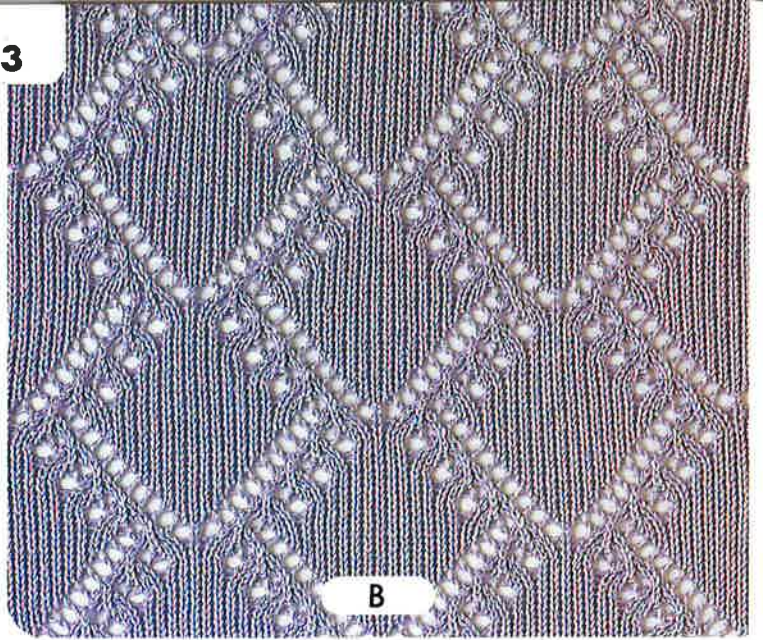
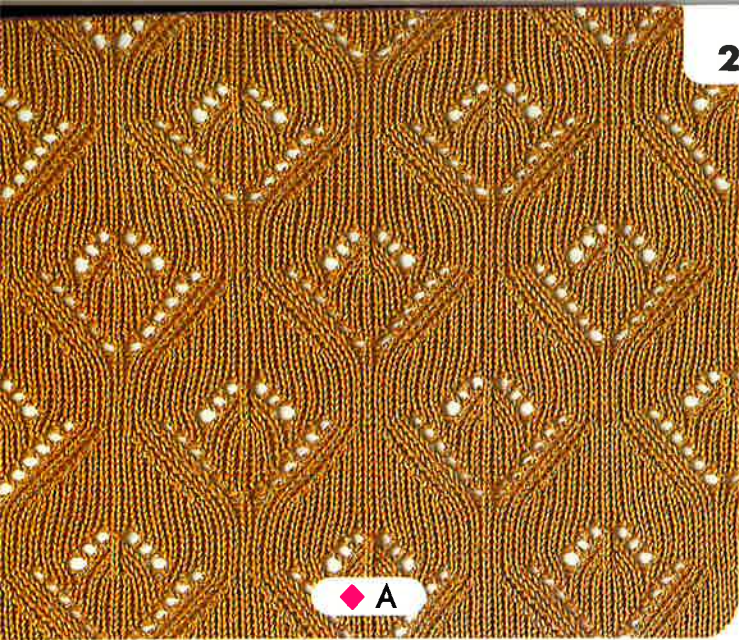


3-I

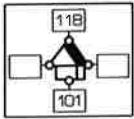


3-J

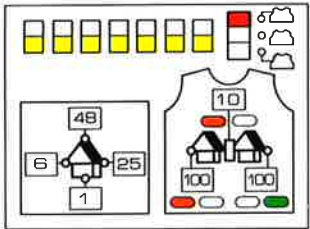




A ②

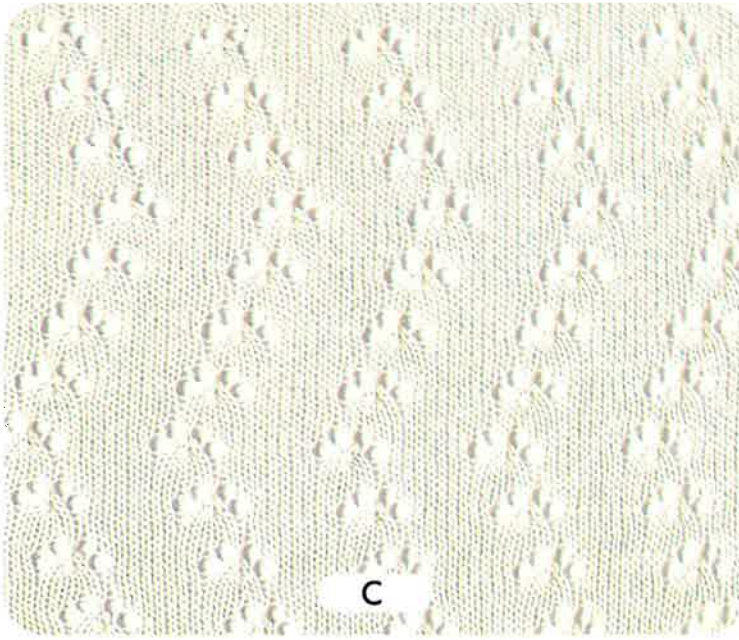


A ①

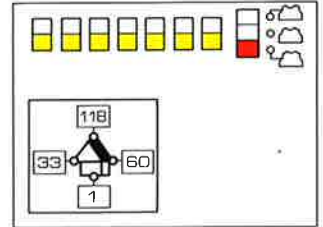


①・②で1模様。2模様めは基準位置黄色20にします(基準位置黄色10と20を交互)。模様の中に平編6段編みます。

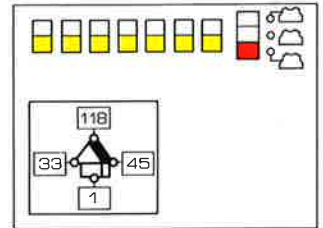
①+②=One complete pattern  
Alternate F.N.P. 10 with 20.  
(F.N.P.: First Needle Position)  
Knit 6 rows with Plain stitch between patterns.



B ①



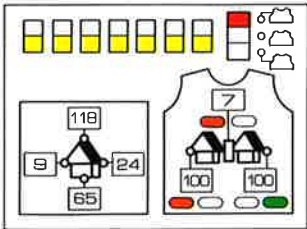
C ①



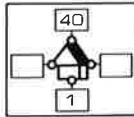
L欄と模様欄の間の数字6は平編で6段編みます。

Knit 6 rows with Plain stitch when "6" is indicated beside the "L-WINDOW".

D ①



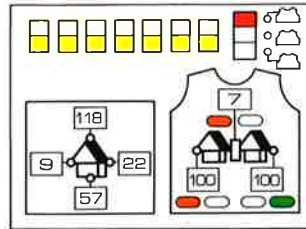
D ②



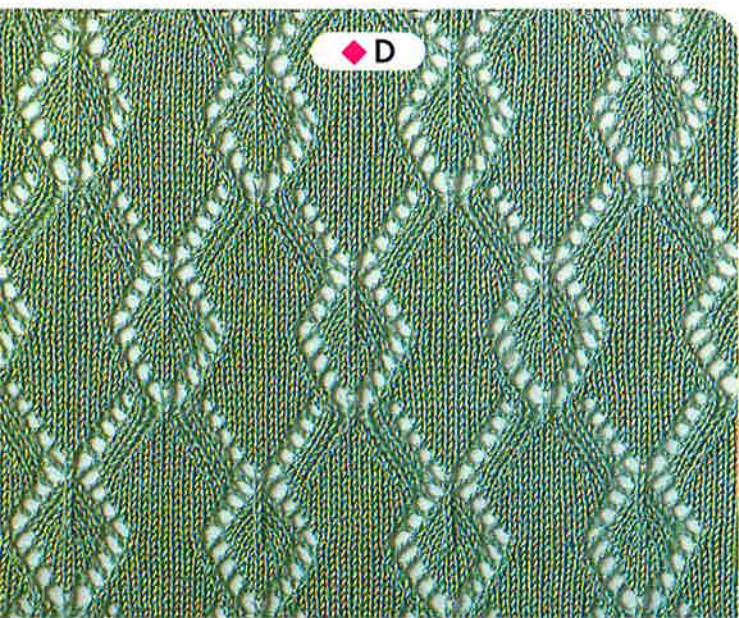
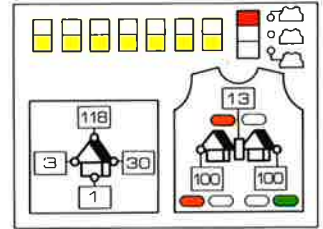
①・②で1模様。2模様めは基準位置黄色15にします(基準位置黄色7と15を交互)。

①+②=One complete pattern  
Alternate F.N.P. 7 with 15.

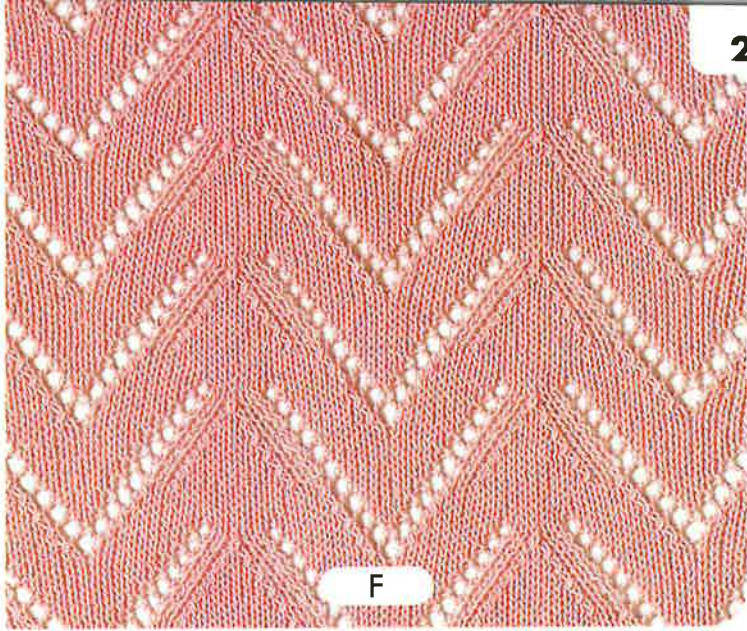
E ①



E ②

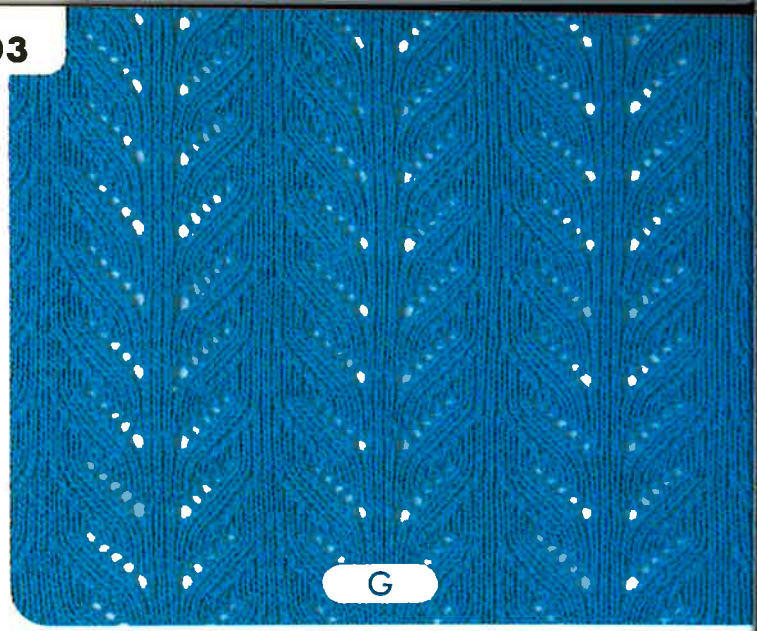
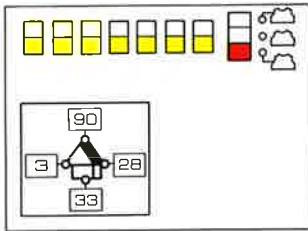






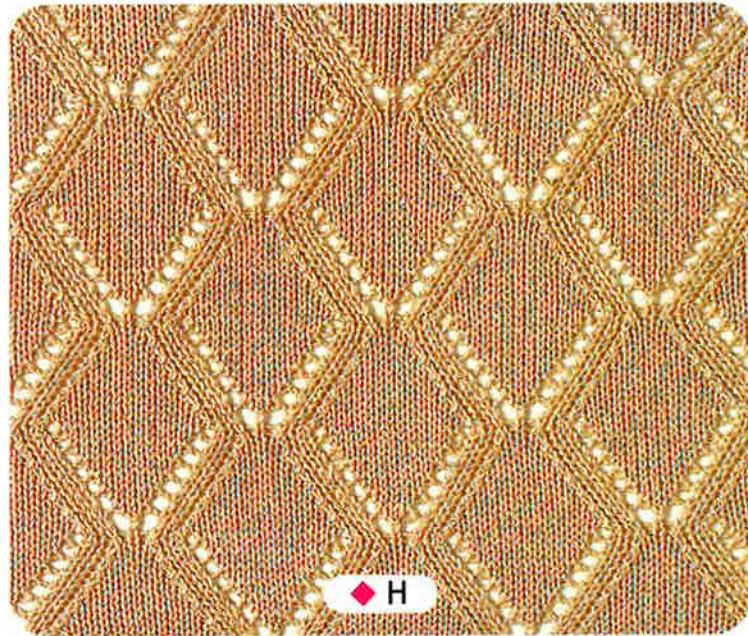
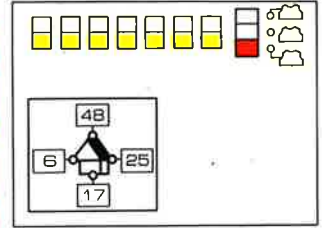
F

F ①



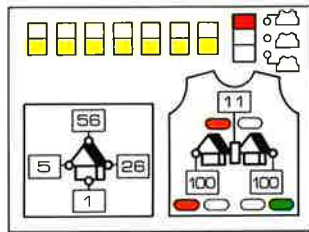
G

G ①



H

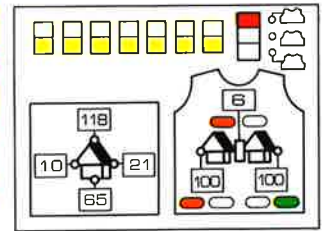
H ①



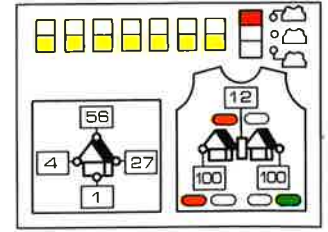
H ②



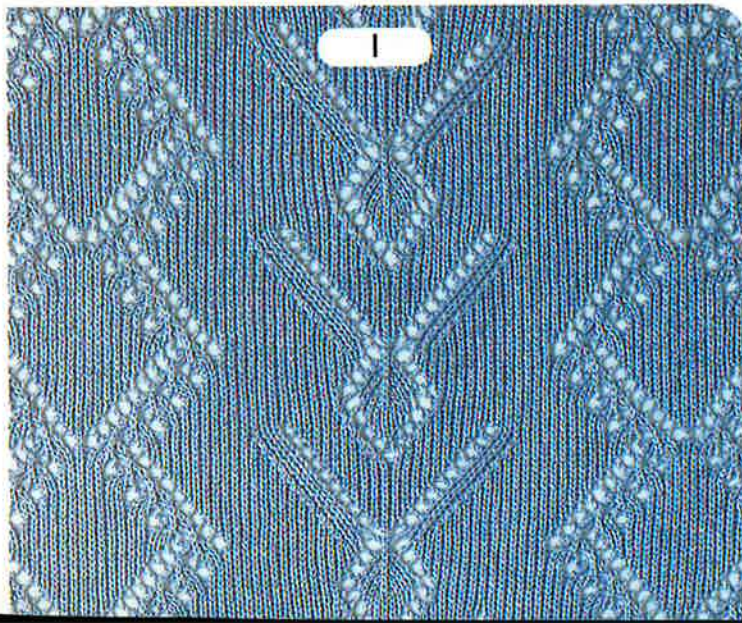
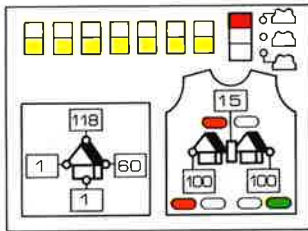
J ②



J ①



I ①

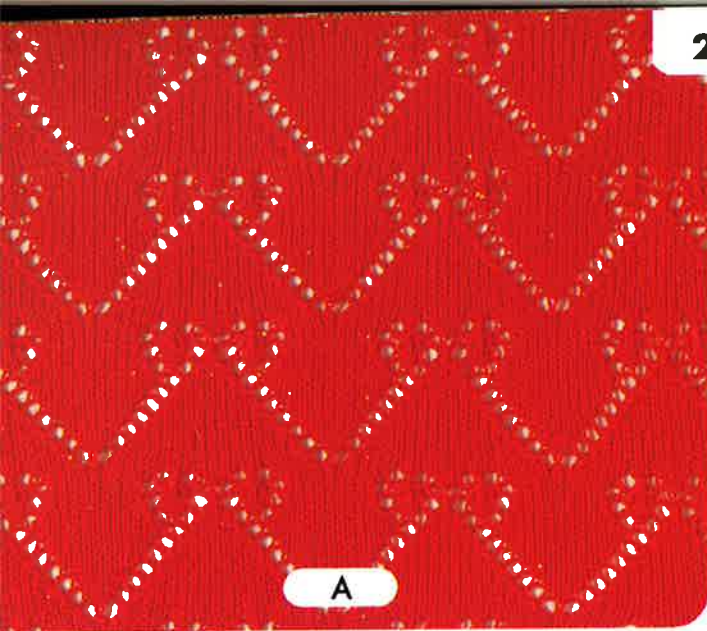


I



J

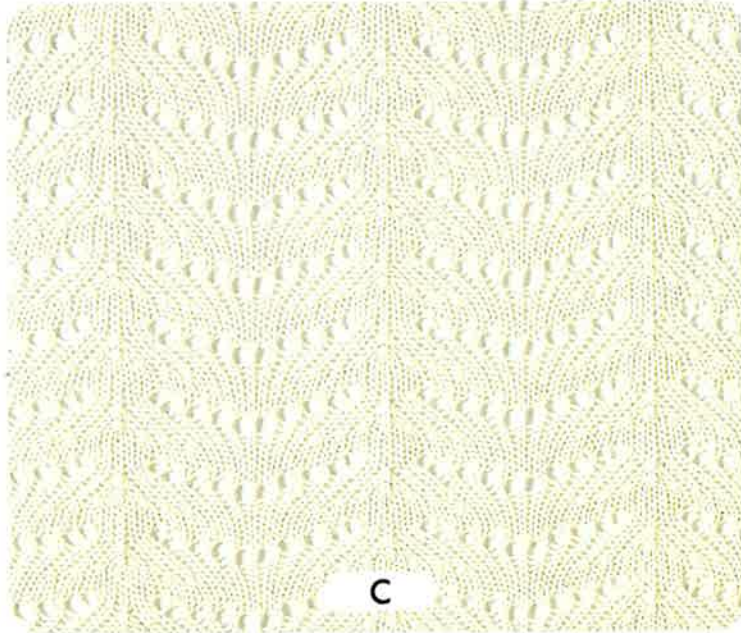
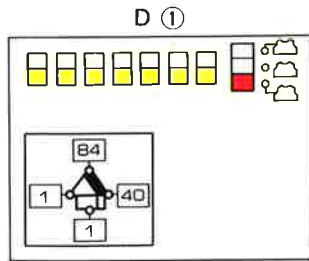
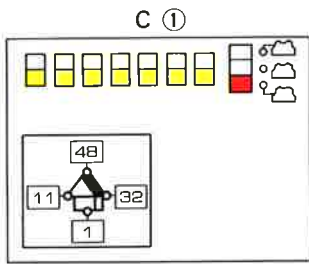
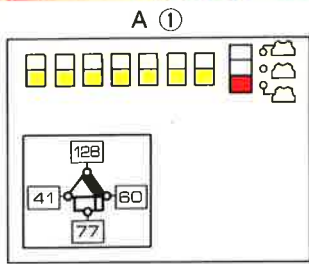




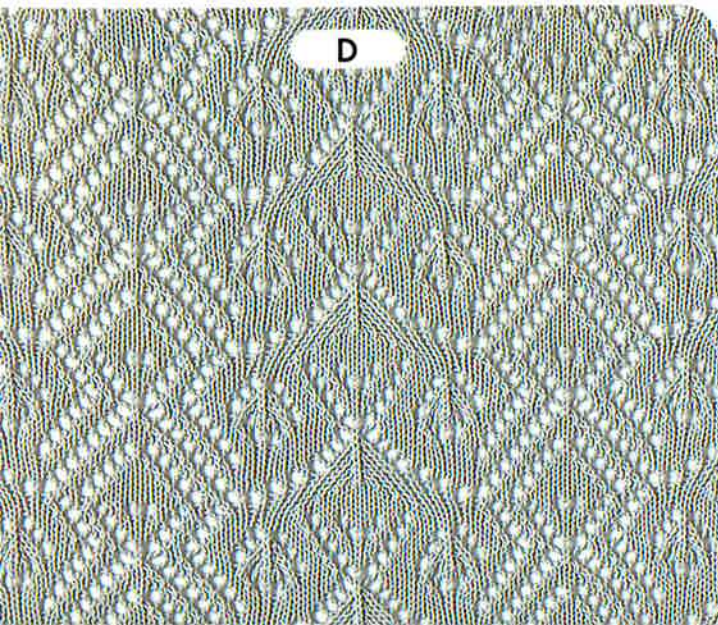
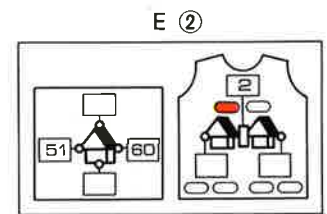
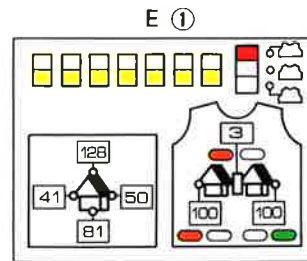
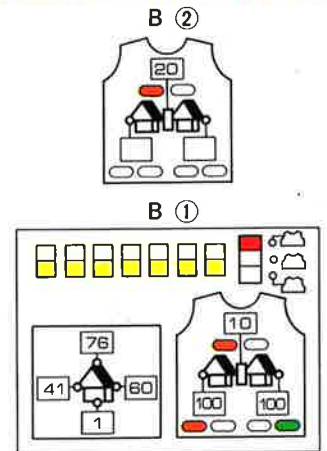
A



B



C

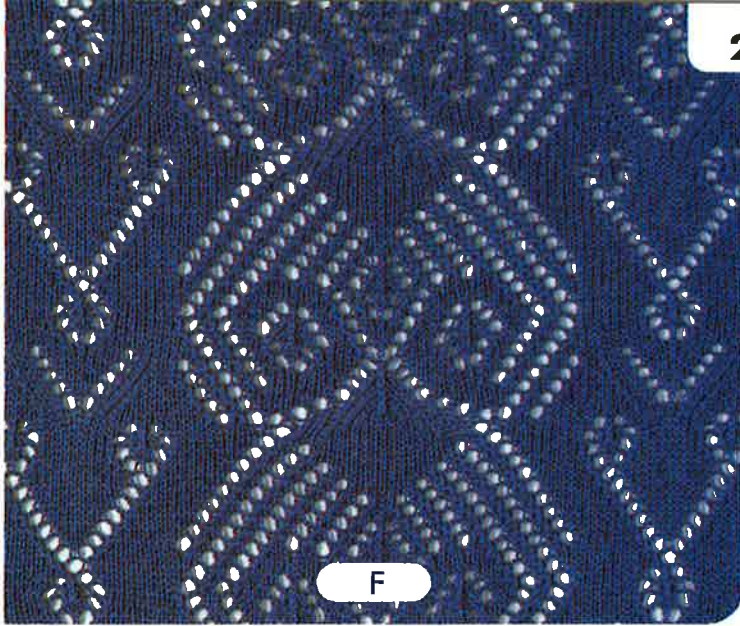


D

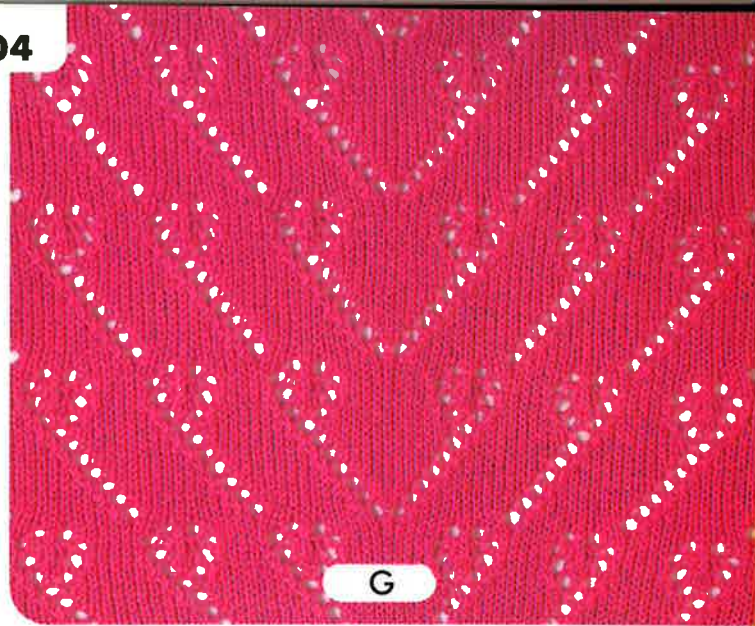


E



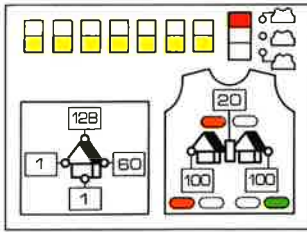


F

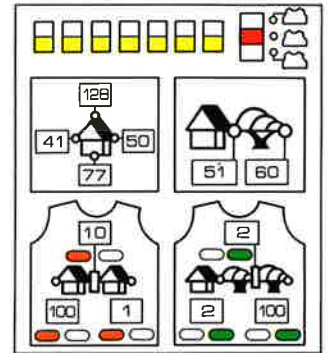


G

F ①

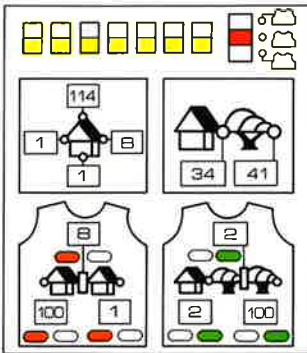


G ①



H

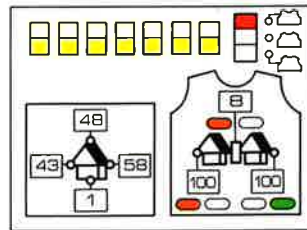
I ①



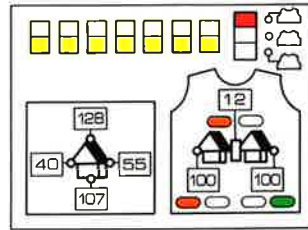
J ②



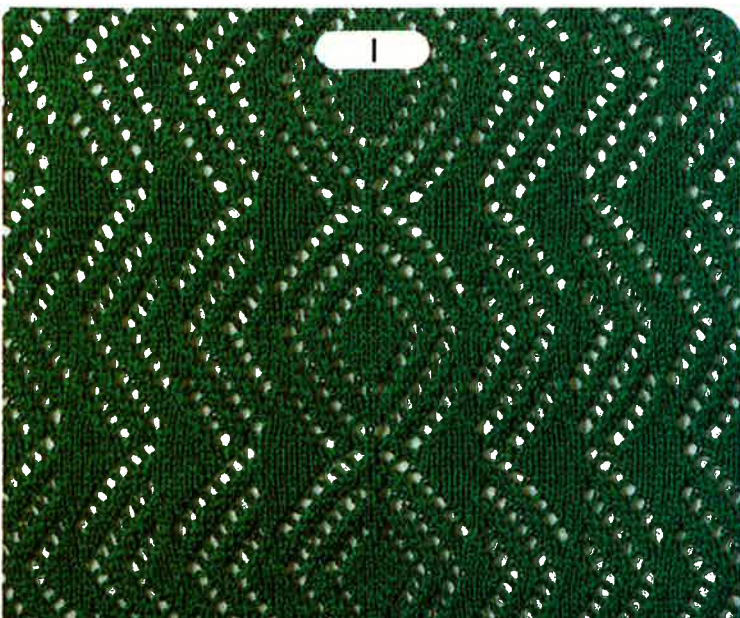
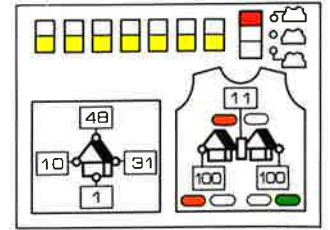
H ①



H ②



J ①

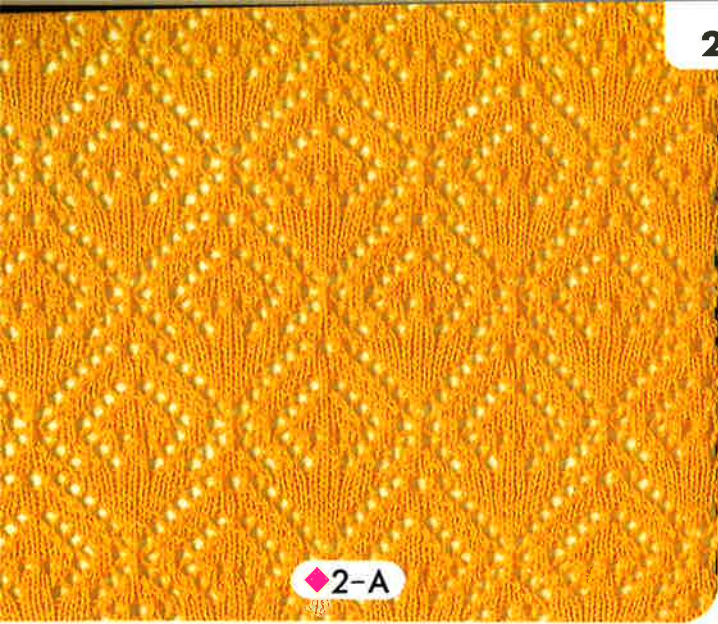


I

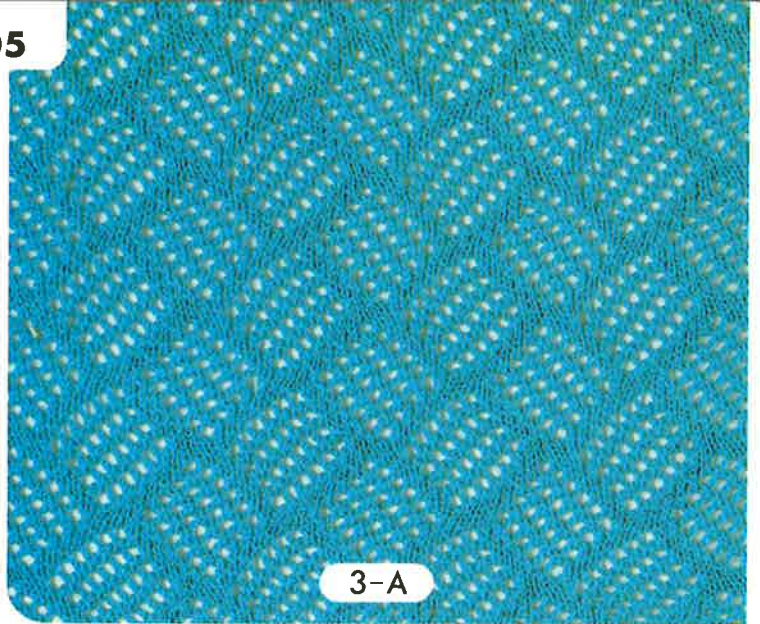


J



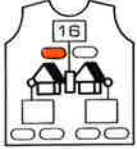


◆ 2-A

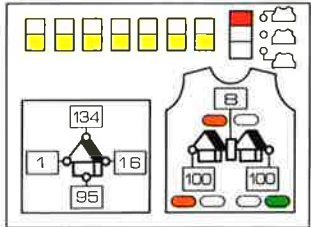


3-A

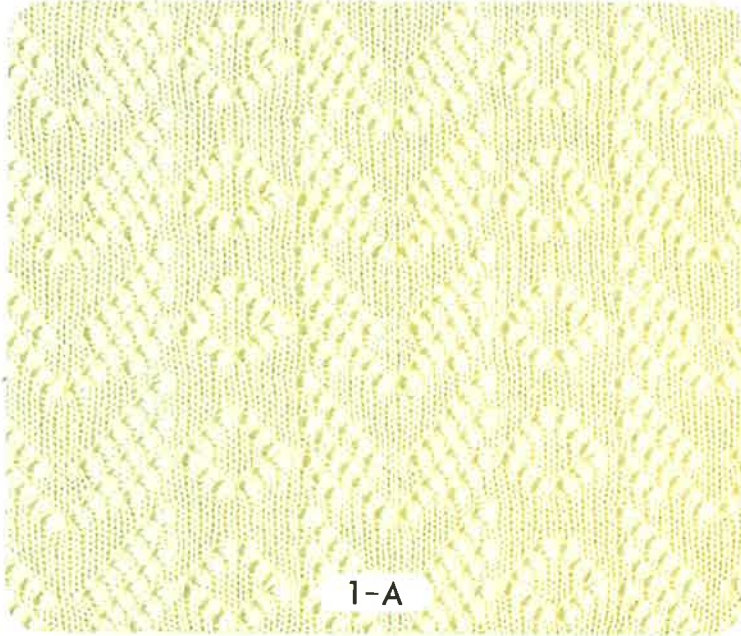
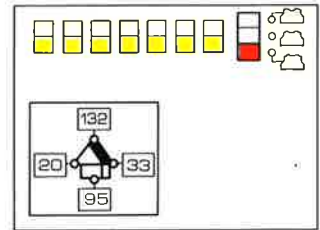
2-A ②



2-A ①

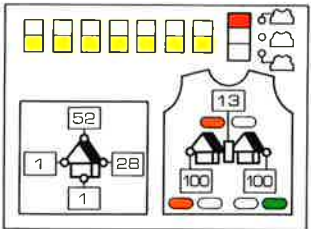


3-A ①

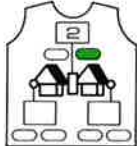


1-A

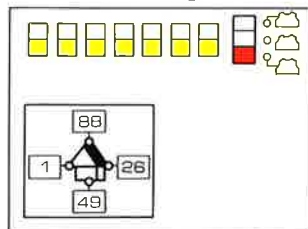
1-B ①



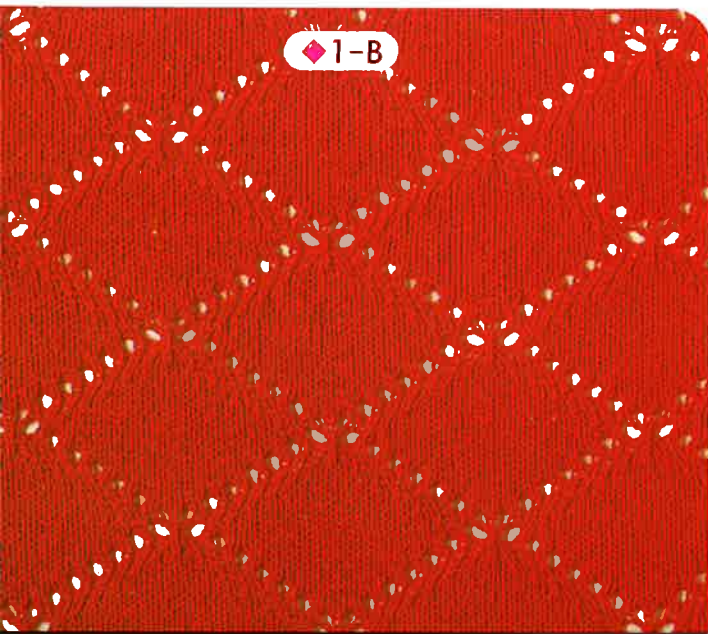
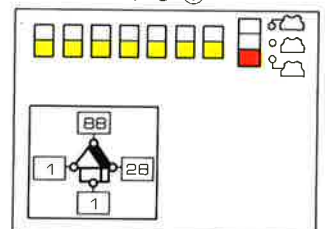
1-B ②



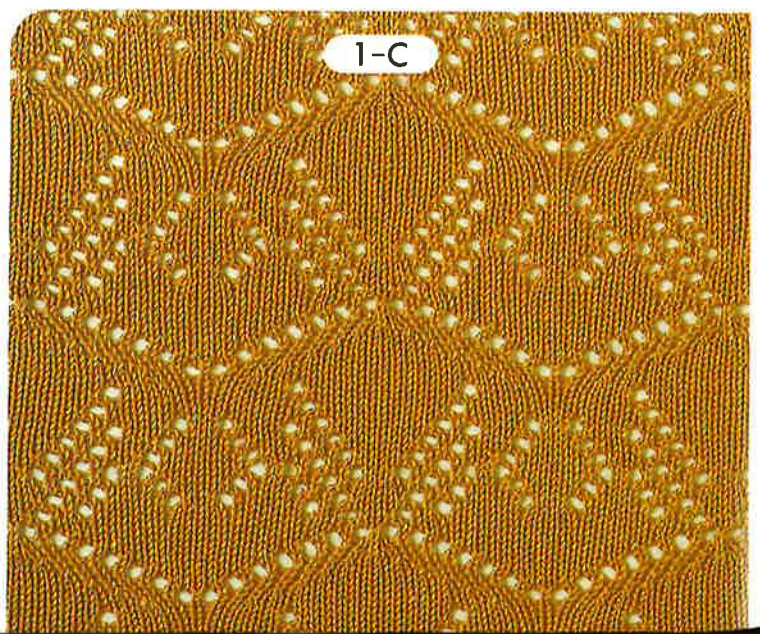
1-A ①



1-C ①

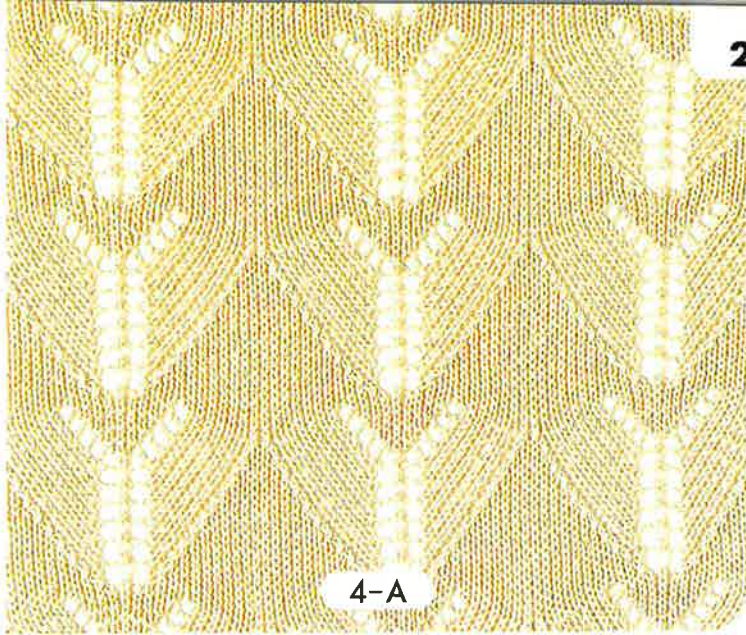


◆ 1-B

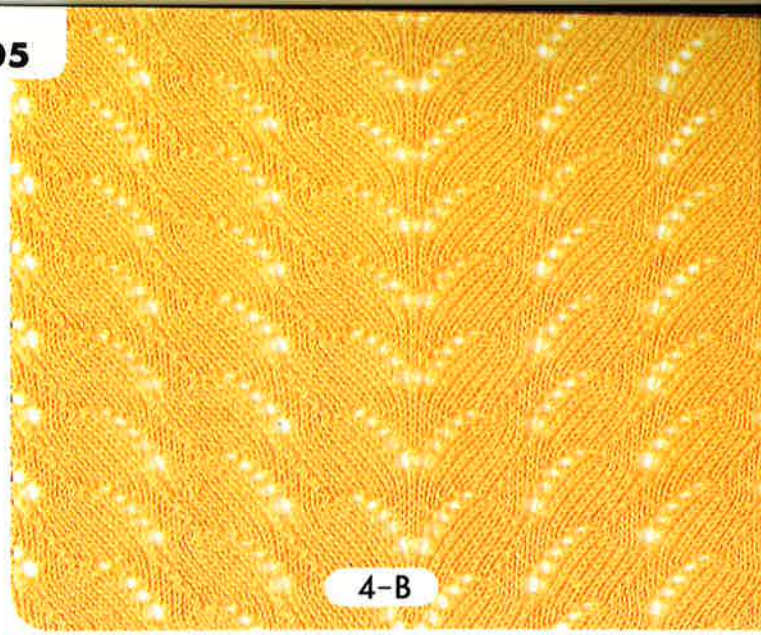


1-C



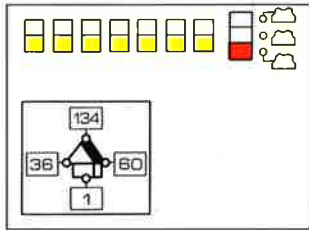


4-A

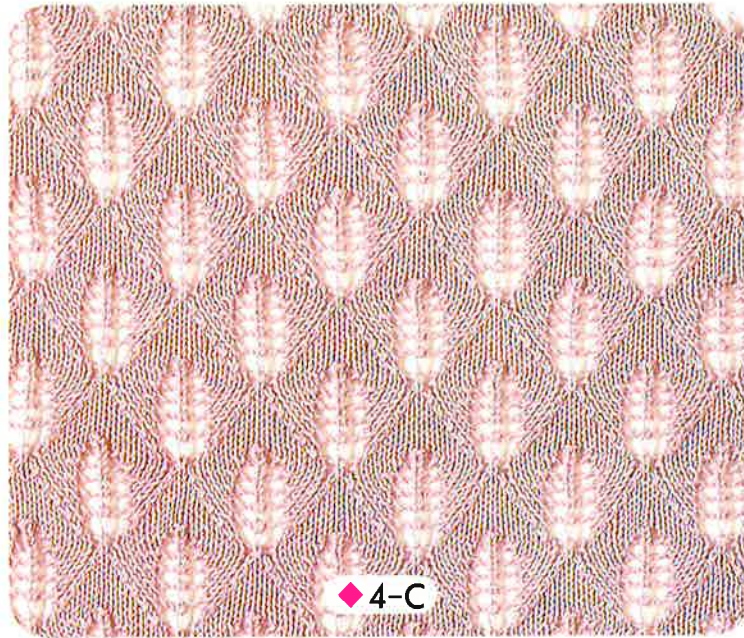
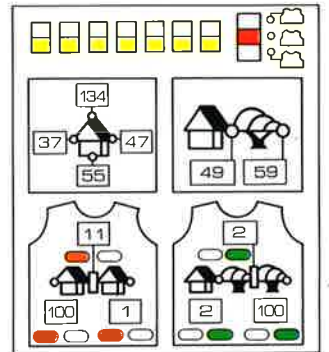


4-B

4-A ①

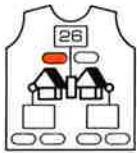


4-B ①



◆ 4-C

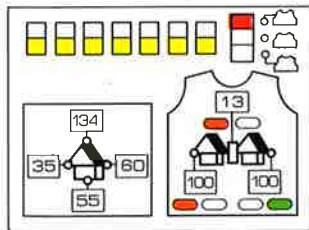
4-D ②



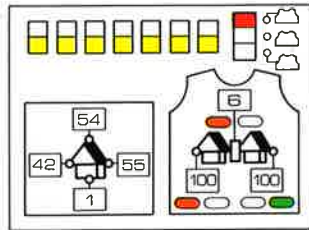
4-E ②



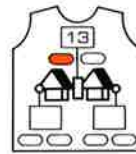
4-D ①



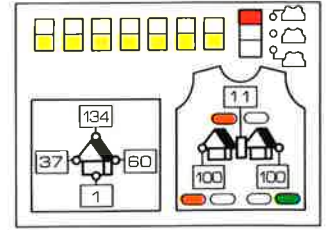
4-C ①



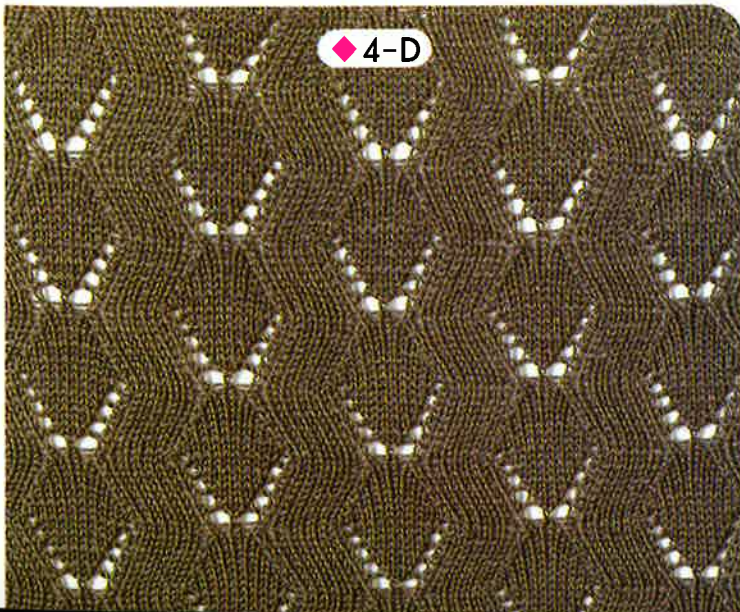
4-C ②



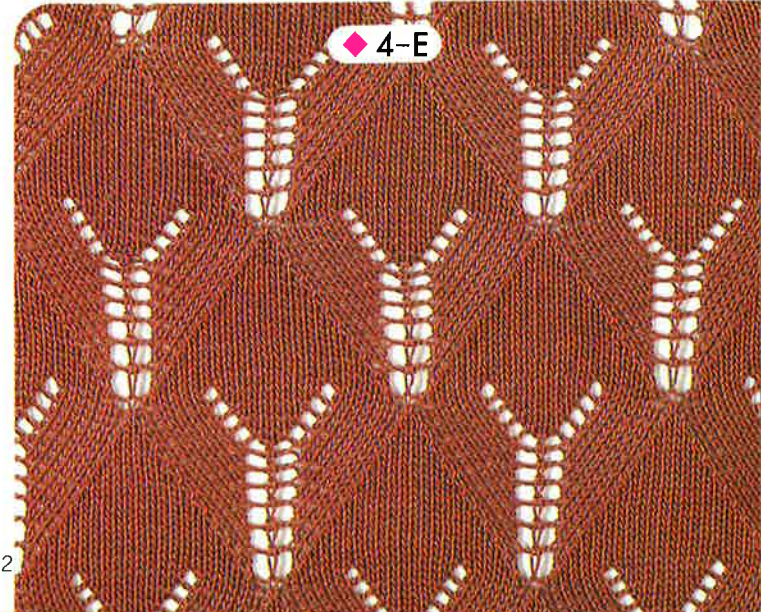
4-E ①



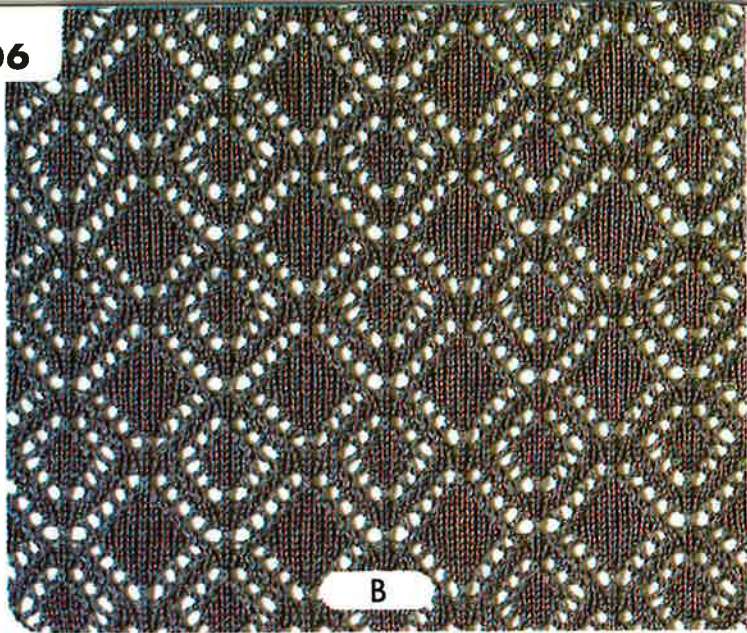
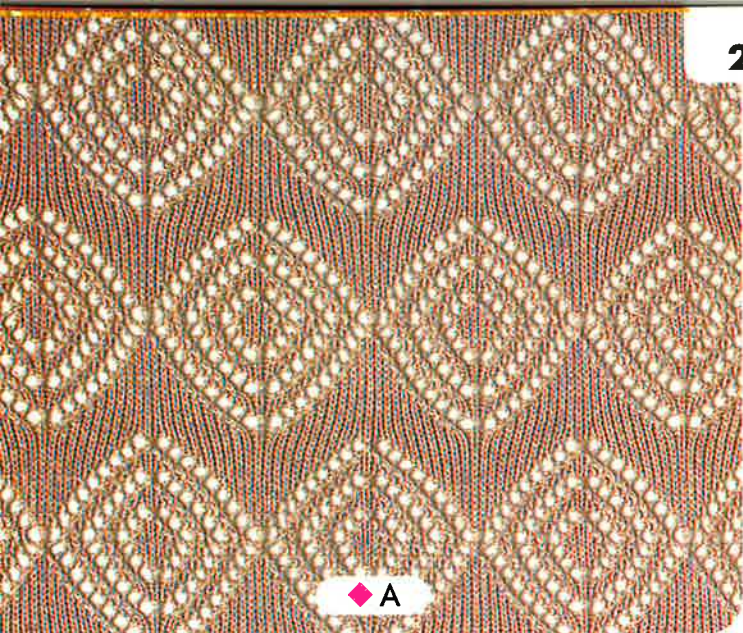
◆ 4-D



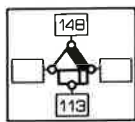
◆ 4-E



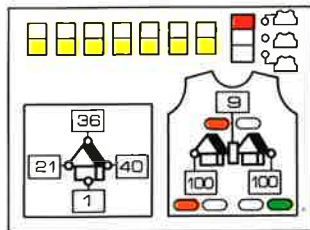




A ②

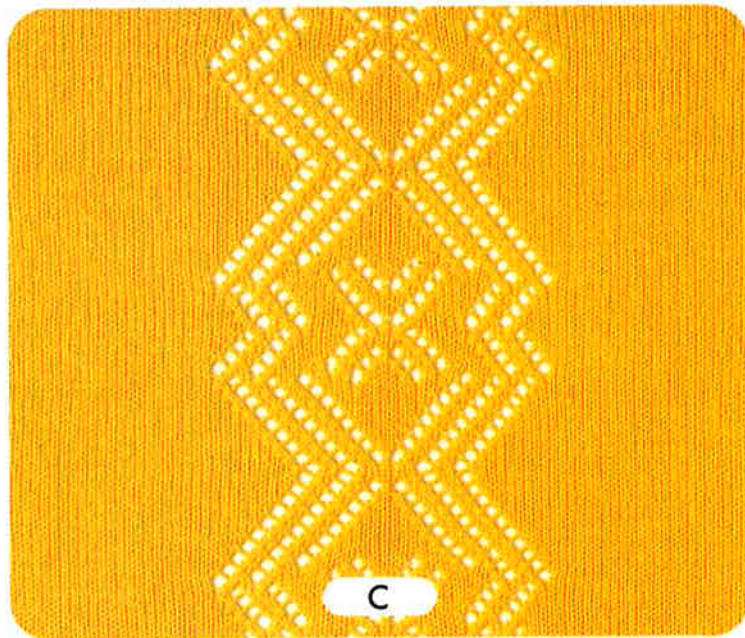


A ①

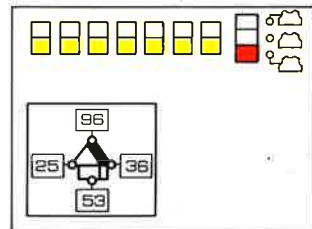


①・②で1模様。2模様めは基準位置黄色19にします(基準位置黄色9と19を交互)。

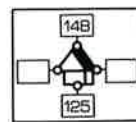
①+②= One complete pattern  
Alternate F.N.P. 9 with 19.  
Knit 8 rows with Plain stitch  
between patterns.



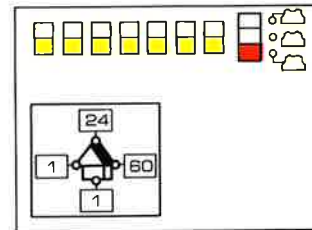
B ①



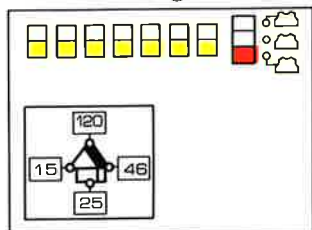
E ②



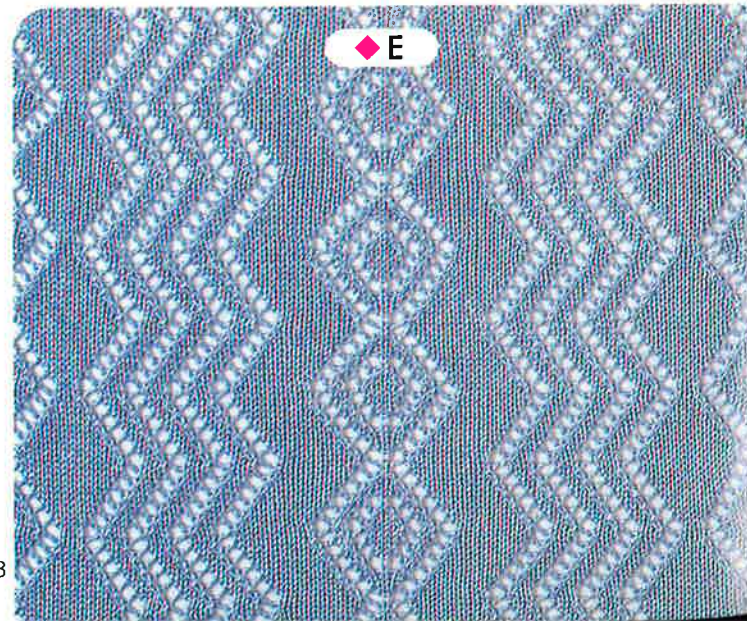
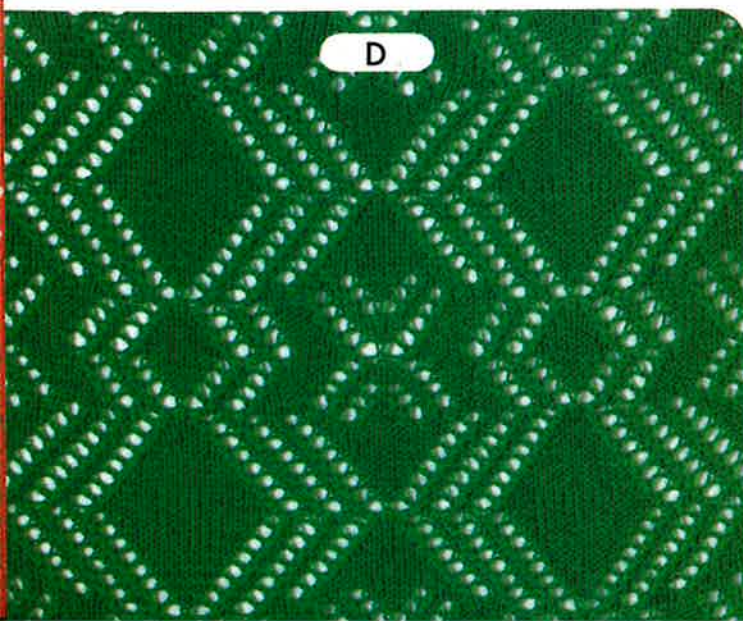
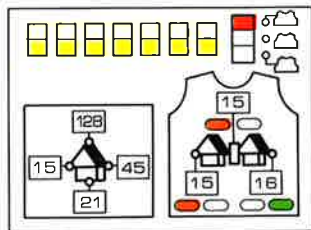
E ①



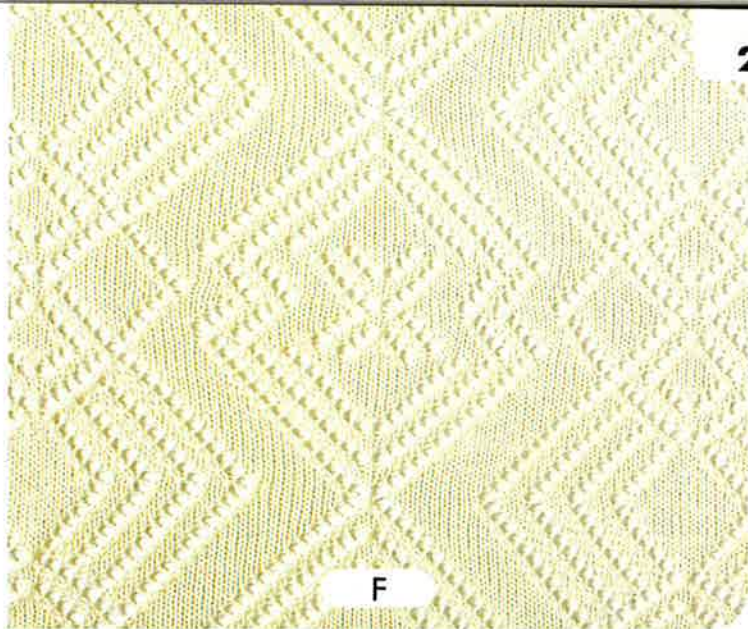
D ①



C ①

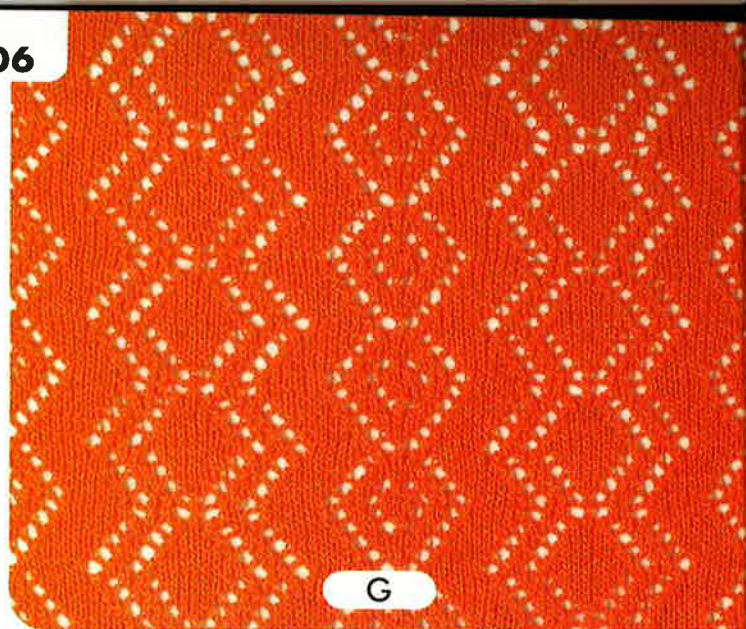
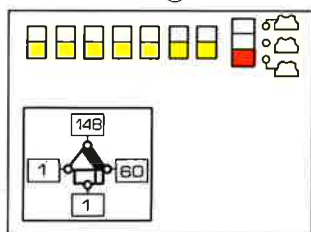






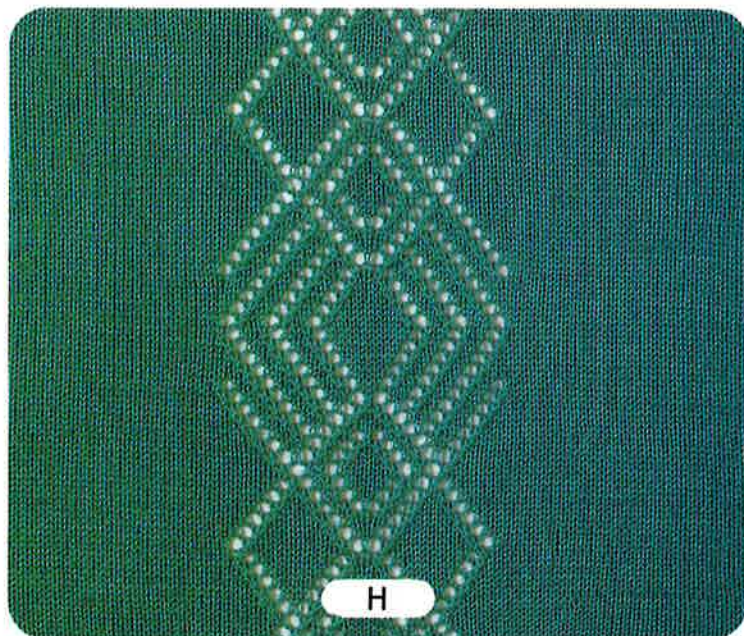
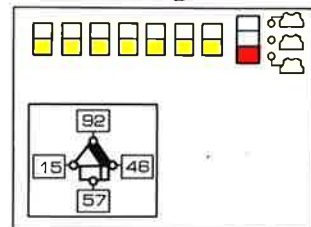
F

F ①



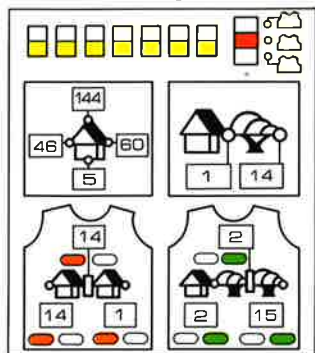
G

G ①

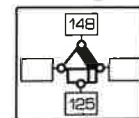


H

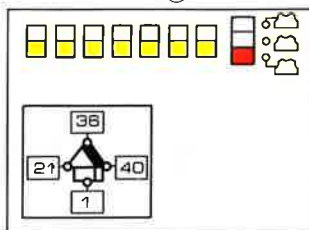
H ①



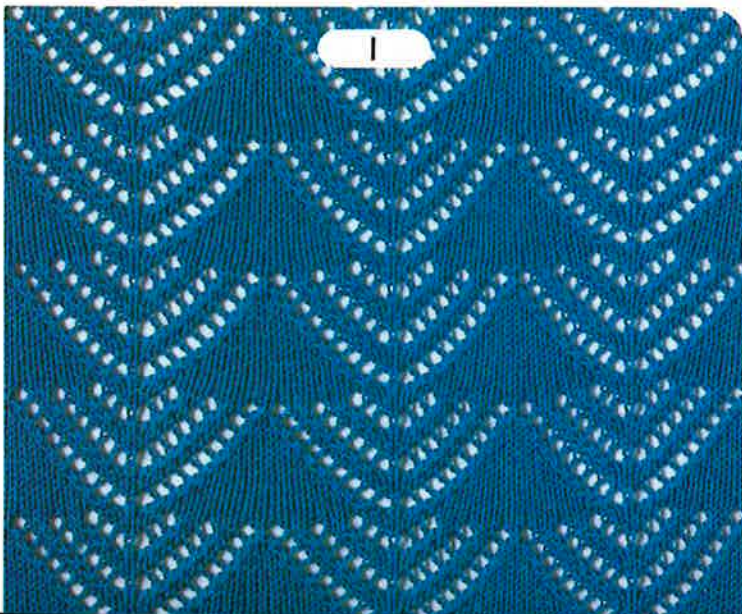
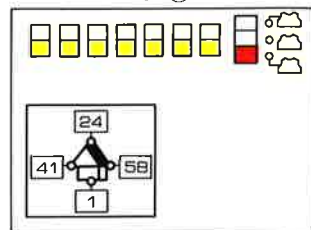
J ②



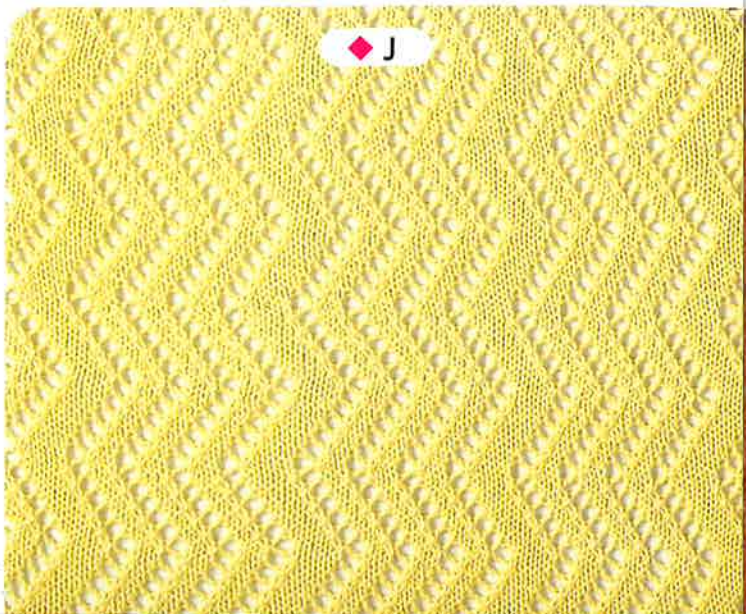
I ①



J ①

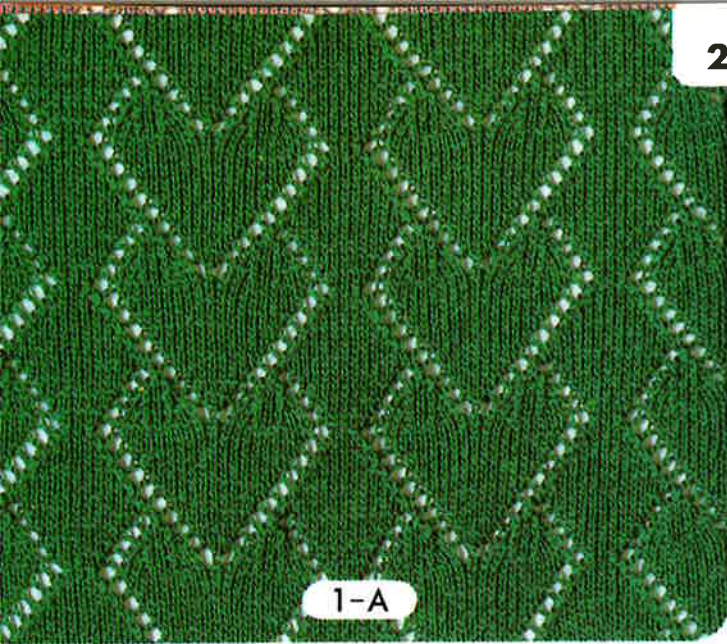


I

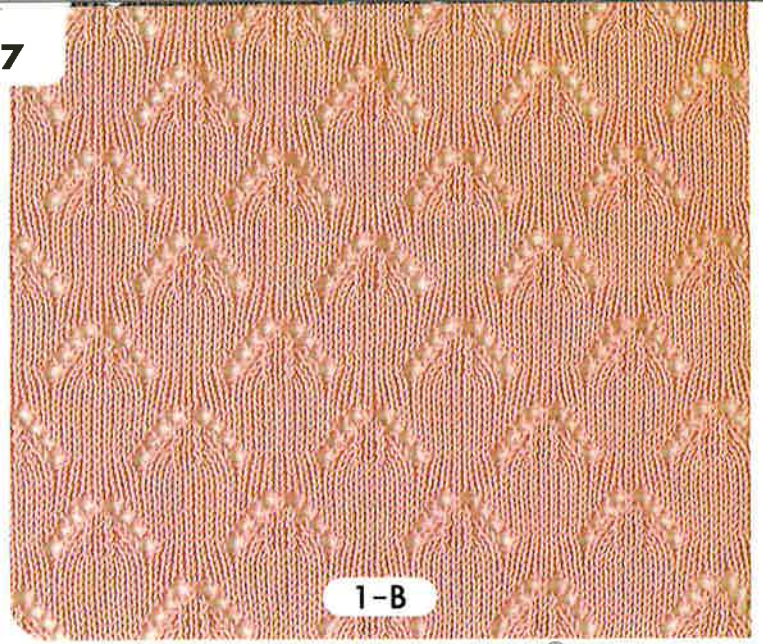


J

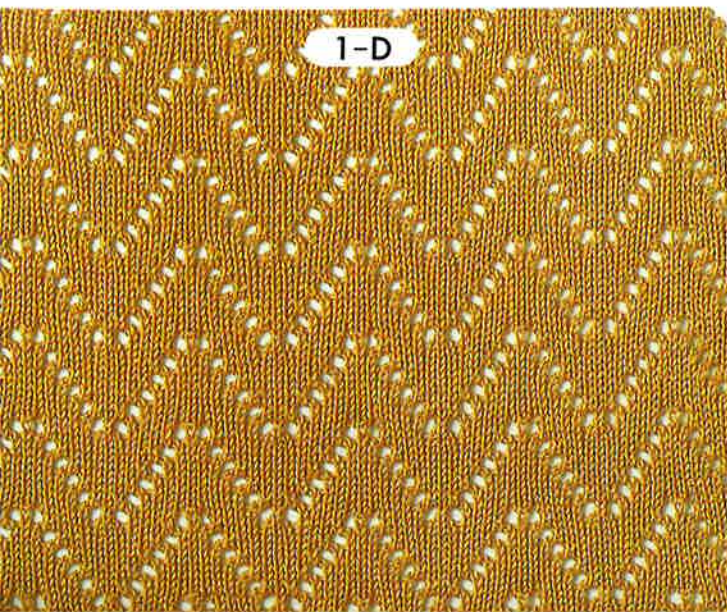
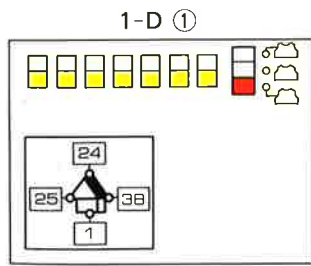
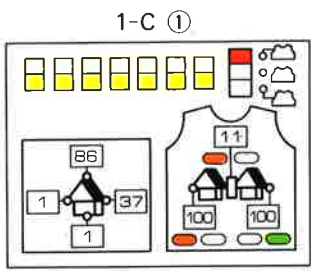
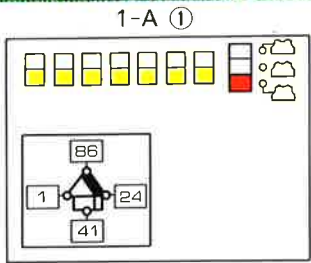




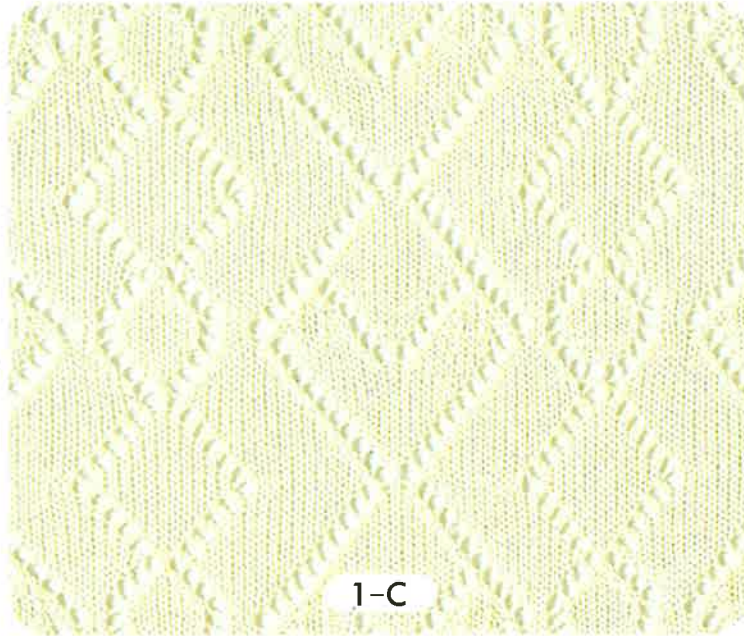
1-A



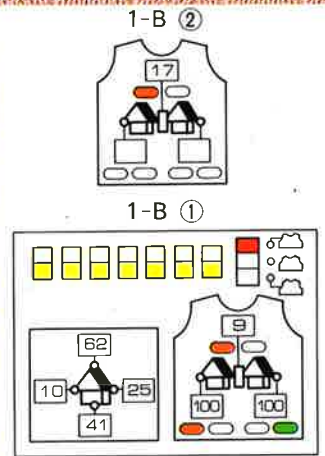
1-B



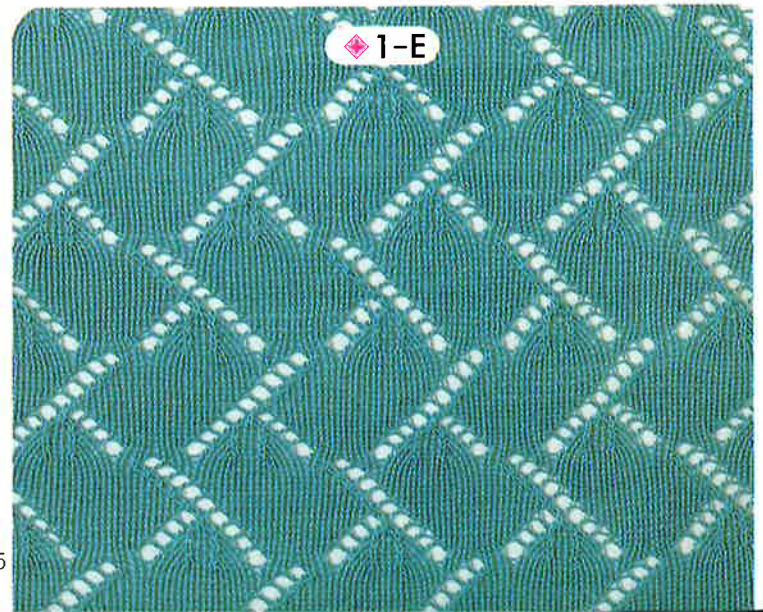
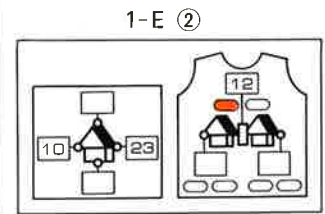
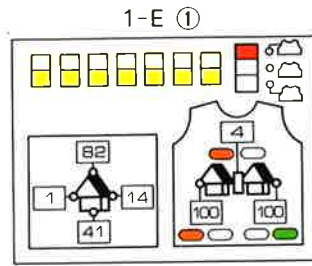
1-D



1-C

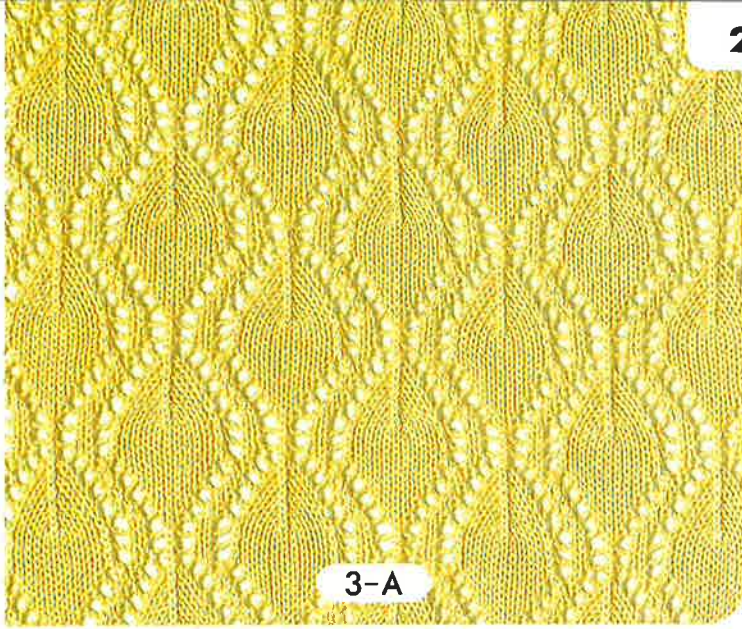


模様の上に平編 6 段編みます。  
Knit 6 rows with Plain stitch  
between patterns.

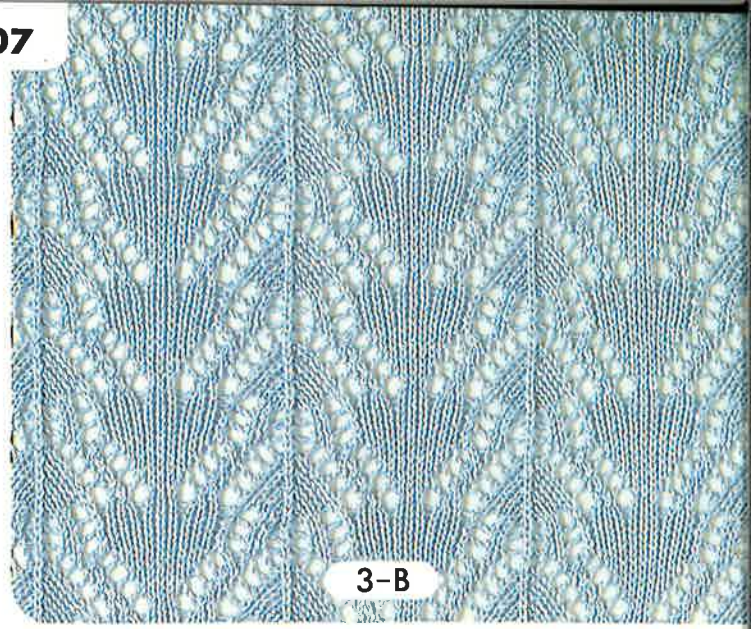


1-E



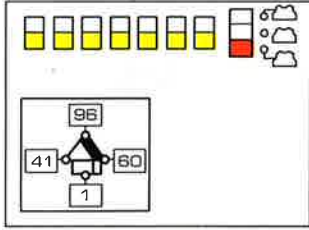


3-A

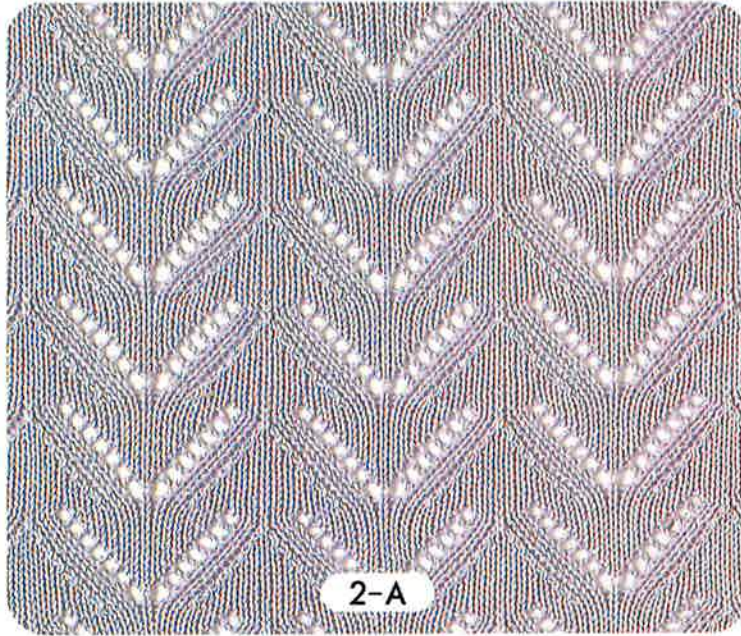
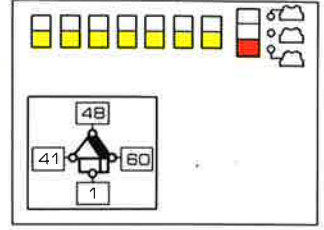


3-B

3-A ①

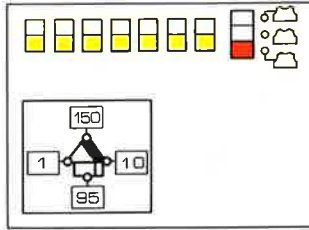


3-B ①

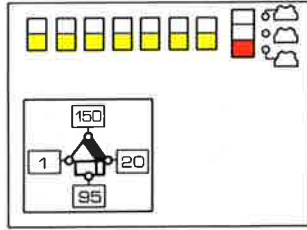


2-A

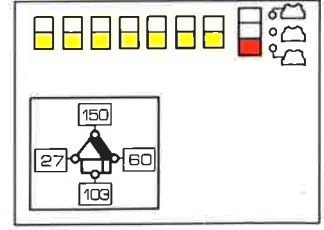
2-B ①



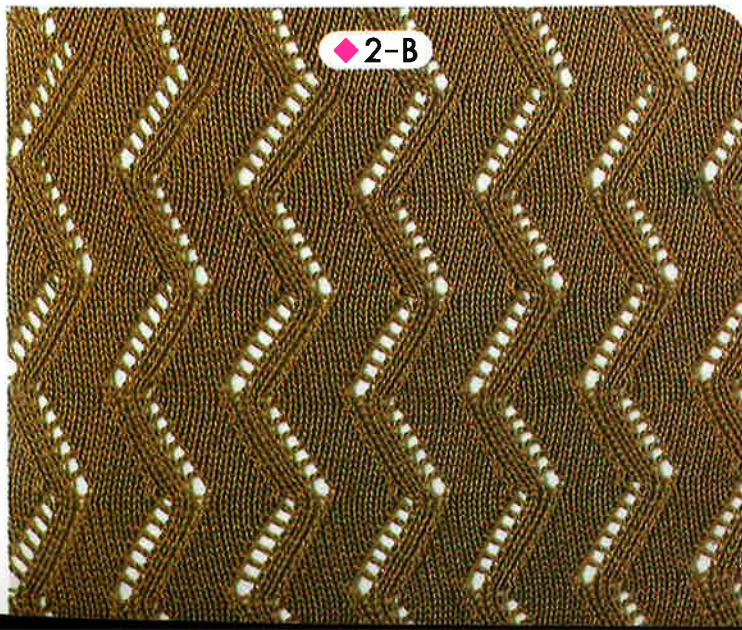
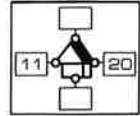
2-A ①



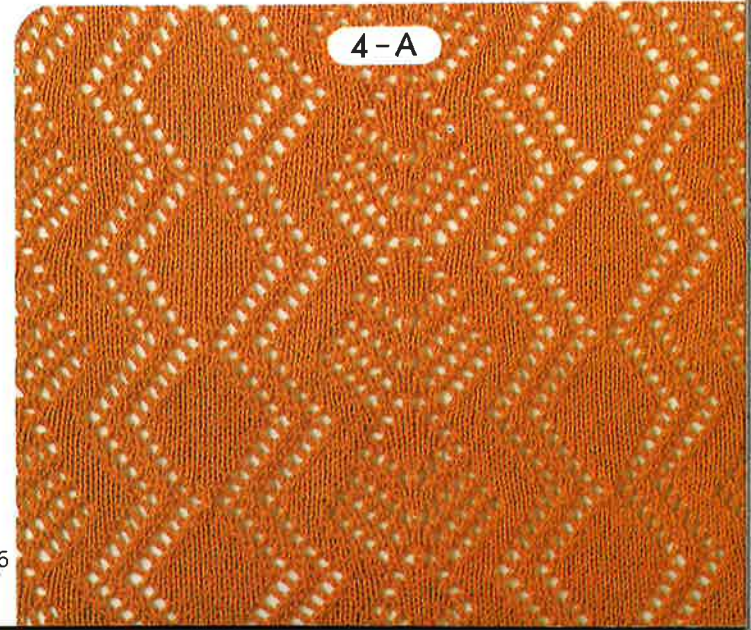
4-A ①



2-B ②

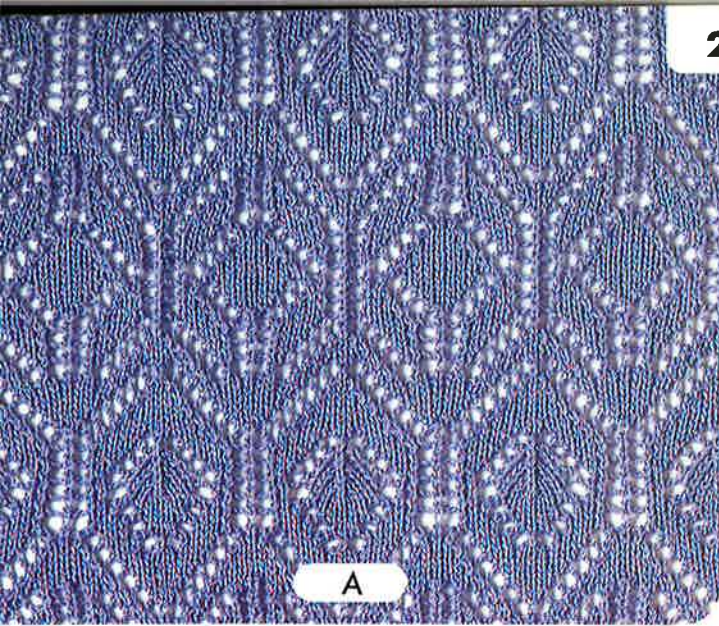


2-B



4-A



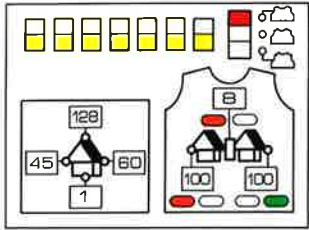


A

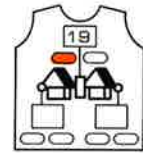


B

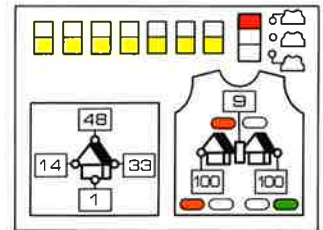
A ①



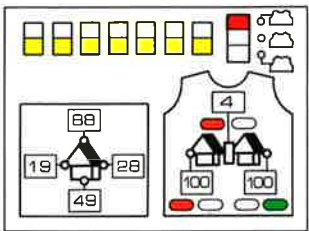
B ②



B ①

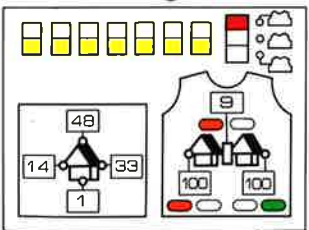


D ②

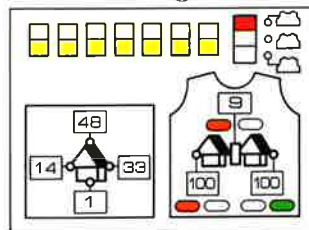


C

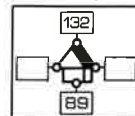
D ①



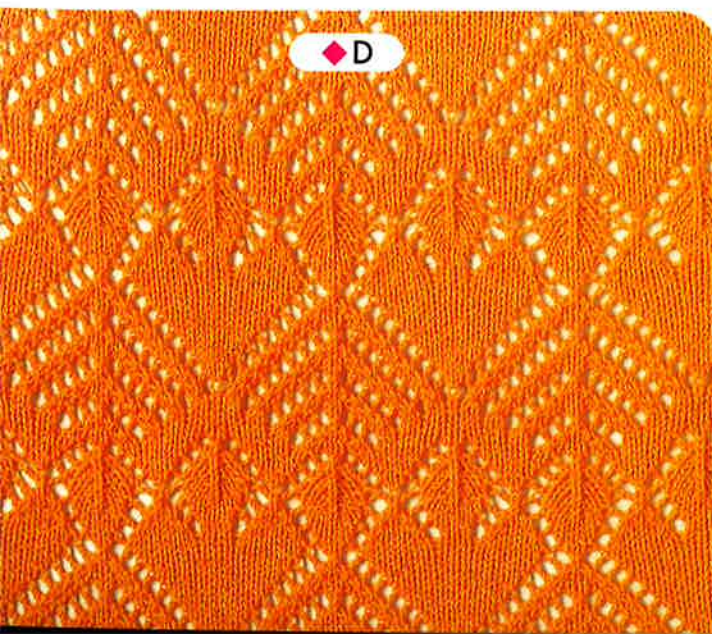
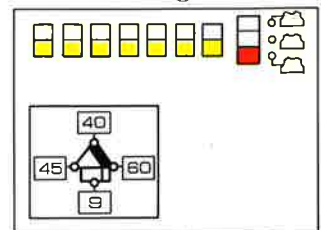
C ①



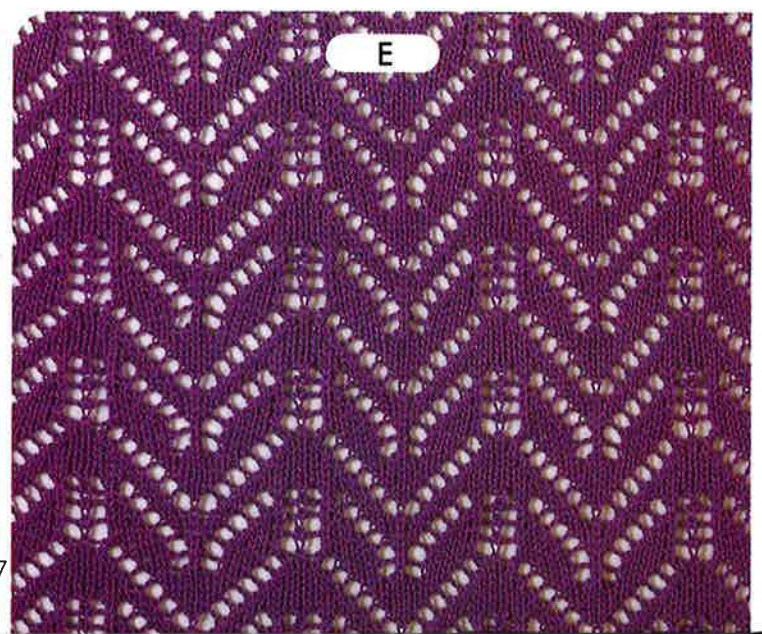
C ②



E ①

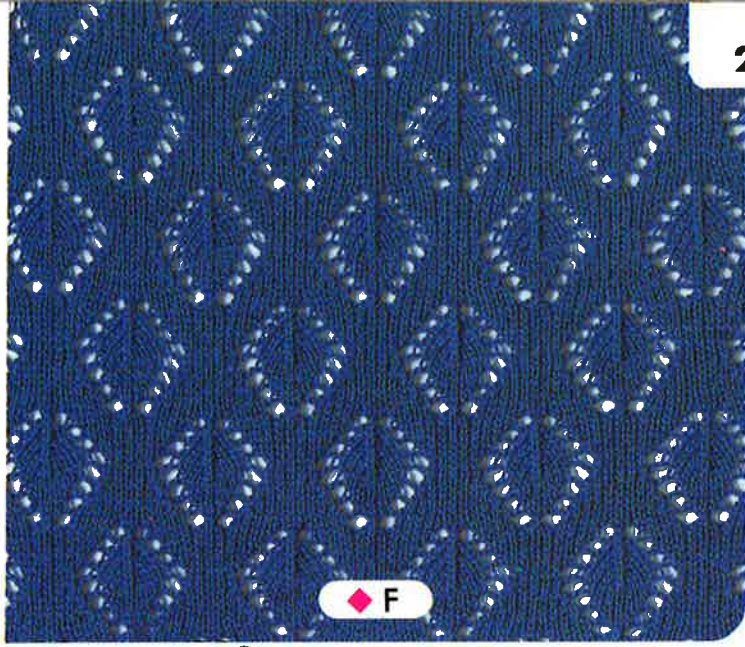


D



E



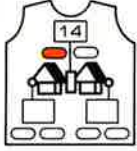


F

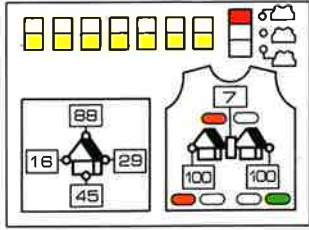


G

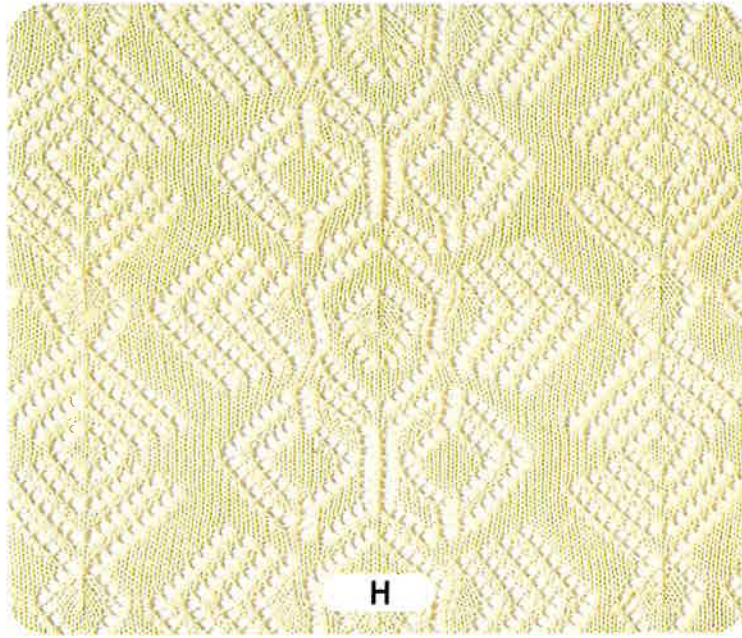
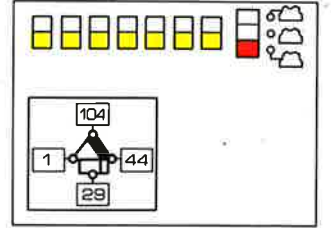
F ②



F ①

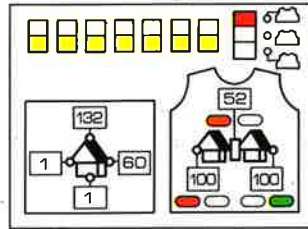


G ①

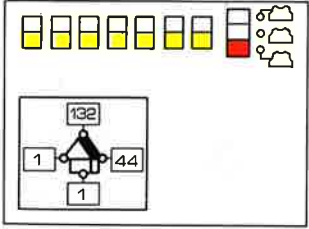


H

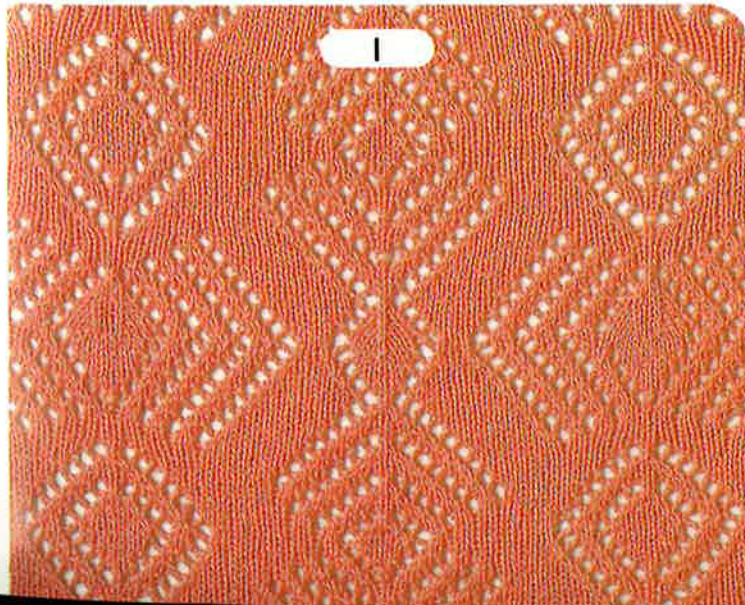
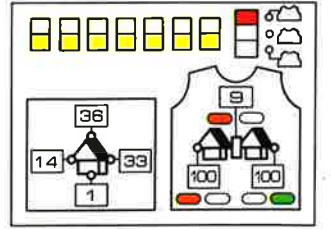
H ①



I ①



J ①

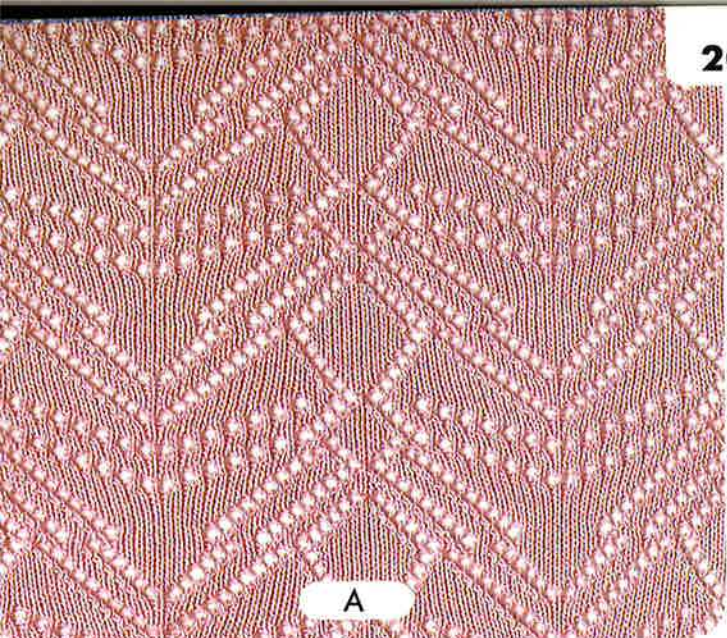


I

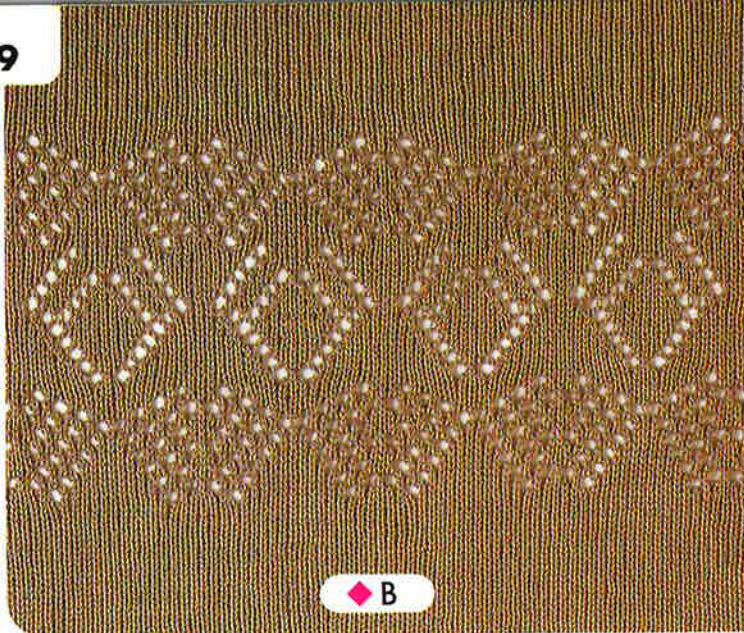


J



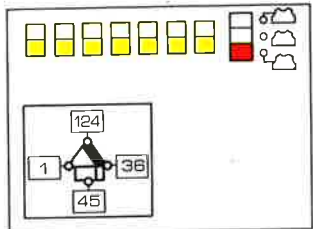


A

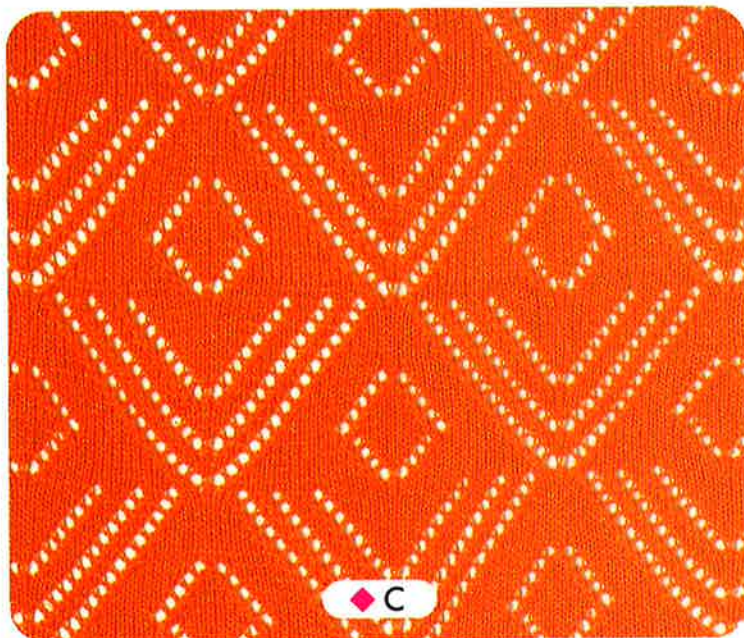
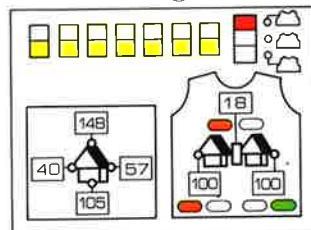


B

A ①

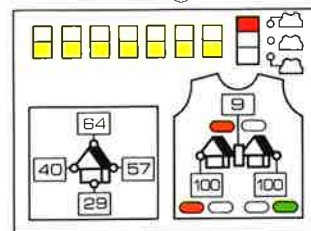


B ②

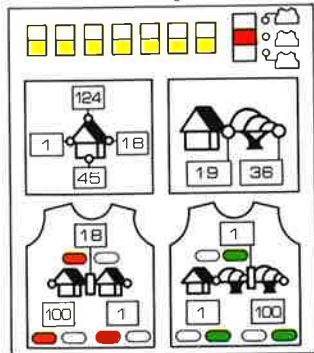


C

B ①

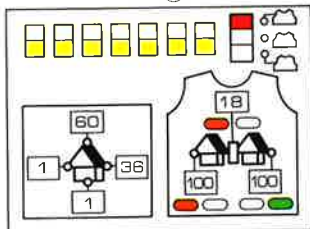


D ①



B ③の操作表はB ①と同じです。  
B ③ Programming: same as for B ①.

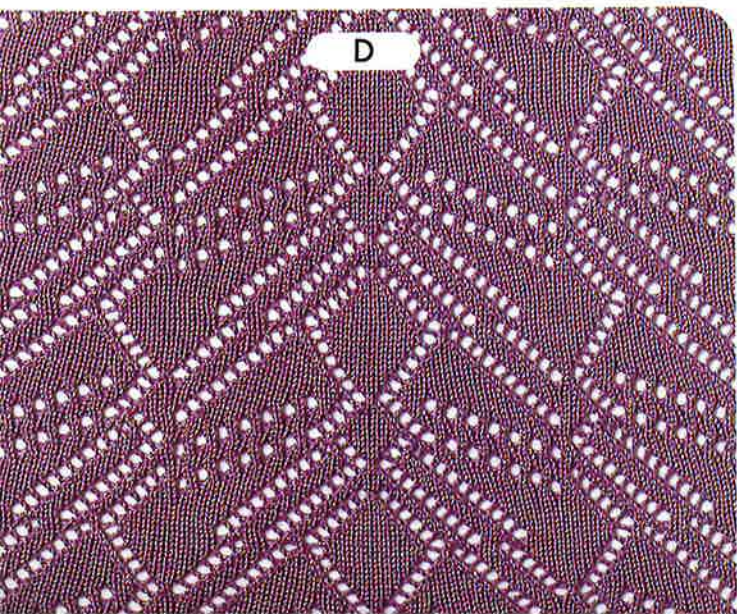
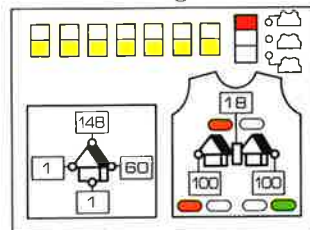
C ①



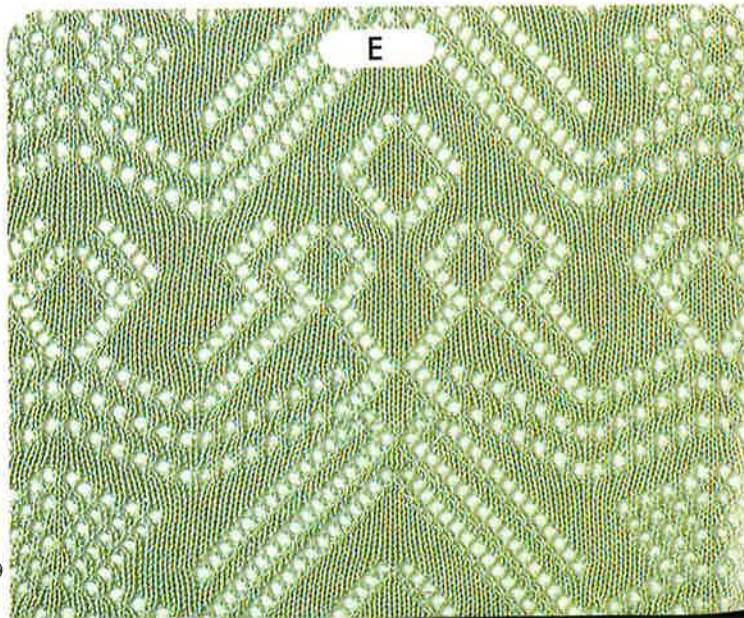
C ②



E ①

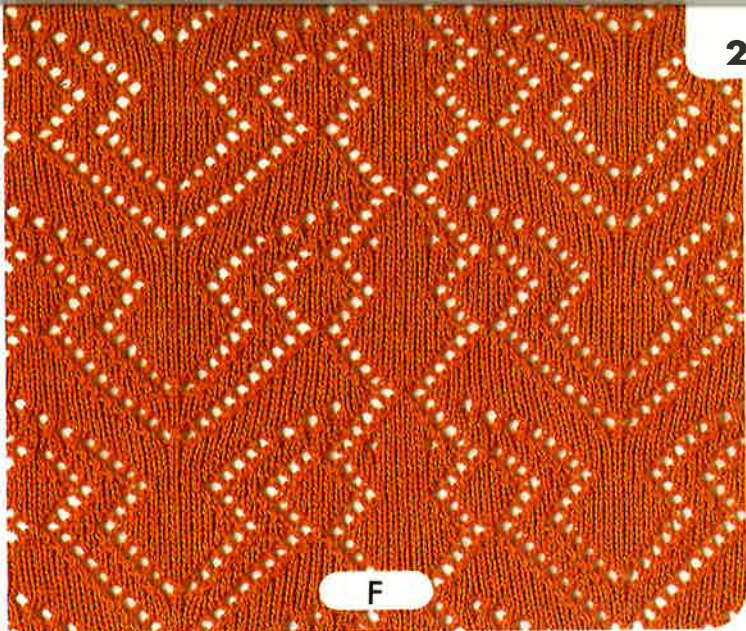


D

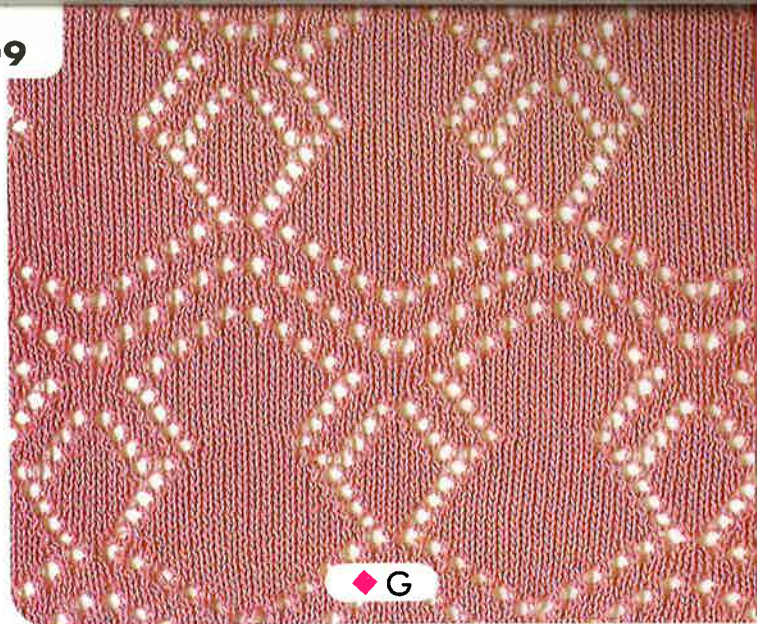


E



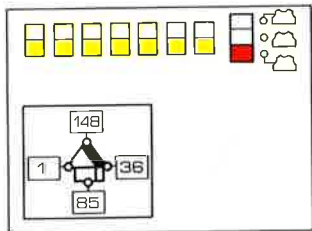


F

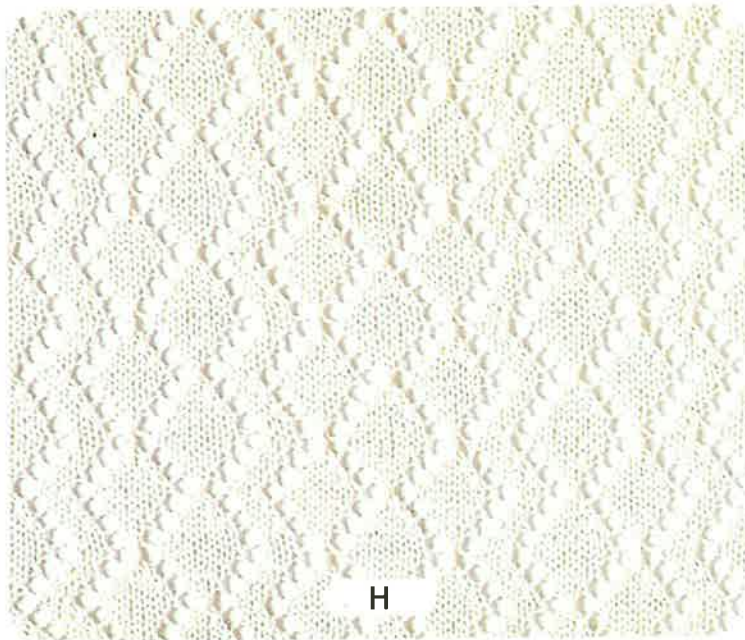
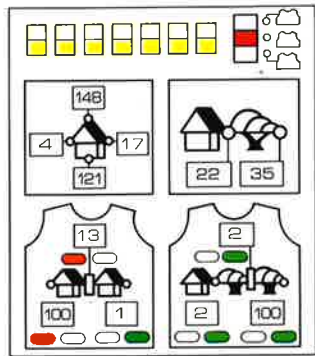


G

F ①



H ①

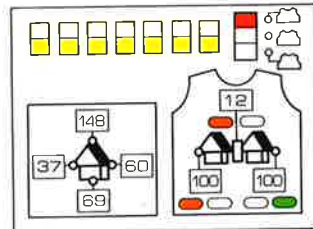


H

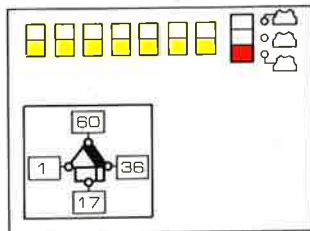
G ②



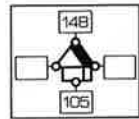
G ①



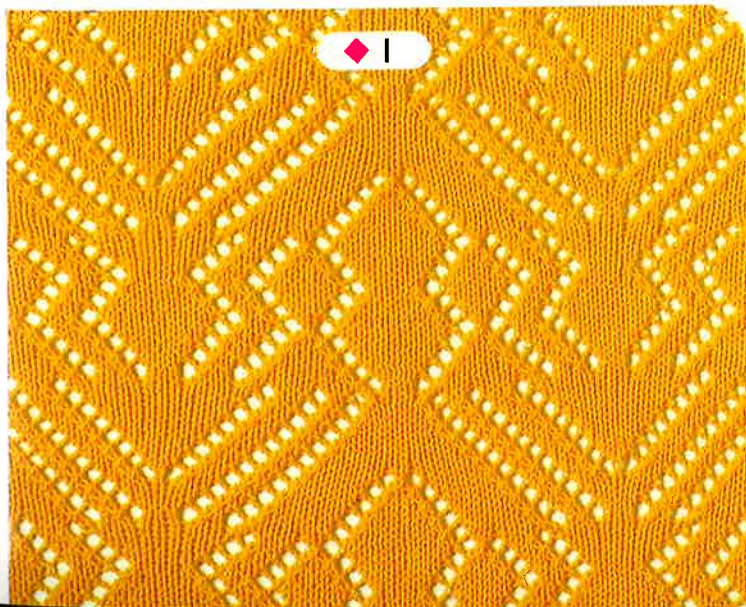
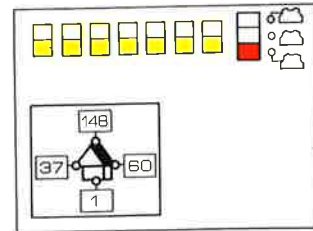
I ①



I ②



J ①

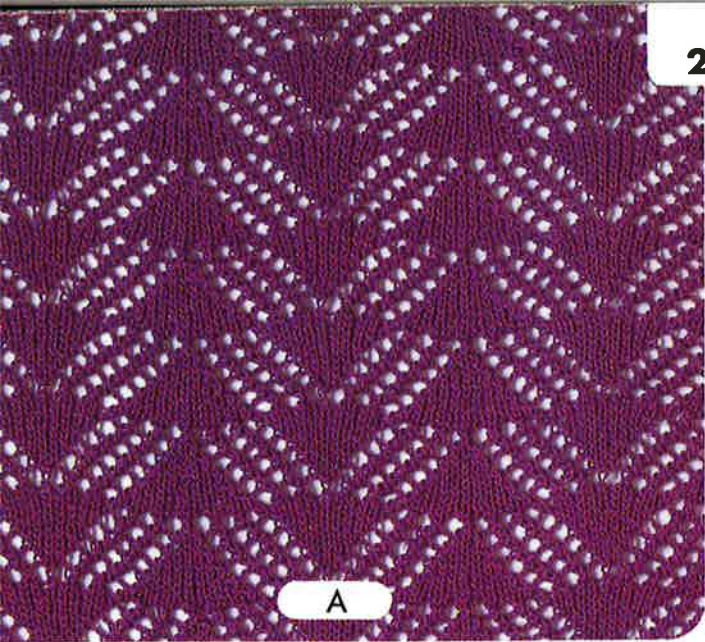


I

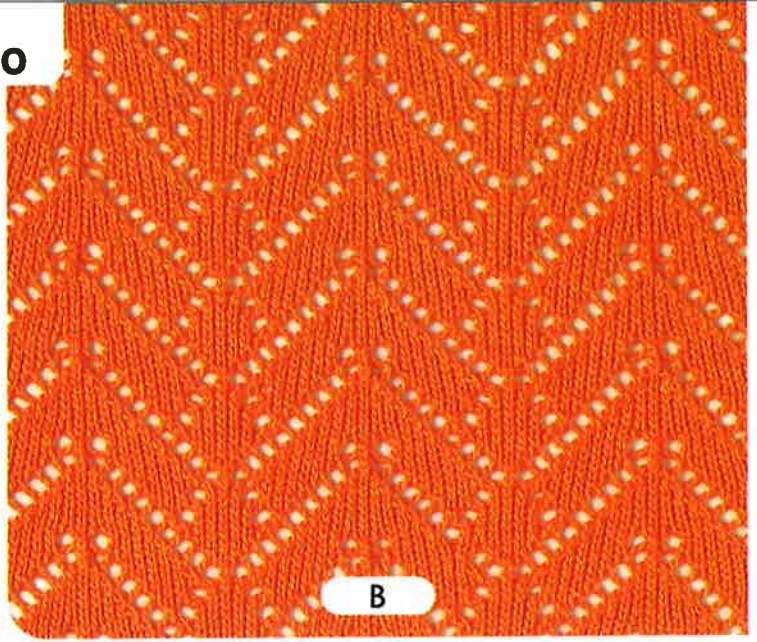


J



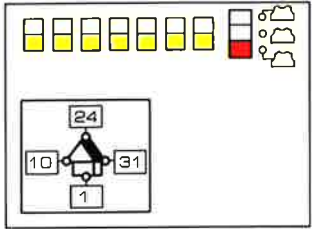


A

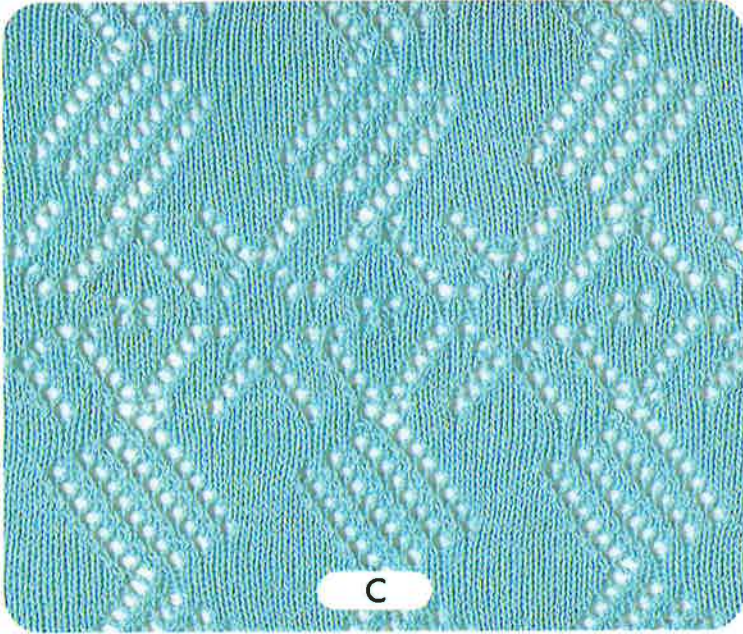
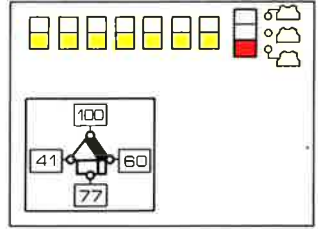


B

A ①

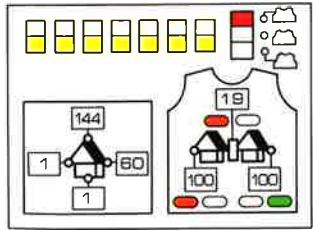


B ①

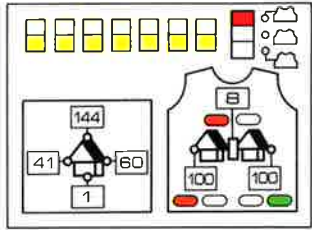


C

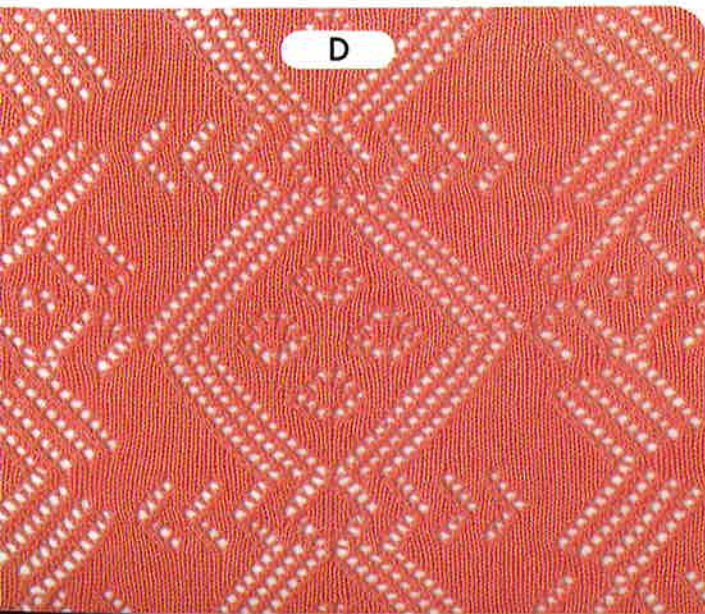
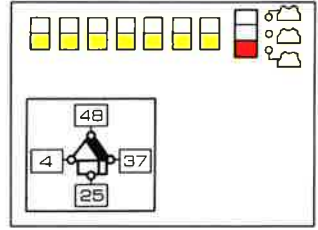
D ①



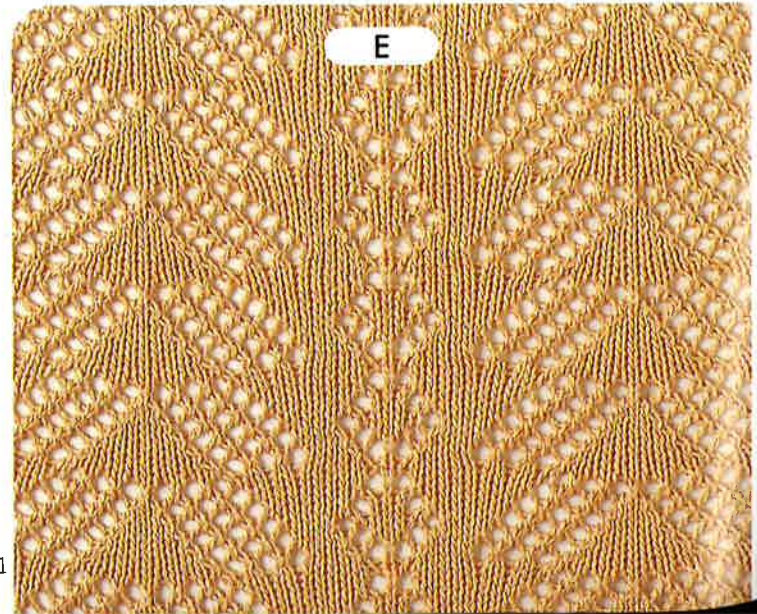
C ①



E ①

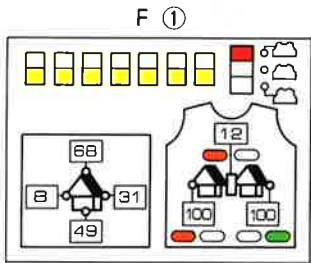
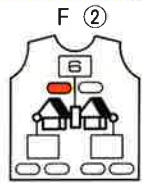
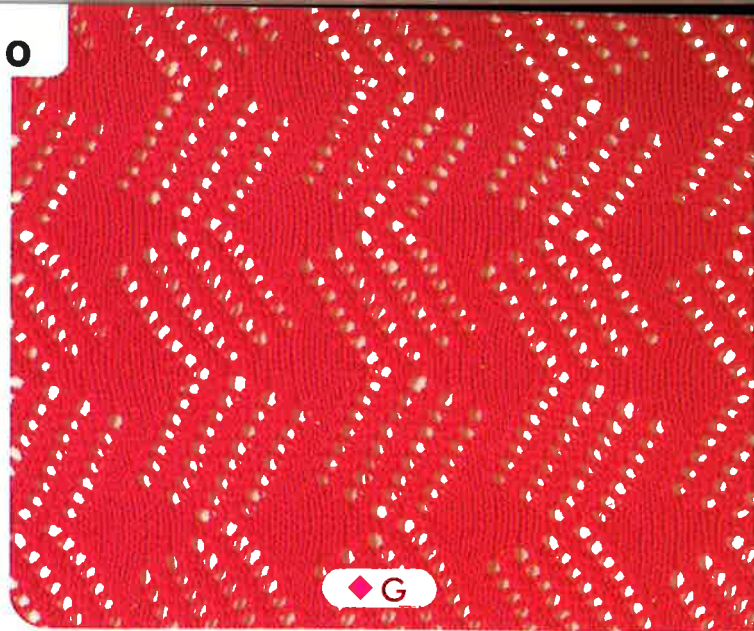
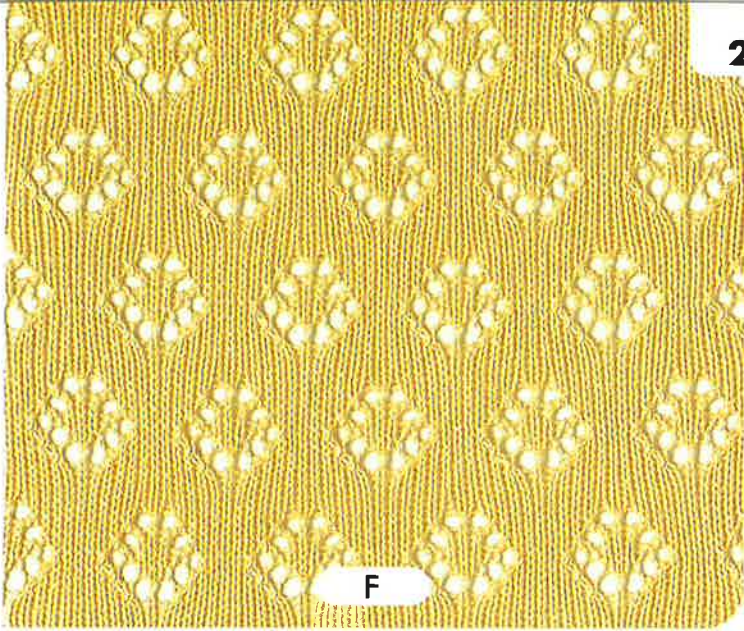


D

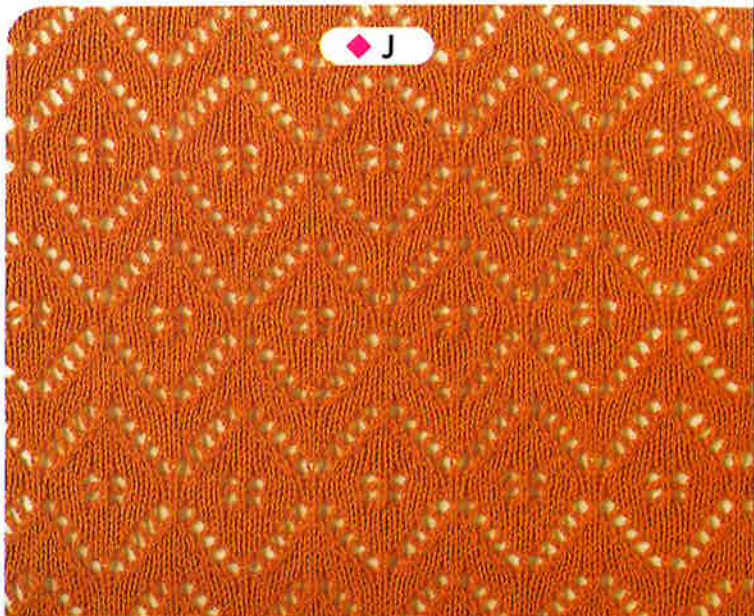
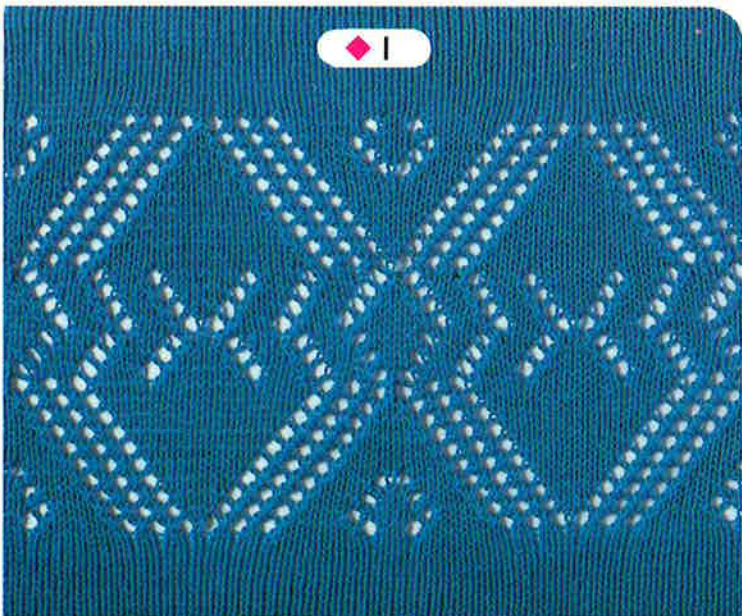
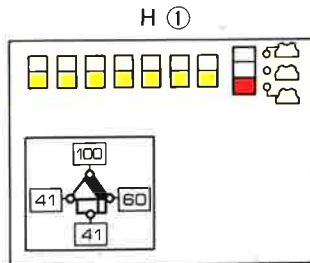
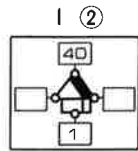
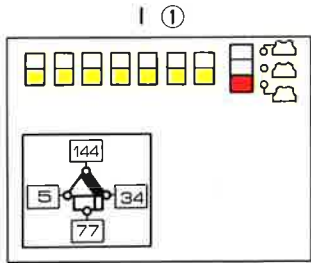
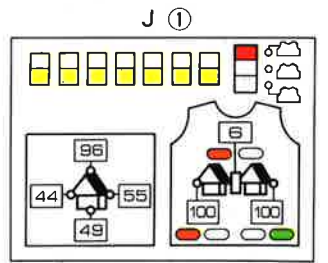
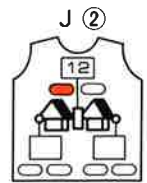
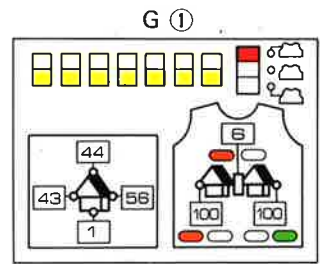
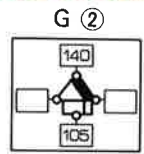
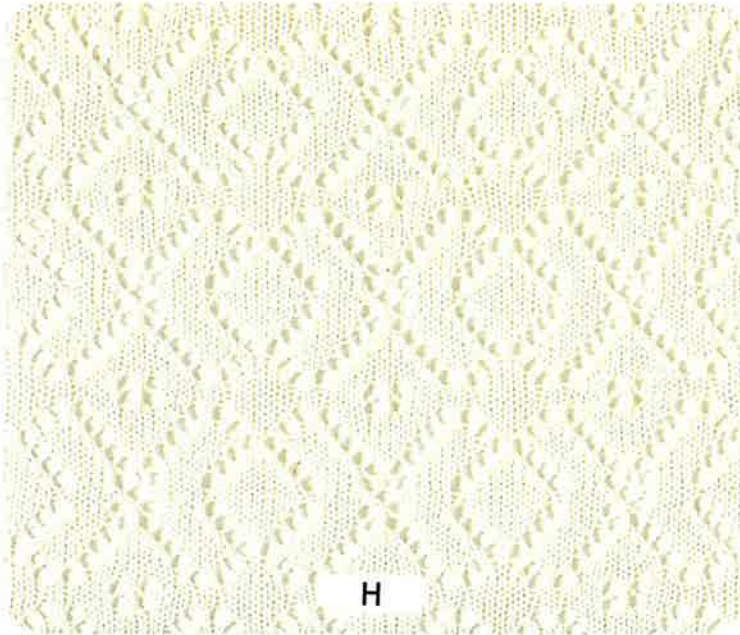


E

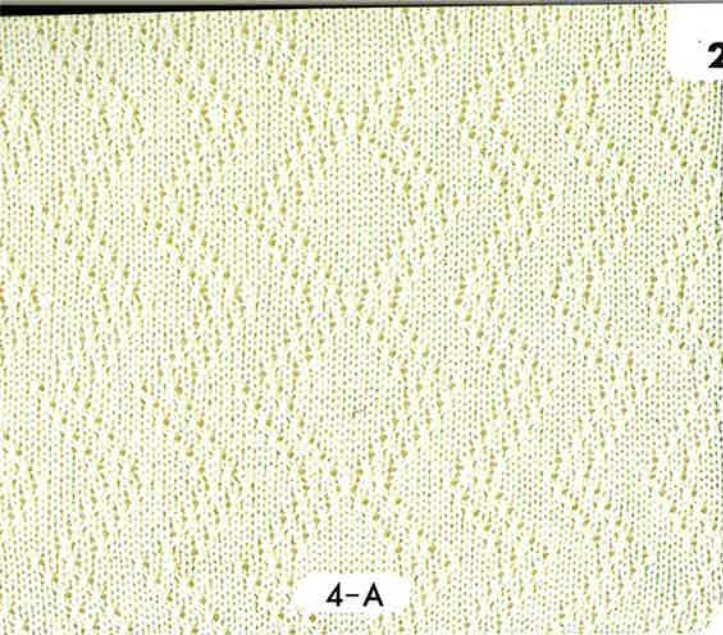




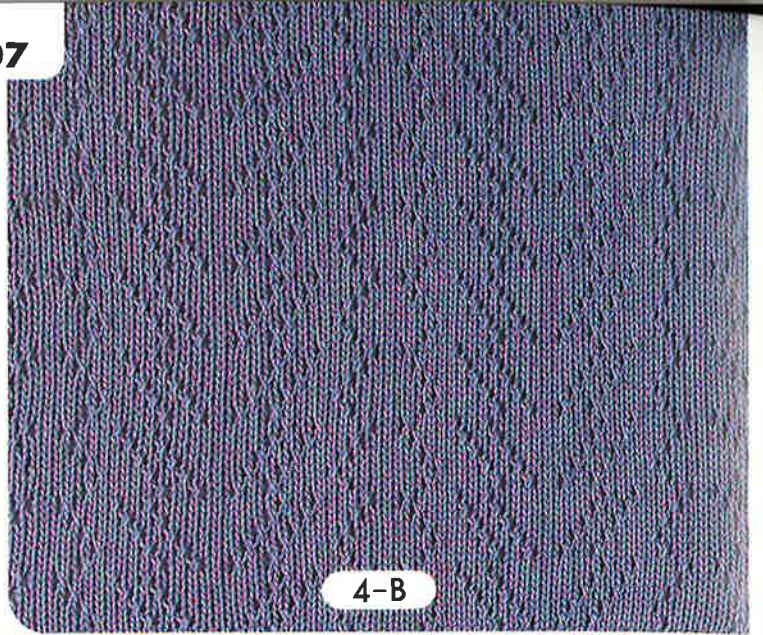
模様の上に平編 8 段編みます。  
Knit 8 rows with Plain stitch  
between patterns.





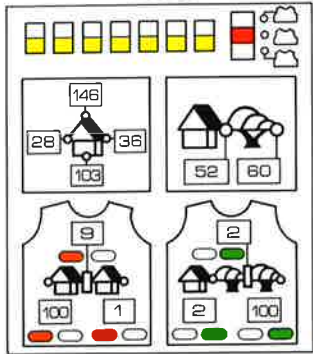


4-A

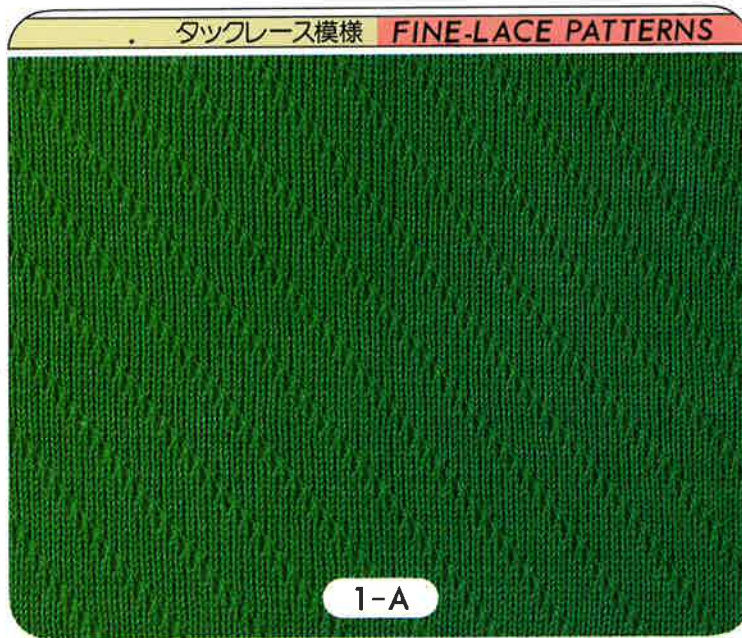
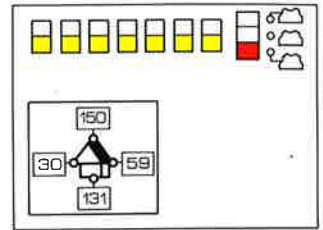


4-B

4-A ①

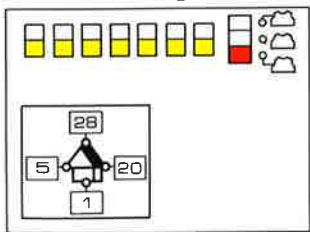


4-B ①

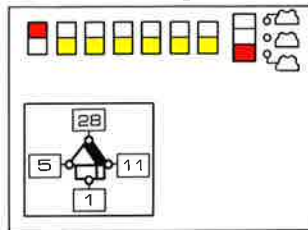


1-A

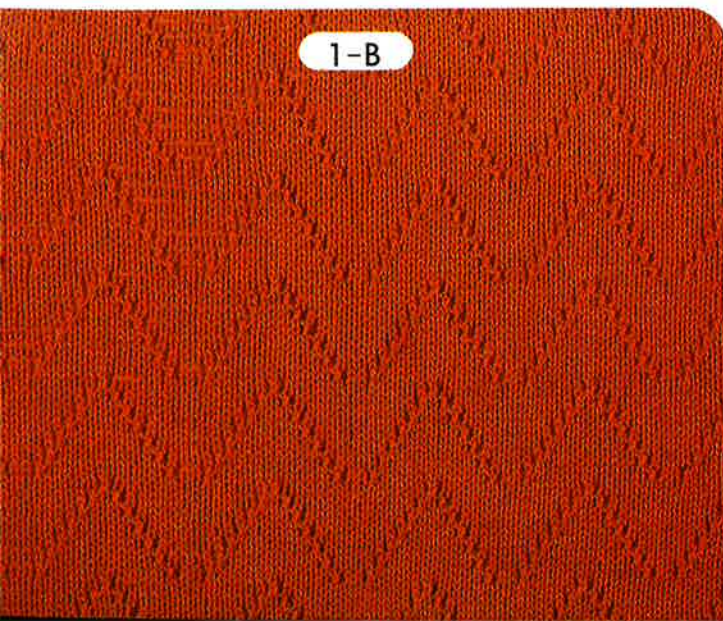
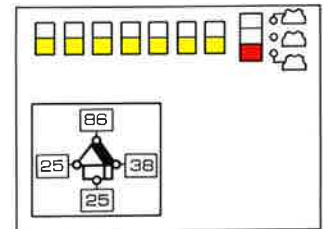
1-B ①



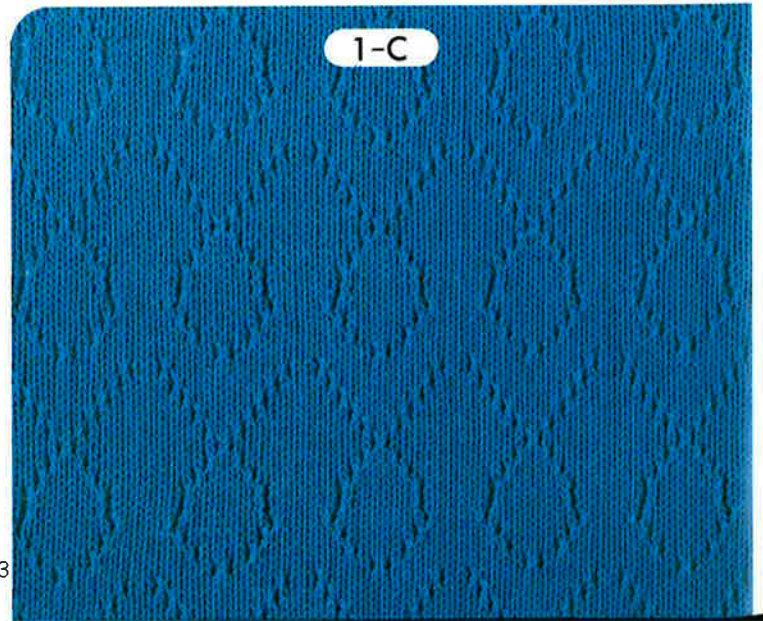
1-A ①



1-C ①

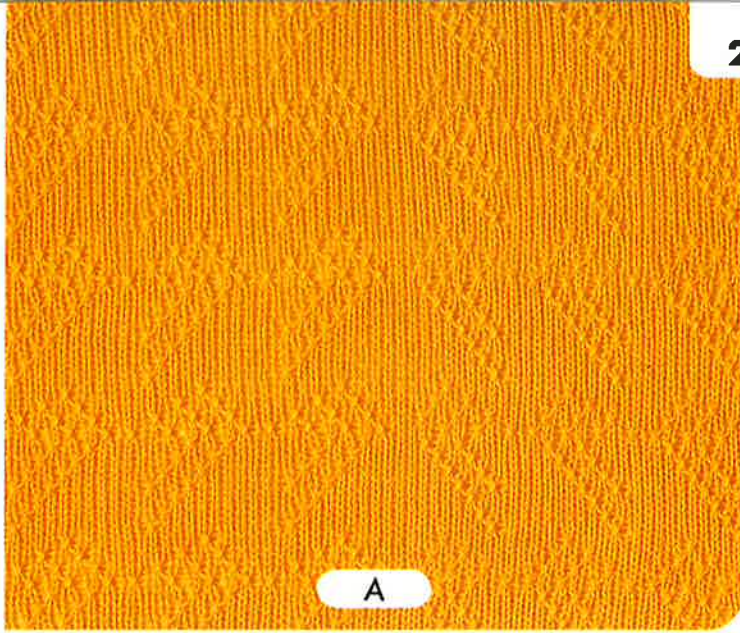


1-B

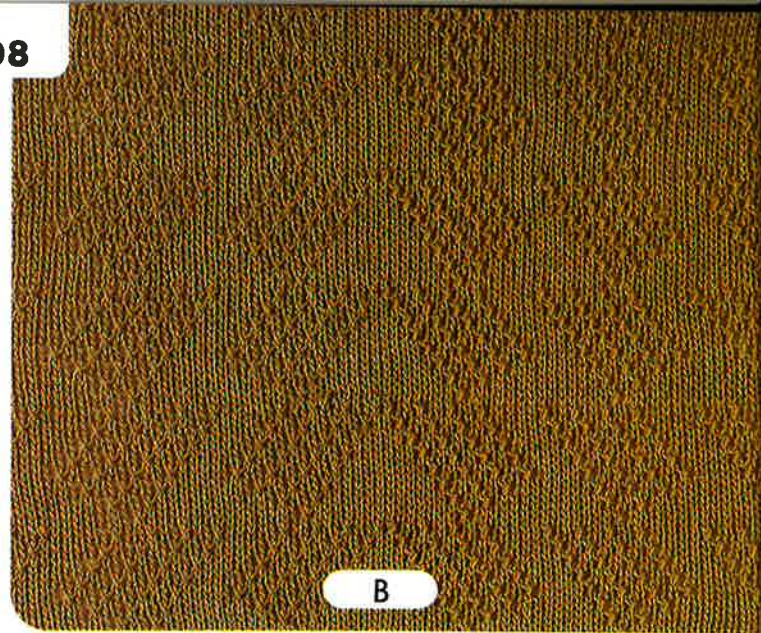


1-C



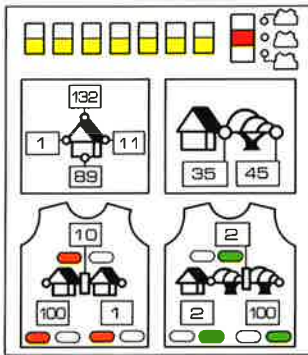


A

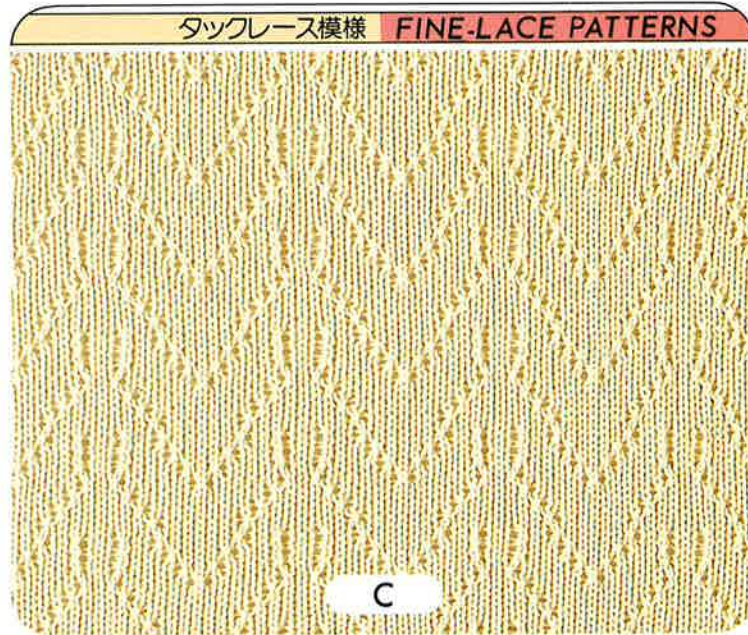
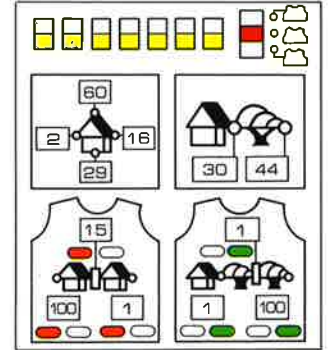


B

A ①

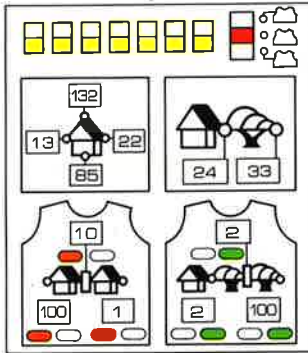


B ①

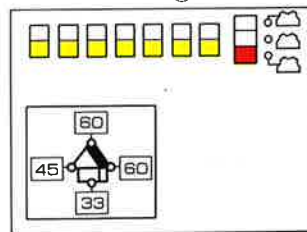


C

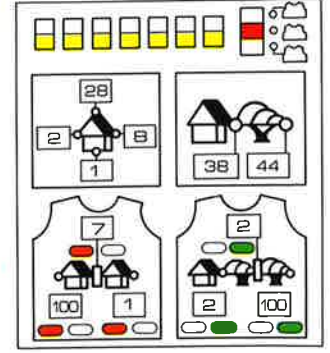
D ①



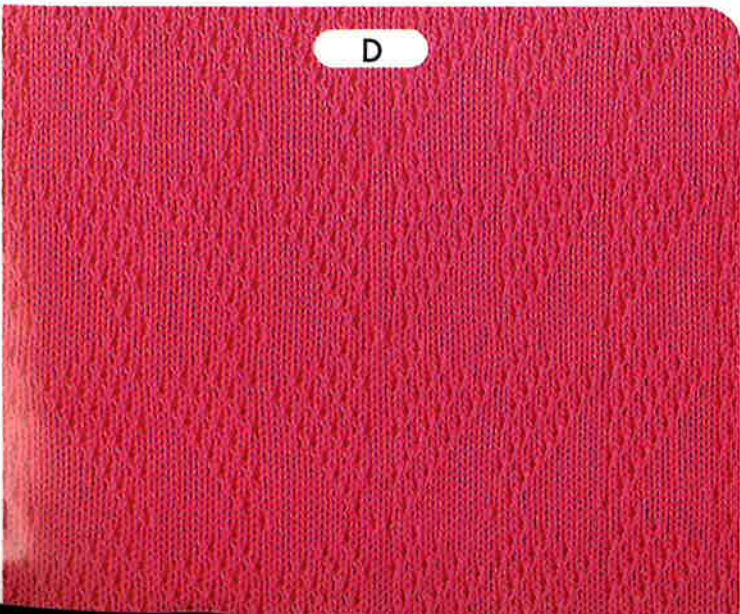
C ①



E ①



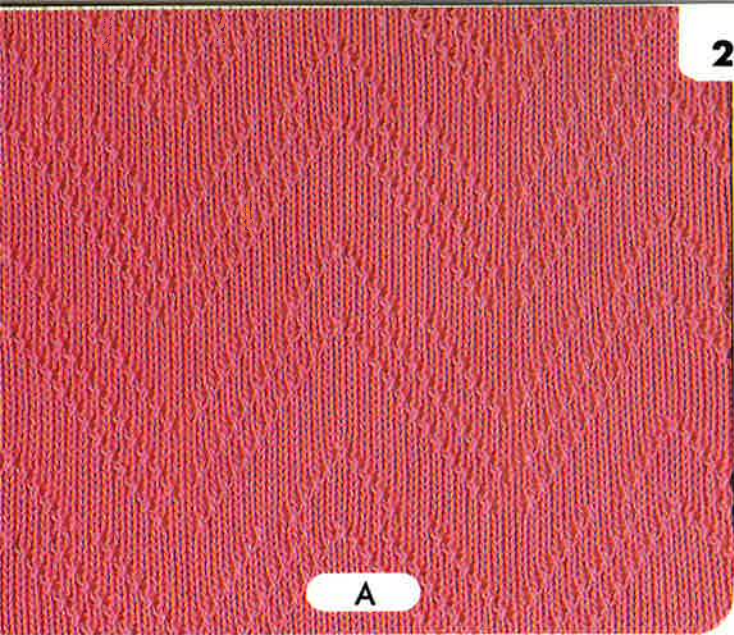
D



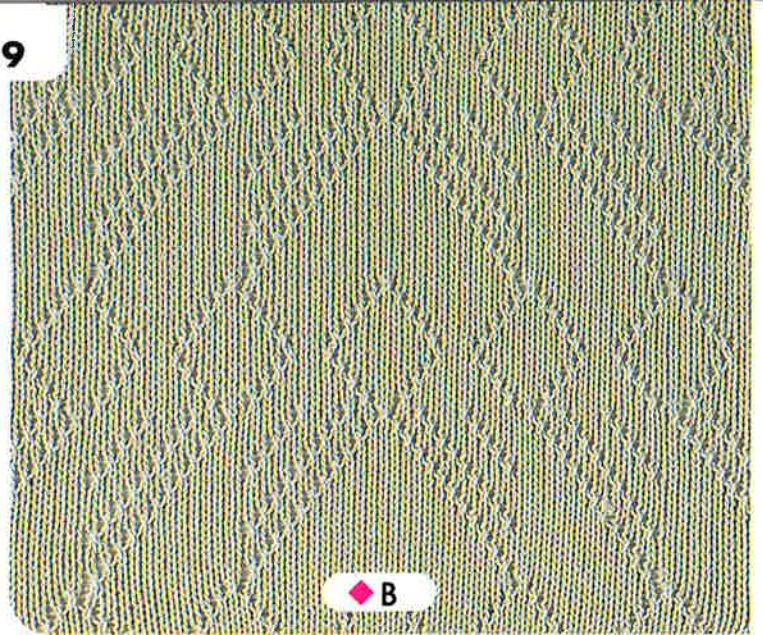
E





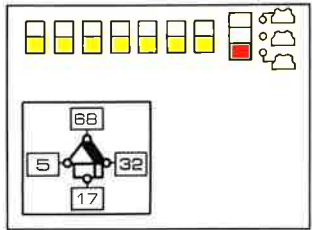


A

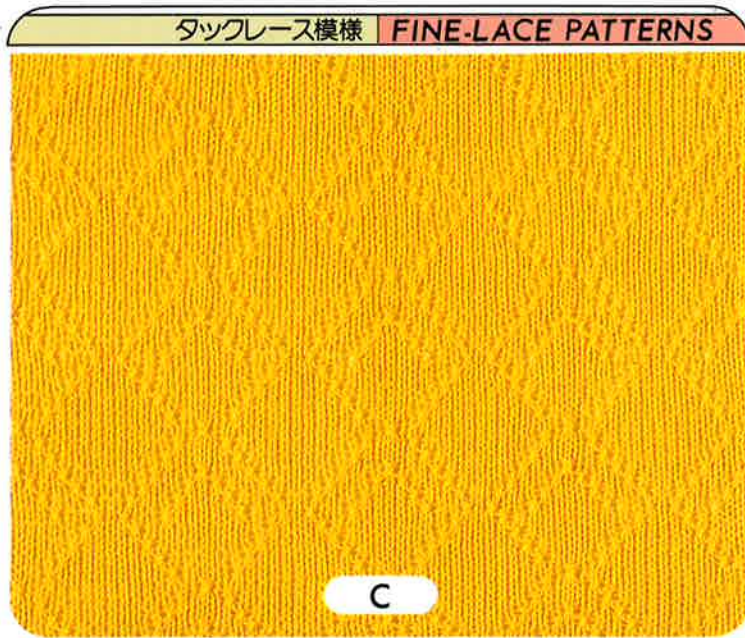
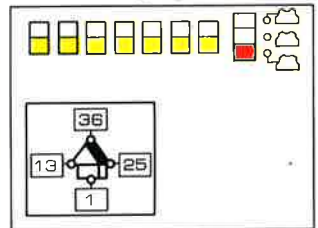


B

A ①

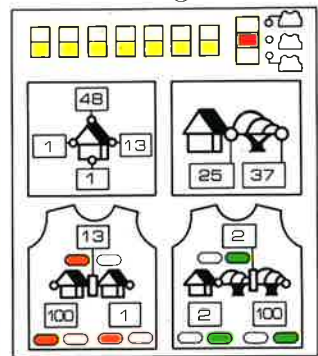


B ②

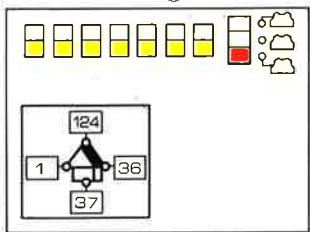


C

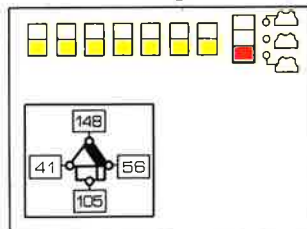
B ①



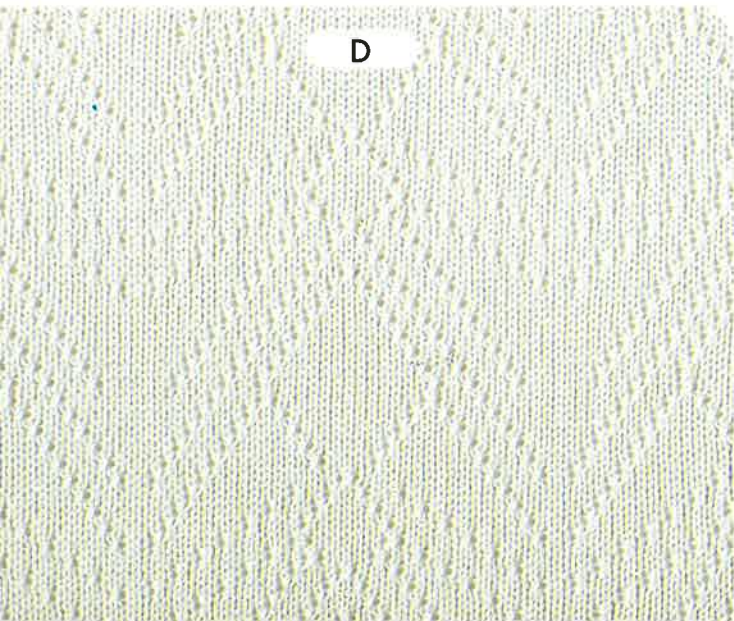
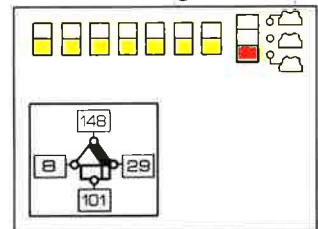
D ①



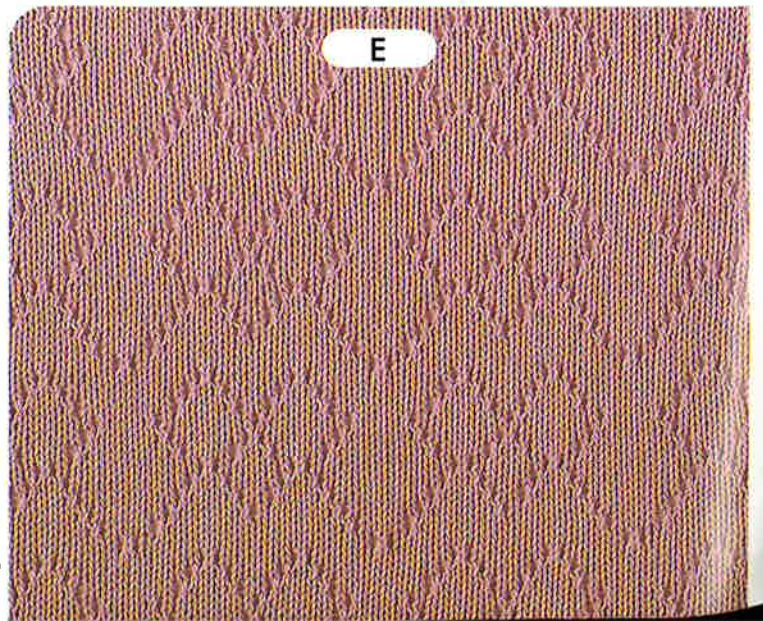
C ①



E ①

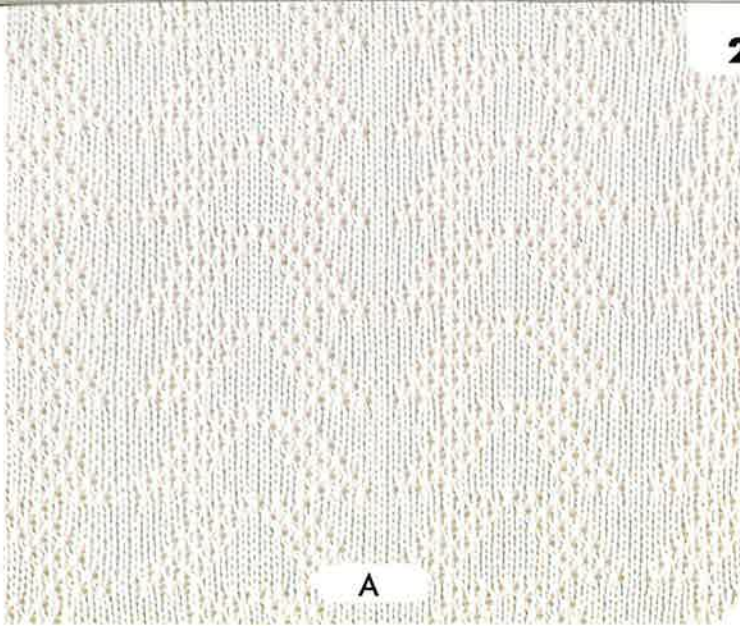


D

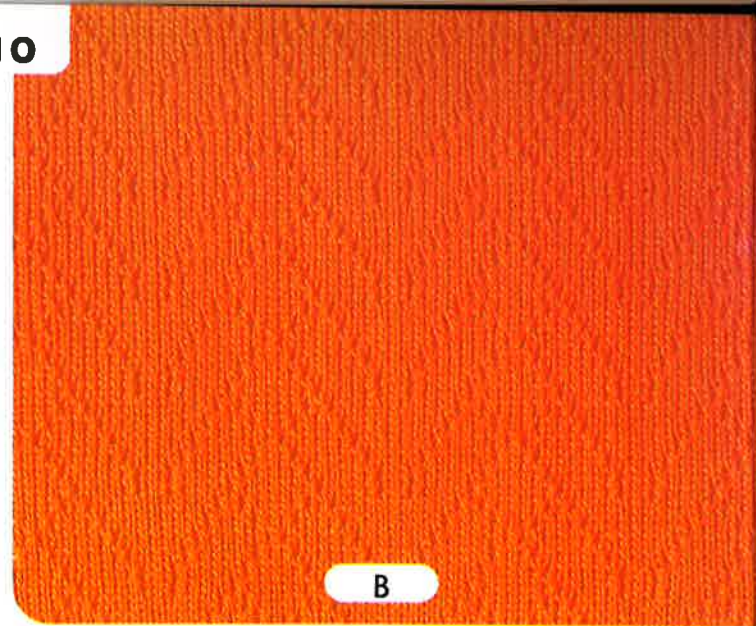


E



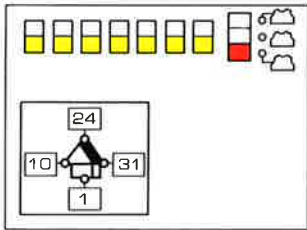


A

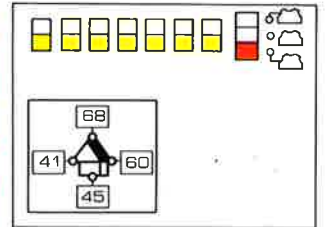


B

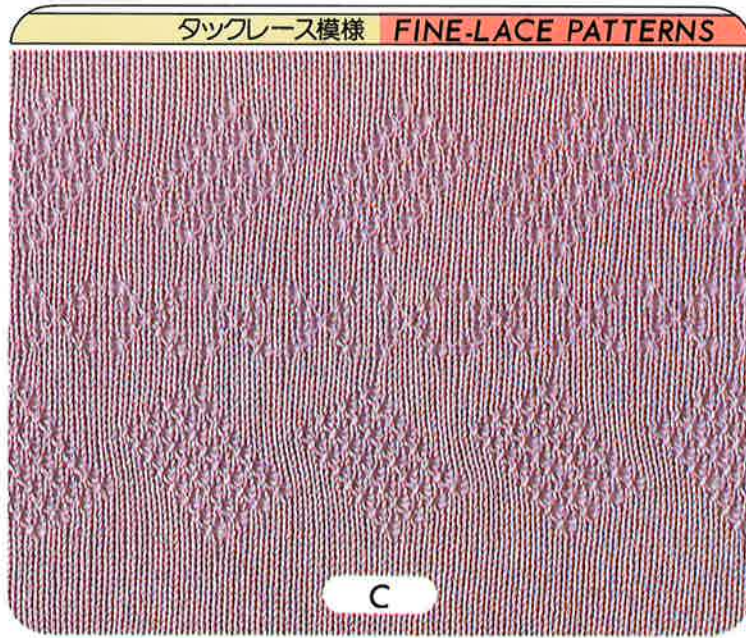
A ①



B ①

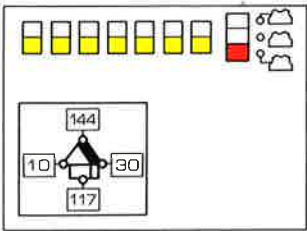


タックレース模様 FINE-LACE PATTERNS

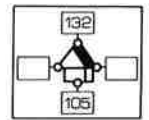


C

D ①



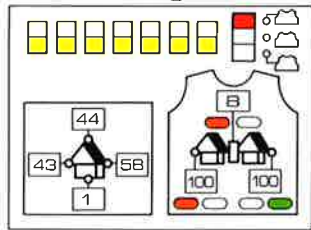
E ②



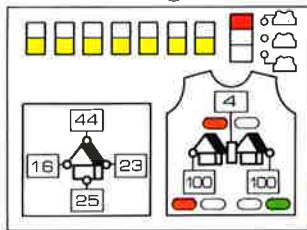
模様の中に平編6段編みます。

Knit 6 rows with Plain stitch between patterns.

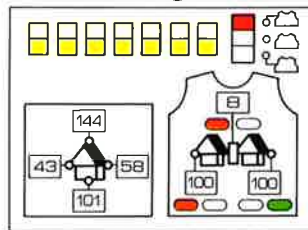
C ①



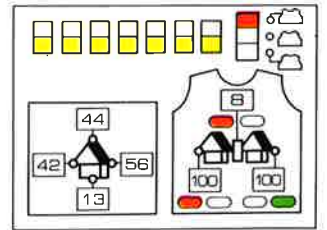
C ②



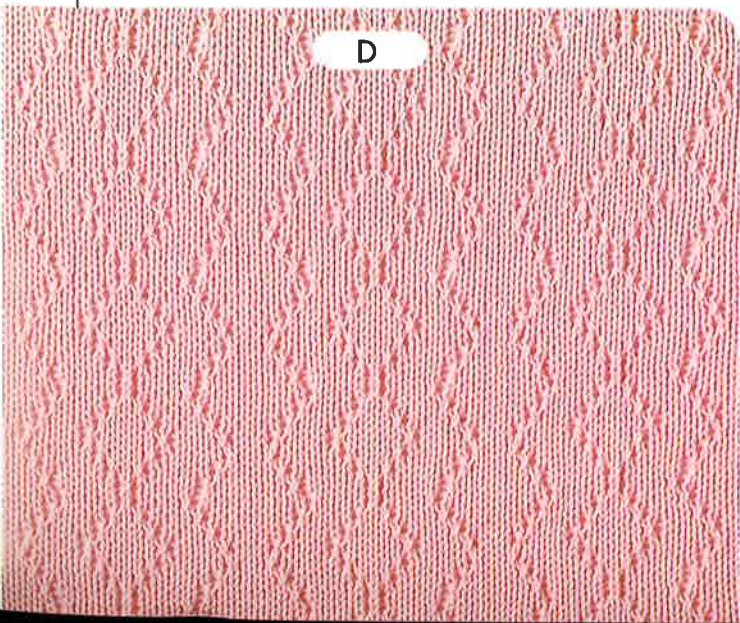
C ③



E ①



D



E

