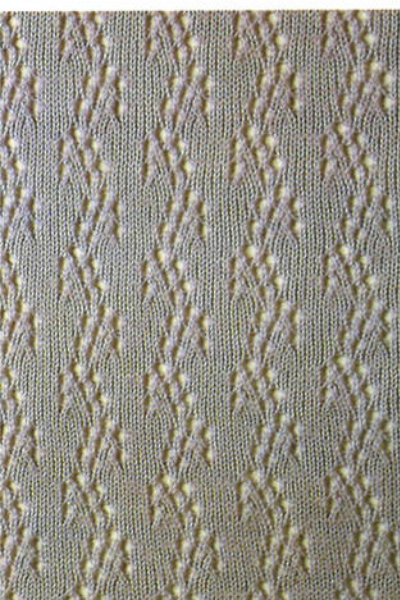
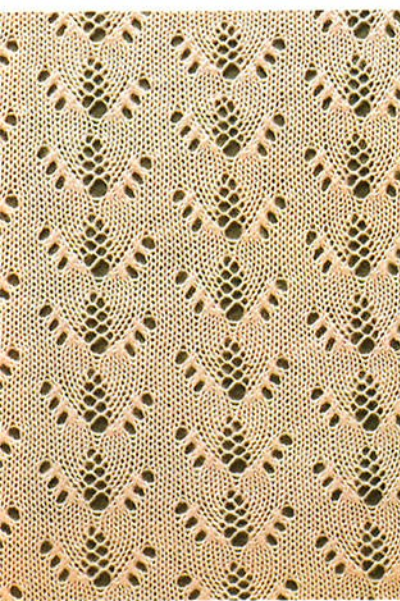




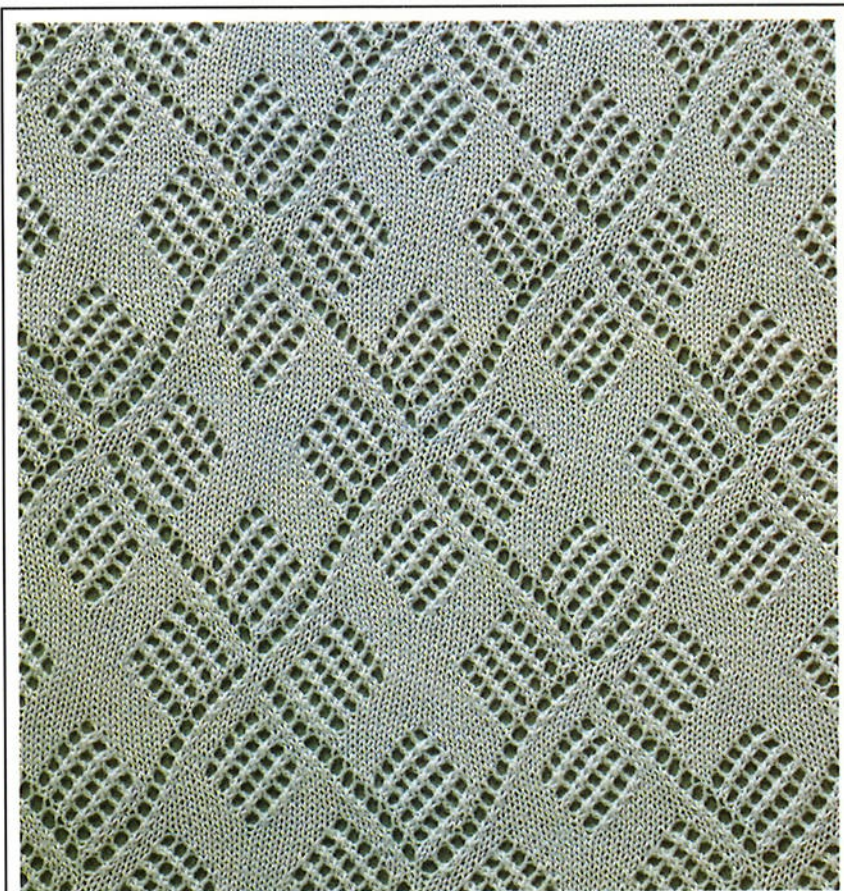
No.FL-28



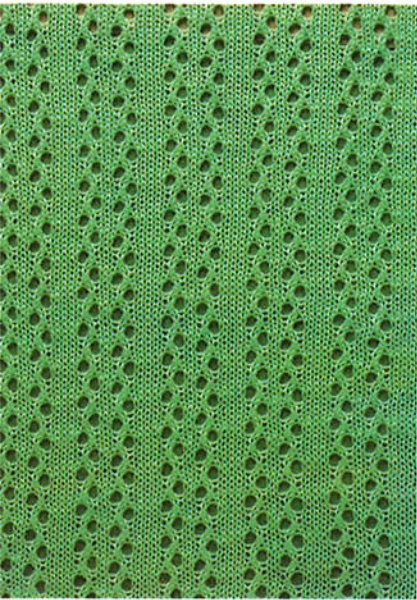
No.FL-29



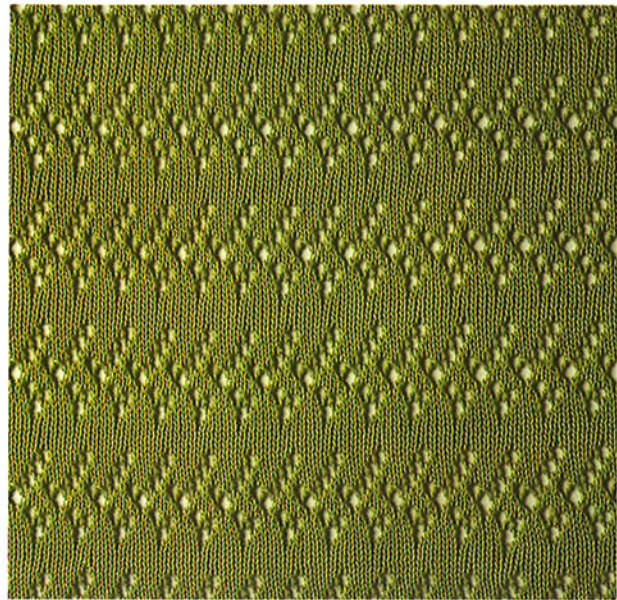
No.FL-30



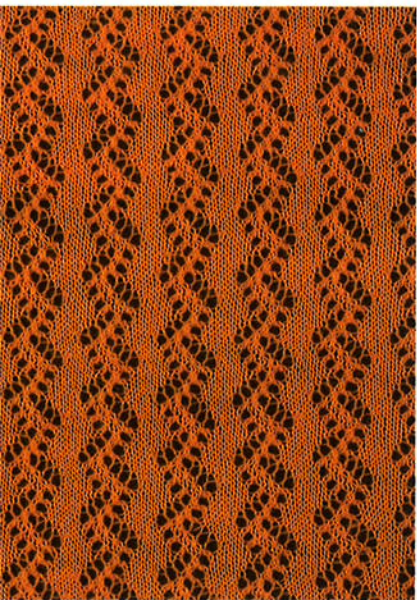
No.FL-21



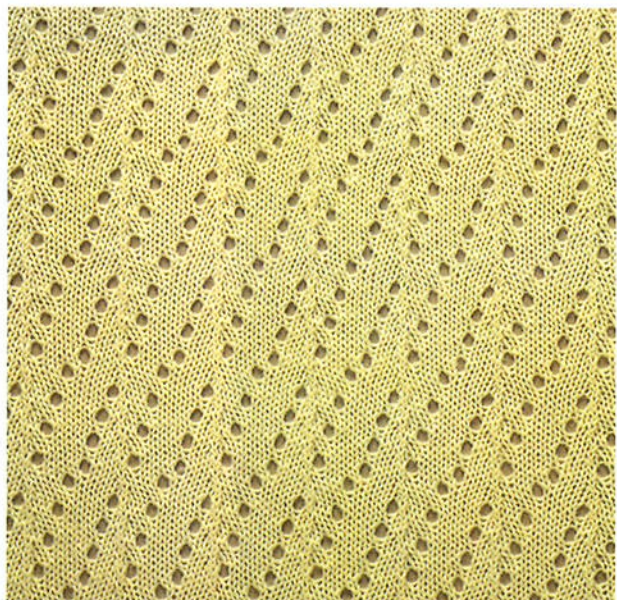
No.FL-22



No.FL-25



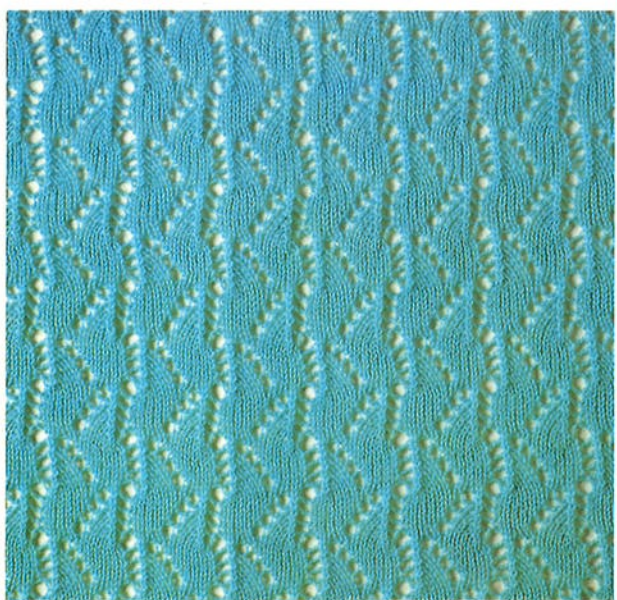
No.FL-23



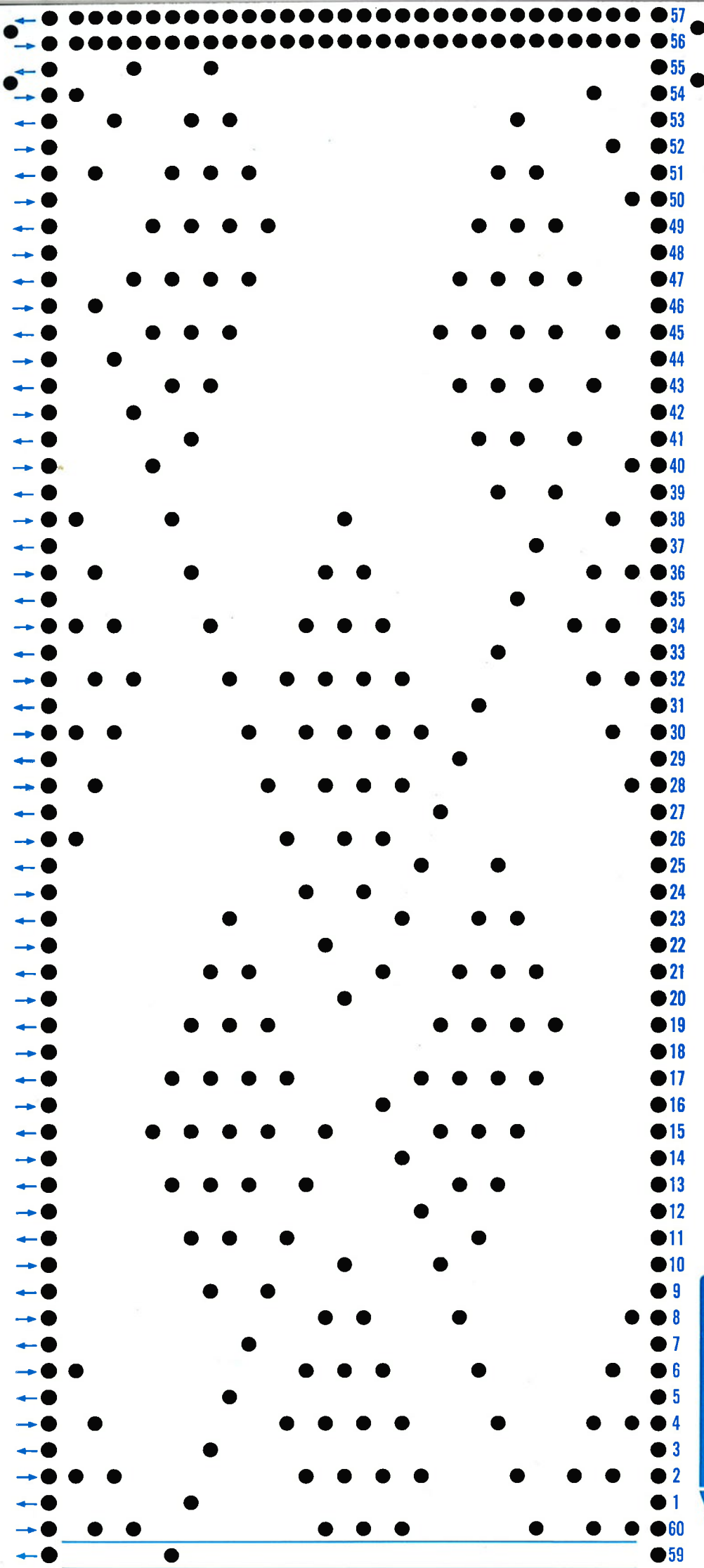
No.FL-26



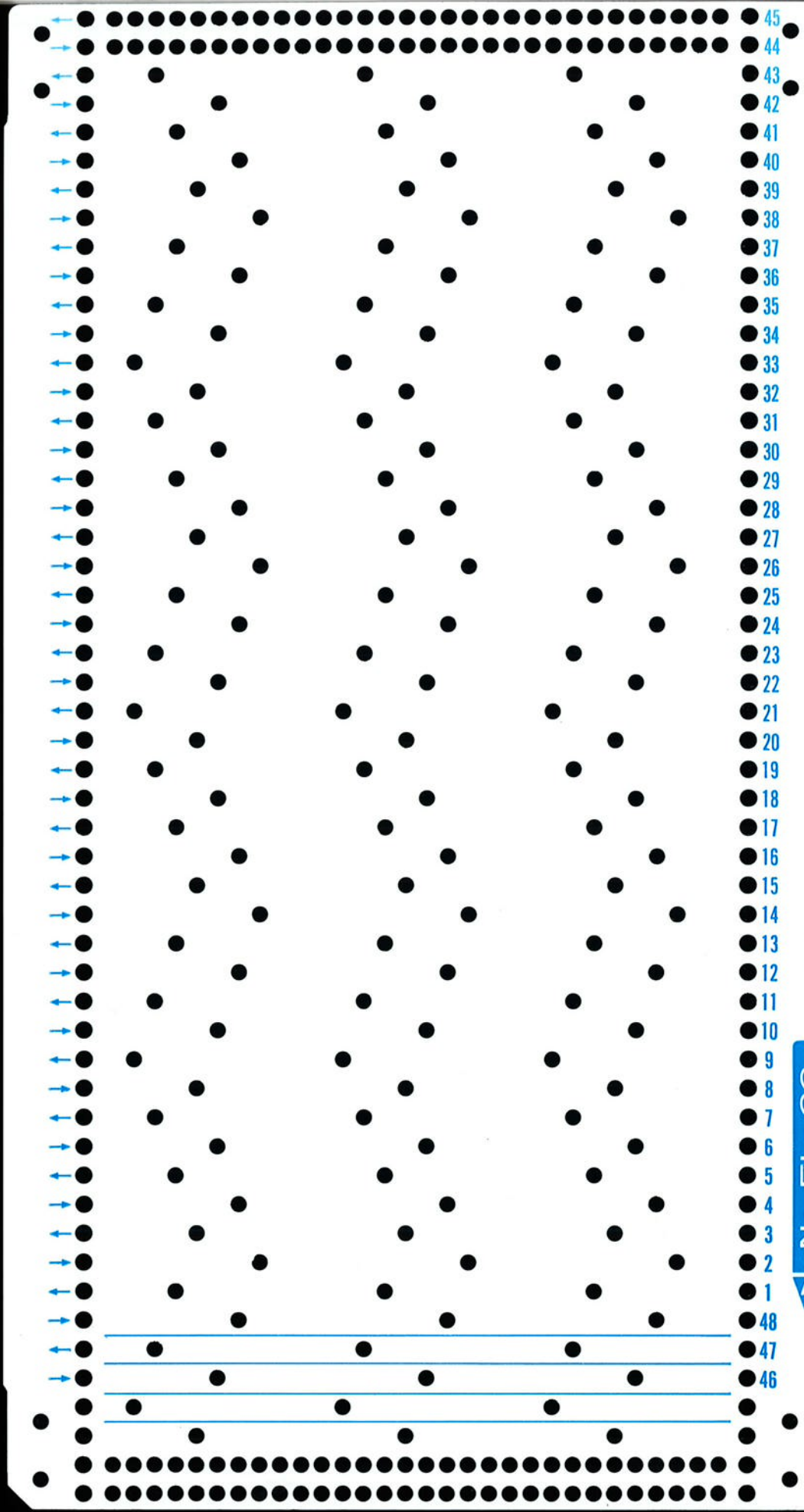
No.FL-24



No.FL-27

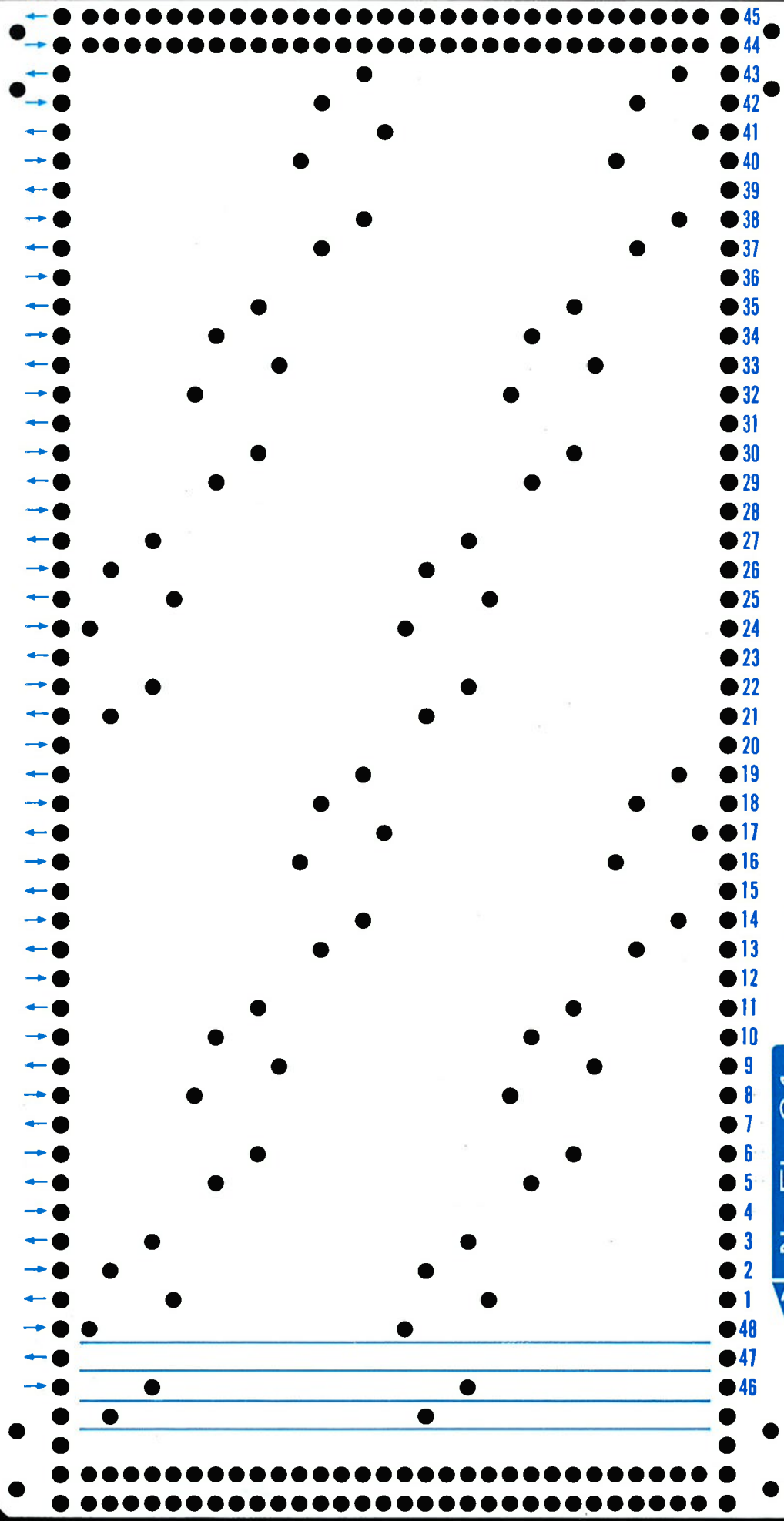


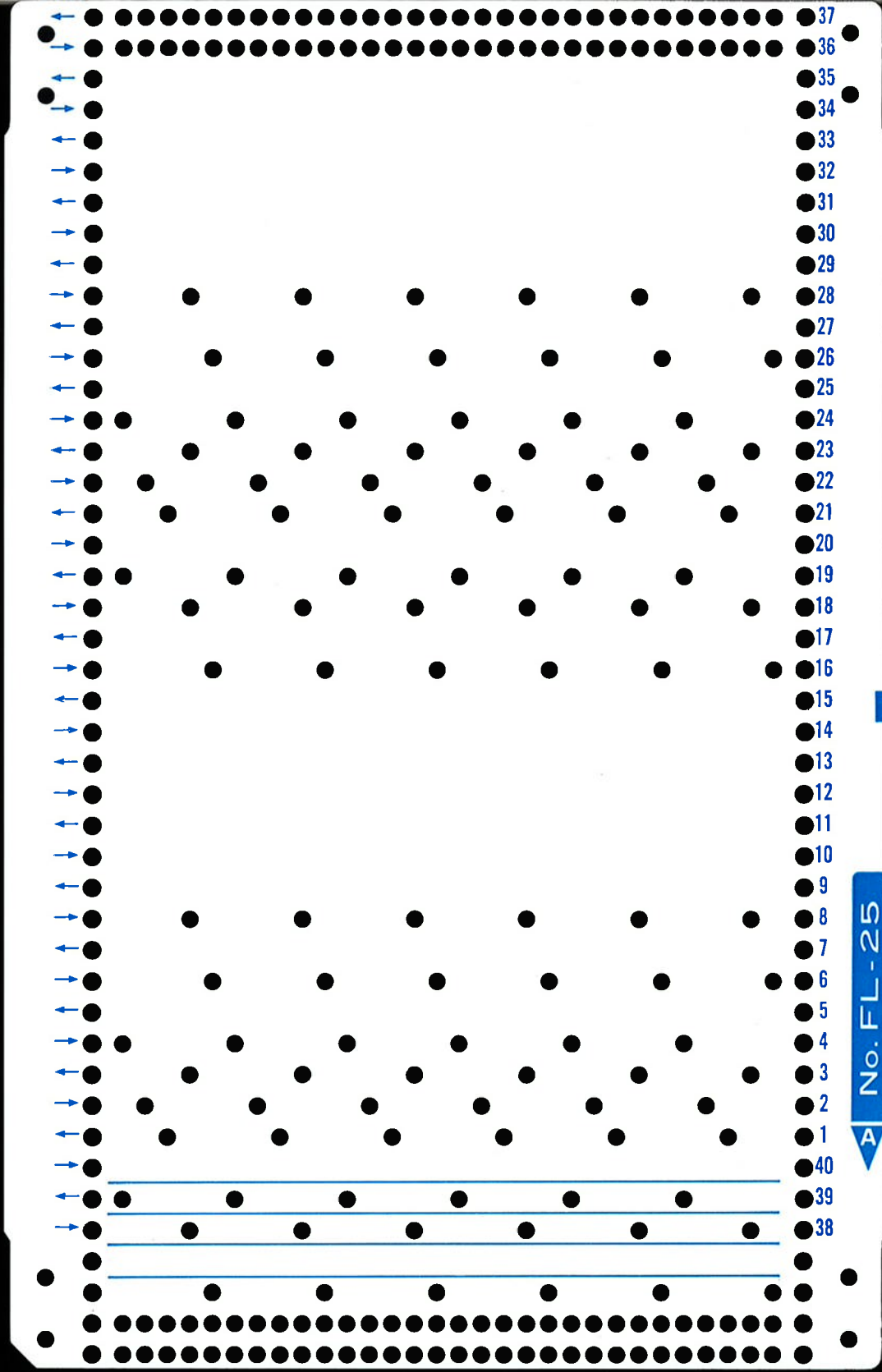
This image shows a dot grid for a dot-matrix printer. The grid consists of 36 rows, numbered 1 to 36 on the right side. Each row is represented by a horizontal line of dots. Blue arrows on the left side of the grid indicate the direction of printing for each row: arrows pointing right for rows 1, 3, 5, 7, 9, 11, 13, 15, 17, 19, 21, 23, 25, 27, 29, 31, and 33; and arrows pointing left for rows 2, 4, 6, 8, 10, 12, 14, 16, 18, 20, 22, 24, 26, 28, 30, 32, and 34. The top and bottom edges of the grid are also defined by rows of dots. At the bottom of the grid, there are four horizontal blue lines and a row of dots.

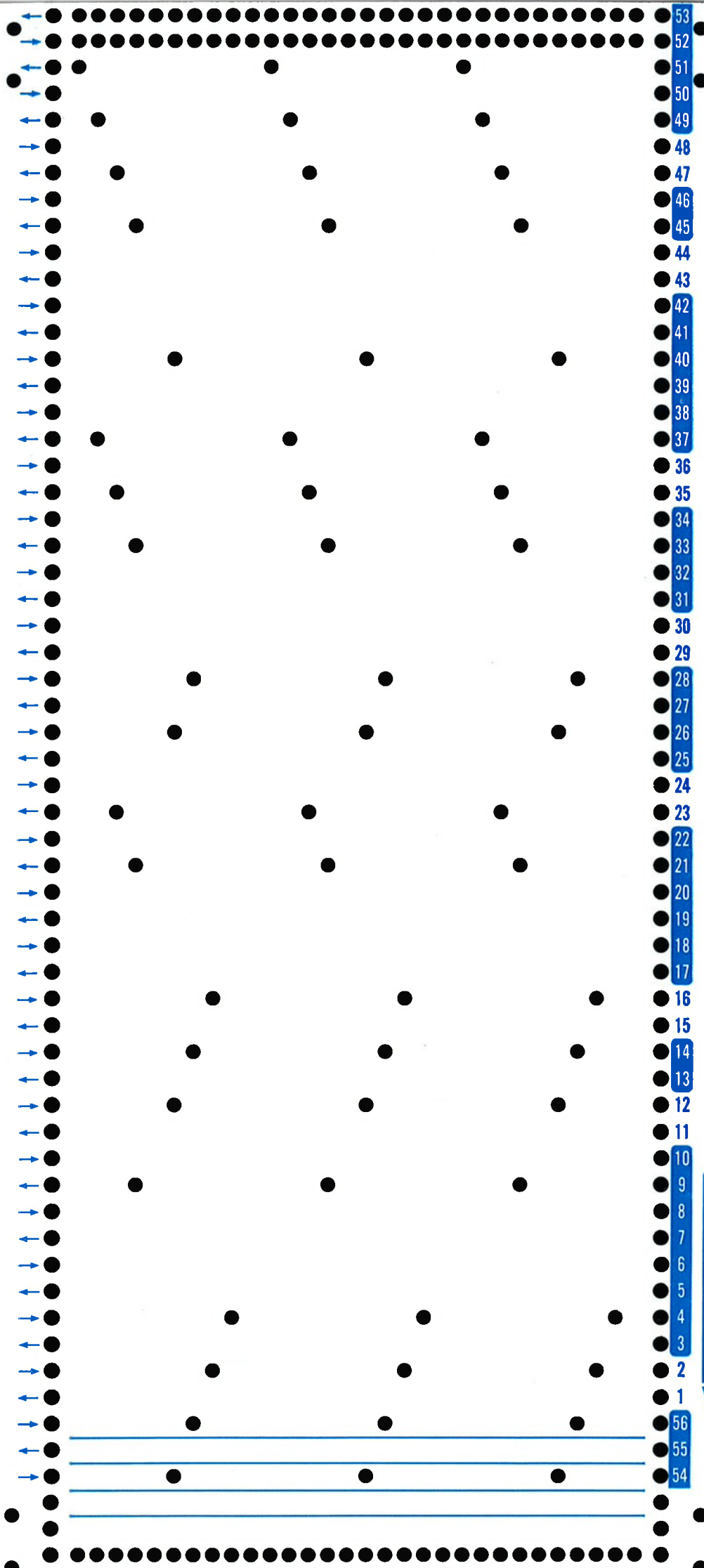


45  
44  
43  
42  
41  
40  
39  
38  
37  
36  
35  
34  
33  
32  
31  
30  
29  
28  
27  
26  
25  
24  
23  
22  
21  
20  
19  
18  
17  
16  
15  
14  
13  
12  
11  
10  
9  
8  
7  
6  
5  
4  
3  
2  
1

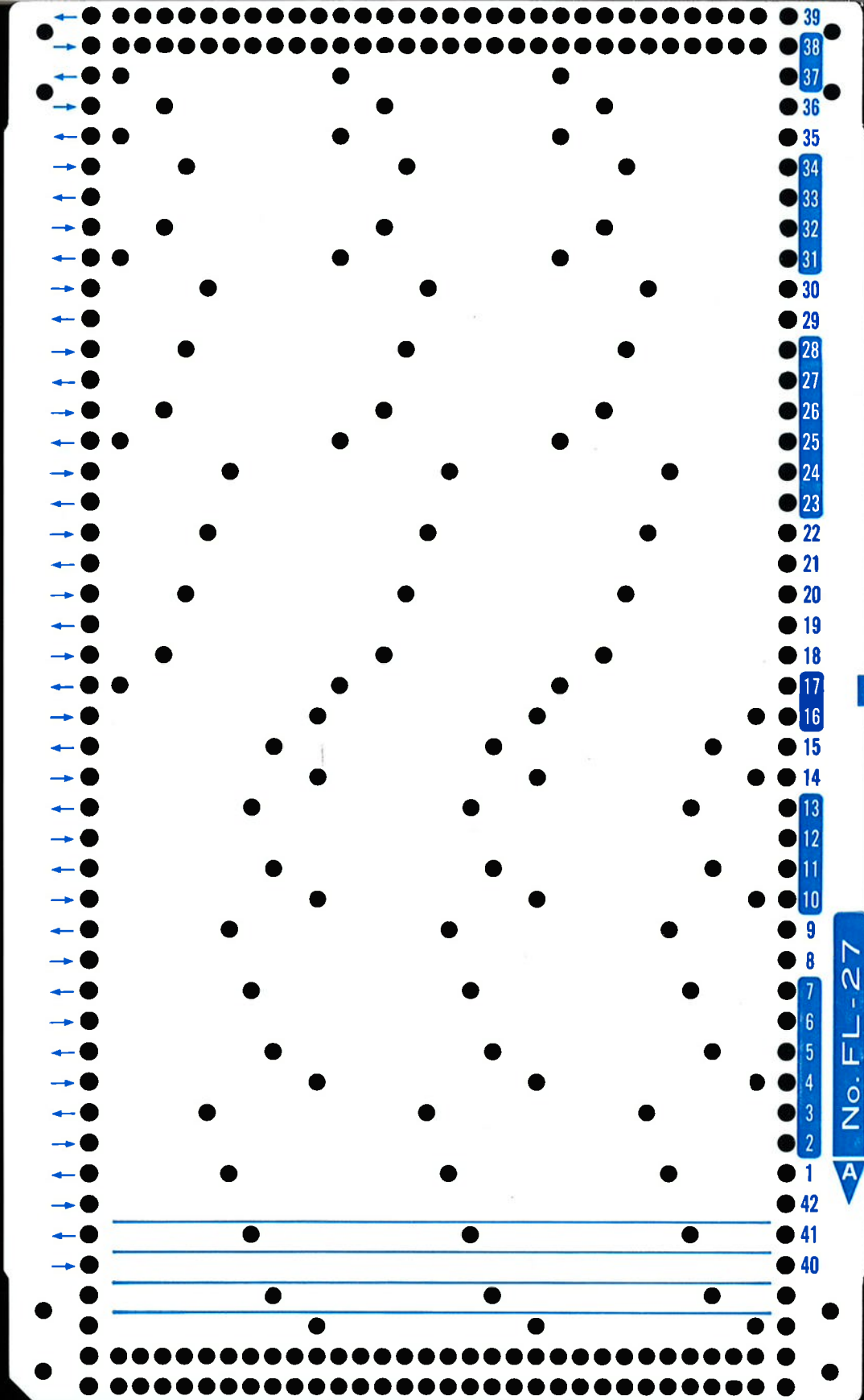
48  
47  
46







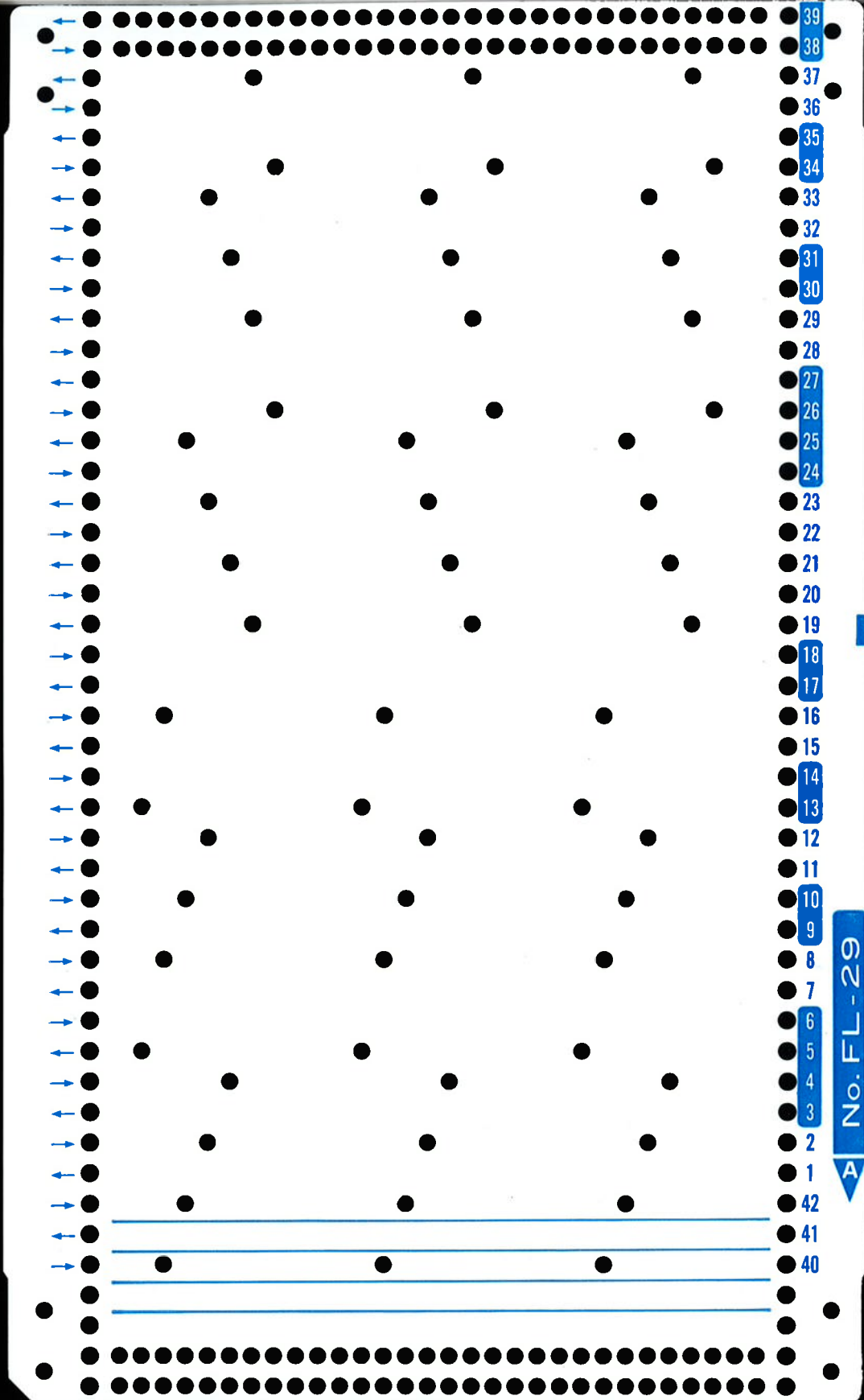




39  
38  
37  
36  
35  
34  
33  
32  
31  
30  
29  
28  
27  
26  
25  
24  
23  
22  
21  
20  
19  
18  
17  
16  
15  
14  
13  
12  
11  
10  
9  
8  
7  
6  
5  
4  
3  
2  
1  
42  
41  
40

53  
52  
51  
50  
49  
48  
47  
46  
45  
44  
43  
42  
41  
40  
39  
38  
37  
36  
35  
34  
33  
32  
31  
30  
29  
28  
27  
26  
25  
24  
23  
22  
21  
20  
19  
18  
17  
16  
15  
14  
13  
12  
11  
10  
9  
8  
7  
6  
5  
4  
3  
2  
1  
56  
55  
54

The page features a grid of 56 numbered lines, each starting with a blue arrow pointing right. The grid is bounded by a top and bottom row of black dots. The main area contains scattered black dots for tracing. At the bottom, there are three horizontal blue lines for writing practice, with a row of black dots below them.



39  
38  
37  
36  
35  
34  
33  
32  
31  
30  
29  
28  
27  
26  
25  
24  
23  
22  
21  
20  
19  
18  
17  
16  
15  
14  
13  
12  
11  
10  
9  
8  
7  
6  
5  
4  
3  
2  
1

A No. FL - 29

42  
41  
40

