

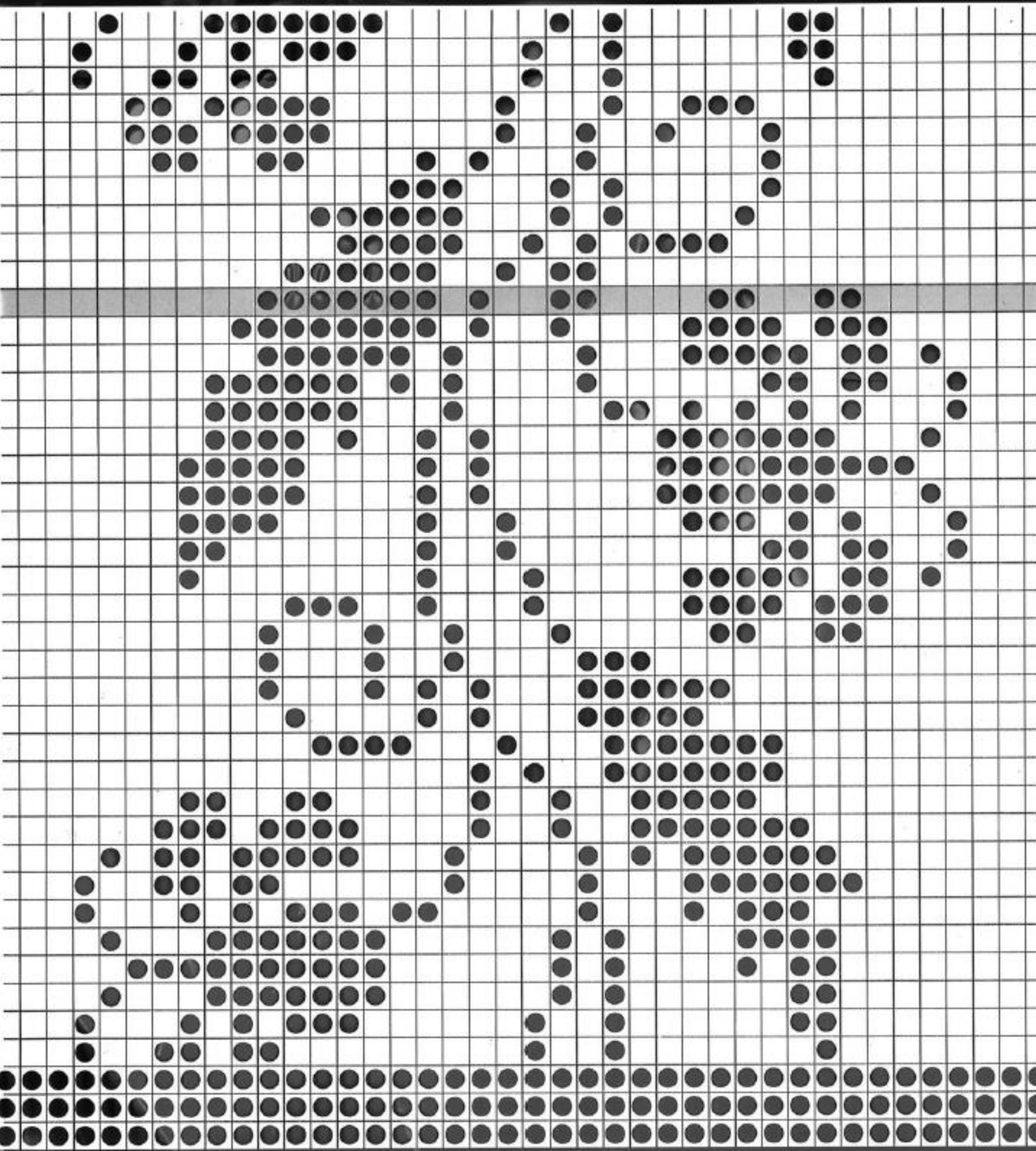


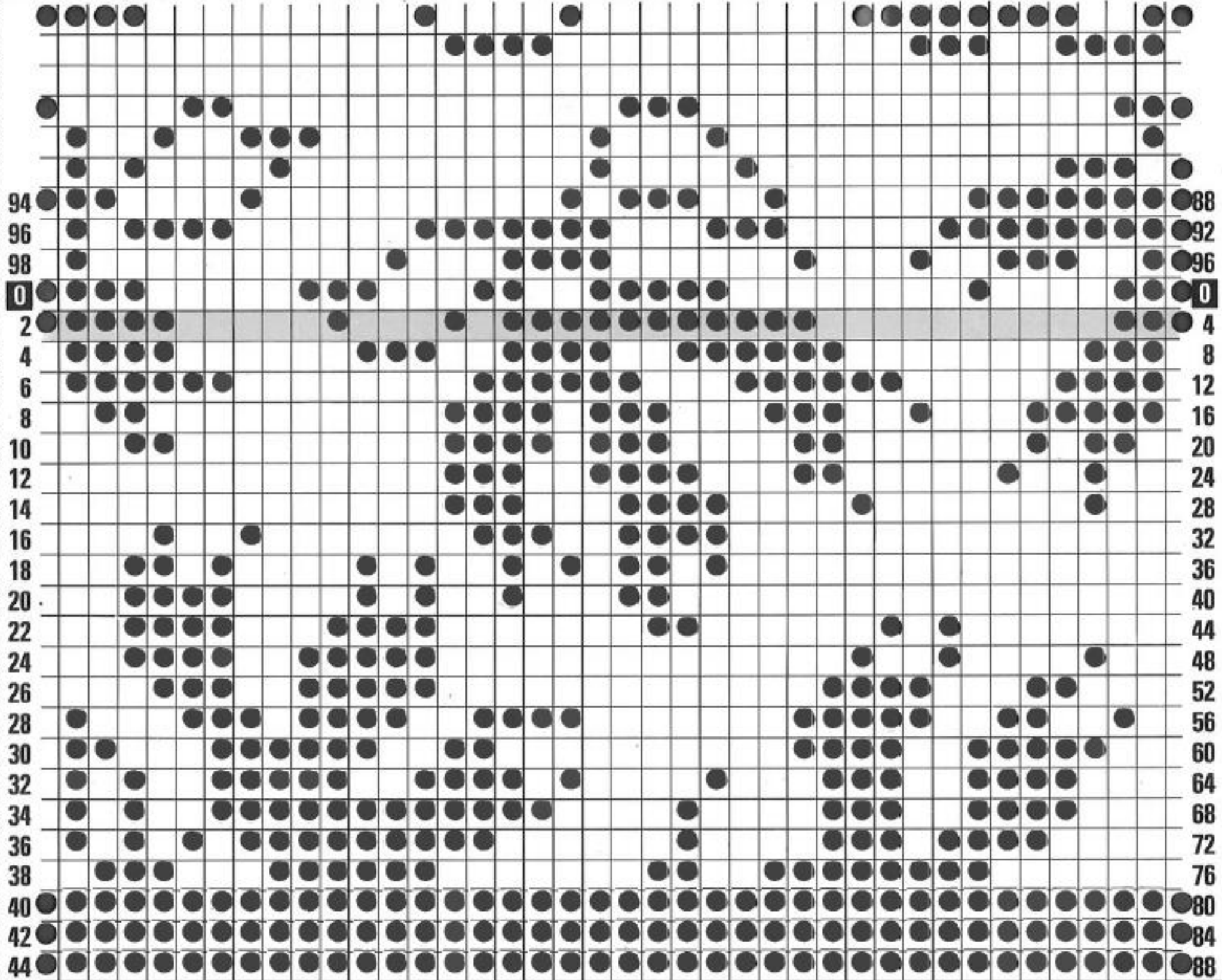
64
66
68
0
2
4
6
8
10
12
14
16
18
20
22
24
26
28
30
32
34
36
38
40
42
44
46
48
50
52
54
56
58
60
62

28
32
36
0
4
8
12
16
20
24
28
32
36
40
44
48
52
56
60
64
68
72
76
80
84
88
92
96
00
04
08
12
16
20
24

1

A

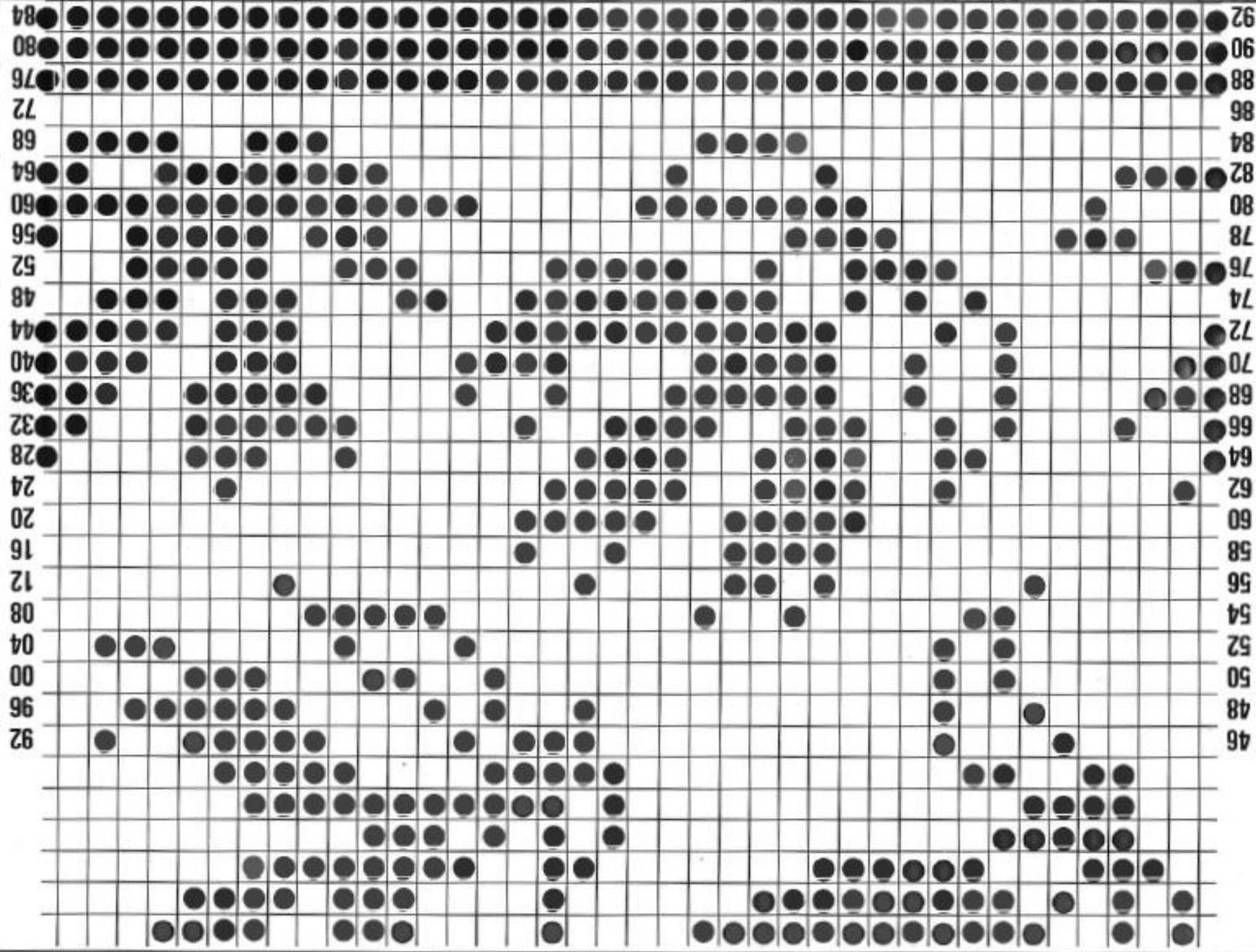




2a

A

2b



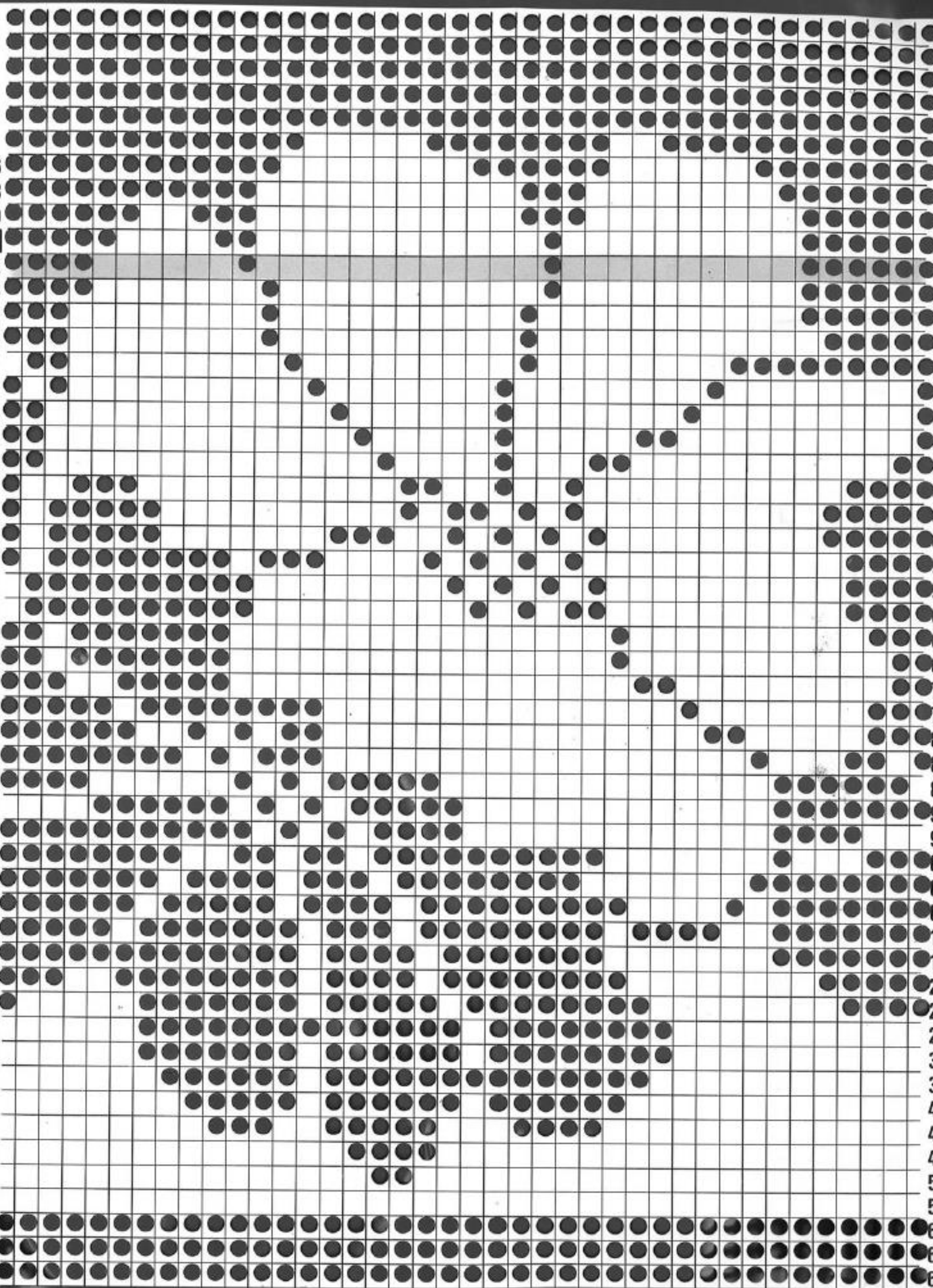


3

A

86
88
90
0
2
4
6
8
10
12
14
16
18
20
22
24
26
28
30
32
34
36
38
40
42
44
46
48
50
52
54
56
58
60
62
64
66
68
70
72
74
76
78
80
82
84

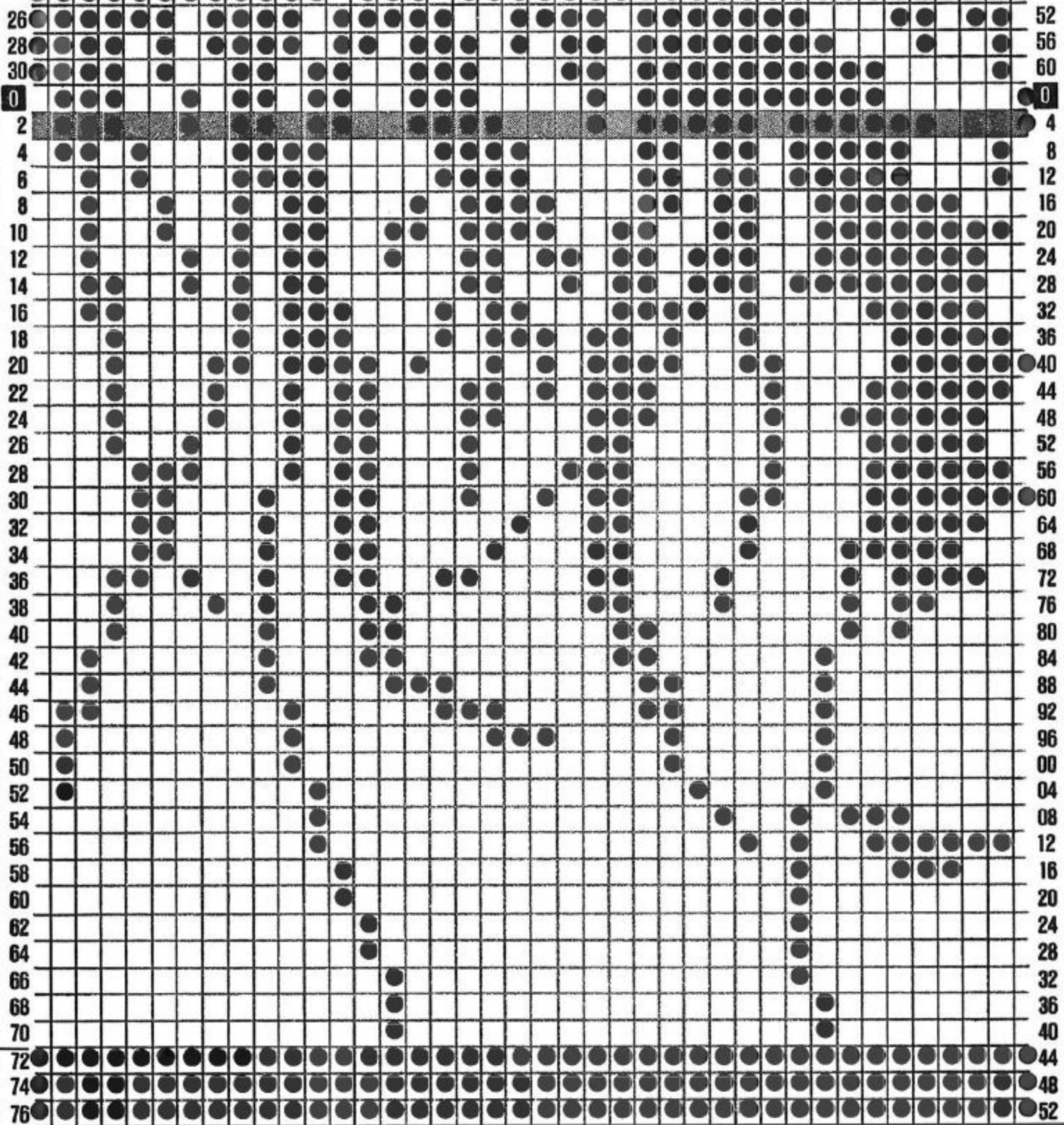
72
76
80
0
4
8
12
16
20
24
28
32
36
40
44
48
52
56
60
64
68
72
76
80
84
88
92
96
00
04
08
12
16
20
24
28
32
36
40
44
48
52
56
60
64
68





42

A



26
28
30
0
2
4
6
8
10
12
14
16
18
20
22
24
26
28
30
32
34
36
38
40
42
44
46
48
50
52
54
56
58
60
62
64
66
68
70
72
74
76

52
56
60
0
4
8
12
16
20
24
28
32
36
40
44
48
52
56
60
64
68
72
76
80
84
88
92
96
00
04
08
12
16
20
24
28
32
36
40
44
48
52

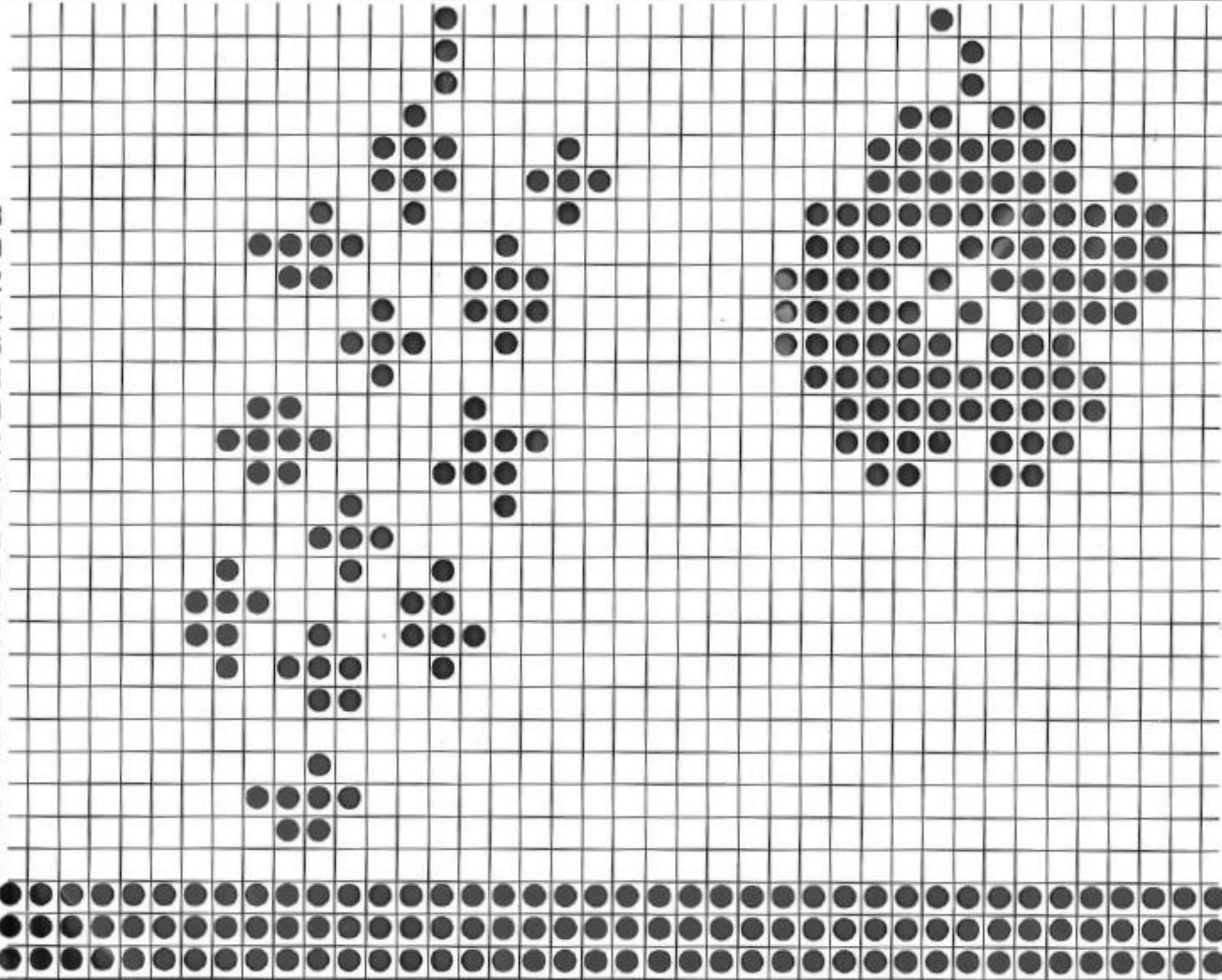
89L
ZH



78
80
82
84
86
88
90
92
94
96
98
00
02
04
06
08
10
12
14
16
18
20
22
24

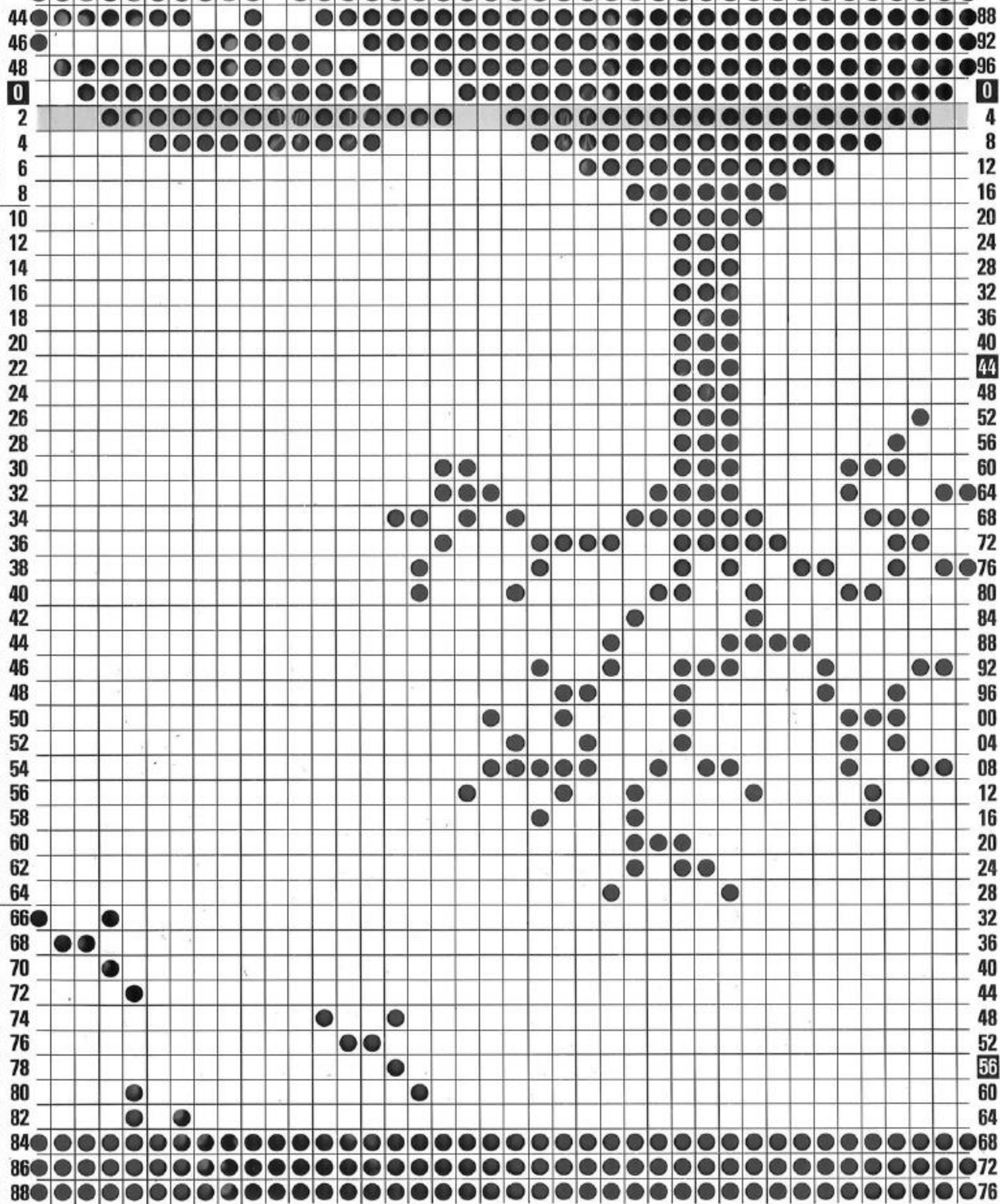
56
60
64
68
72
76
80
84
88
92
96
00
04
08
12
16
20
24
28
32
36
40
44
48

4b





5a
A



44
RZ

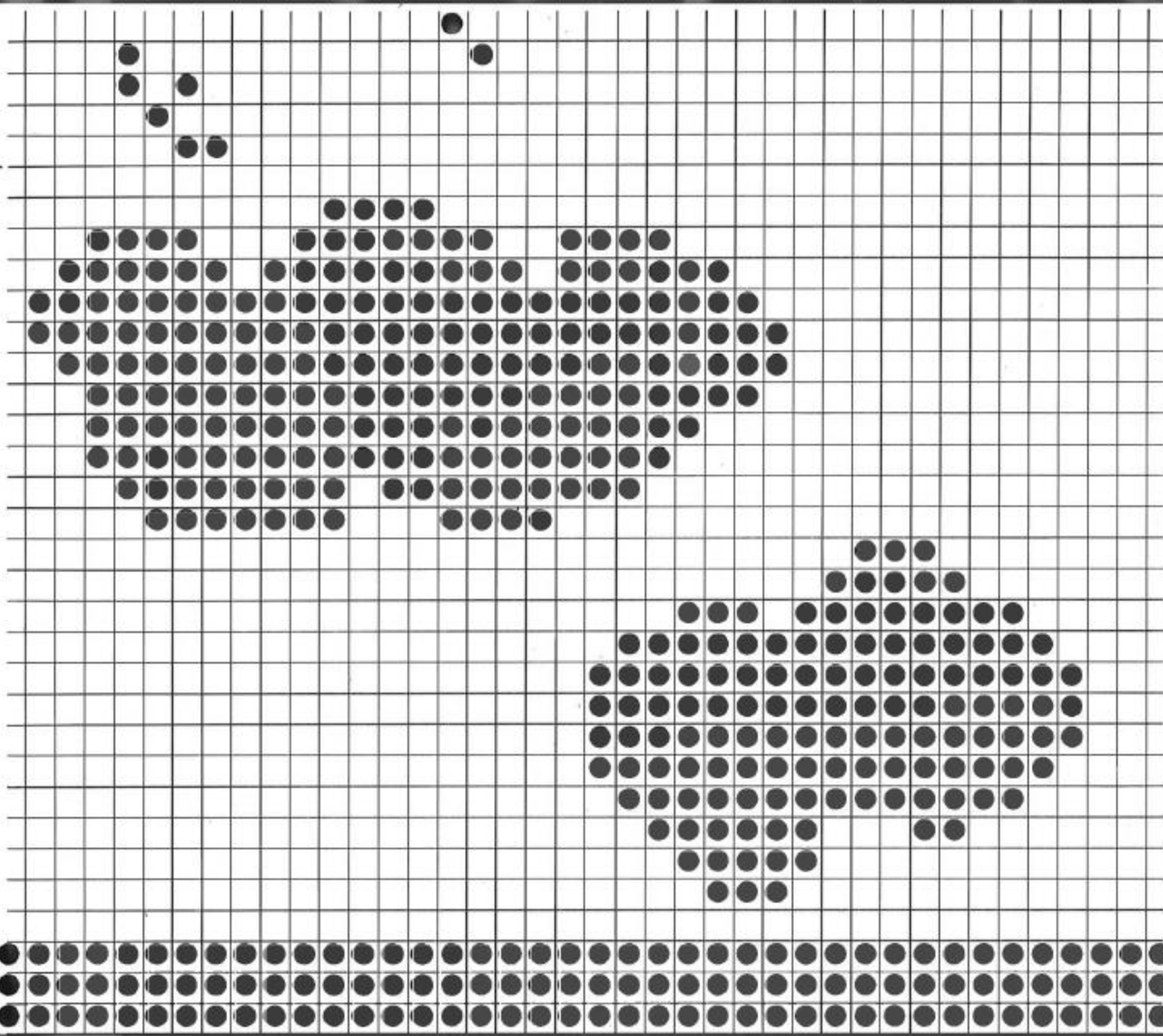
991
RZ

88
92
96
0
4
8
12
16
20
24
28
32
36
40
44
48
52
56
60
64
68
72
76
80
84
88
92
96
00
04
08
12
16
20
24
28
32
36
40
44
48
52
56
60
64
68
72
76



00Z
RZ

90
92
94
96
98
00
02
04
06
08
10
12
14
16
18
20
22
24
26
28
30
32
34
36
38
40
42



80
84
88
92
96
00
04
08
12
16
20
24
28
32
36
40
44
48
52
56
60
64
68
72
76
80
84

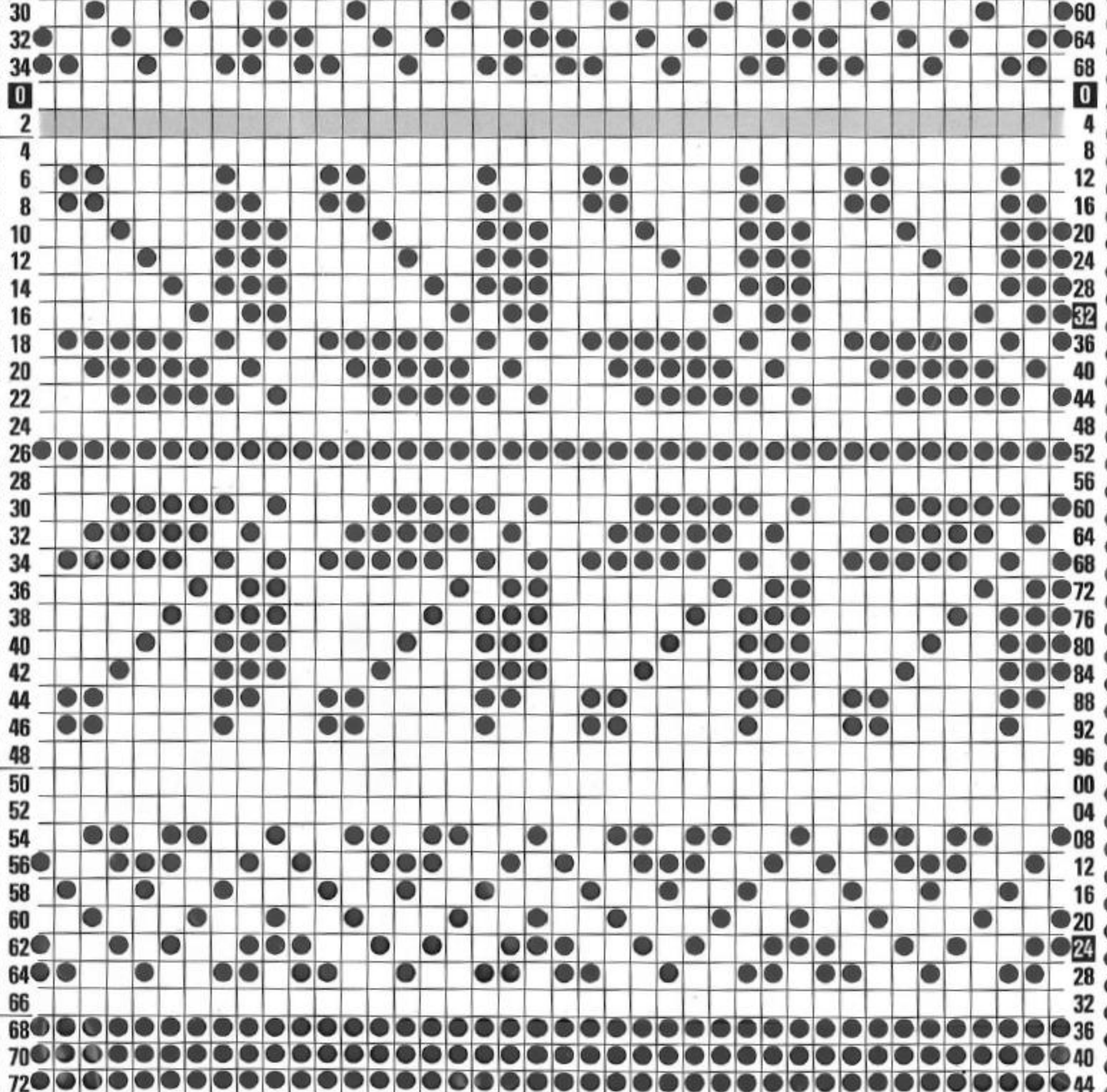


5b



6a

A



32

RZ

124

RZ

160

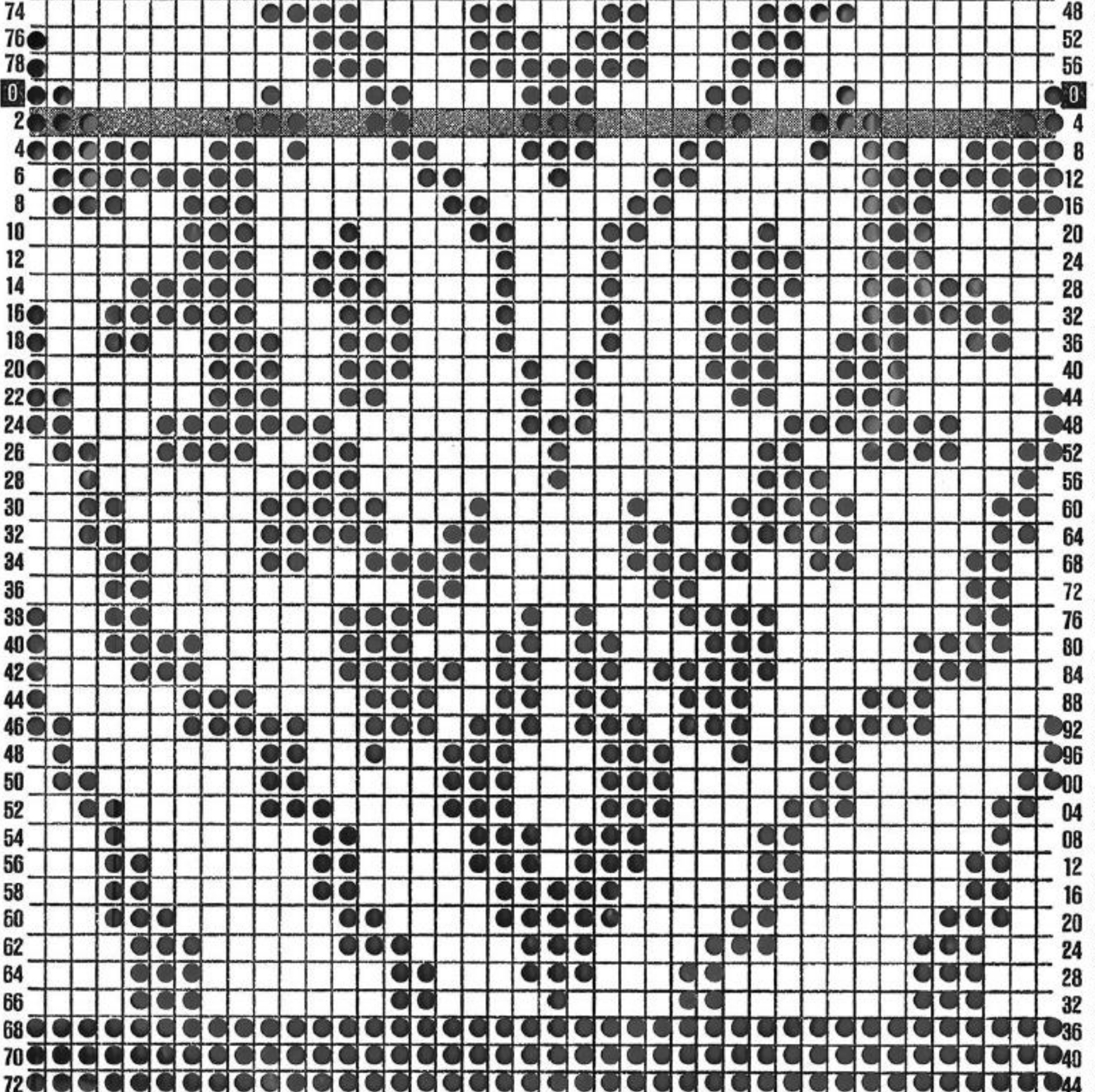
RZ

60 64 68 0 4 8 12 16 20 24 28 32 36 40 44 48 52 56 60 64 68 72 76 80 84 88 92 96 00 04 08 12 16 20 24 28 32 36 40 44



7

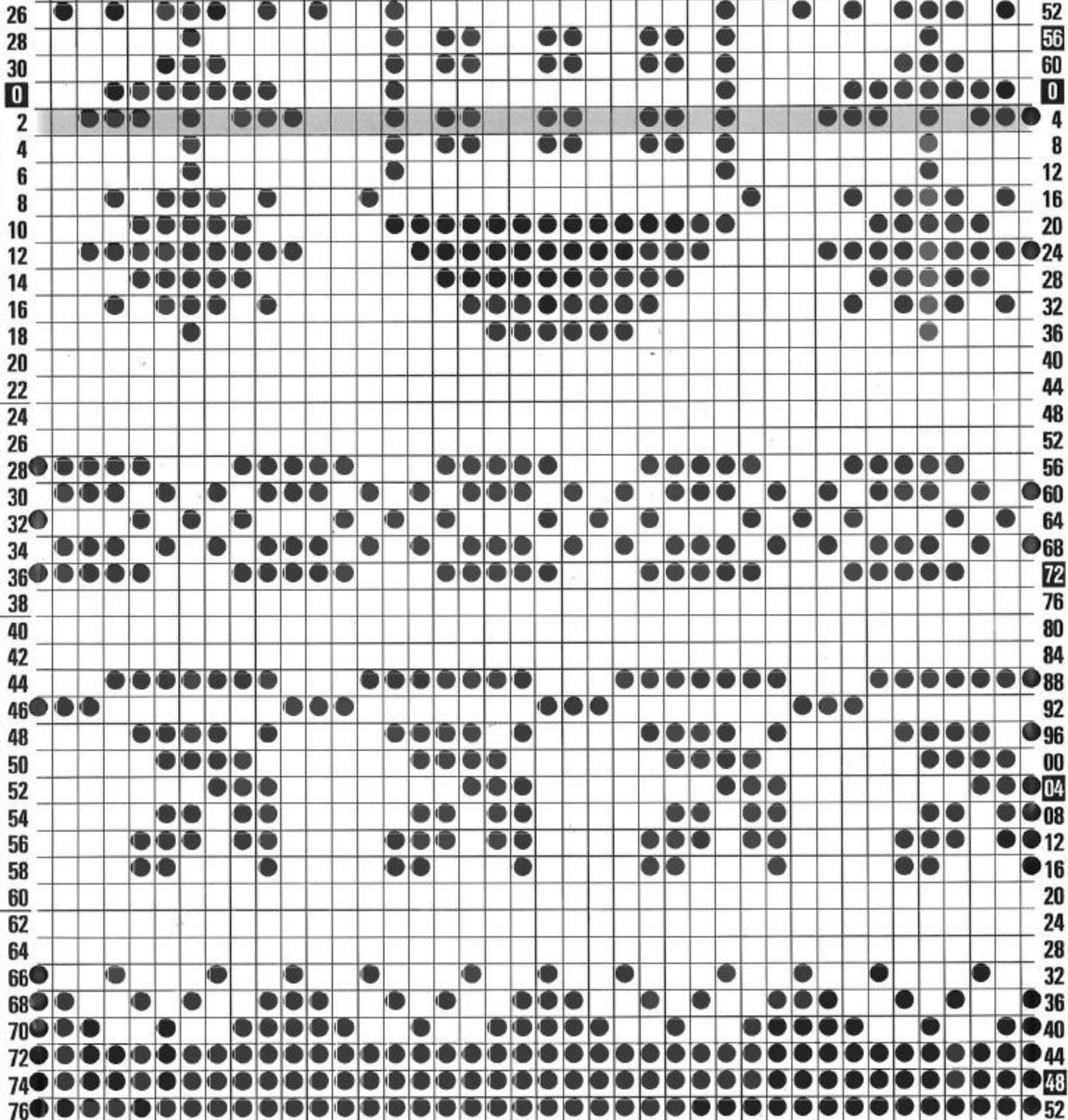
A





8a

A



72

RZ

104

RZ

148

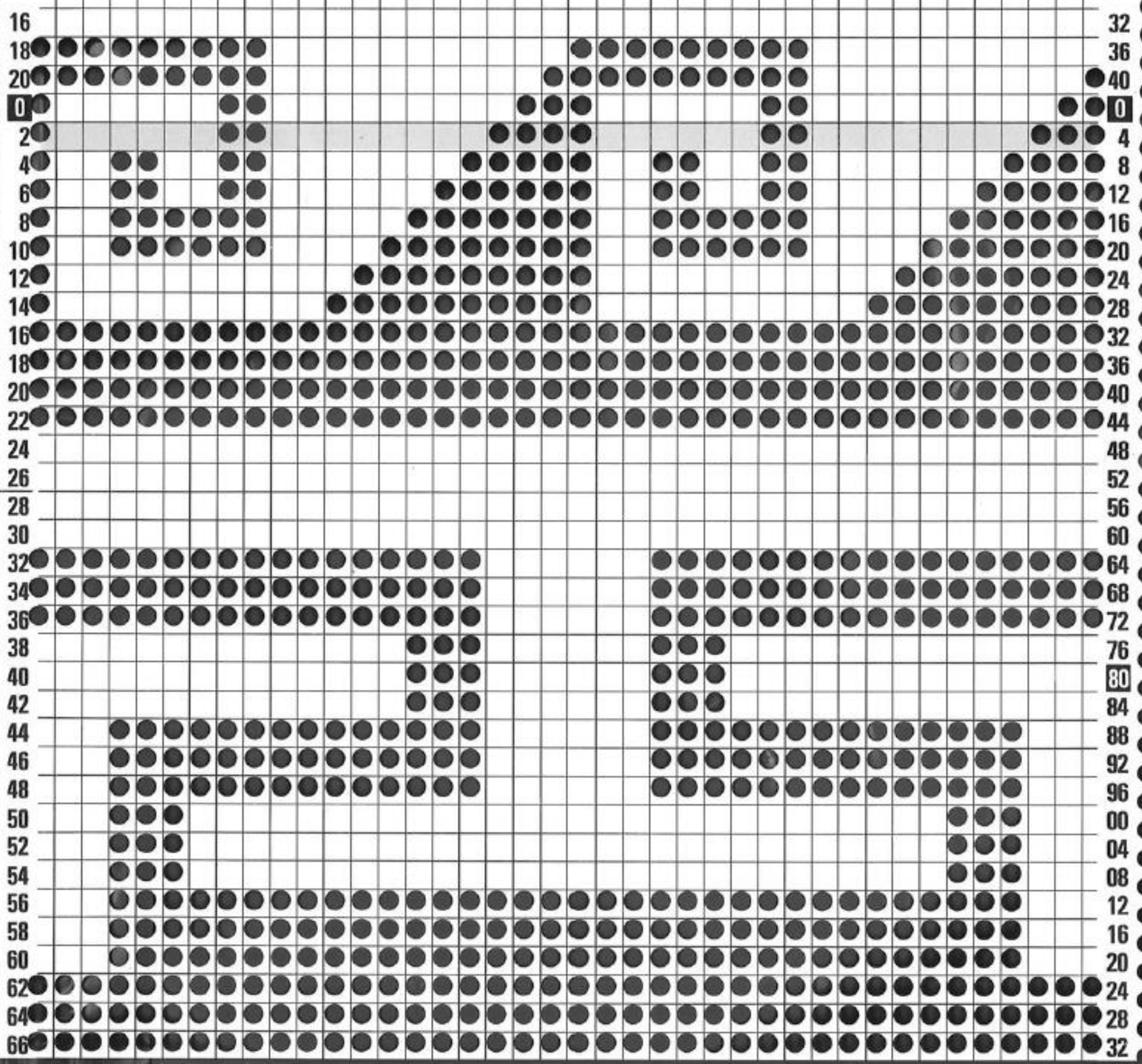
RZ

52
56
60
0
4
8
12
16
20
24
28
32
36
40
44
48
52
56
60
64
68
72
76
80
84
88
92
96
00
04
08
12
16
20
24
28
32
36
40
44
48
52



9a

A

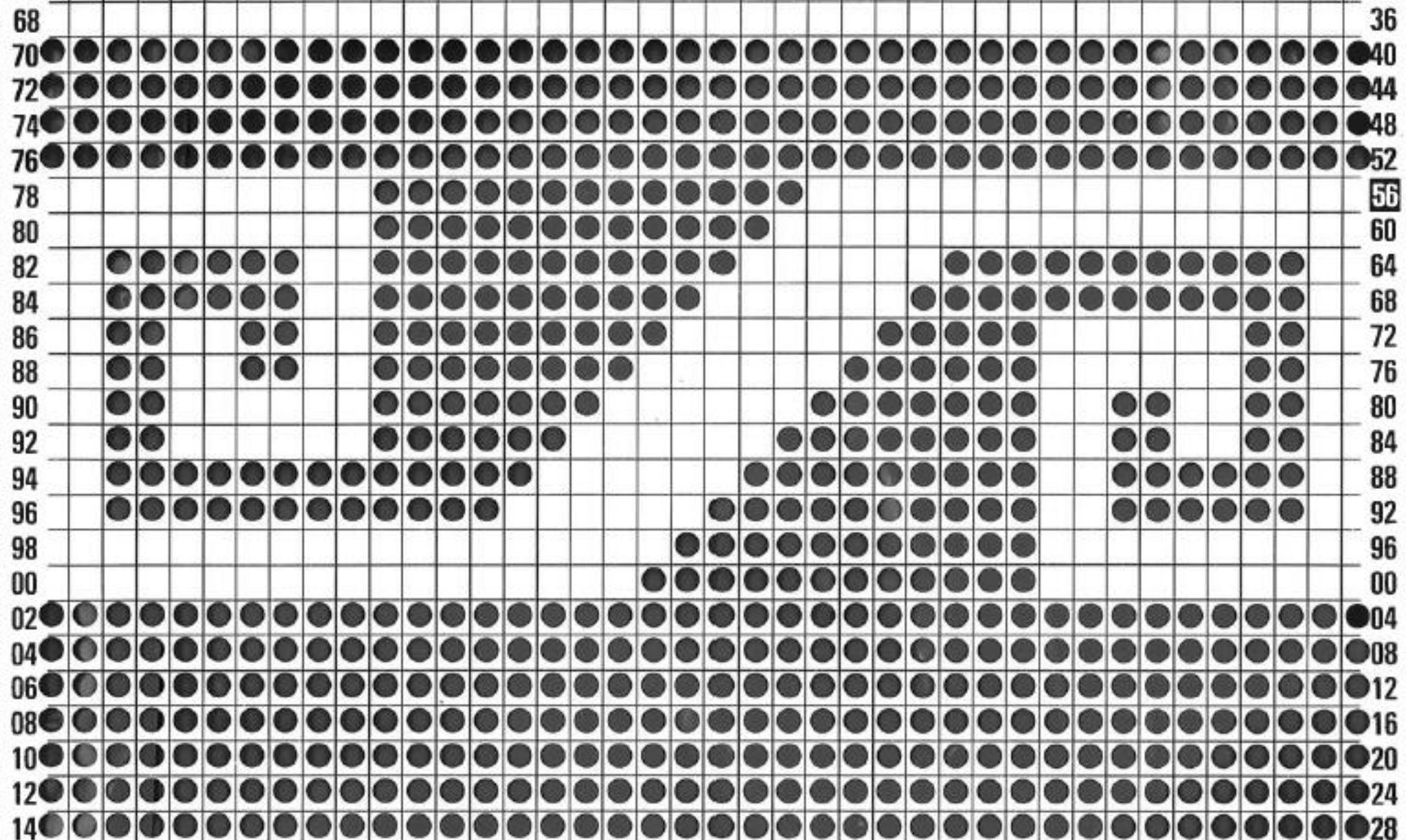


08
RZ

32
36
40
44
48
52
56
60
64
68
72
76
80
84
88
92
96
00
04
08
12
16
20
24
28
32



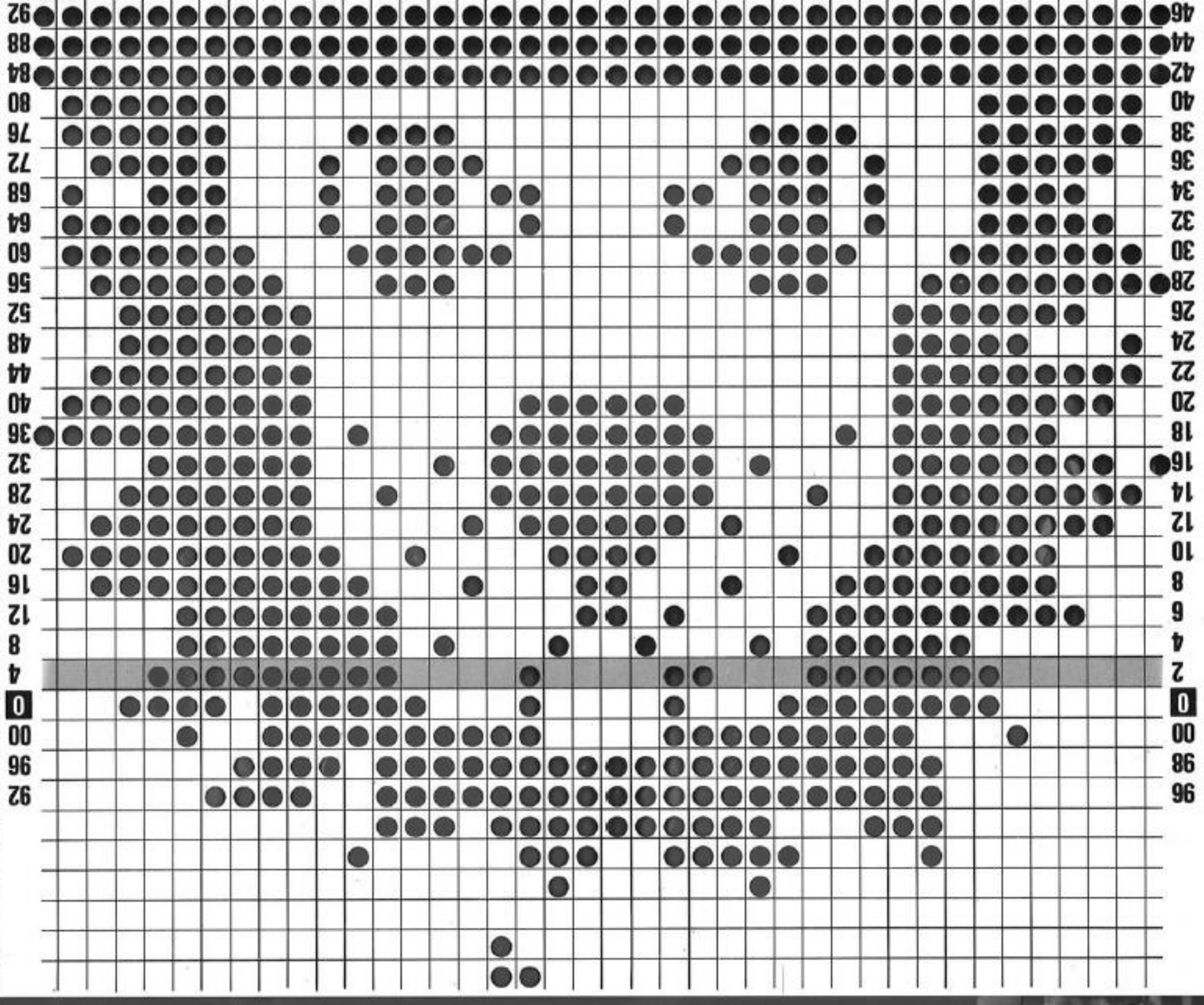
96 ZH



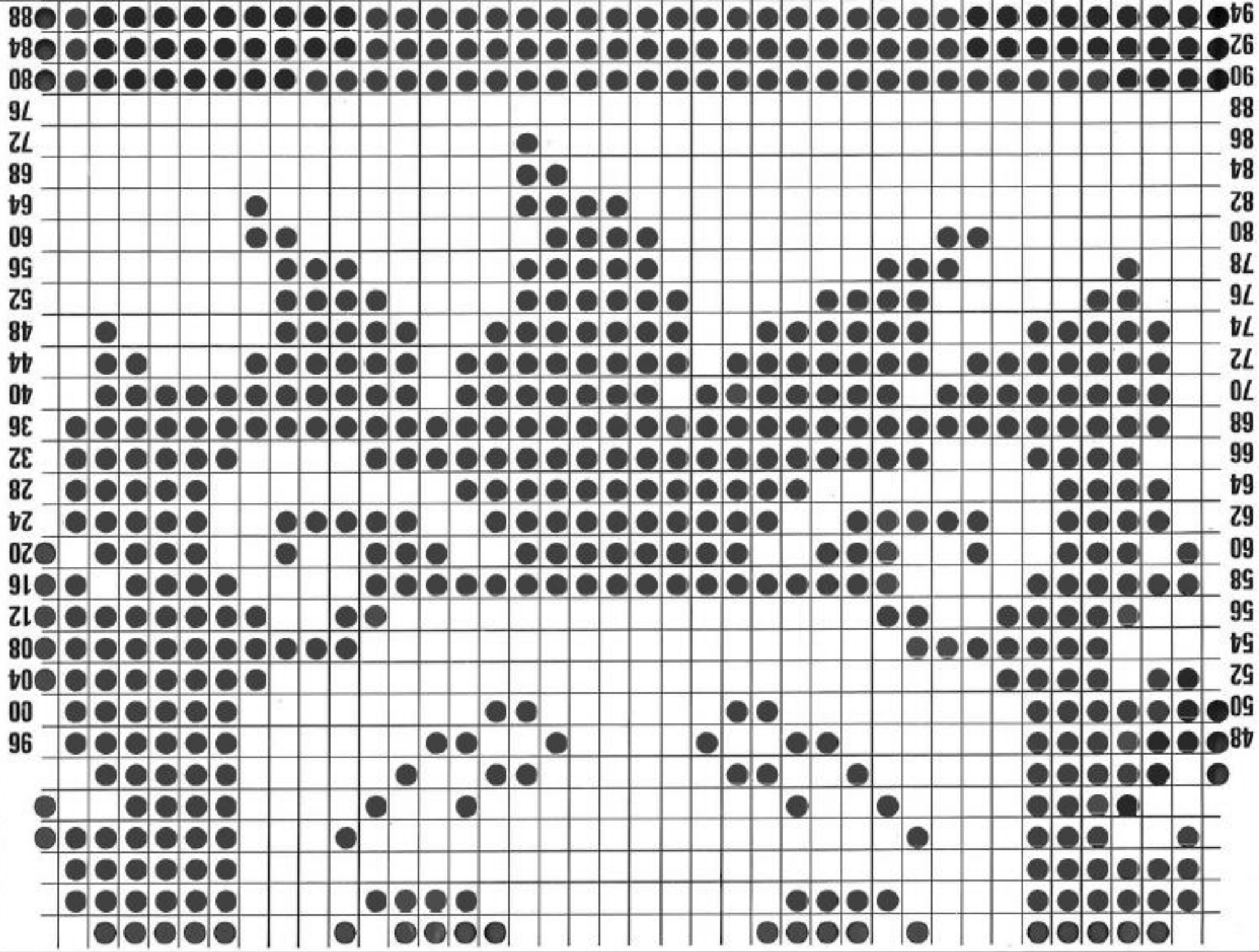
96

36
40
44
48
52
56
60
64
68
72
76
80
84
88
92
96
00
04
08
12
16
20
24
28

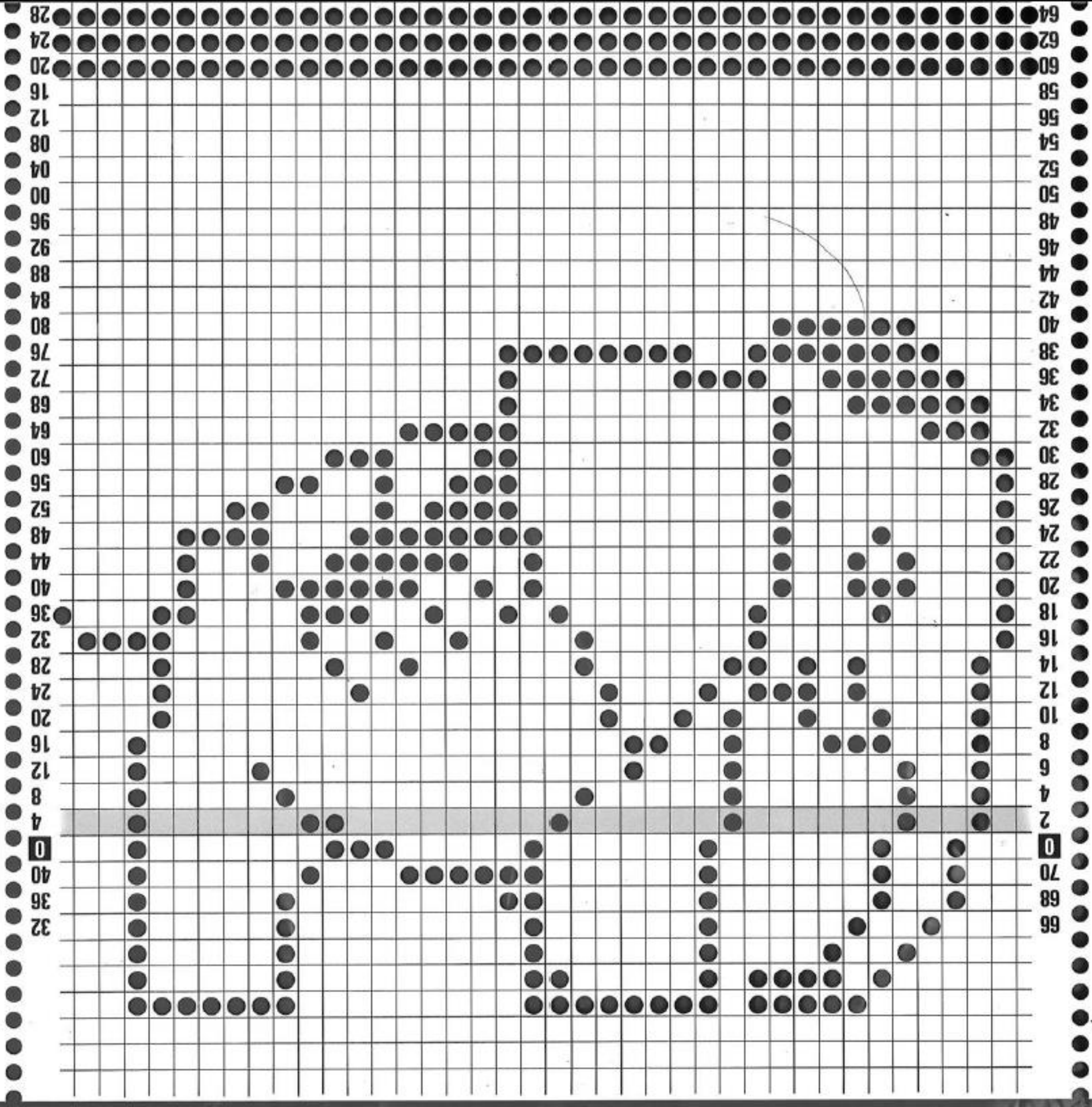
12a A



12b



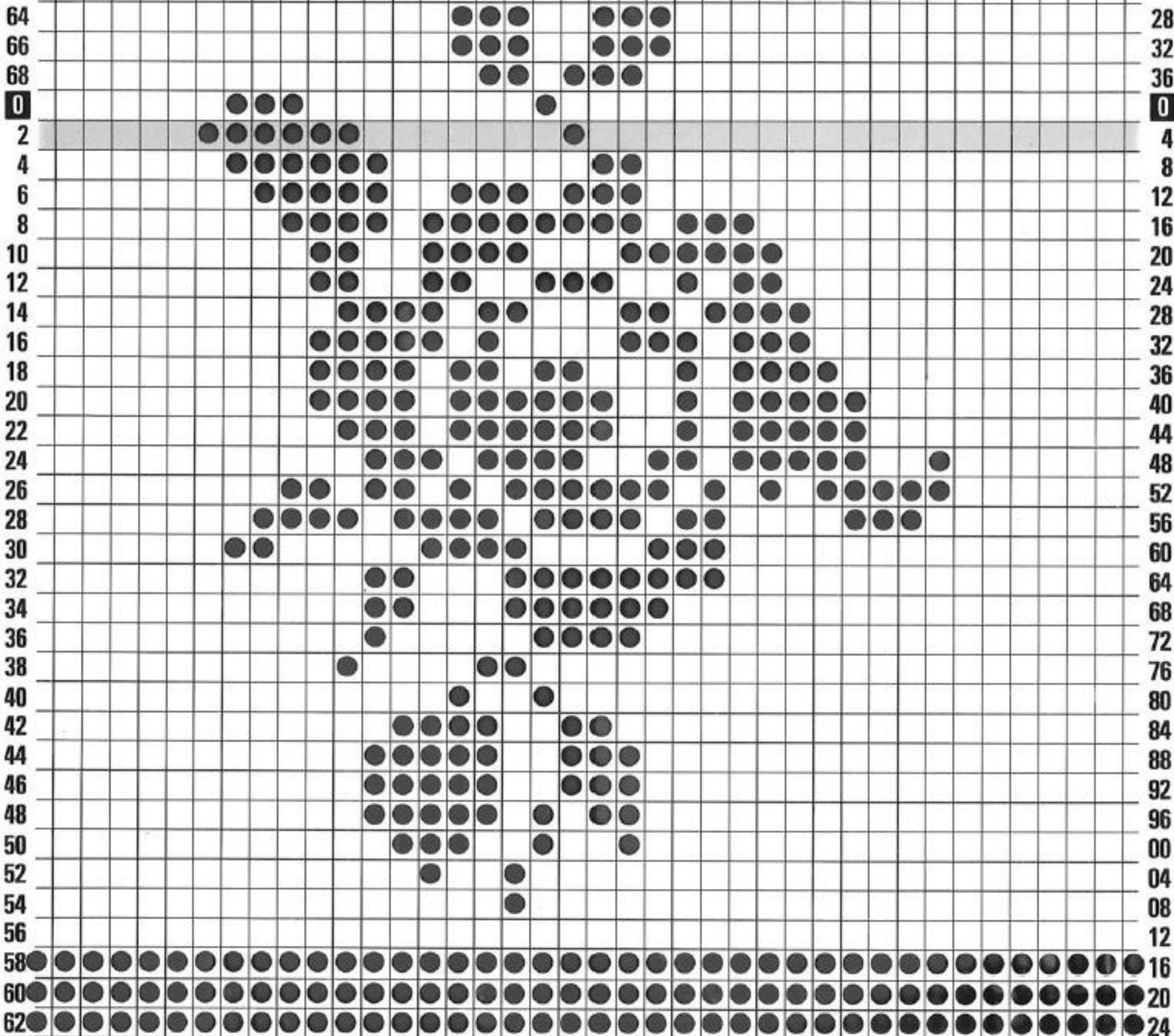
13 A





14

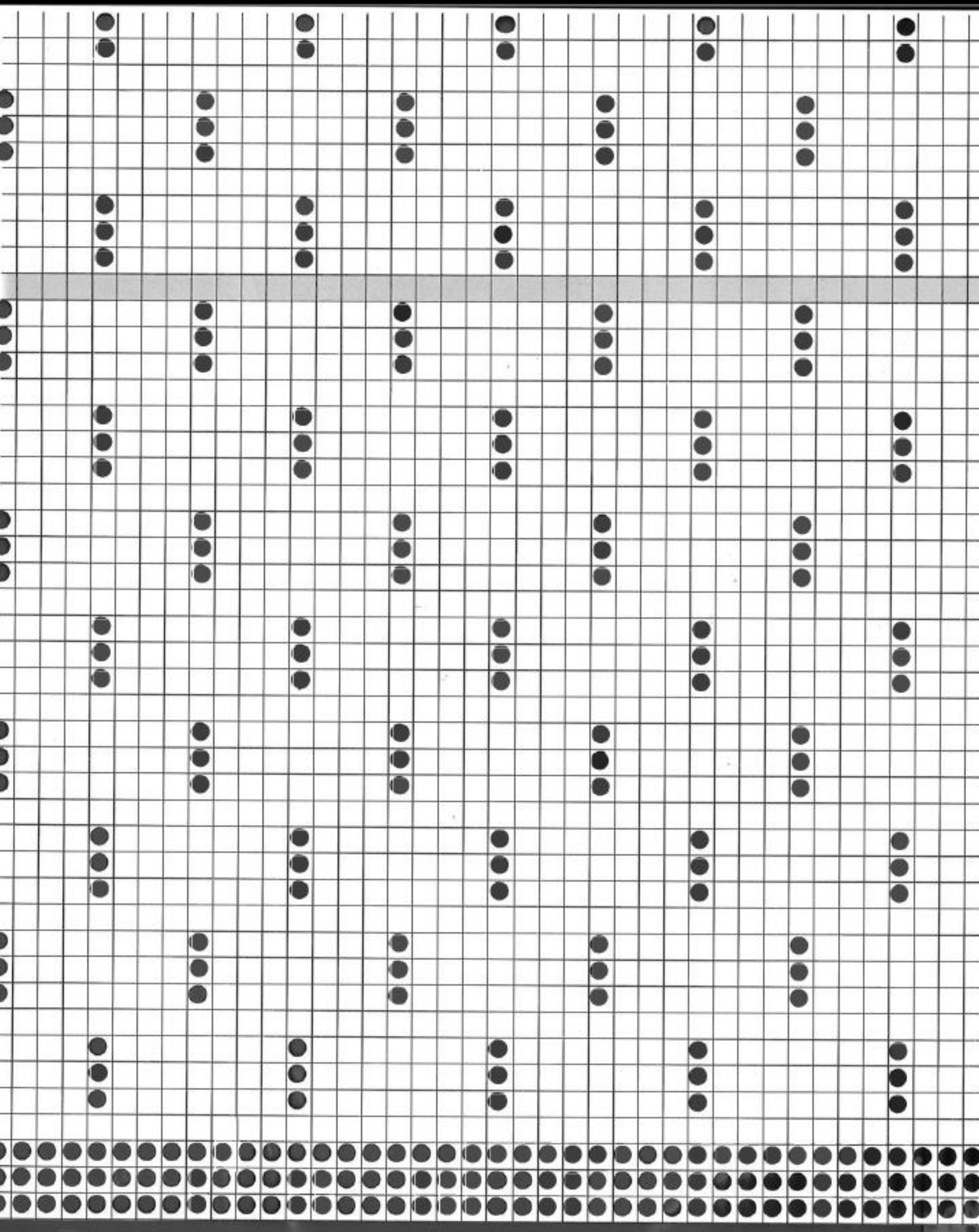
A



17

B1

74
76
78
0
2
4
6
8
10
12
14
16
18
20
22
24
26
28
30
32
34
36
38
40
42
44
46
48
50
52
54
56
58
60
62
64
66
68
70
72



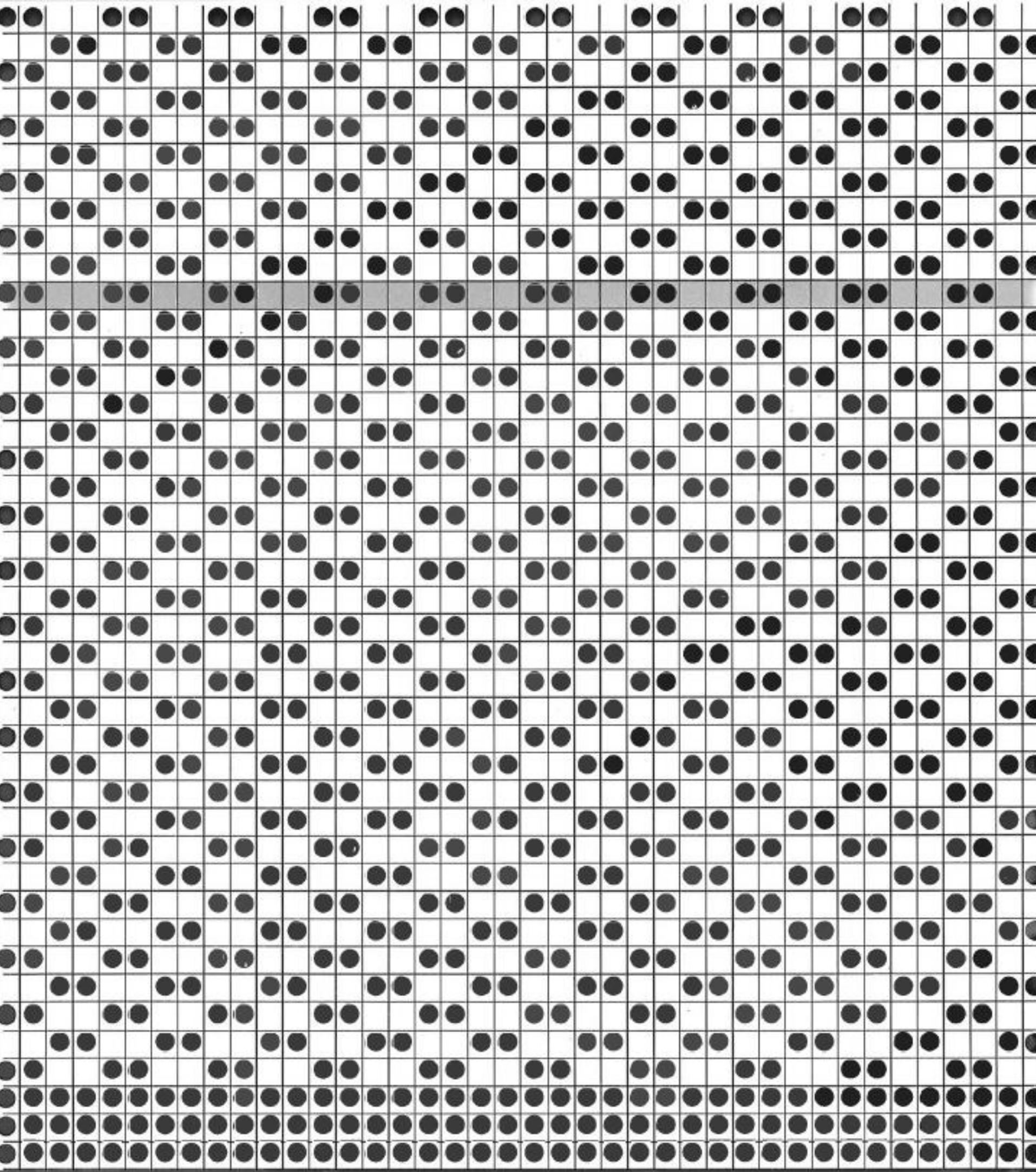


66
68
70
0
2
4
6
8
10
12
14
16
18
20
22
24
26
28
30
32
34
36
38
40
42
44
46
48
50
52
54
56
58
60
62
64

32
36
40
0
4
8
12
16
20
24
28
32
36
40
44
48
52
56
60
64
68
72
76
80
84
88
92
96
00
04
08
12
16
20
24
28

18

B2 C E F





90
92
94
0
2
4
6
8
10
12
14
16
18
20
22
24
26
28
30
32
34
36
38
40
42
44
46
48
50
52
54
56
58
60
62
64
66
68
70
72
74
76
78
80
82
84
86
88

80
84
88
0
4
8
12
16
20
24
28
32
36
40
44
48
52
56
60
64
68
72
76
80
84
88
92
96
00
04
08
12
16
20
24
28
32
36
40
44
48
52
56
60
64
68
72
76

