

電子編機

付属模様集

模様カード
NO.1~NO.10

ELECTRONIC KNITTING MACHINE

PATTERN COLLECTION

PATTERN CARDS
NO.1~NO.10

- * ここに掲載されている模様は、付属模様カードで編むことの出来るものうちの一部分です。これらの模様以外にも、編み方や模様キー、模様幅目盛を変化させることによって、更に沢山の模様を編むことができます。
- * 写真右下の数字は1模様の目数と段数を示しています。(例22S×24R.....22目×24段=1模様)
- * Sample patterns are knitted with the enclosed Pattern Cards. Besides these samples, you can knit more patterns by changing the settings of Cam Lever, Pattern Switches or Pattern Width Indicator.
- * The numbers of stitches and rows are indicated below each picture.(S.....stitches, R.....rows)

編込み模様編 FAIR ISLE(KNIT-IN)

No.2 (13)



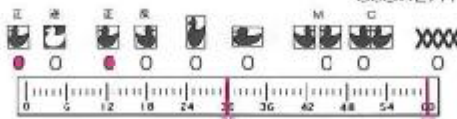
24S×54R



No.2 (14)



30S×27R



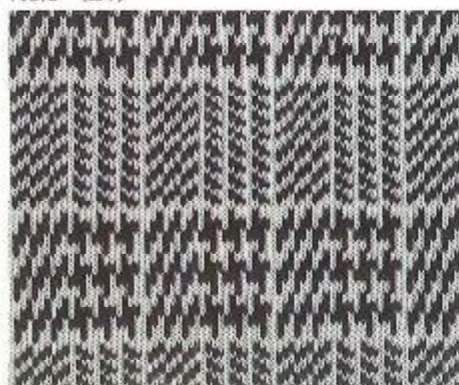
No.2 (17)



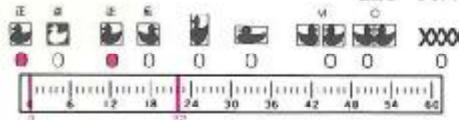
24S×30R



No.3 (21)



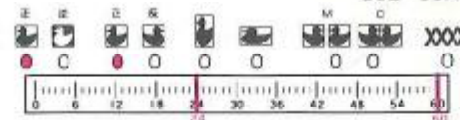
22S×50R



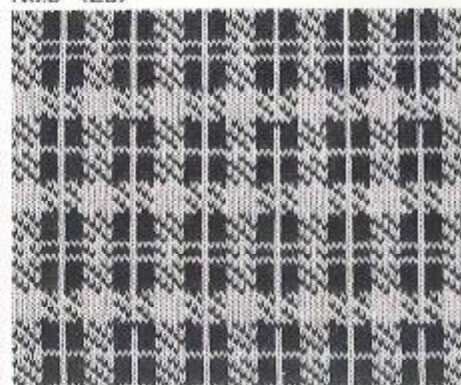
No.3 (22)



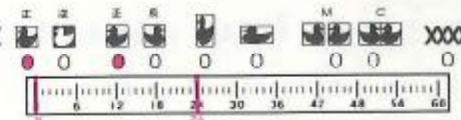
36S×50R



No.3 (23)



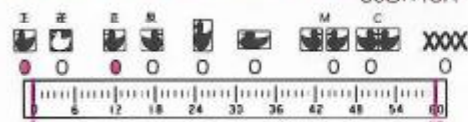
24S×41R



No.3 (25)



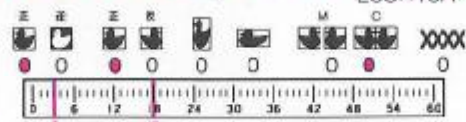
60Sx18R



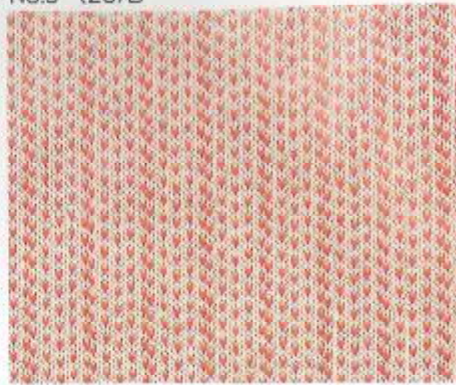
No.3 (25)A



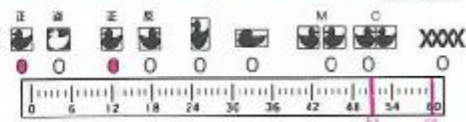
28Sx18R



No.3 (25)B



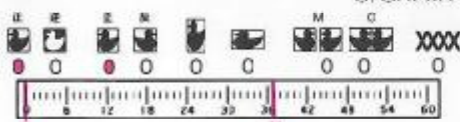
9Sx3R



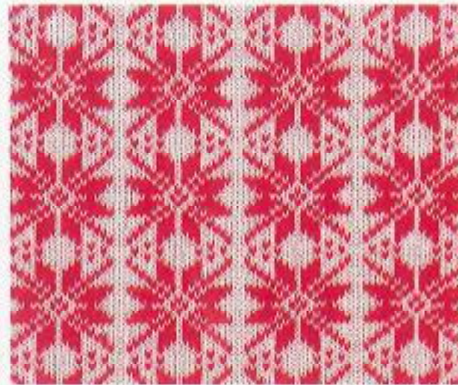
No.3 (26)



37Sx20R



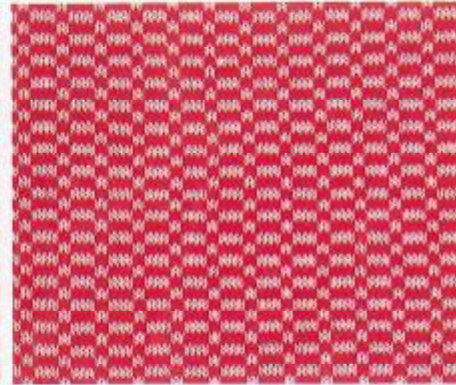
No.3 (26)A



19Sx20R



No.3 (26)B



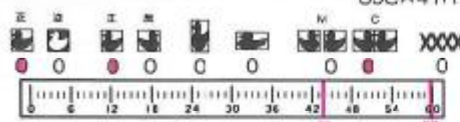
6Sx4R



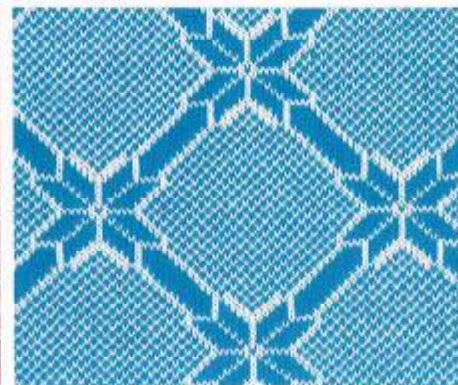
No.3 (24)



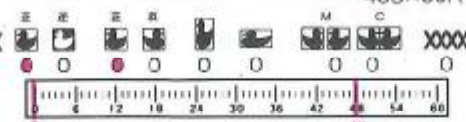
30Sx41R



No.4 (27)



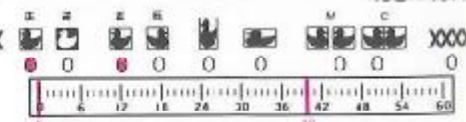
48Sx50R



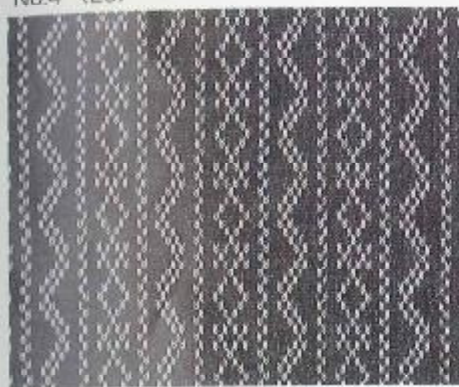
No.4 (28)



40Sx40R



No.4 (29)



25S×20R



No.4 (30)



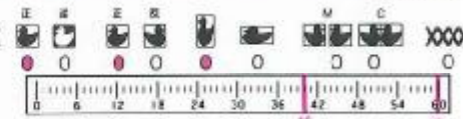
20S×20R



No.4 (30)



20S×40R



No.5 (33)



24S×60R



No.5 (35)



28S×36R



No.5 (37)



20S×22R



No.6 (39)



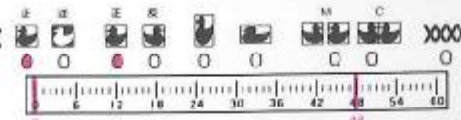
32S×64R



No.7 (42)



48S×54R



No.8 (45)

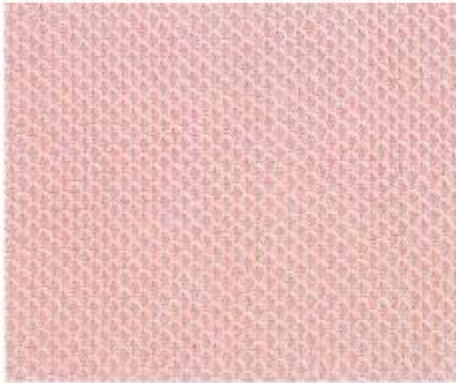


22S×24R



引き上げ編 TUCK STITCH

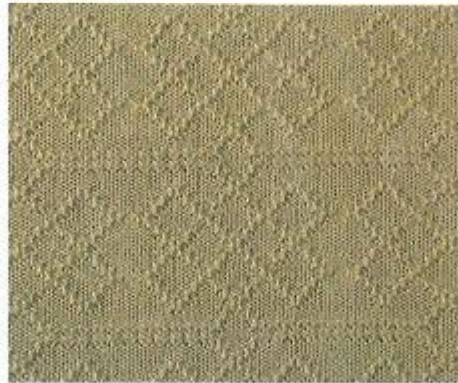
No.1 (5)



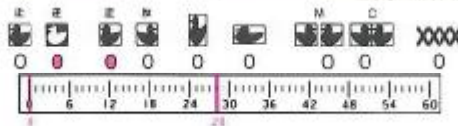
4Sx8R



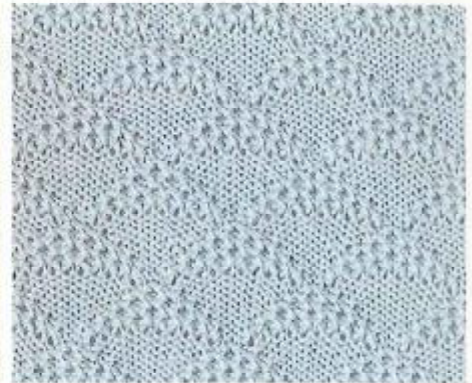
No.1 (9)



28Sx48R



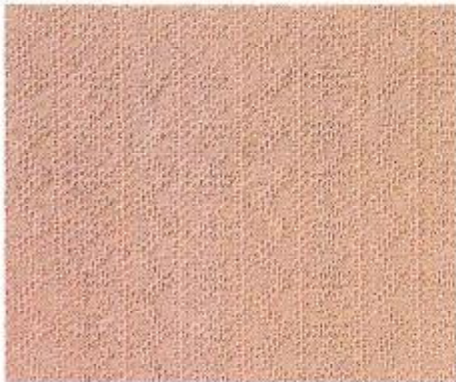
No.1 (12)



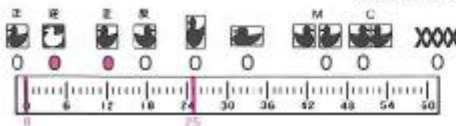
12Sx20R



No.4 (29)



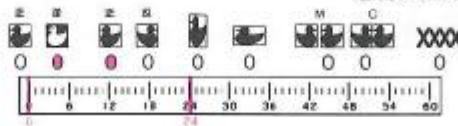
25Sx20R



No.5 (32)



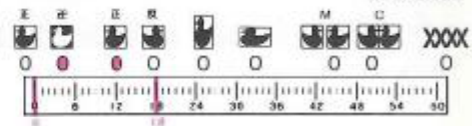
24Sx60R



No.5 (34)



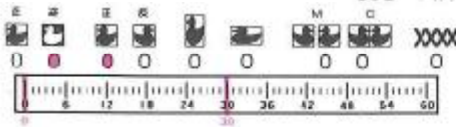
18Sx36R



No.5 (36)



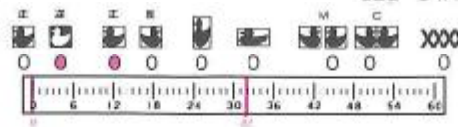
30Sx44R



No.6 (39)



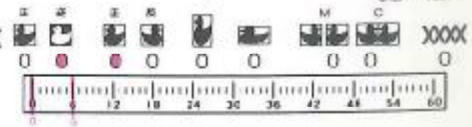
32Sx64R



No.7 (41)

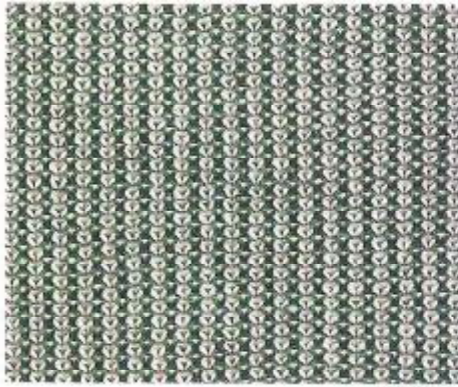


6Sx12R



配色引き上げ編 TUCK STITCH IN COLOURS

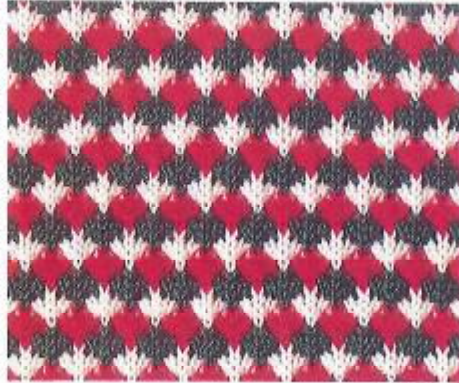
No.1 (2)



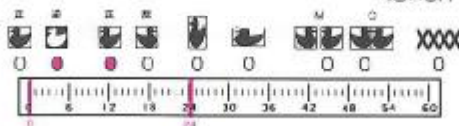
2Sx4R



No.1 (5)



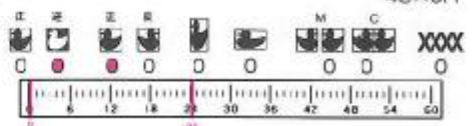
4Sx8R



No.1 (5)

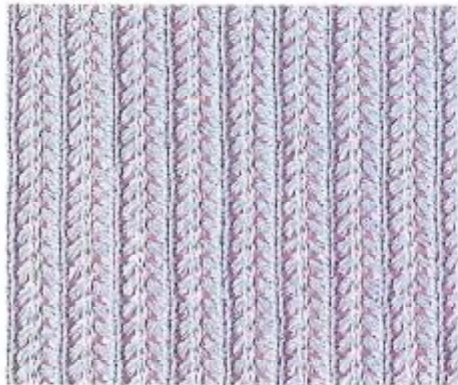


4Sx8R

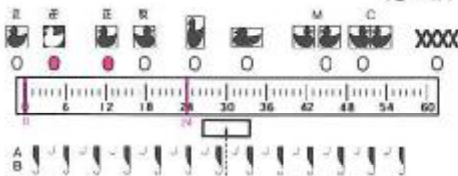


針抜き引き上げ編 TUCK LACE

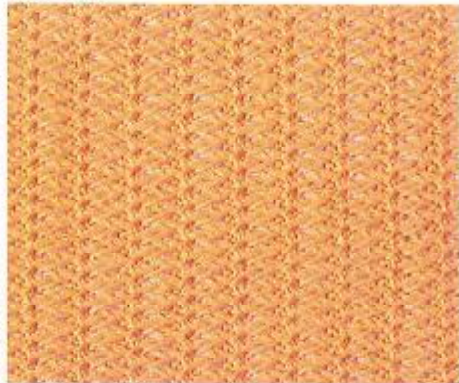
No.1 (3)



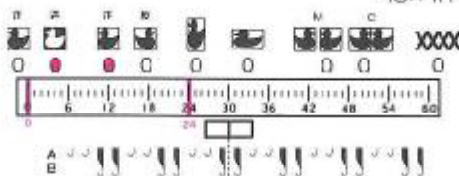
4Sx4R



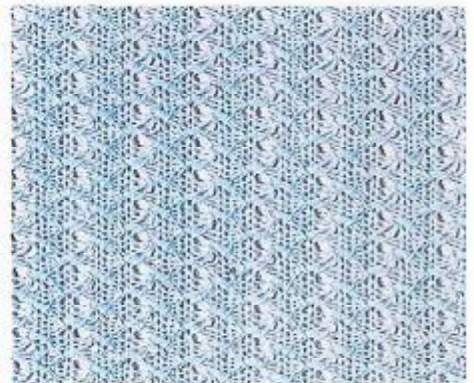
No.1 (3)



4Sx4R



No.1 (5)

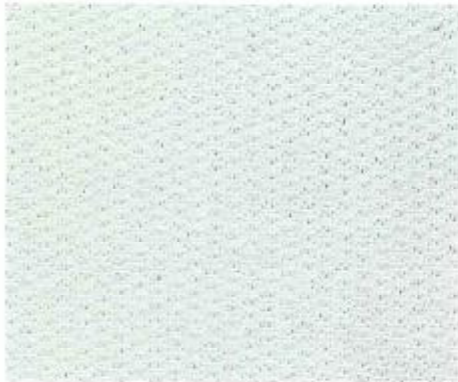


4Sx8R

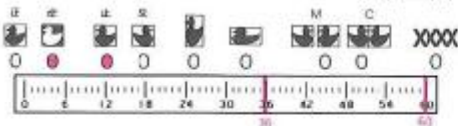


すべり目編 SLIP STITCH

No.1 (4)



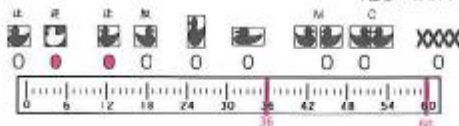
4Sx4R



No.1 (12)



12Sx20R



No.2 (16)



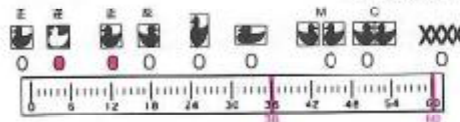
28Sx28R



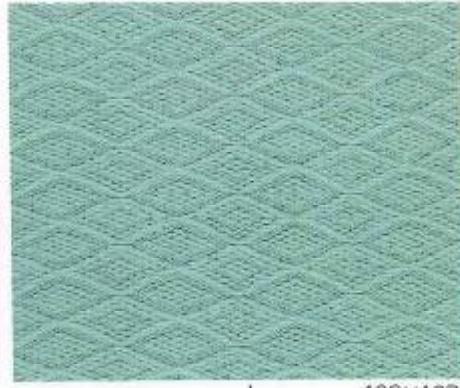
No.2 (18)



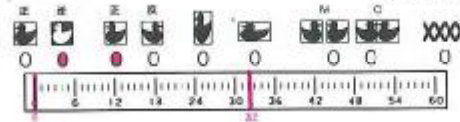
24Sx30R



No.2 (19)



16Sx16R



No.2 (20)



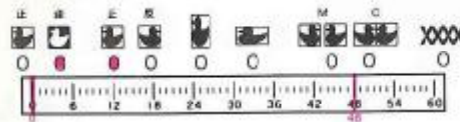
5Sx16R



No.4 (31)



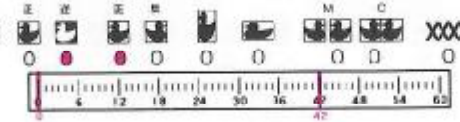
48Sx20R



No.7 (43)



42Gx34R



No.8 (45)



22Sx24R

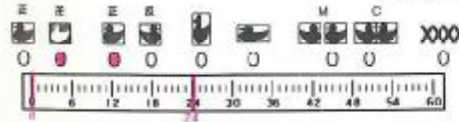


配色すべり目編 SLIP STITCH IN COLOURS

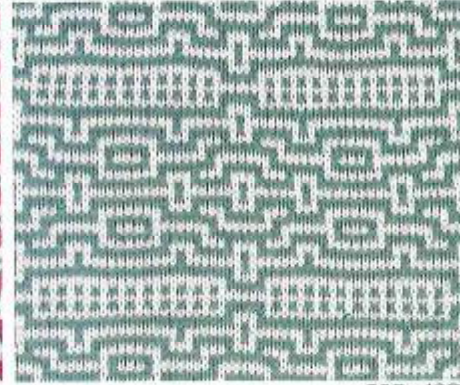
No.1 (5)



4Sx8R



No.1 (9)



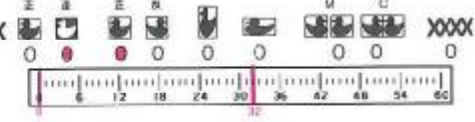
28Sx48R



No.6 (39)



32Sx64R

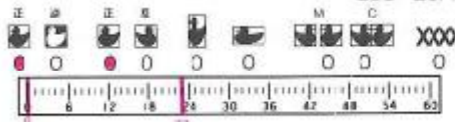


マジックポイント編 SINGLE MOTIF

No.2 (15)



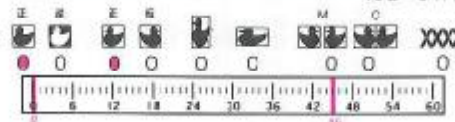
23S×28R



No.9 (47)



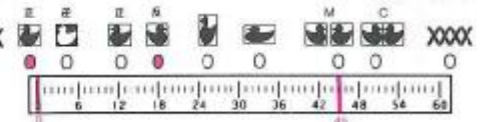
45S×91R



No.9 (48)

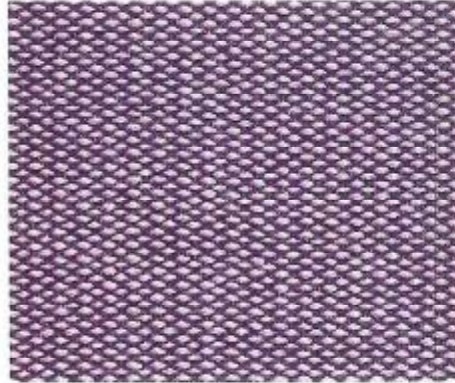


45S×45R

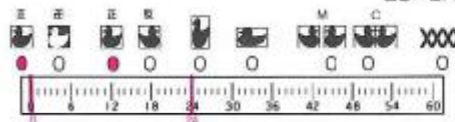


スレッド編 WEAVING

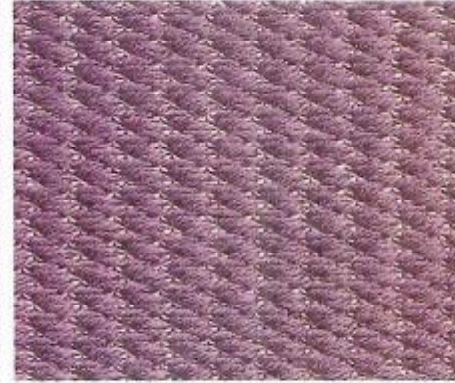
No.1 (1)



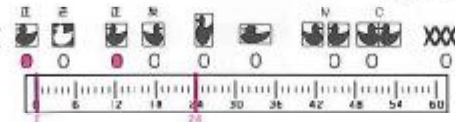
2S×2R



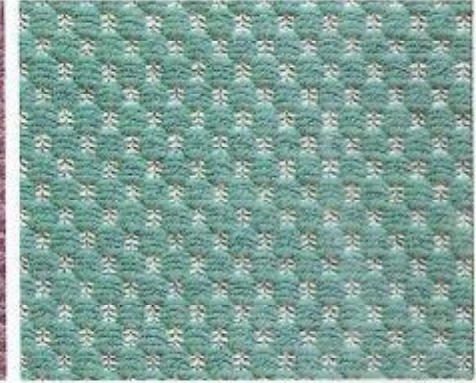
No.1 (3)



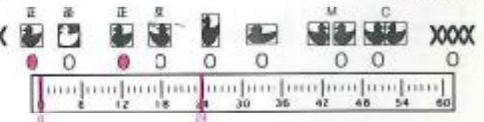
4S×4R



No.1 (5)



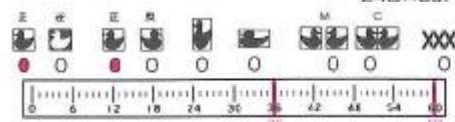
4S×8R



No.2 (18)



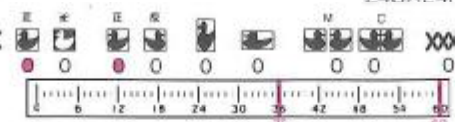
24S×30R



No.8 (46)



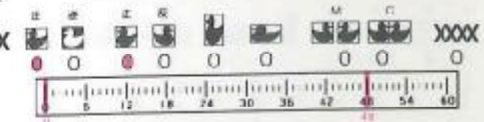
24S×24R



No.10 (50)



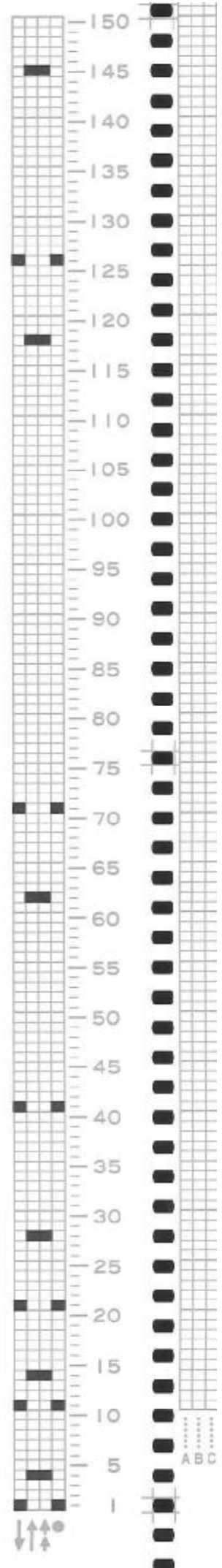
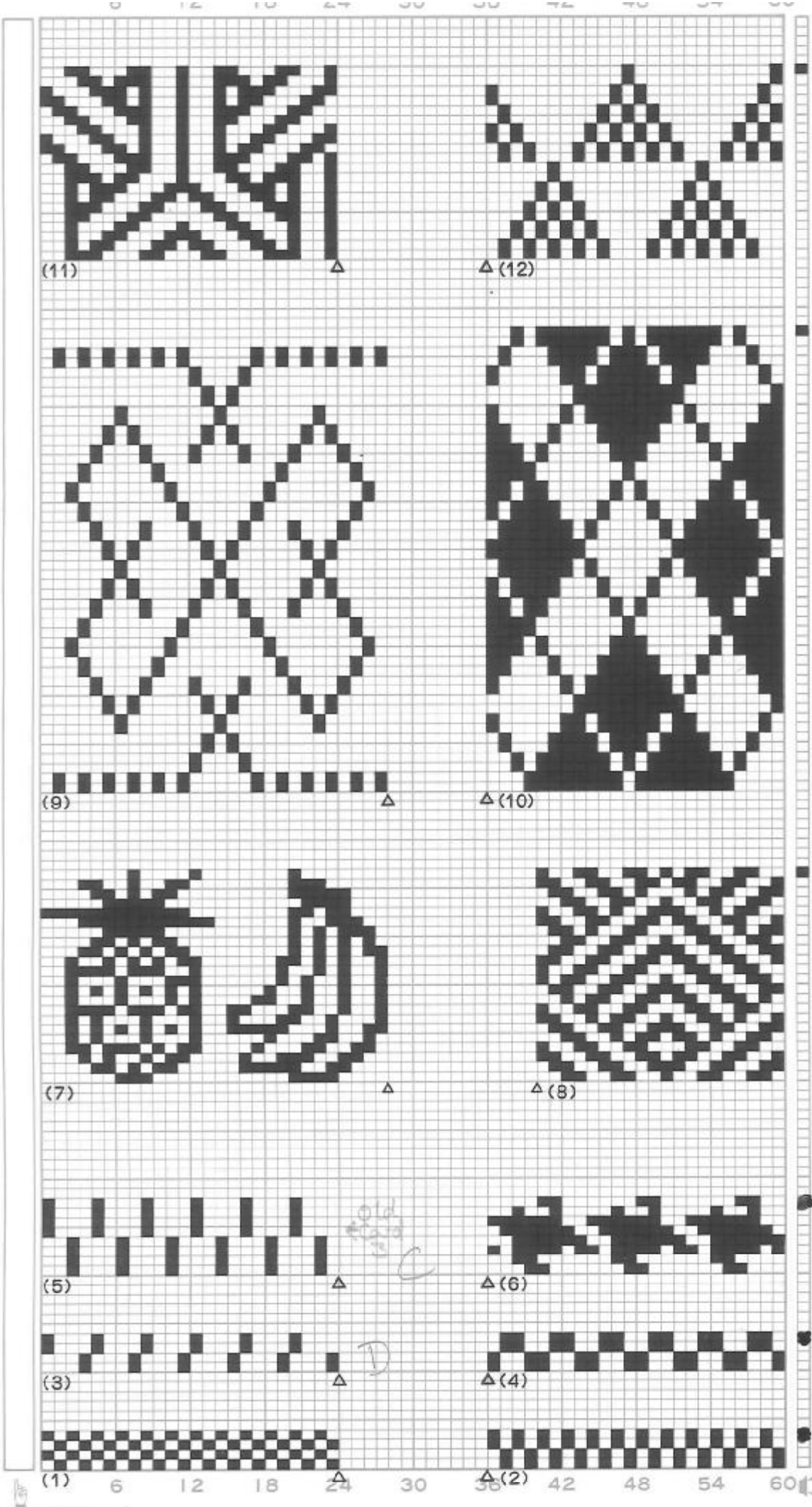
48S×26R

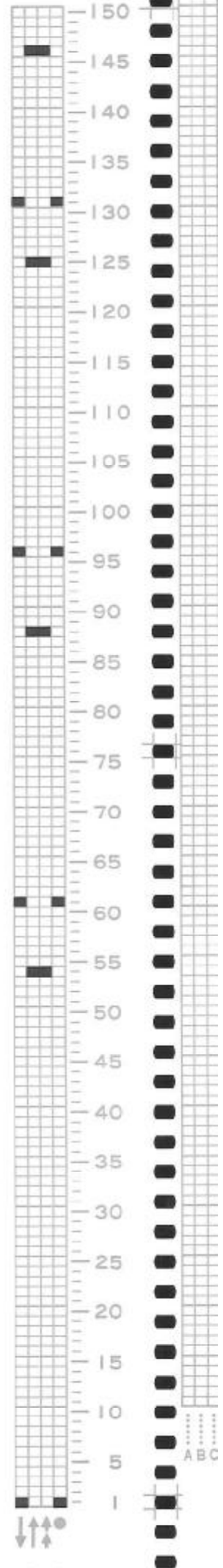
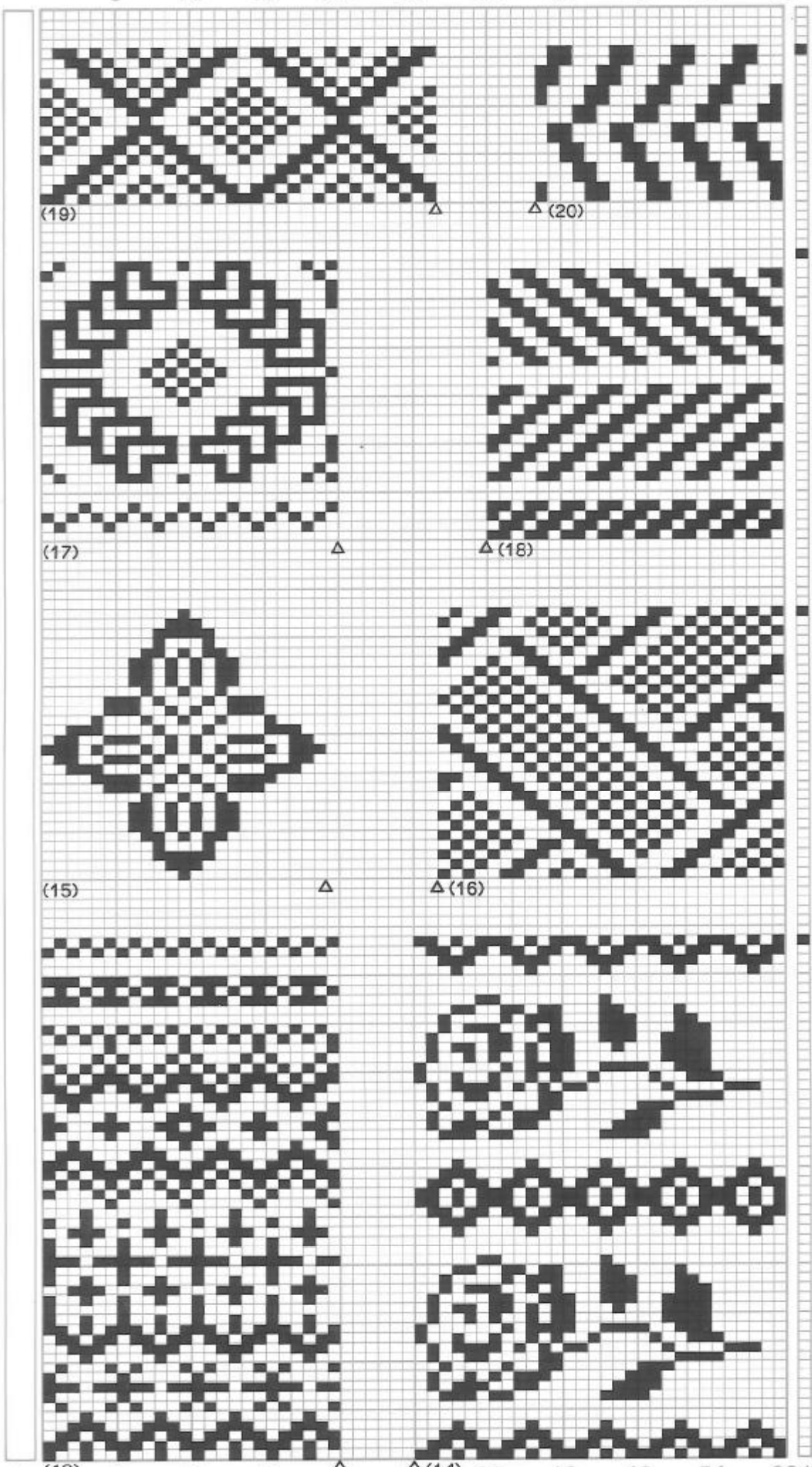


STITCH TYPE 編み方 PATTERN NO. カードNO.	FAIR ISLE (KNIT-IN) 編込み	TUCK STITCH 引き上げ編	SLIP STITCH すべり目編	SINGLE MOTIF マジック ポイント編	WEAVING スレッド編	PUNCH LACE パンチ レース編	PLATING 添え糸編
1-(1)	○	○		○	○	○	○
(2)	○	○		○		○	○
(3)	○	○		○	○	○	○
(4)	○		○	○		○	
(5)	○	○	○	○	○	○	
(6)	○						
(7)	○			○			
(8)	○		○		○	○	
(9)	○	○	○			○	○
(10)	○						
(11)	○				○	○	
(12)	○	○	○			○	○
2-(13)	○						
(14)	○						
(15)	○			○			
(16)	○		○		○	○	
(17)	○						
(18)	○		○		○		
(19)	○		○		○	○	
(20)	○		○				
3-(21)	○					○	
(22)	○						
(23)	○						
(24)	○						
(25)	○						
(26)	○						
4-(27)	○					○	
(28)	○						
(29)	○	○				○	○
(30)	○			○			
(31)	○		○				
5-(32)	○	○				○	○
(33)	○					○	
(34)	○	○				○	○
(35)	○						
(36)	○	○				○	○
(37)	○						
6-(38)	○					○	
(39)	○	○	○			○	○
(40)	○			○			
7-(41)	○	(○)				(○)	(○)
(42)	○					○	
(43)	○		○	○			
8-(44)	○						
(45)	○		○			○	
(46)	○				○		
9-(47)				○			
(48)	○			○			
10-(49)				○			
(50)	○				○		

※ Set Pattern Width at 6 for the patterns marked With(O).

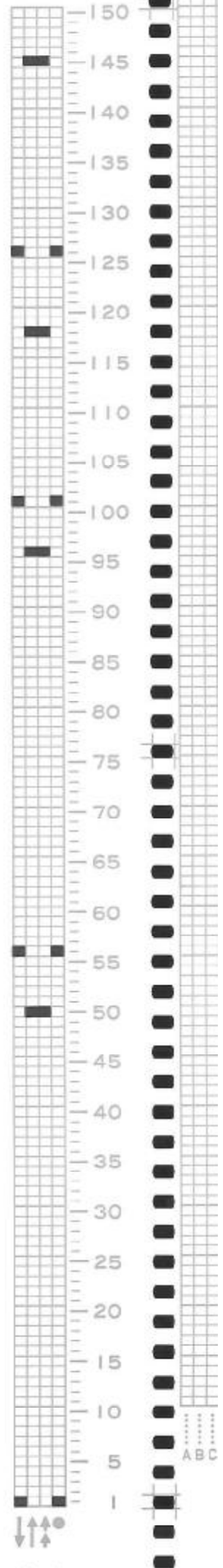
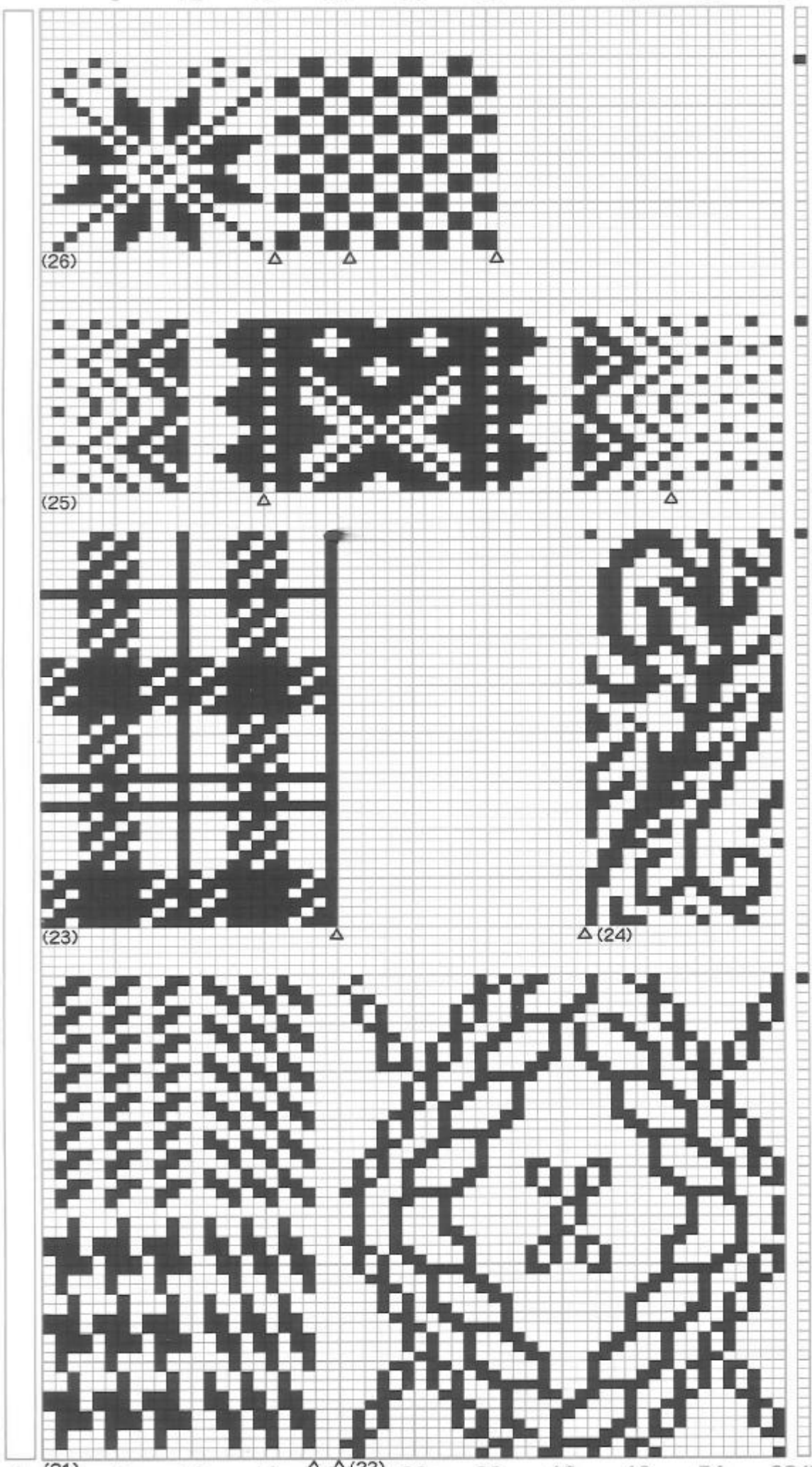
※ (○)は、模様幅目盛を6に合わせて編みます。



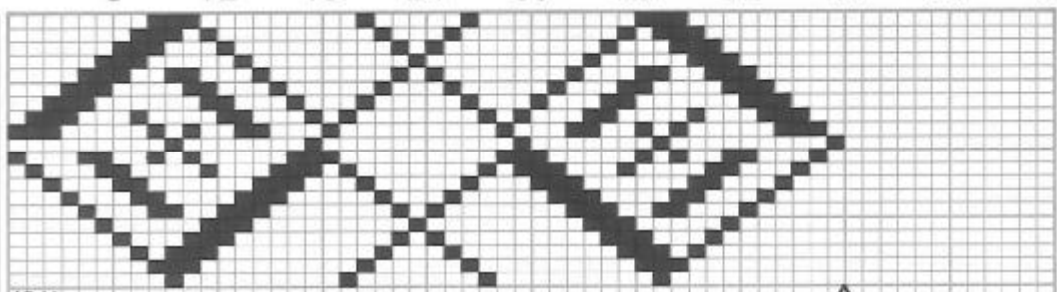


(13) 6 12 18 24 30 (14) 36 42 48 54 60

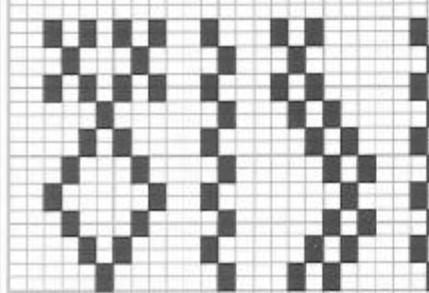




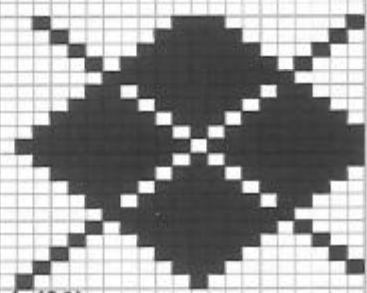
0 12 18 24 30 36 42 48 54 60



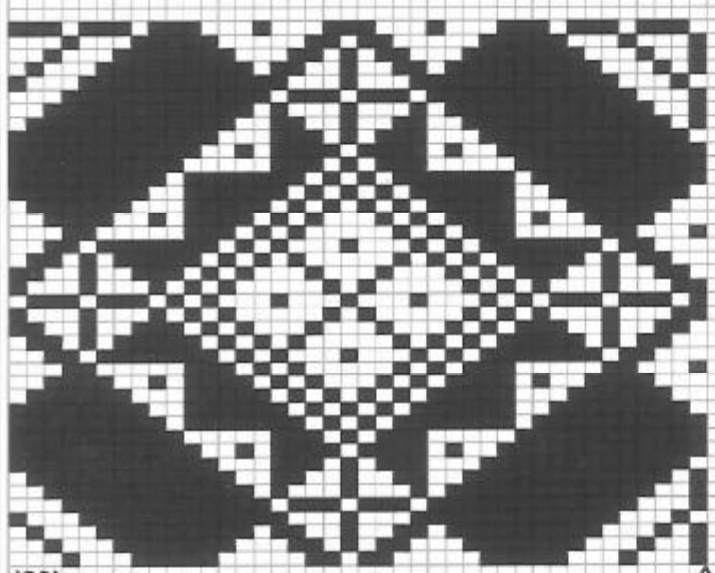
(31)



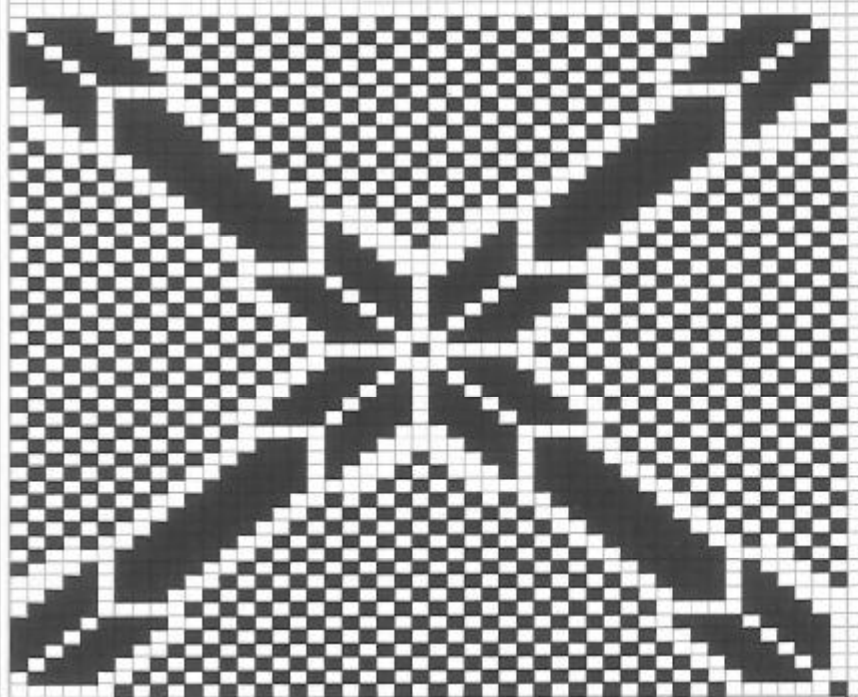
(29)



△ (30)



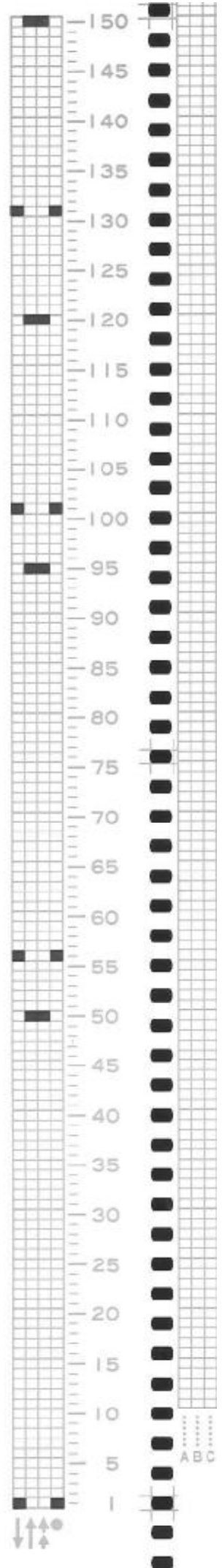
(28)

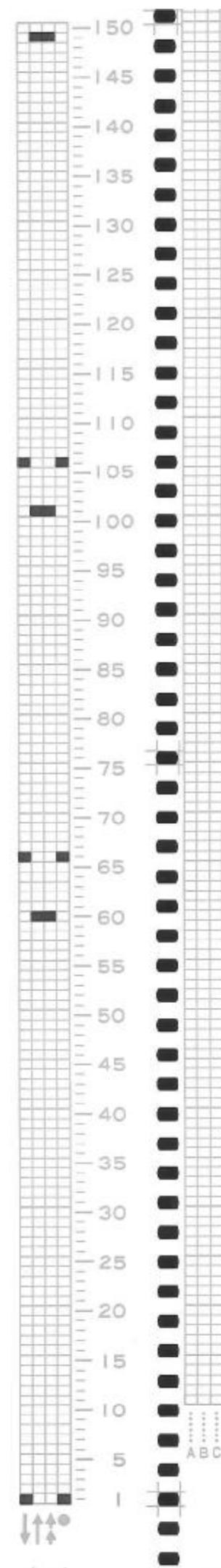
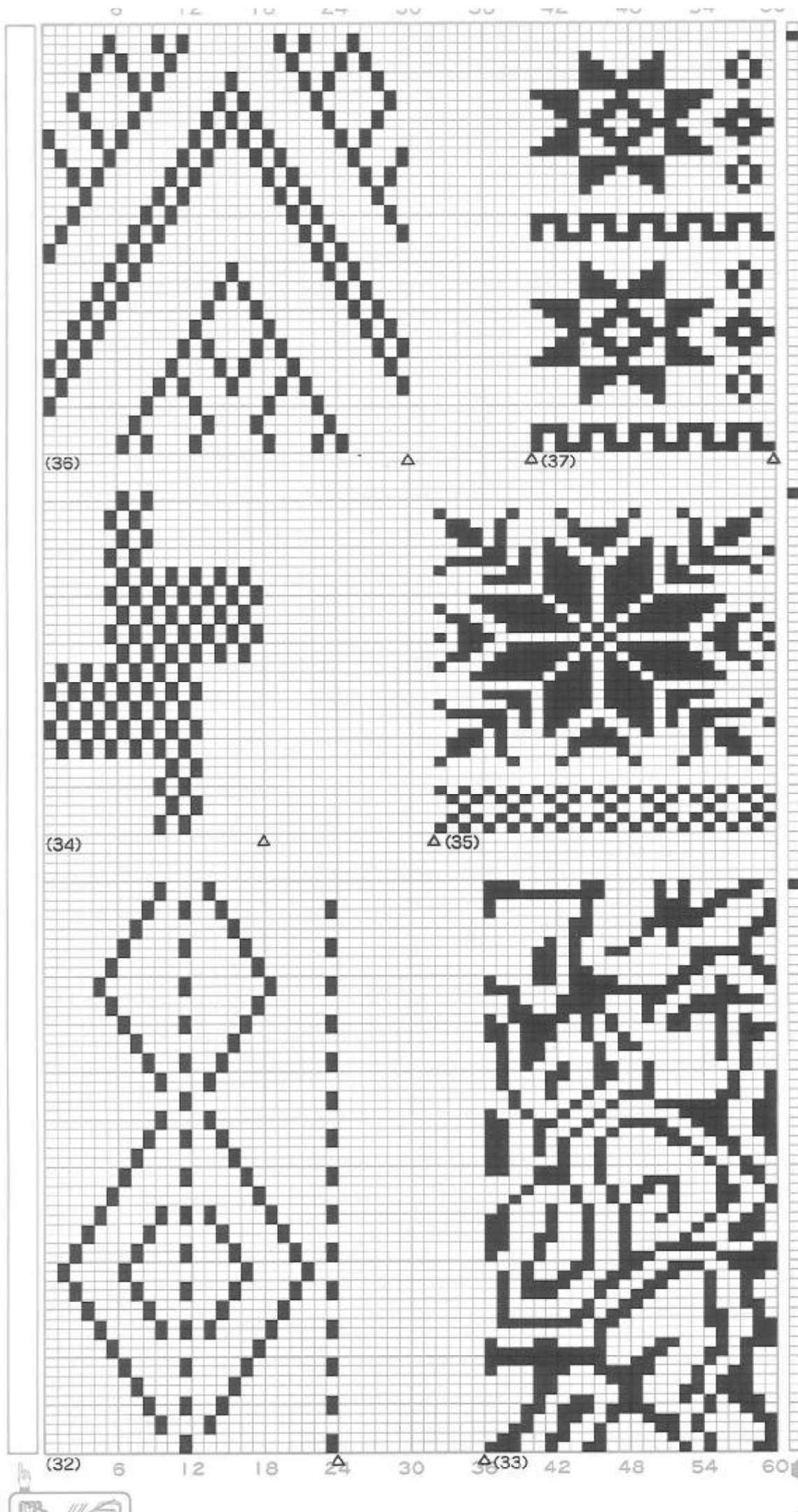


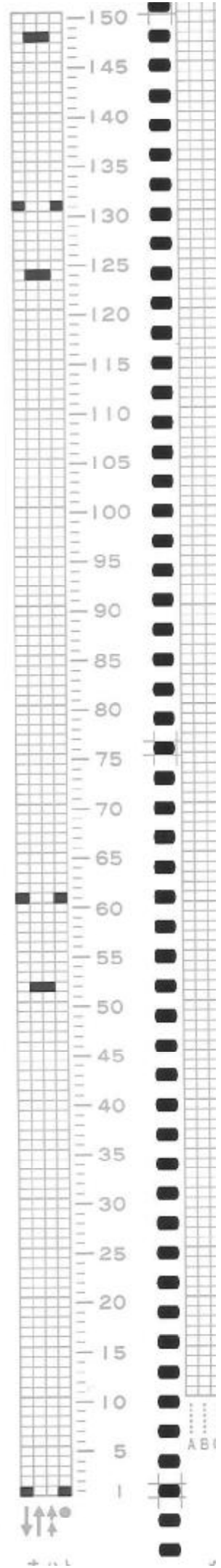
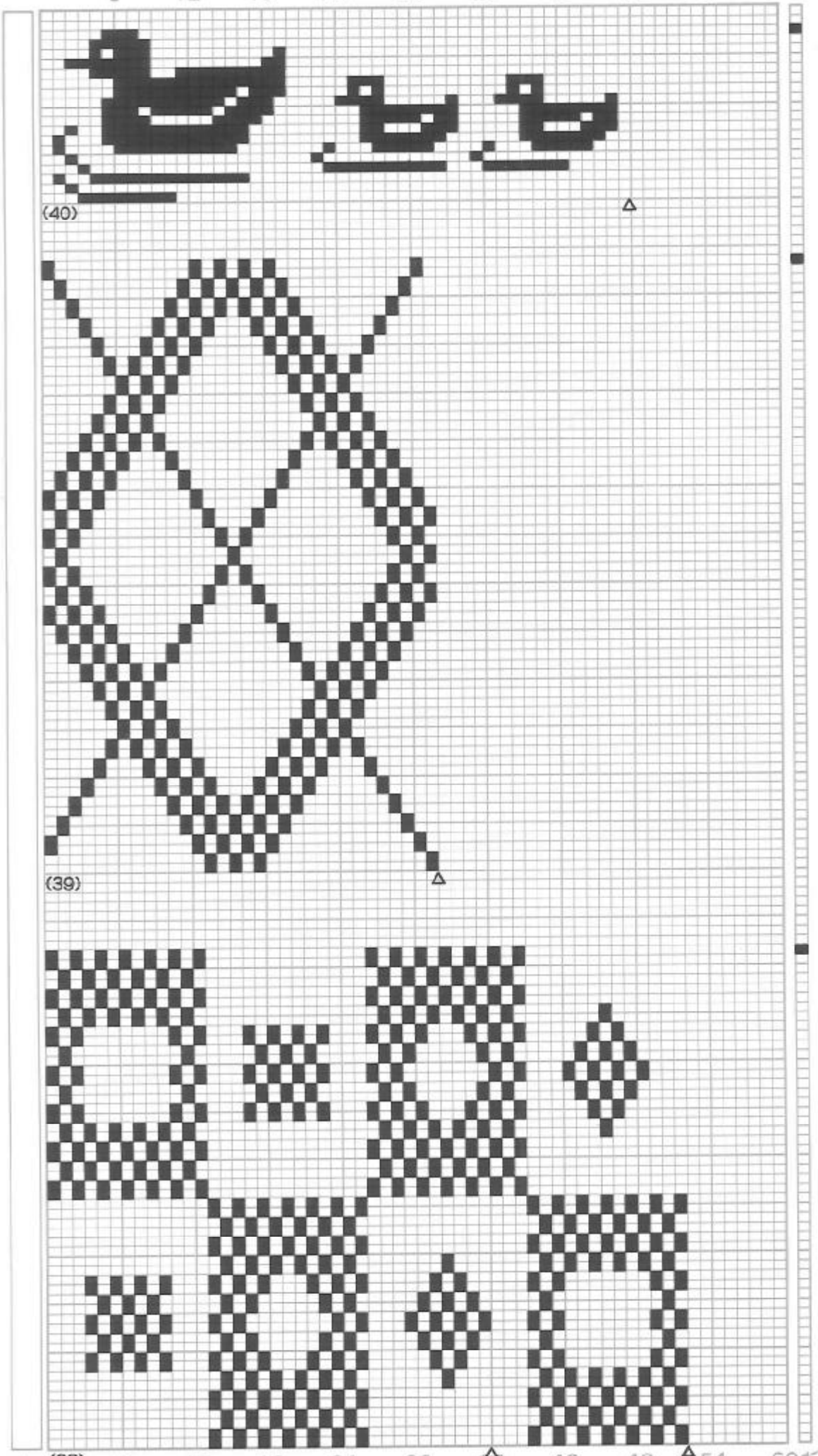
(27)

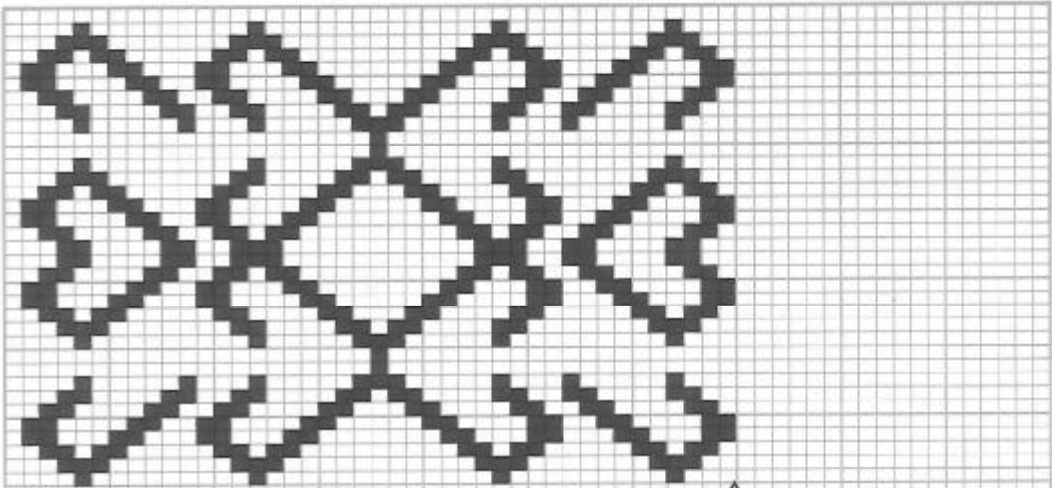


6 12 18 24 30 36 42 48 54 60

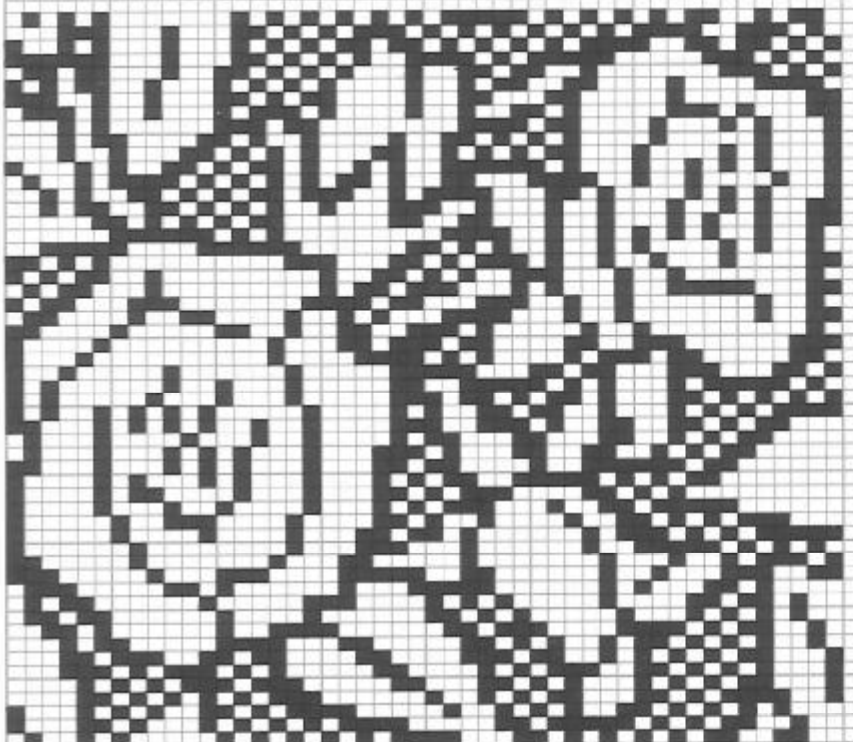




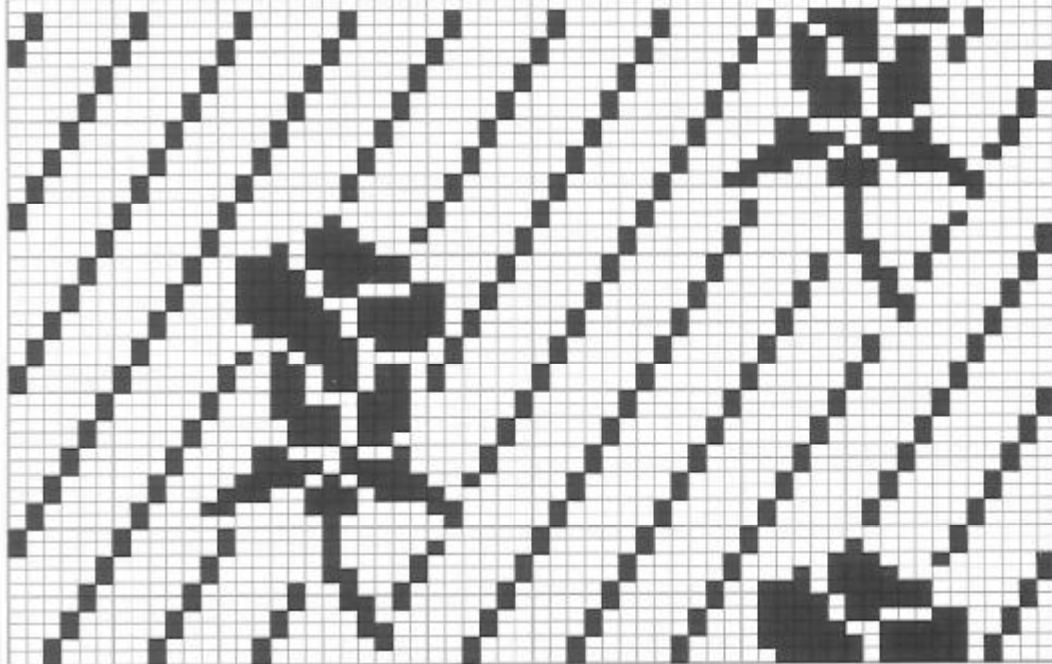




(43)



(42)



(41)

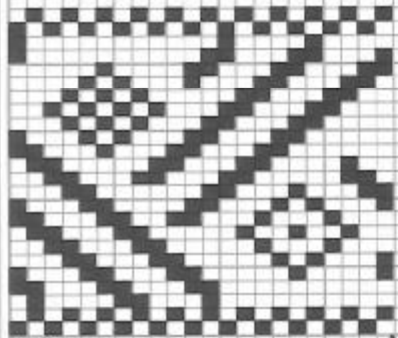
150
145
140
135
130
125
120
115
110
105
100
95
90
85
80
75
70
65
60
55
50
45
40
35
30
25
20
15
10
5
1

ABC

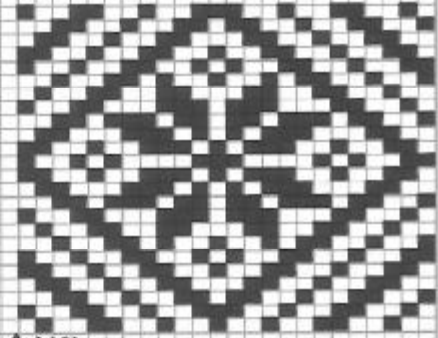
↑ ↓ ↻



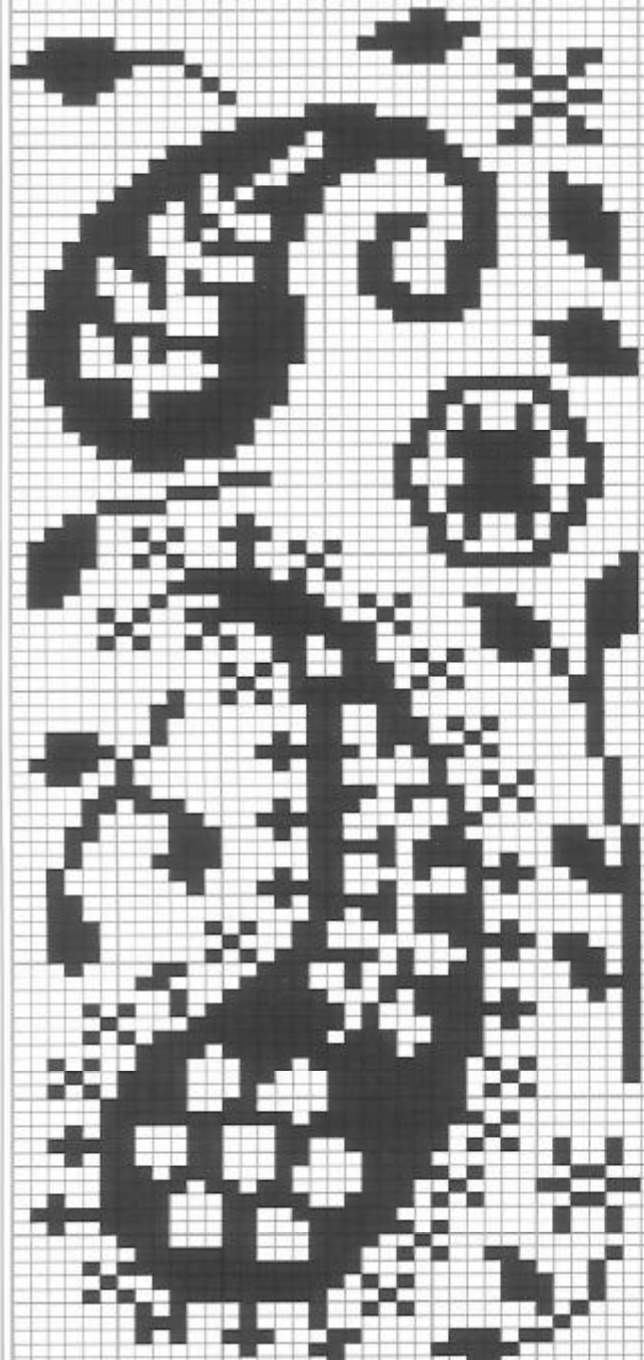
0 12 18 24 30 36 42 48 54 60



(45)



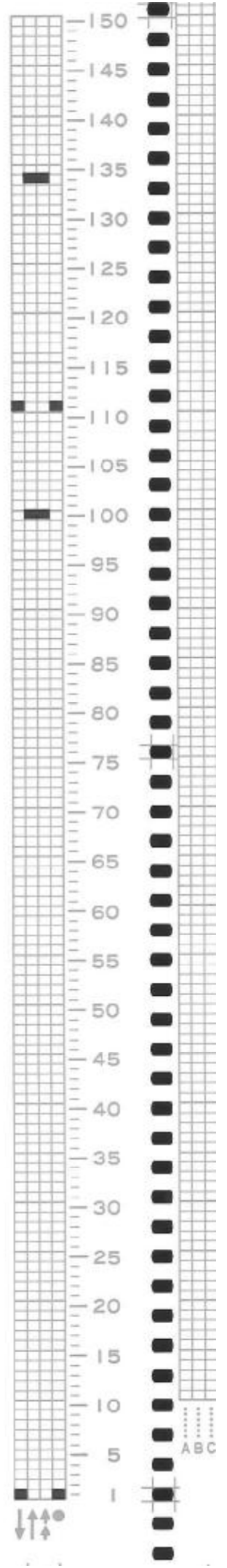
△(46)



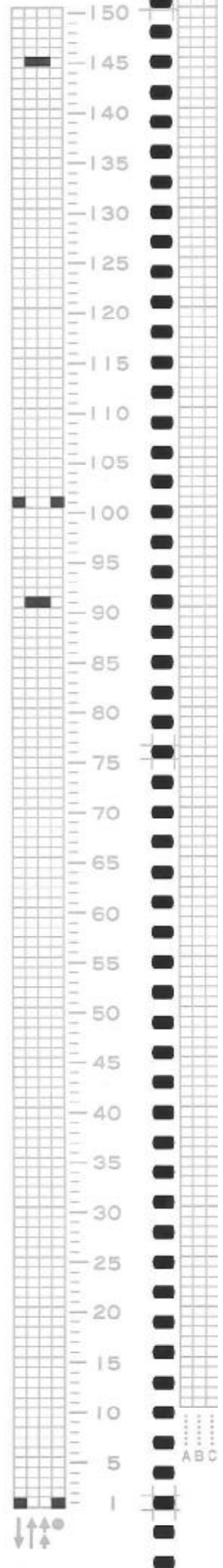
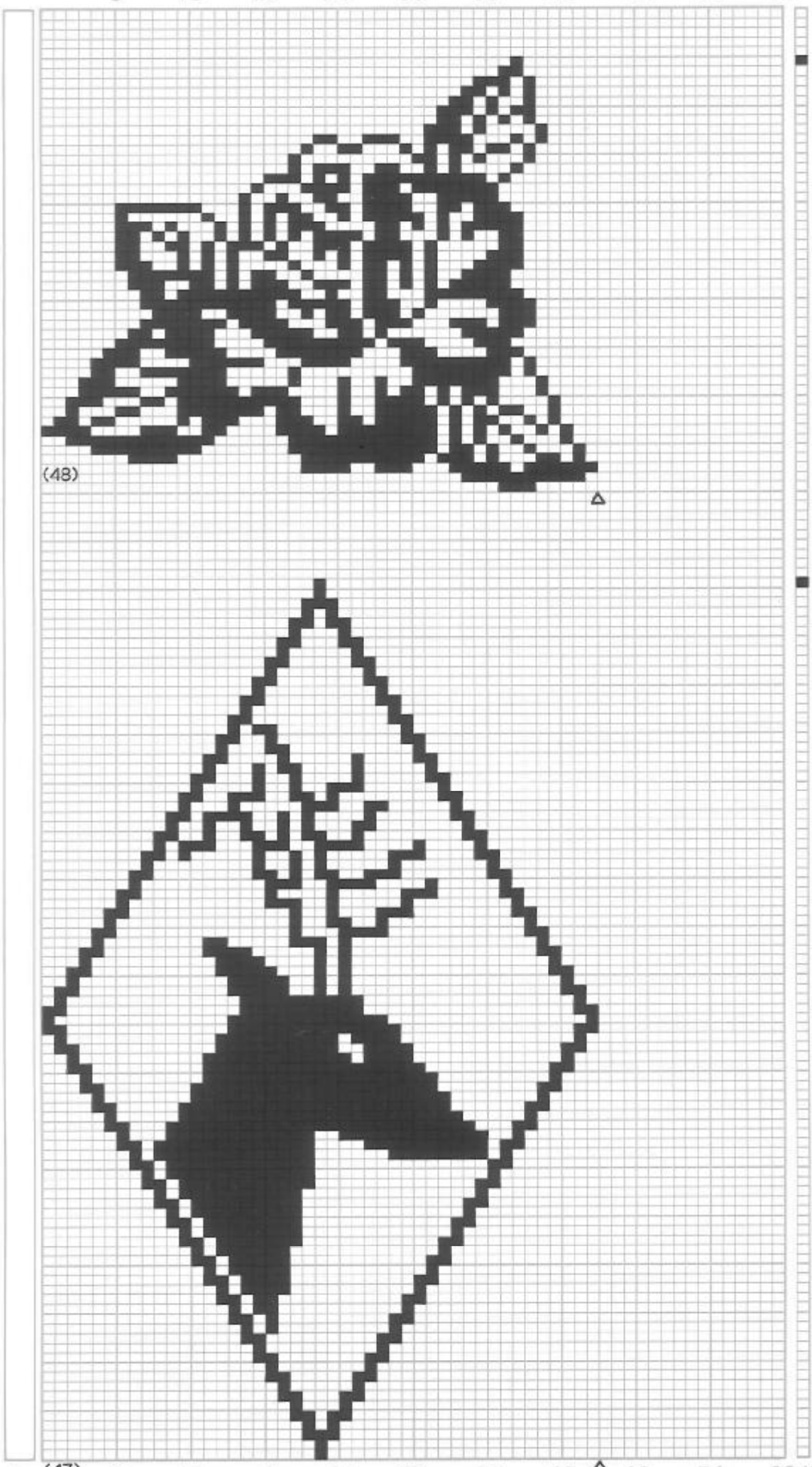
(44)

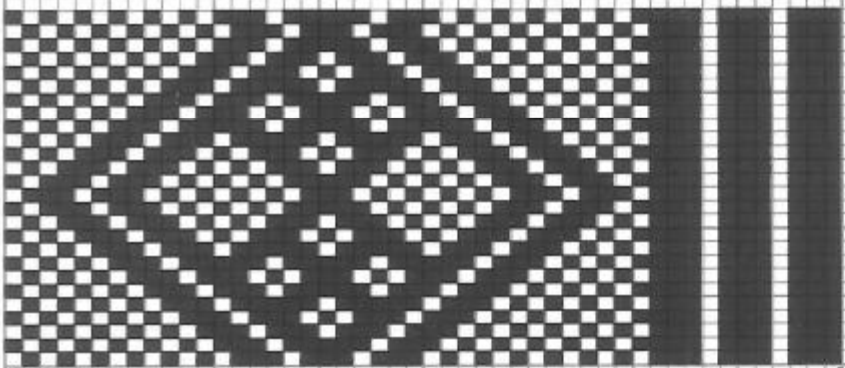


6 12 18 24 30 36 42 48 54 60



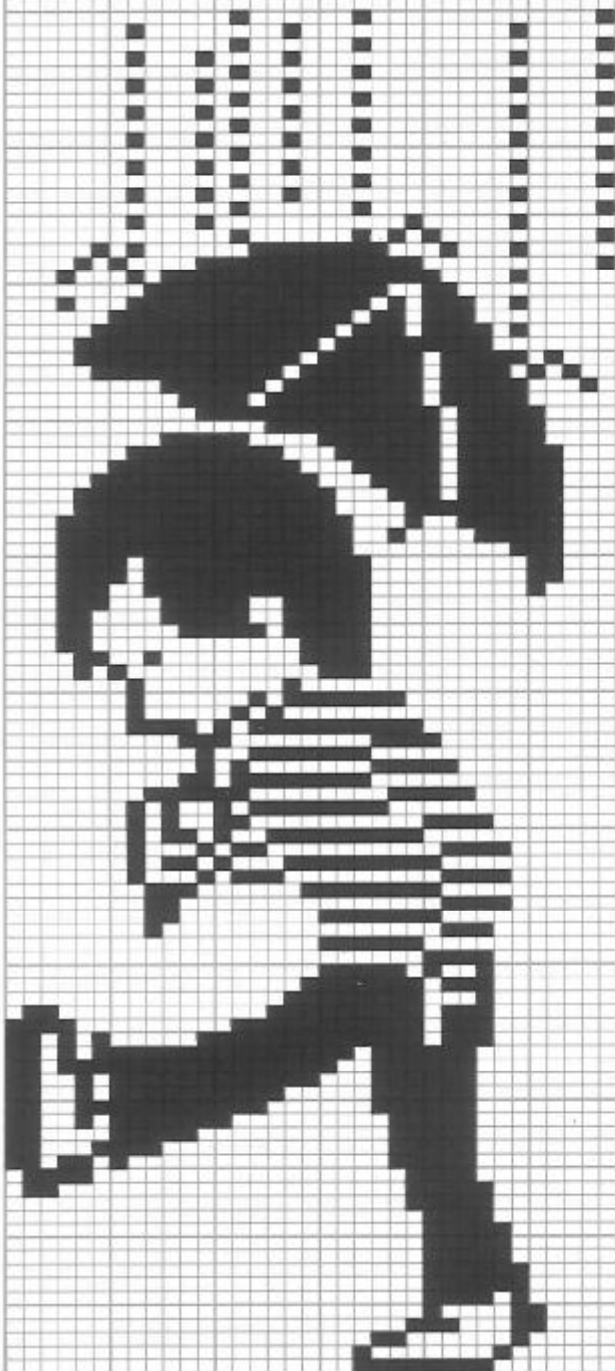
ABC



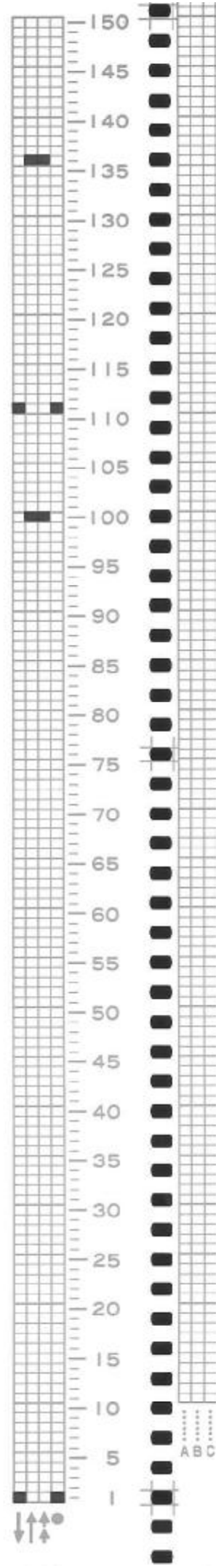


(50)

△



(49)



ABC

